

**ARKANSAS STATE HIGHWAY AND TRANSPORTATION DEPARTMENT
EQUIPMENT AND PROCUREMENT DIVISION
BID INVITATION**

Bid Number: M-17-004P

BID OPENING LOCATION:
AHTD Equipment and
Procurement Division
11302 W. Baseline Road
Little Rock, AR 72209

MAIL TO:
AHTD Equipment and
Procurement Division
P.O. Box 2261
Little Rock, AR 72203

DELIVER TO:
AHTD Equipment and
Procurement Division
11302 W. Baseline Road
Little Rock, AR 72209

Bid Opening Date: July 19, 2016 Time: 11:00 a.m.

Sealed bids for furnishing the commodities and/or services described below, subject to the Conditions on Page 2 of this Bid Invitation will be received at the above-noted mail and delivery locations until the above-noted bid opening date and time, and then publicly opened at the above-noted bid opening location. **Bids must be submitted on this form, with attachments when appropriate, or bids will be rejected. Late bids and unsigned bids will not be considered.**

In compliance with this Bid Invitation and subject to all the Conditions thereof, the undersigned offers and agrees to furnish any and all items upon which prices are quoted, at the price set opposite each item.

Company Name: _____

Name (Type or Print): _____

Address: _____

Title: _____

Phone: _____ Fax: _____

City: _____ State: _____ Zip: _____

E-mail Address: _____

Federal Tax ID or Social Security No.: _____

Signature: _____

Signature must be legible, original (not photocopied) and in ink.
Unsigned bids will be rejected.

Item No.	Description	Quantity	Unit	Unit Price	Amount
----------	-------------	----------	------	------------	--------

1. Equipment Storage Building (Design & Build) located at the Arkansas State Highway and Transportation Department, District 3 Headquarters, 2911 Hwy. 29 North, Hope, AR 71802 (Job #3-40)

LUMP SUM _____

To meet the requirements of Arkansas State Highway and Transportation Department Specifications and Drawings attached to and made a part of this bid.

CONTACT PERSON: Kenny Bennett (870-777-3457)

Bid price shall include all labor, materials, and equipment necessary to perform the work as specified, and shall further include all licenses, fees, permits, royalties, and all taxes. Bid price shall represent full compensation for completion of the work. This provision supersedes Condition 4 on page 2 of Bid Invitation. Payment will be made in accordance with Arkansas Highway & Transportation Department Standard Specifications and Applicable Special Provisions.

Subsection 105.04, 108.07, 109.01 and 109.02 of the Arkansas State Highway and Transportation Department Standard Specifications for Highway Construction, Edition of 2014, will be in effect. (Specifications are accessible on our web site at www.arkansashighways.com.)

Bid Bond in the amount of 5% of total bid price required of all bidders at time of bid opening or bid will be rejected. Personal and company checks are not acceptable as Bid Bonds. See Condition 3 on page 2 of Bid Invitation.

Performance Bond only (no checks of any kind allowed) in the amount of 100% of total bid price will be required of successful bidder prior to providing goods/services. See Condition 3 on page 2 of Bid Invitation.

The successful bidder will be required to begin within 15 days after notice to begin and complete within 60 working days after notice to begin.

Arkansas Contractor's License No. _____.

Current Arkansas Contractor's License Number must be listed or bid will be rejected (A.C.A. ¶17-25-101 *et seq.*).

Bids and Specifications are available on-line by going to the AHTD Web Site – www.arkansashighways.com and clicking on "Commodities and Services Bids/Contracts Information". Tabulations will also be available at this site after award of bid/contract. If you have any questions, call this office at 501-569-2667.

STANDARD BID CONDITIONS

M-17-004P

1. **ACCEPTANCE AND REJECTION:** The Arkansas State Highway and Transportation Department (AHTD) reserves the right to reject any or all bids, to accept bids in whole or in part (unless otherwise indicated by bidder), to waive any informalities in bids received, to accept bids on materials or equipment with variations from specifications where efficiency of operation will not be impaired, and to award bids to best serve the interest of the State.
2. **PRICES:** Unless otherwise stated in the Bid Invitation, the following will apply: (1) unit prices shall be bid, (2) prices should be stated in units of quantity specified (feet, each, lbs., etc.), (3) prices must be F.O.B. destination specified in bid, (4) prices must be firm and not subject to escalation, (5) bid must be firm for acceptance for 30 days from bid opening date. In case of errors in extension, unit prices shall govern. Discounts from bid price will not be considered in making awards.
3. **BID BONDS AND PERFORMANCE BONDS:** If required, a **Bid Bond** in the form of a cashier's check, certified check, or surety bond issued by a surety company, in an amount stated in the Bid Invitation, must accompany bid. Personal and company checks are not acceptable as Bid Bonds. Failure to submit a Bid Bond as required will cause a bid to be rejected. The Bid Bond will be forfeited as liquidated damages if the successful bidder fails to provide a required Performance Bond within the period stipulated by AHTD or fails to honor their bid. When a bidder claims and can show clear and convincing evidence that a material mistake was made in the bid and was not the bid intended, the bidder may be permitted to withdraw their bid prior to award without forfeiture of bid bond. Cashier's checks and certified checks submitted as Bid Bonds will be returned to unsuccessful bidders; surety bonds will be retained. The successful bidder will be required to furnish a **Performance Bond** in an amount stated in the Bid Invitation and in the form of a cashier's check, certified check, or surety bond issued by a surety company, unless otherwise stated in the Bid Invitation, as a guarantee of delivery of goods/services in accordance with the specifications and within the time established in the bid. Personal and company checks are not acceptable as Performance Bonds. In some cases, a cashier's check or certified check submitted as a Bid Bond will be held as the Performance Bond of the successful bidder. Cashier's checks or certified checks submitted as Performance Bonds will be refunded shortly after payment has been made to the successful bidder for completion of all terms of the bid; surety bonds will be retained. Surety bonds must be issued by a surety company authorized to do business in Arkansas, and must be signed by a Resident Local Agent licensed by the Arkansas State Insurance Commissioner to represent that surety company. Resident Agent's Power-of-Attorney must accompany the surety bond. Certain bids involving labor will require Performance Bonds in the form of surety bonds only (no checks of any kind allowed). These bonds shall not only serve to guarantee the completion of the work, but also to guarantee the excellence of both workmanship and material until the work is finally accepted and the provisions of the Plans, Specifications, and Special Provisions fulfilled. In such cases, the company issuing the surety bond must comply with all stipulations herein and must be named in the U. S. Treasury listing of companies holding Certificates of Authority as acceptable sureties on Federal Bonds and as acceptable reinsuring companies. Any excess between the face amount of the bond and the underwriting limitation of the bonding company shall be protected by reinsurance provided by an acceptable reinsuring company. Annual Bid and Performance Bonds on file with E & P Division must have sufficient unencumbered funds to meet current bonding requirements, or the bid will be rejected, unless the balance is submitted as set forth above, prior to bid opening.
4. **TAXES:** The AHTD is not exempt from Arkansas State Sales and Use Taxes, or local option city/county sales taxes, when applicable, and bidders are responsible to the State Revenue Department for such taxes. These taxes should not be included in bid prices, but where required by law, will be paid by the AHTD as an addition thereto, and should be added to the billing to the AHTD. The AHTD is exempt from Federal Excise Taxes on all commodities except motor fuels; and excise taxes should not be included in bid prices except for motor fuels. Where applicable, tax exemption certificates will be furnished by the AHTD.
5. **"ALL OR NONE" BIDS:** Bidders who wish to bid "All or None" on two or more items shall so stipulate on the face of bid sheet; otherwise, bid may be awarded on an individual item basis.
6. **SPECIFICATIONS:** Complete specifications should be attached for any substitution or alternate offered, or where amplification is necessary. Bidder's name must be placed on all attachments to the bid.
7. **EXCEPTIONS TO SPECIFICATIONS:** Any exceptions to the bid specifications must be stated in the bid. Any exceptions to manufacturer's published literature must be stated in the bid, or it will be assumed that bidder is bidding exactly as stated in the literature.
8. **BRAND NAME REFERENCES:** All brand name references in bid specifications refer to that commodity or its equivalent, unless otherwise stated in Bid Invitation. Bidder should state brand or trade name of item being bid, if such name exists.
9. **FREIGHT:** All freight charges should be included in bid price. Any change in common carrier rates authorized by the Interstate Commerce Commission will be adjusted if such change occurs after the bid opening date. Receipted common carrier bills that reflect ICC authorized rate changes must be furnished.
10. **SAMPLES, LITERATURE, DEMONSTRATIONS:** Samples and technical literature must be provided free of any charge within 14 days of AHTD request, and free demonstrations within 30 days, unless AHTD extends time. Failure to provide as requested within this period may cause bid to be rejected. Samples, literature and demonstrations must be substantially the same as the item(s) being bid, unless otherwise agreed to by AHTD. Samples that are not destroyed will be returned upon request at bidders expense. Samples from successful bidders may be retained for comparison with items actually furnished.
11. **GUARANTY:** Unless otherwise indicated in Bid Invitation, it is understood and agreed that any item offered or shipped on this bid shall be newly manufactured, latest model and design, and in first class condition; and that all containers shall be new, suitable for storage or shipment and in compliance with all applicable laws relating to construction, packaging, labeling and registration.
12. **BACKORDERS OR DELAY IN DELIVERY:** Backorders or failure to deliver within the time required may constitute default. Vendor must give written notice to the AHTD, as soon as possible, of the reason for any delay and the expected delivery date. The AHTD has the right to extend delivery if reasons appear valid. If reason or delivery date is not acceptable, vendor is in default.
13. **DEFAULT:** All commodities furnished will be subject to inspection and acceptance by AHTD after delivery. Default in promised delivery or failure to meet specifications authorizes the AHTD to cancel award or any portion of same, to reasonably purchase commodities or services elsewhere and to charge full increase, if any, in cost and handling to defaulting vendor. Applicable bonds may be forfeited.
14. **ETHICS:** *"It shall be a breach of ethical standards for a person to be retained, or to retain a person, to solicit or secure a State contract upon an agreement of understanding for a commission, percentage, brokerage, or contingent fee, except for retention of bona fide employees or bona fide established commercial selling agencies maintained by the contractor for the purpose of securing business."* (Arkansas Code, Annotated, Section 19-11-708).

ARKANSAS STATE HIGHWAY AND TRANSPORTATION DEPARTMENT NOTICE OF NONDISCRIMINATION

The Arkansas State Highway and Transportation Department (Department) complies with all civil rights provisions of federal statutes and related authorities that prohibit discrimination in programs and activities receiving federal financial assistance. Therefore, the Department does not discriminate on the basis of race, sex, color, age, national origin, religion (not applicable as a protected group under the Federal Motor Carrier Safety Administration Title VI Program), disability, Limited English Proficiency (LEP), or low-income status in the admission, access to and treatment in the Department's programs and activities, as well as the Department's hiring or employment practices. Complaints of alleged discrimination and inquiries regarding the Department's nondiscrimination policies may be directed to Joanna P. McFadden Section Head – EEO/DBE (ADA/504/Title VI Coordinator), P. O. Box 2261, Little Rock, AR 72203, (501)569-2298, (Voice/TTY 711), or the following email address: **joanna.mcfadden@ahtd.ar.gov**

Free language assistance for Limited English Proficient individuals is available upon request.

This notice is available from the ADA/504/Title VI Coordinator in large print, on audiotape and in Braille.

ARKANSAS STATE HIGHWAY AND TRANSPORTATION DEPARTMENT

SPECIAL PROVISION

LIQUIDATED DAMAGES

As specified in the Contract, liquidated damages for this project will be as shown in the following table:

WORKING DAY PROJECTS

ORIGINAL CONTRACT AMOUNT		RATE
FROM MORE THAN	TO AND INCLUDING	-----
\$ 0	\$ 50,000	\$ 400
50,000	100,000	700
100,000	500,000	800
500,000	1,000,000	1,100
1,000,000	2,000,000	1,300
2,000,000	5,000,000	1,500
5,000,000	10,000,000	1,900
10,000,000	15,000,000	2,000
15,000,000	20,000,000	2,100
20,000,000	-----	2,500

FIXED DATE PROJECTS

ORIGINAL CONTRACT AMOUNT		RATE
FROM MORE THAN	TO AND INCLUDING	-----
\$ 0	\$ 50,000	\$ 90
50,000	100,000	100
100,000	500,000	200
500,000	1,000,000	250
1,000,000	2,000,000	320
2,000,000	5,000,000	400
5,000,000	10,000,000	600
10,000,000	-----	750

**DISTRICT 3 HEADQUARTERS
EQUIPMENT STORAGE BUILDING
HOPE, ARKANSAS
HEMPSTEAD COUNTY**

SECTION 13 34 19 - METAL BUILDING SYSTEMS

PART 1 - GENERAL

1.1 SECTION REQUIREMENTS

- A. Submittals: Product Data, Samples, Shop Drawings and structural analysis data signed and sealed by a qualified professional engineer registered in the state where Project is located.
 - 1. Submit letter of design certification, signed and sealed by a qualified professional engineer. Indicate name and location of Project, name of manufacturer, order number, name of contractor, governing building code and standards including year of edition, design loads and load combinations, building use category, and load importance factors.
- B. Comply with AISC 360, "Specification for Structural Steel Buildings," and with AISI's "North American Specification for the Design of Cold-Formed Steel Structural Members" for design requirements and allowable stresses.

PART 2 - PRODUCTS

2.1 METAL BUILDINGS

- A. Metal Building System Description: Rigid clear span with nonexpandable endwalls, primary frame and endwall columns.
 - 1. Eave Height: As indicated on Drawings.
 - 2. Dimensions and Bay Spacings: As indicated on Drawings.
 - 3. Roof Slope: 1 inch per 12 inches.
- B. Design Criteria:
 - 1. Applicable Building Code: IBC 12
 - 2. Roof Live Load (psf): 20
 - 3. Roof Dead Load (psf): 2.200
 - 4. Roof Snow Load: 7
 - 5. Ground Snow Load: 10
 - 6. Snow Importance: 1.00

**DISTRICT 3 HEADQUARTERS
EQUIPMENT STORAGE BUILDING
HOPE, ARKANSAS
HEMPSTEAD COUNTY**

7. Reduction Allowed: Yes
 8. Roof Collateral Load (psf): 4
 9. Wind Speed (mph): 115
 10. Wind Importance: 1.00
 11. Building Exposure: B
 12. Surface Roughness: B
 13. Seismic Zone: C
 14. Seismic Importance: 1.00
 15. Seismic Coeff.: $S_s=0.17$ $S_1=0.09$
- C. Deflection Criteria:
1. Wall Girt Max.: $L/90$
 2. Roof Pulin L.L.: $L/180$
 3. Rigid Frame Horizontal: $H/60$
 4. Rigid Frame Vertical: $L/180$
- D. Wind Framing:
1. Roof: Diagonal Bracing
 2. Endwalls: Rigid Frames
 3. Sidewalls: Wind Bents
- E. Structural-Framing Materials:
1. W-Shapes: ASTM A 992/A 992M; ASTM A 572/A 572M, Grade 50 or 55; or ASTM A 529/A 529M, Grade 50 or 55.
 2. Channels, Angles, M-Shapes, and S-Shapes: ASTM A 36/A 36M; ASTM A 572/A 572M, Grade 50 or 55; or ASTM A 529/A 529M, Grade 50 or 55.
 3. Plate and Bar: ASTM A 36/A 36M; ASTM A 572/A 572M, Grade 50 or 55; or ASTM A 529/A 529M, Grade 50 or 55.
 4. Steel Pipe: ASTM A 53/A 53M, Type E or S, Grade B.
 5. Cold-Formed Hollow Structural Sections: ASTM A 500, Grade B or C, structural tubing.
 6. Structural-Steel Sheet: Hot-rolled, ASTM A 1011/A 1011M, Structural Steel (SS), Grades 30 through 55, or High-Strength Low-Alloy Steel (HSLAS), Grades 45 through 70; or cold-rolled, ASTM A 1008/A 1008M, Structural Steel (SS), Grades 25 through 80, or High-Strength Low-Alloy Steel (HSLAS), Grades 45 through 70.
 7. Metallic-Coated Steel Sheet: ASTM A 653/A 653M, Structural Steel (SS), Grades 33 through 80, or High-Strength Low-Alloy Steel (HSLAS), Grades 50 through 80; with G60 coating designation; mill phosphatized.

**DISTRICT 3 HEADQUARTERS
EQUIPMENT STORAGE BUILDING
HOPE, ARKANSAS
HEMPSTEAD COUNTY**

8. Steel Joists and Joist Girders: Comply with SJI's "Standard Specifications, Load Tables, and Weight Tables for Steel Joists and Joist Girders," with steel-angle top and bottom chord members.
- F. Roof and Wall Panels:
1. Metal Panels: Steel sheet, zinc coated by the hot-dip process, complying with ASTM A 653/A 653M, G90, Structural Steel (SS), and prepainted by the coil-coating process to comply with ASTM A 755/A 755M.
 2. Standing-Seam Roof Panels: Metal panels factory formed to provide 24-inch coverage; with 3-inch-high (including seam), raised trapezoidal major ribs at panel edges, and intermediate stiffening ribs symmetrically spaced between major ribs. Single-folded, mechanically seamed panels. Design panels for mechanical attachment to structure using concealed clips engaging panel edges.
 3. Roof Panel Metal Thickness: 26 Gauge
 4. Lap-Seam Wall Panels: Metal panels factory formed to provide 36-inch coverage, with raised trapezoidal major ribs at 12 inches o.c., and intermediate stiffening ribs symmetrically spaced between major ribs. Design panels for mechanical attachment to structure using exposed fasteners, lapping major ribs at panel edges.
 5. Wall Panel Metal Thickness: 26 Gauge
 6. Metal Panel Finish: Fluoropolymer two-coat system consisting of specially formulated inhibitive primer and fluoropolymer color topcoat containing not less than 70 percent PVDF resin by weight, with a total minimum dry film thickness of 1 mil.
 7. Panel Accessories: Provide clips, flashings, sealants, gaskets, and similar items.
- G. Flashing and Trim: Form from 0.022-inch nominal-thickness, zinc-coated (galvanized) steel sheet prepainted with coil coating. Provide flashing and trim as required to seal against weather and to provide finished appearance. Finish flashing and trim same as adjacent roof or wall panels.
- H. Miscellaneous Materials:
1. Grout: ASTM C 1107, factory-packaged, nonmetallic grout, noncorrosive, and nonstaining.

**DISTRICT 3 HEADQUARTERS
EQUIPMENT STORAGE BUILDING
HOPE, ARKANSAS
HEMPSTEAD COUNTY**

PART 3 - EXECUTION

3.1 ERECTION

- A. Setting Base and Bearing Plates: Clean concrete and masonry of bond-reducing materials and roughen surfaces before setting plates. Clean bottom surface of plates.
1. Set plates for structural members on wedges, shims, or setting nuts.
 2. Tighten anchor rods after supported members have been positioned and plumbed.
 3. Pack grout solidly between bearing surfaces and plates so no voids remain. Neatly finish exposed surfaces; protect grout and allow to cure.
- B. Erect framing true to line, level, plumb, rigid, and secure. Comply with AISC specifications referenced in this Section.
1. Make field connections for primary framing using high-strength bolts installed according to RCSC's "Specification for Structural Joints Using ASTM A 325 or A 490 Bolts," snug tightened or pretensioned.
 2. Fasten secondary framing to primary framing using clips and non-high-strength bolts. Hold rigidly to a straight line by sag rods.
 3. Install purlins, girts and accessories plumb, square, and true to line; securely fasten to supporting construction.
 4. Bracing: Install bracing in roof and sidewalls where indicated on erection drawings.
- C. Roof Panel Installation: Provide roof panels of full length from eave to ridge when possible.
1. Install screws with power tools having controlled torque to compress neoprene washer without damage to washer, screw threads, or panels. Install screws in predrilled holes.
 2. Use aluminum or stainless-steel fasteners for exterior and galvanized fasteners for interior.
 3. Locate panel splices over, but not attached to, structural supports; stagger panel splices.
 4. Standing-Seam Roof Panels: Fasten to purlins with concealed clips at each standing-seam joint. Install clips over top of insulation. Crimp standing seams with manufacturer-approved motorized seamer tool. Rigidly fasten eave end of metal roof panels and allow ridge end free movement due to thermal expansion and contraction.

**DISTRICT 3 HEADQUARTERS
EQUIPMENT STORAGE BUILDING
HOPE, ARKANSAS
HEMPSTEAD COUNTY**

- D. Wall Panel Installation: Provide panels full height of building unless otherwise indicated.
1. Arrange and nest side-lap joints so prevailing winds blow over, not into, lapped joints.
 2. When two rows of panels are required, lap panels 4 inches minimum. Locate panel splices over structural supports.
 3. Rigidly fasten base end of metal wall panels and allow eave end free movement due to thermal expansion and contraction. Predrill panels.
 4. Apply elastomeric sealant continuously between metal base channel (sill angle) and concrete, and elsewhere as necessary for waterproofing.
 5. Apply a continuous ribbon of sealant tape to weather-side surface of fastenings on lap seams.
 6. Install screws with power tools having controlled torque to compress neoprene washer without damage to washer, screw threads, or panels. Install screws in predrilled holes.
 7. Use aluminum or stainless-steel fasteners for exterior and galvanized fasteners for interior.

END OF SECTION 13 34 19



**DISTRICT 3 HEADQUARTERS
EQUIPMENT STORAGE BUILDING**
Hope, Arkansas
Hempstead County

DATE: JUNE 10, 2016
JOB NO. 3-40
DRAWN BY: KB
REVISIONS:

G1.1
1 OF 5

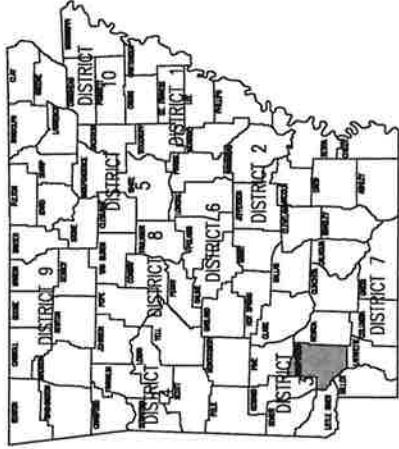
DATE REVISION	DATE REVISION	DATE REVISION	DATE REVISION	DATE REVISION	DATE REVISION	DATE REVISION	DATE REVISION

ARKANSAS STATE HIGHWAY AND TRANSPORTATION DEPARTMENT

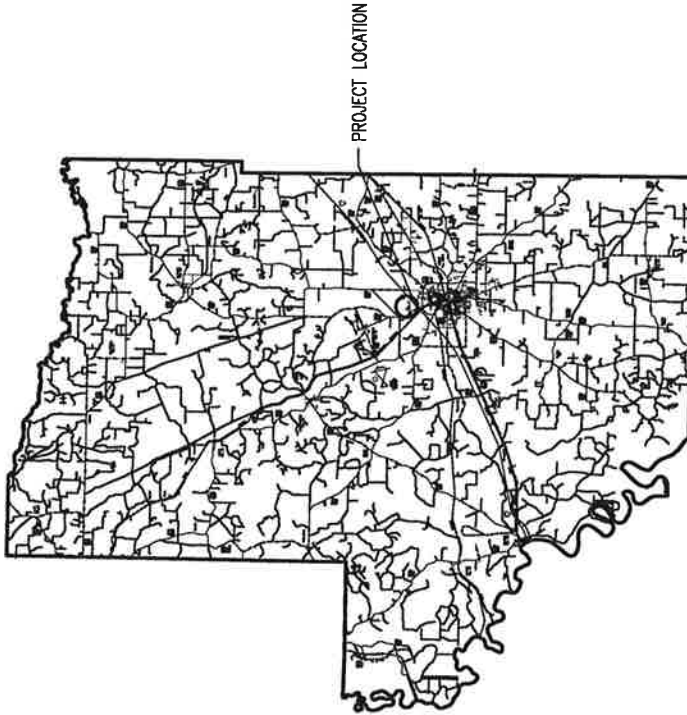
CONSTRUCTION PLANS FOR:

**DISTRICT 3 HEADQUARTERS
EQUIPMENT STORAGE BUILDING
HOPE, ARKANSAS
HEMPSTEAD COUNTY**

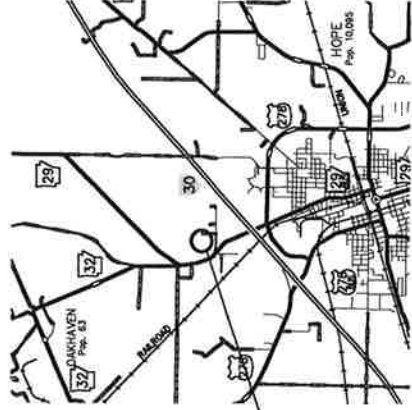
JOB 3-40



ARK. HWY. DIST. NO. 6



COUNTY MAP



VICINITY MAP

PROJECT LOCATION
911 ADDRESS:
2911 HIGHWAY 29 NORTH,
INTERSTATE 30 EXIT #31
HOPE, AR 71802

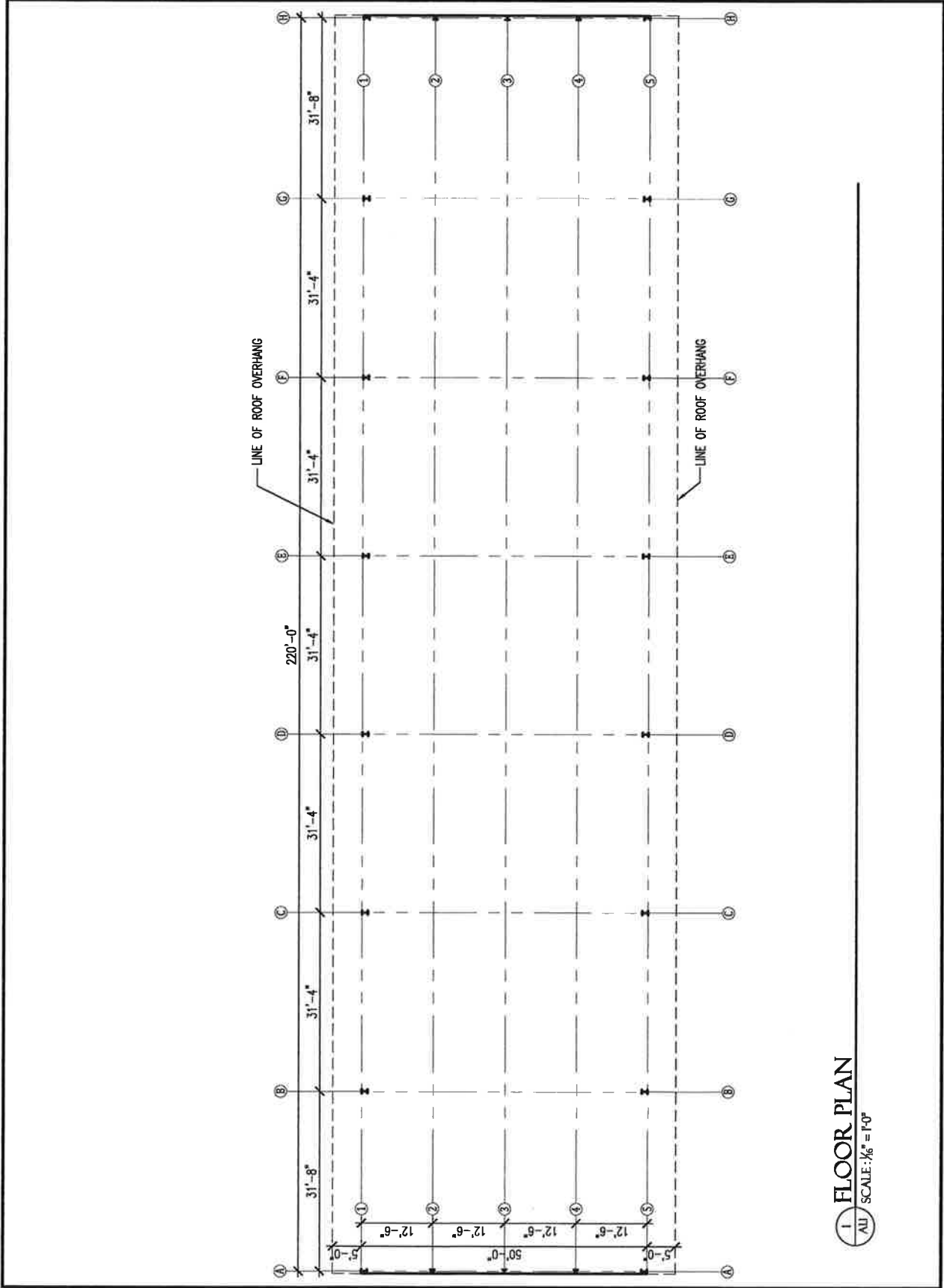


**DISTRICT 3 HEADQUARTERS
EQUIPMENT STORAGE BUILDING**
Hope, Arkansas
Hempstead County

DATE: JUNE 10, 2016
JOB NO. 3-40
DRAWN BY: KB
REVISIONS:

A1.1

3 OF 5

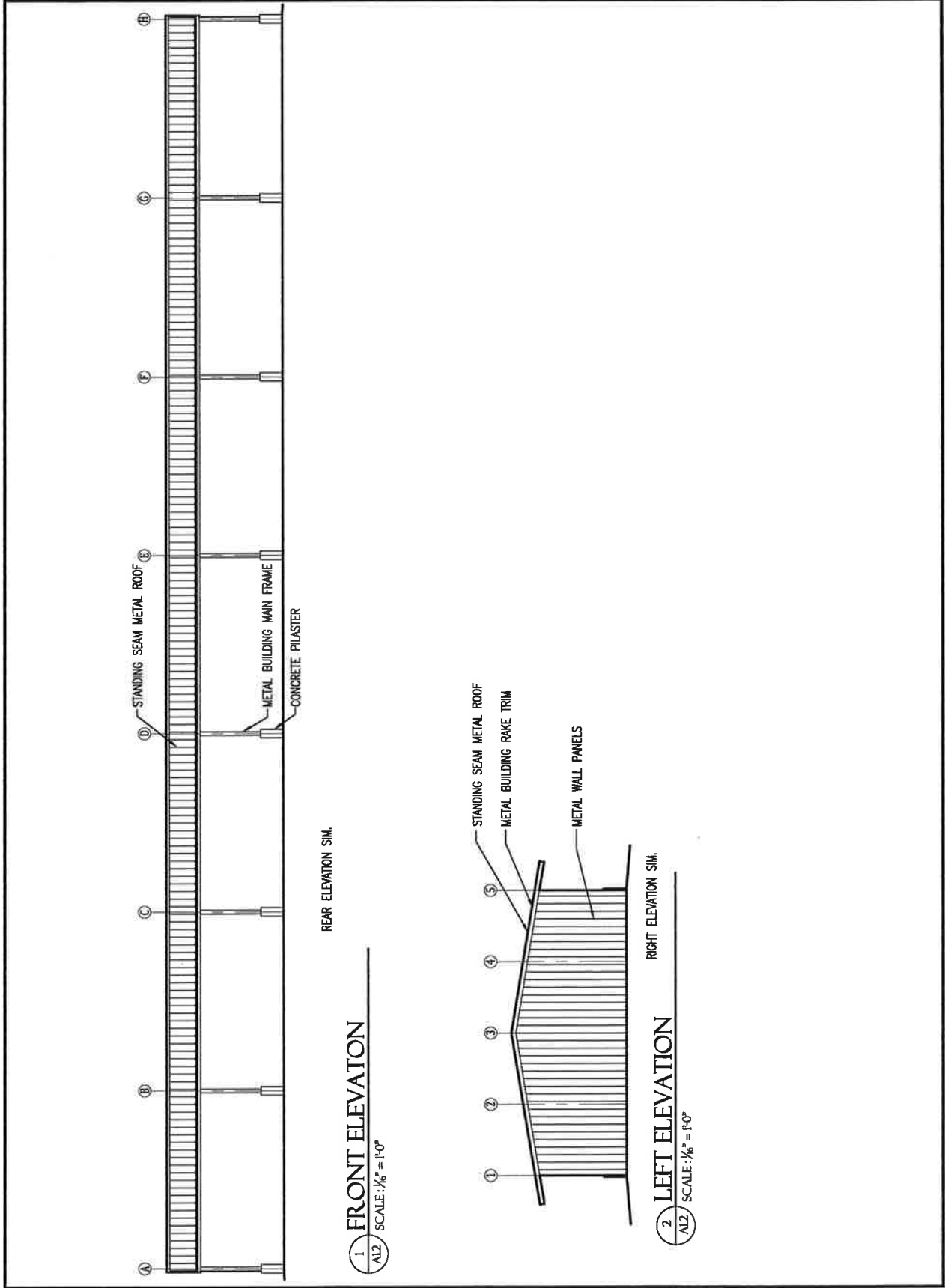




**DISTRICT 3 HEADQUARTERS
EQUIPMENT STORAGE BUILDING
Hope, Arkansas
Hempstead County**

DATE: JUNE 10, 2016
JOB NO: 3-40
DRAWN BY: KB
REVISIONS:

A1.2
4 OF 5



1 FRONT ELEVATION
SCALE: 1/8" = 1'-0"

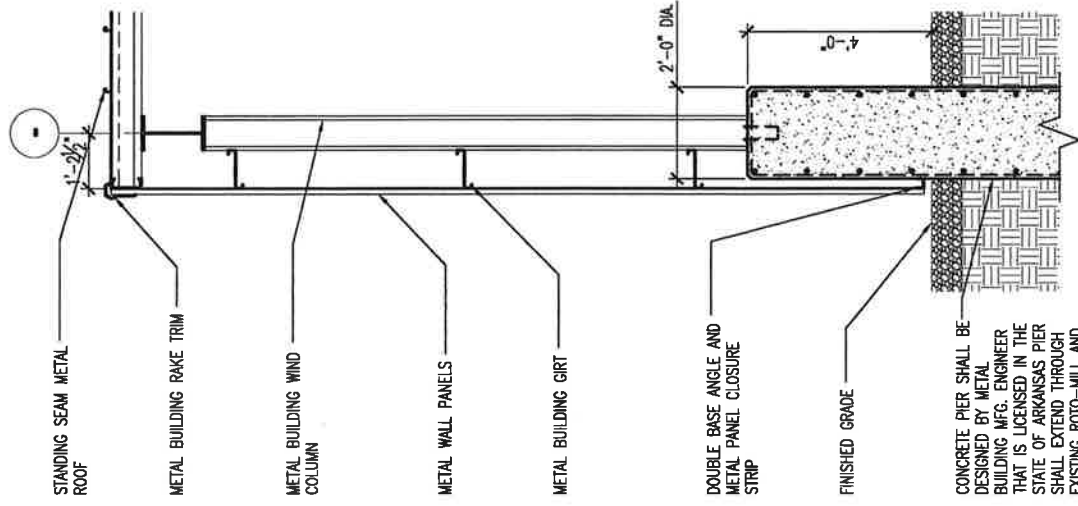
2 LEFT ELEVATION
SCALE: 1/8" = 1'-0"



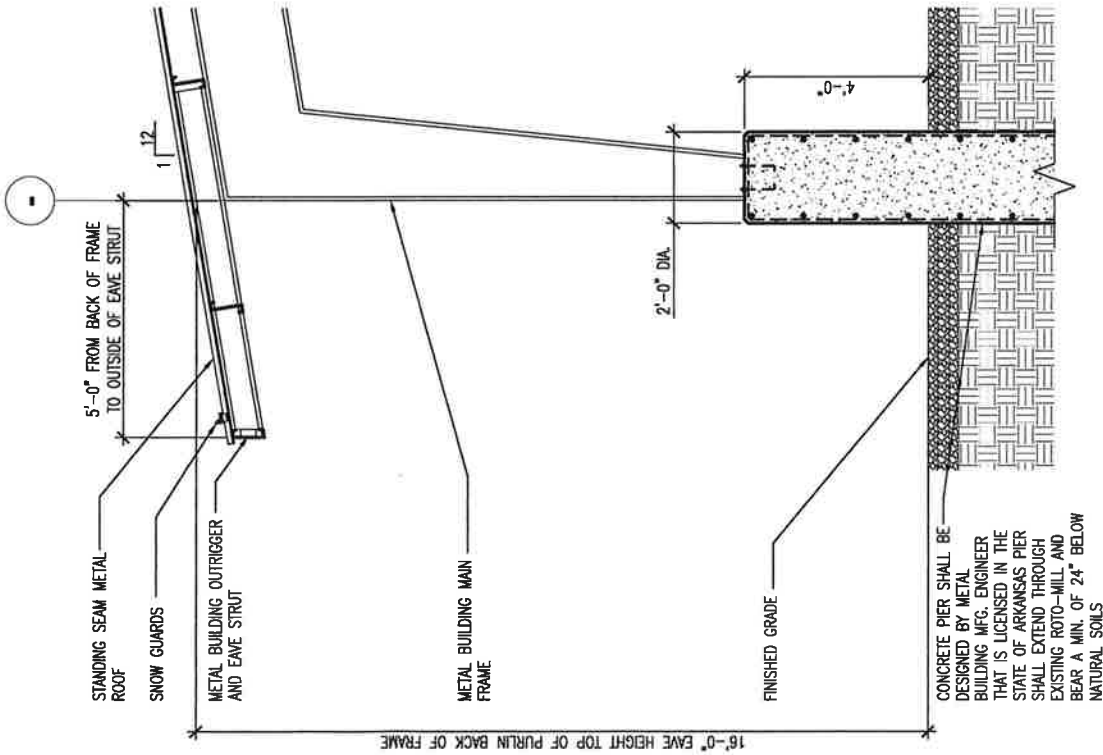
DISTRICT 3 HEADQUARTERS
EQUIPMENT STORAGE BUILDING
 Hope, Arkansas
 Hempstead County

DATE: JUNE 10, 2016
 JOB NO. 3-40
 DRAWN BY: RB
 REVISIONS:

A1.3
 5 OF 5



2 WALL SECTION
 SCALE: 3/8" = 1'-0"



1 WALL SECTION
 SCALE: 3/8" = 1'-0"