

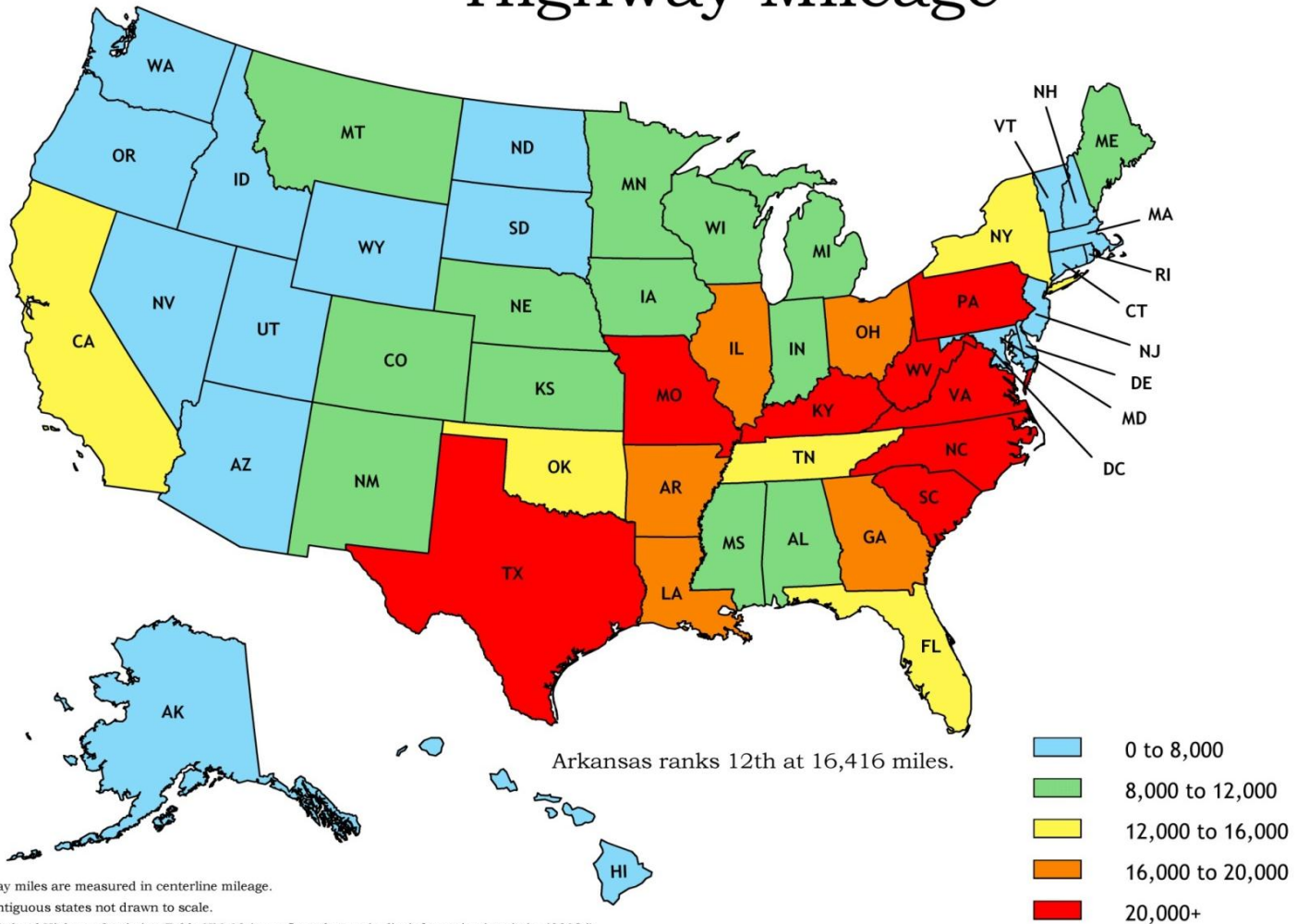
# Arkansas State Highway and Transportation Department



**Conway Business Expo**

Thursday, October 9, 2014

# Highway Mileage

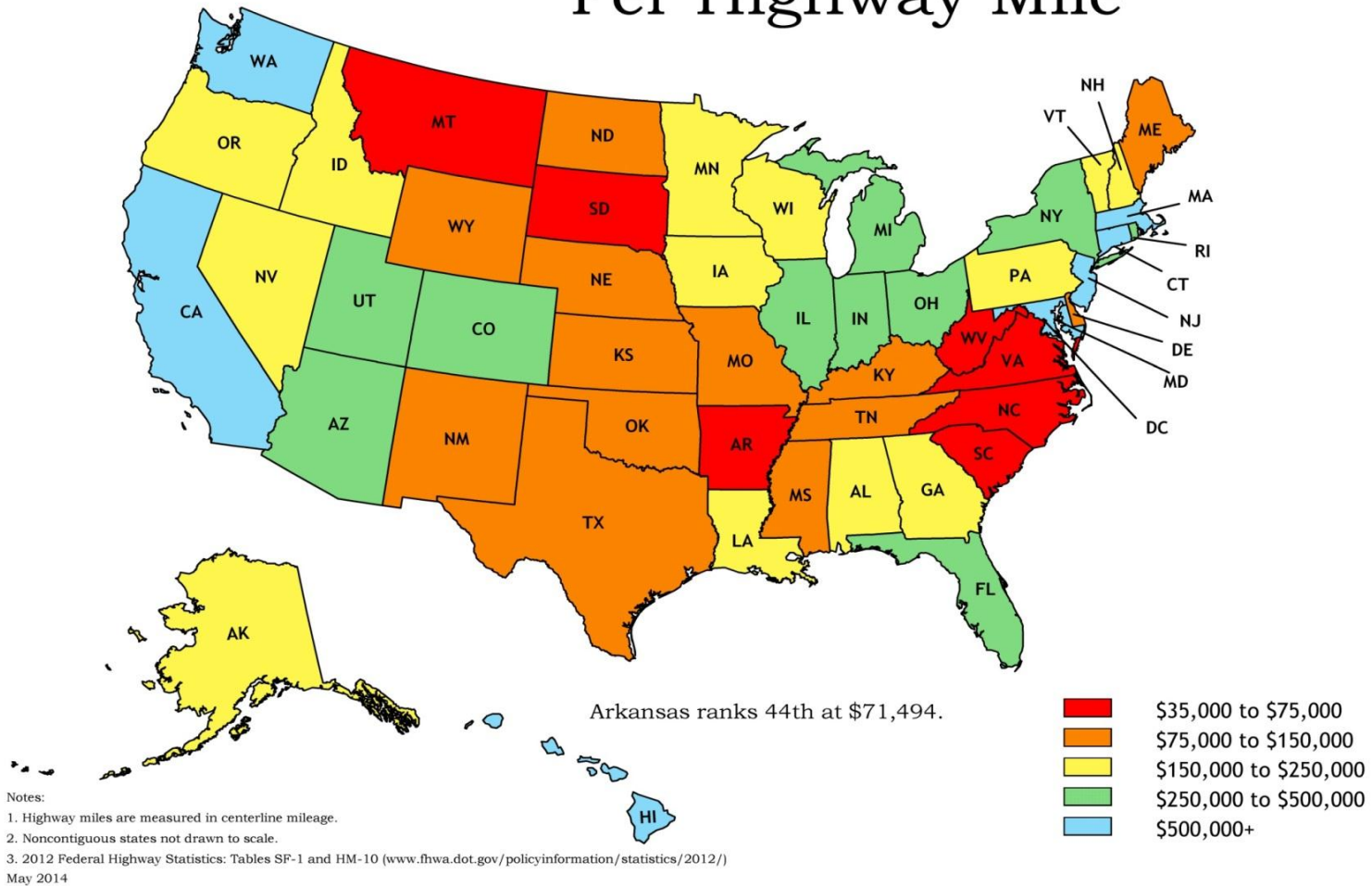


Notes:

1. Highway miles are measured in centerline mileage.
2. Noncontiguous states not drawn to scale.
3. 2012 Federal Highway Statistics: Table HM-10 ([www.fhwa.dot.gov/policyinformation/statistics/2012/](http://www.fhwa.dot.gov/policyinformation/statistics/2012/))  
May 2014

Arkansas ranks 12<sup>th</sup> in number of miles  
at 16,416 miles

# State and Federal Revenues Per Highway Mile



Arkansas ranks 44<sup>th</sup> in revenue per mile  
at \$71,494

# Recent Voter Approved Programs

**November  
2011**



**November  
2012**





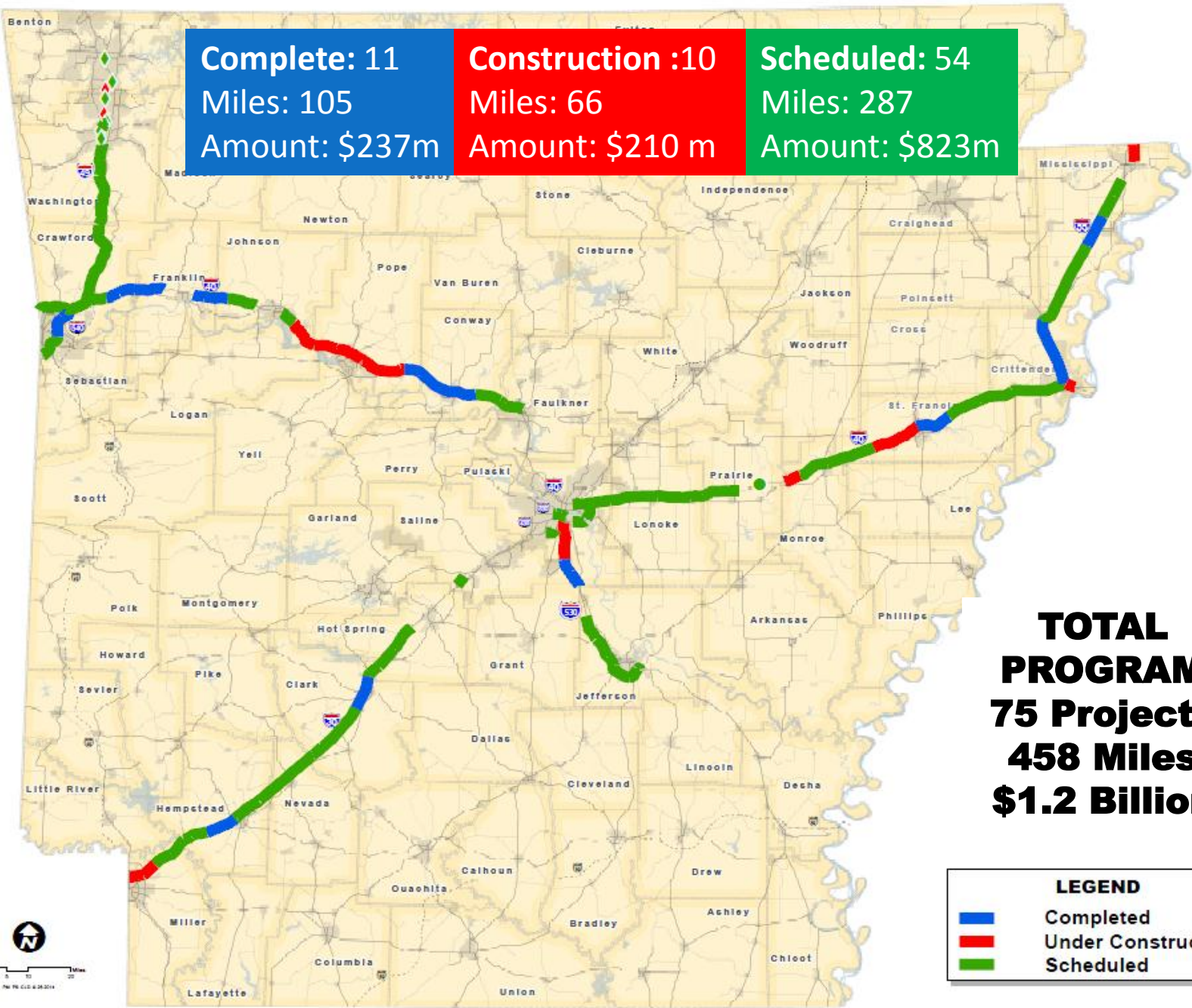
INTERSTATE  
REHABILITATION  
PROGRAM

*IRP*



# Interstate Rehabilitation Program Job Status

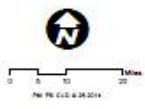
<b>Complete: 11</b> Miles: 105 Amount: \$237m	<b>Construction :10</b> Miles: 66 Amount: \$210 m	<b>Scheduled: 54</b> Miles: 287 Amount: \$823m
---	---	--



**TOTAL PROGRAM**  
**75 Projects**  
**458 Miles**  
**\$1.2 Billion**

**LEGEND**

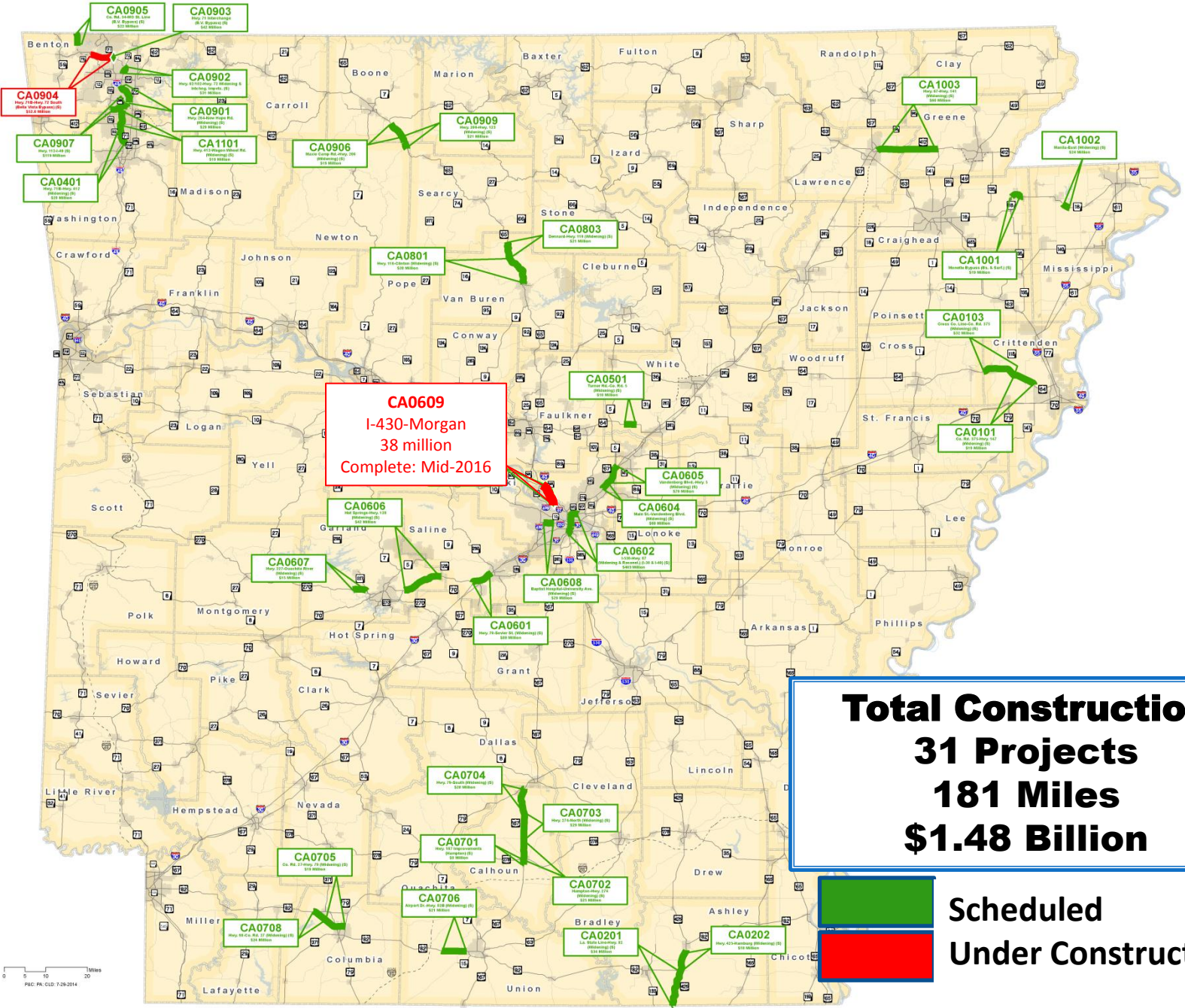
- Completed
- Under Construction
- Scheduled





- ✓ Connects Arkansas
- ✓ Increases Capacity
- ✓ 10-Year Revenue Cap

# Connecting Arkansas Program Job Status



**CA0609**  
I-430-Morgan  
38 million  
Complete: Mid-2016

**Total Construction**  
**31 Projects**  
**181 Miles**  
**\$1.48 Billion**



**Scheduled**  
**Under Construction**

0 5 10 20 Miles  
PAC-PR-GLD-7/29/2014







***Turnback Funds***  
**for cities and counties.**





## *Highway Revenue Distribution*

### **70/15/15 Formula**

- ✓ **70% Arkansas Highway & Transportation Dept**
- ✓ **15% Arkansas Counties**
- ✓ **15% Arkansas Cities**



## *Highway Revenue Distribution*

**\$700 million for Local Improvements**

✓ **\$350 million for *county roads***

✓ **\$350 million for *city streets***



# Turnback Funds *Faulkner County*

County/Cities	Ten Year Cumulative
Faulkner Co.	\$8,433,747
Conway	\$10,492,741
Enola	\$60,205
Greenbrier	\$838,237
Guy	\$126,110
Holland	\$99,213
Mayflower	\$397,922
Mt. Vernon	\$25,828
Twin Groves	\$59,670
Vilonia	\$679,531
Wooster	\$153,184

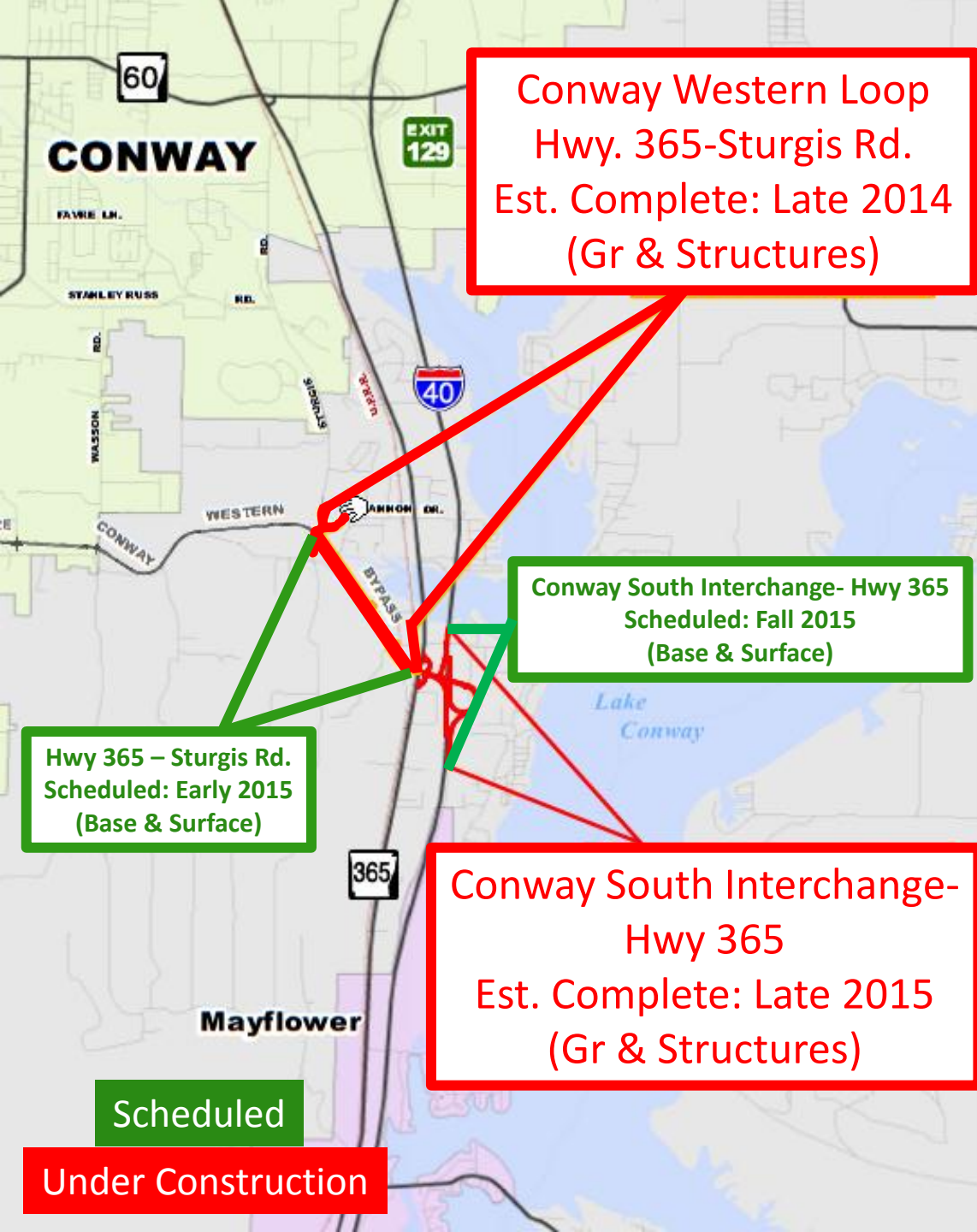


# Faulkner County Construction

Projects	Miles	Cost
Completed	175	\$208 million
Under Construction	18	\$37 million
Planned	42	\$78 million
<b>Total</b>	<b>235</b>	<b>\$323 million</b>

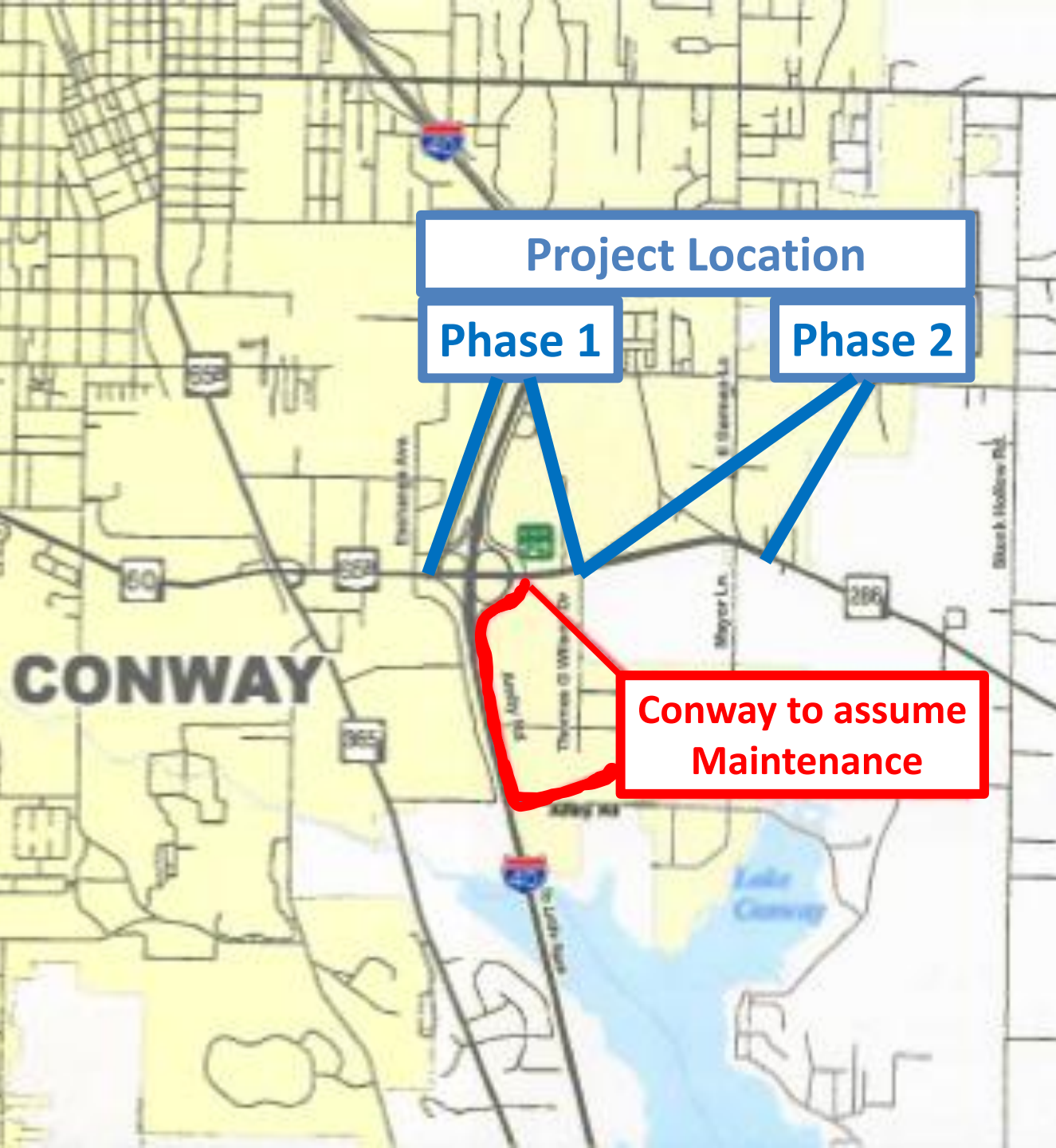






***South Interchange  
& Western Loop***





Project Location

Phase 1

Phase 2

Conway to assume Maintenance



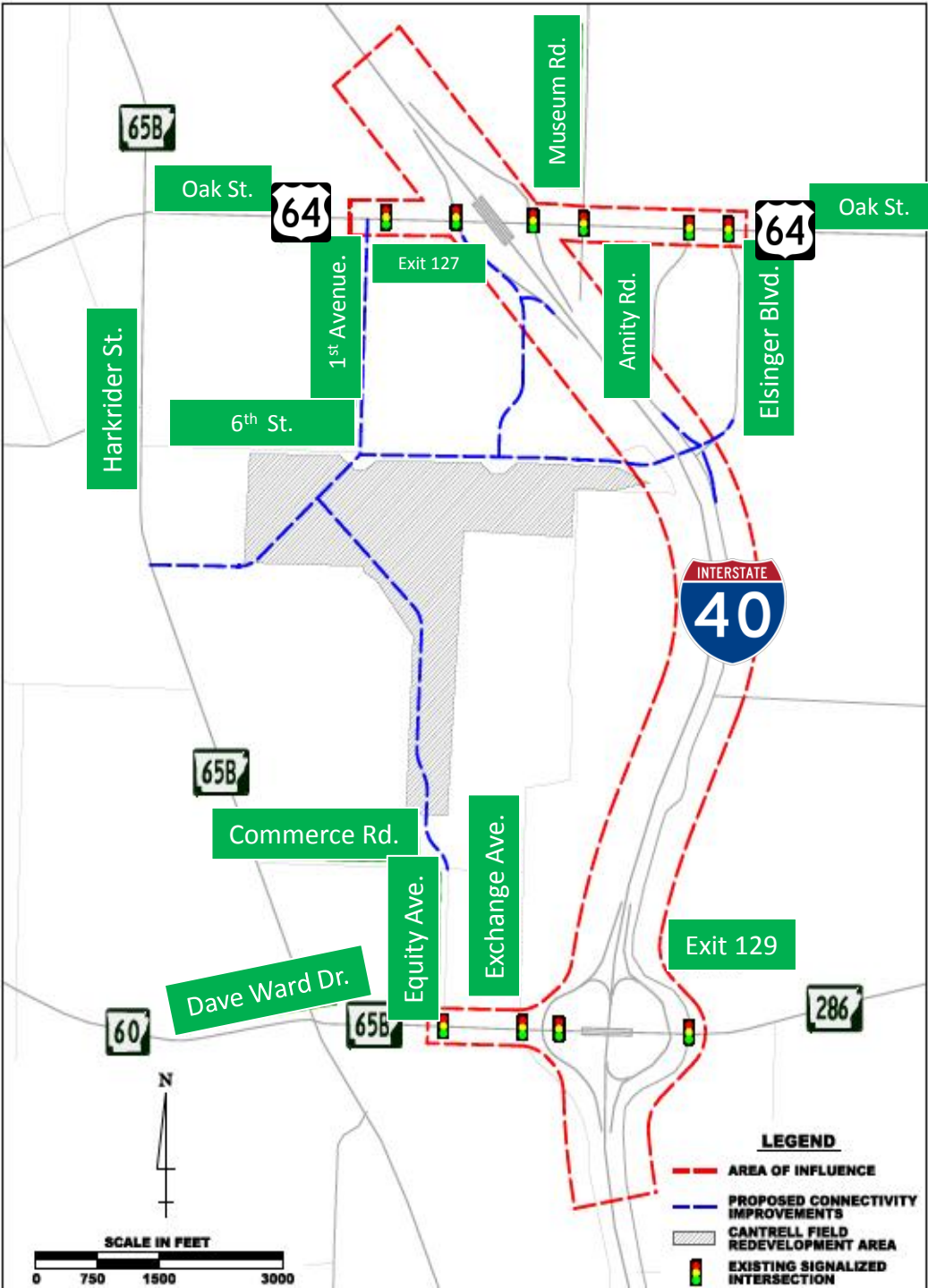




**Project Location**

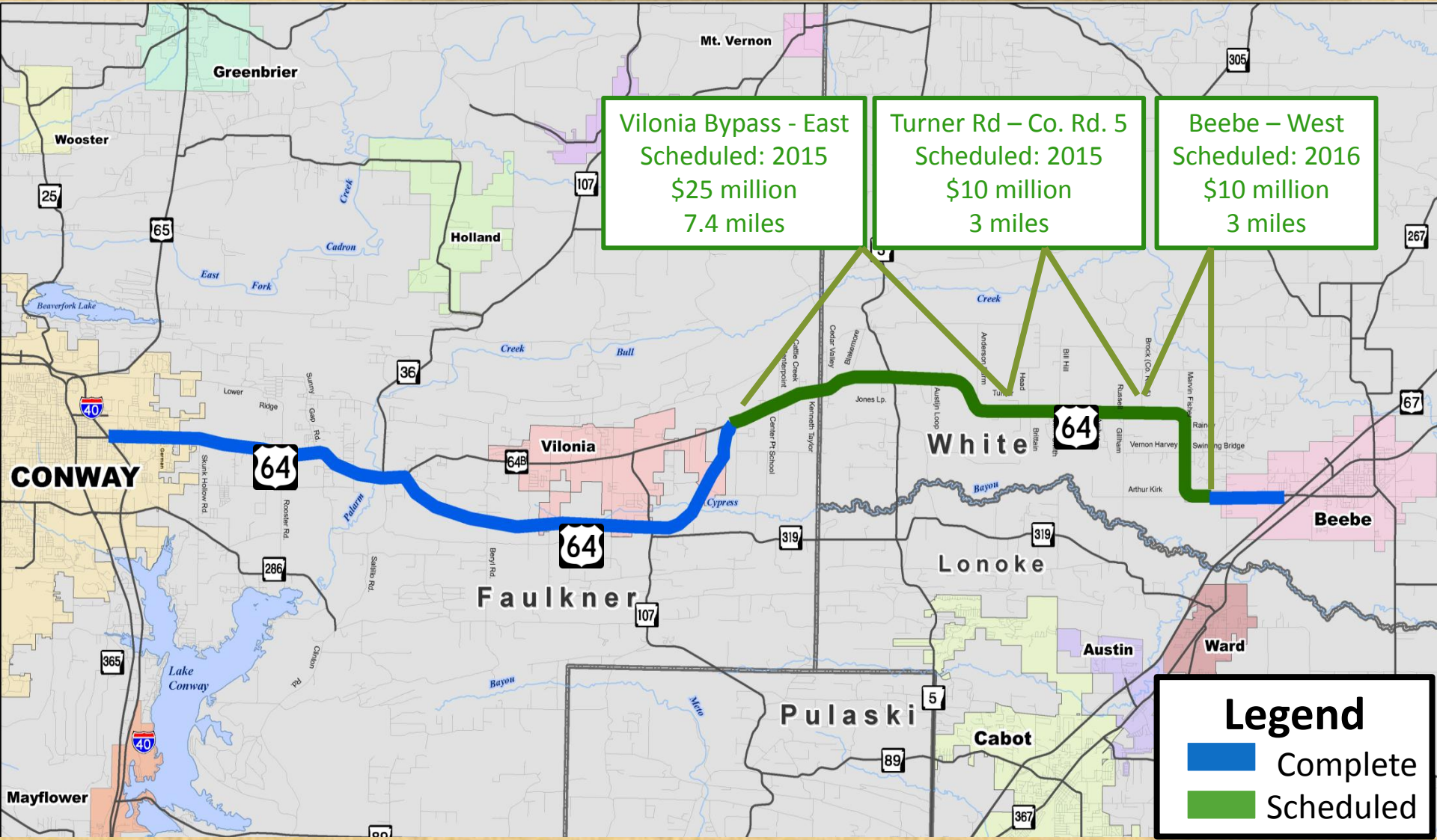


# Interchange Justification Report





# Conway to Beebe Widening





## *Relocation*

Est. Award Date: Late 2015  
Early 2016

Est. Cost: \$10-12 million  
Funding: Fed Aid STP Local  
Conway/Faulkner Co.:  
Paying 50%



## Broadway Bridge



### ➤ Construction

- ✓ Bid Letting: Sept 17
- ✓ Cost: \$98 million
- ✓ Construction Begins Early 2015
- ✓ Bridge Closed for 6 months



**Big Rock Interchange  
When is it complete??**





**Big Rock Interchange  
Complete: Mid 2015**



# I-30 Corridor Project Review

## Proposed Study Area

It is approximately 6.7 miles in length and extends through portions of Little Rock and North Little Rock.

The proposed study area extends:

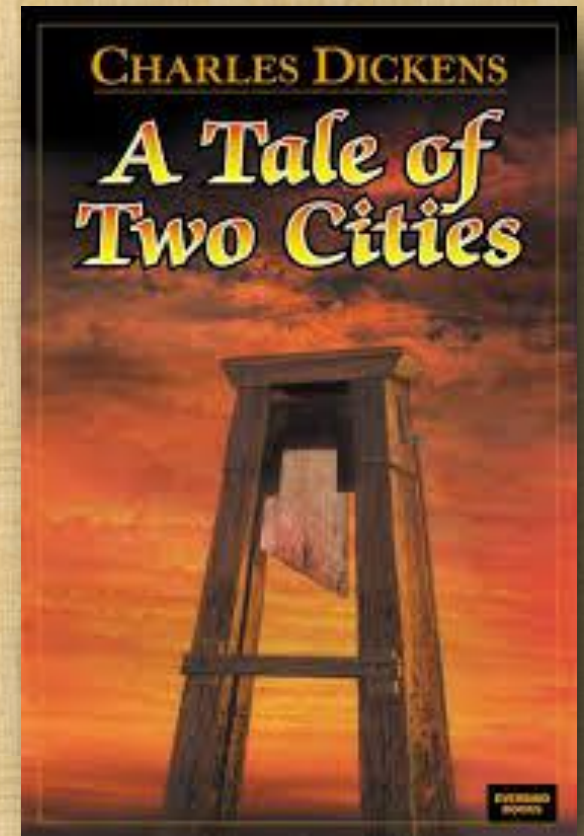
- along I-30 from I-530 to the south and I-40 to the north
- along I-40 to its interchange with U.S. 67 in North Little Rock.





***“It was the best of times,  
it was the worst of times, . . .”***




*-A Tale of Two Cities*  
Charles Dickens





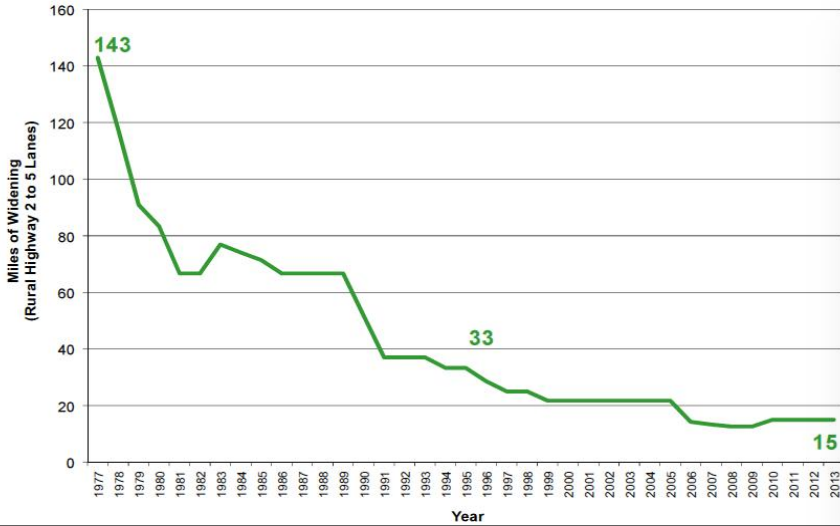
# Arkansas Travel Trends

2007-2013

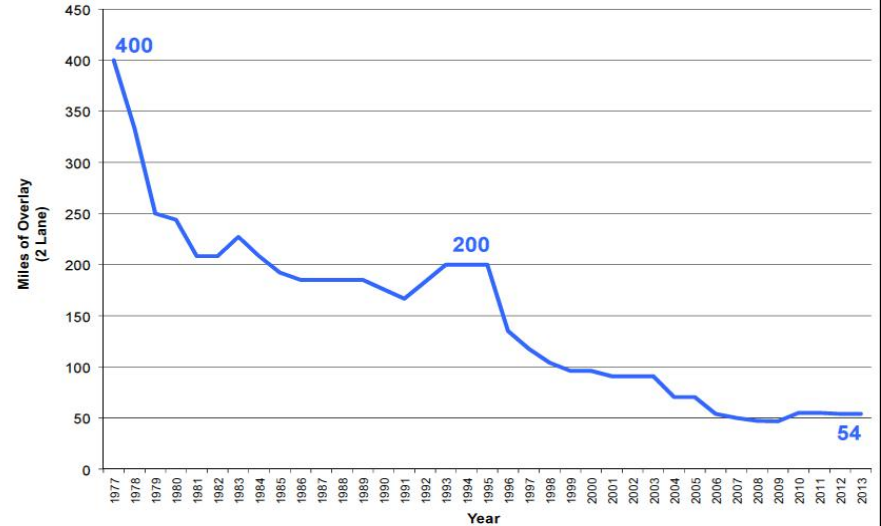
	2007	2013	Difference
<b>Gas &amp; diesel Consumption</b>	2.087 billion	2.001 billion	 86 million
<b>Gas &amp; diesel Revenue</b>	\$454 million	\$400 million	 \$54 million
<b>Miles Traveled</b>	32.4 billion	33.5 billion	 1.1 billion

# The Shrinking Highway Dollar

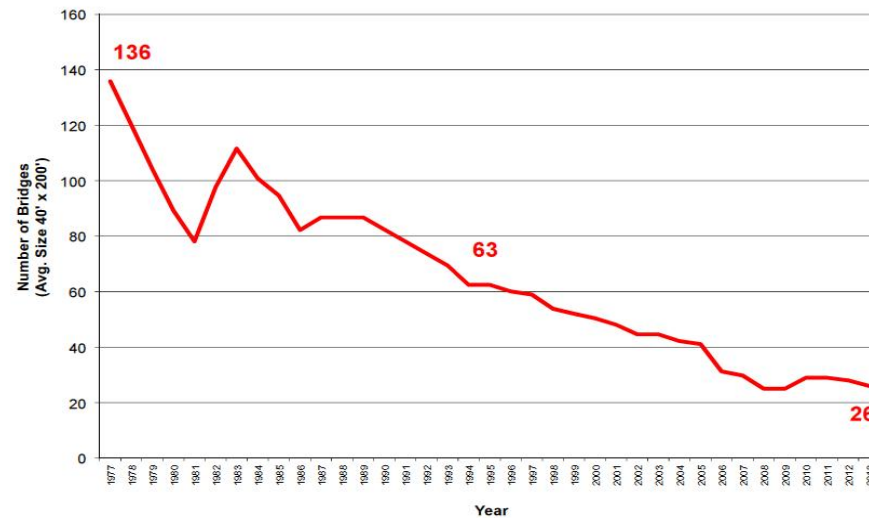
**\$100,000,000 Widening Program**



**\$10,000,000 Overlay Program**



**\$25,000,000 Bridge Program**



# Needs vs. *Revenue*



= 180 miles



= 450 miles

# Needs vs. *Revenue*



+



**Total = 630 miles**

**3.8%**

# Quality of Infrastructure

## 2008-2009

Rank	Country/Economy	Score
1	Switzerland	6.8
2	Singapore	6.7
3	Germany	6.6
4	France	6.6
5	Finland	6.5
6	Austria	6.5
7	Denmark	6.4
8	Hong Kong	6.3
<b>9</b>	<b>United States</b>	<b>6.1</b>
10	Canada	6.0
11	United Arab Emirates	6.0
12	Sweden	6.0
13	Iceland	5.9

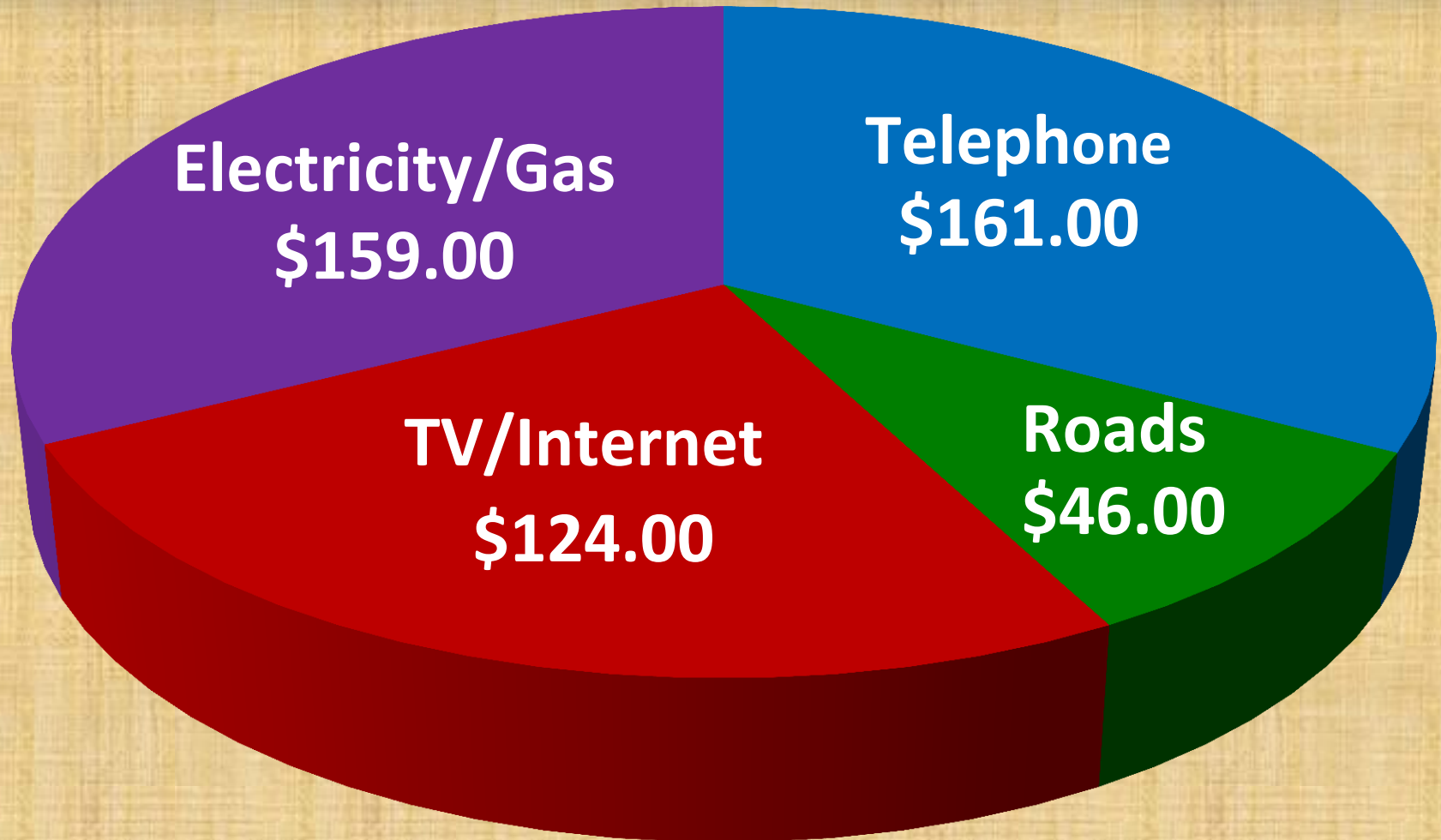
Rank	Country/Economy	Score
14	Luxembourg	5.9
15	Belgium	5.8
16	Japan	5.7
17	Netherlands	5.6
18	Korea	5.6
19	Malaysia	5.6
20	Barbados	5.5
21	Cyprus	5.5
22	China	5.5
23	Portugal	5.4
24	United Kingdom	5.3
25	Australia	5.2

# Quality of Infrastructure 2012-2013

Rank	Country/Economy	Score
1	Switzerland	6.6
2	Singapore	6.5
3	Finland	6.5
4	Hong Kong	6.5
5	France	6.4
6	United Arab Emirates	6.4
7	Iceland	6.3
8	Austria	6.3
9	Germany	6.2
10	Netherlands	6.2
11	Portugal	6.2
12	Luxembourg	6.2
13	Denmark	6.0

Rank	Country/Economy	Score
14	Bahrain	6.0
15	Canada	6.0
16	Japan	5.9
17	Belgium	5.9
18	Spain	5.8
19	Sweden	5.8
20	Oman	5.8
21	Barbados	5.8
22	Korea	5.8
23	Saudi Arabia	5.8
24	United Kingdom	5.6
<b>25</b>	<b>United States</b>	<b>5.6</b>

# Average Monthly Household Expenditures







[ArkansasHighways.com](https://www.arkansashighways.com)

Litter Hotline 866-811-1222



[@AHTD](https://twitter.com/AHTD)

