

# Arkansas State Highway and Transportation Department



**Bella Vista Rotary Club**

Wednesday, August 12, 2015



# AHTD *Quick Facts*

- 3rd Largest State Agency (3,634 employees)
- Maintain 16,416 miles of highway and 7,335 bridges
- Central Offices in Little Rock; 10 Districts Statewide
- Mission: Provide a safe, efficient, aesthetically pleasing and environmentally sound intermodal transportation system for the user.



# Highway Districts



District Headquarters



# Other Programs/Activities

State Aid Programs for Cities and Counties

Game & Fish Roads

State Park Roads

Institutional Roads

Airport Access Roads

Welcome Centers & Rest Areas

Arkansas Recreational Trails

Transportation Alternatives Program



# Other Programs/Activities

Arkansas Commercial Truck Safety and Education Program

Historic Bridge Program

Adopt-A-Highway Program

Litter Hotline

Public Transportation Programs

Wildflower Program

Research Grants to State Universities

Scholarships for Engineering Students





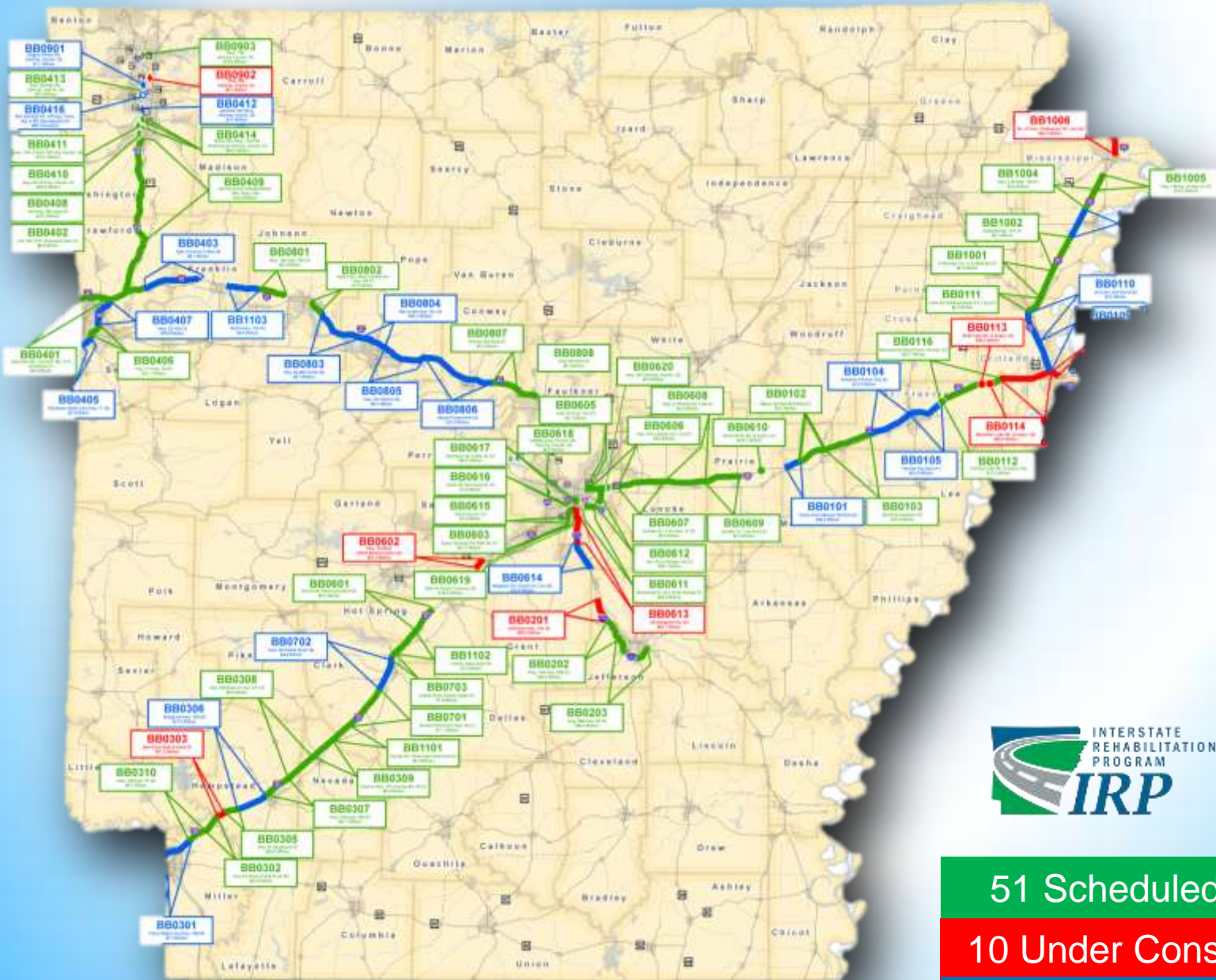
**2011**



**2012**



# Interstate Rehabilitation Program



51 Scheduled

10 Under Const.

21 Complete

# Connecting Arkansas Program



31 Scheduled  
4 Under Construction  
0 Complete

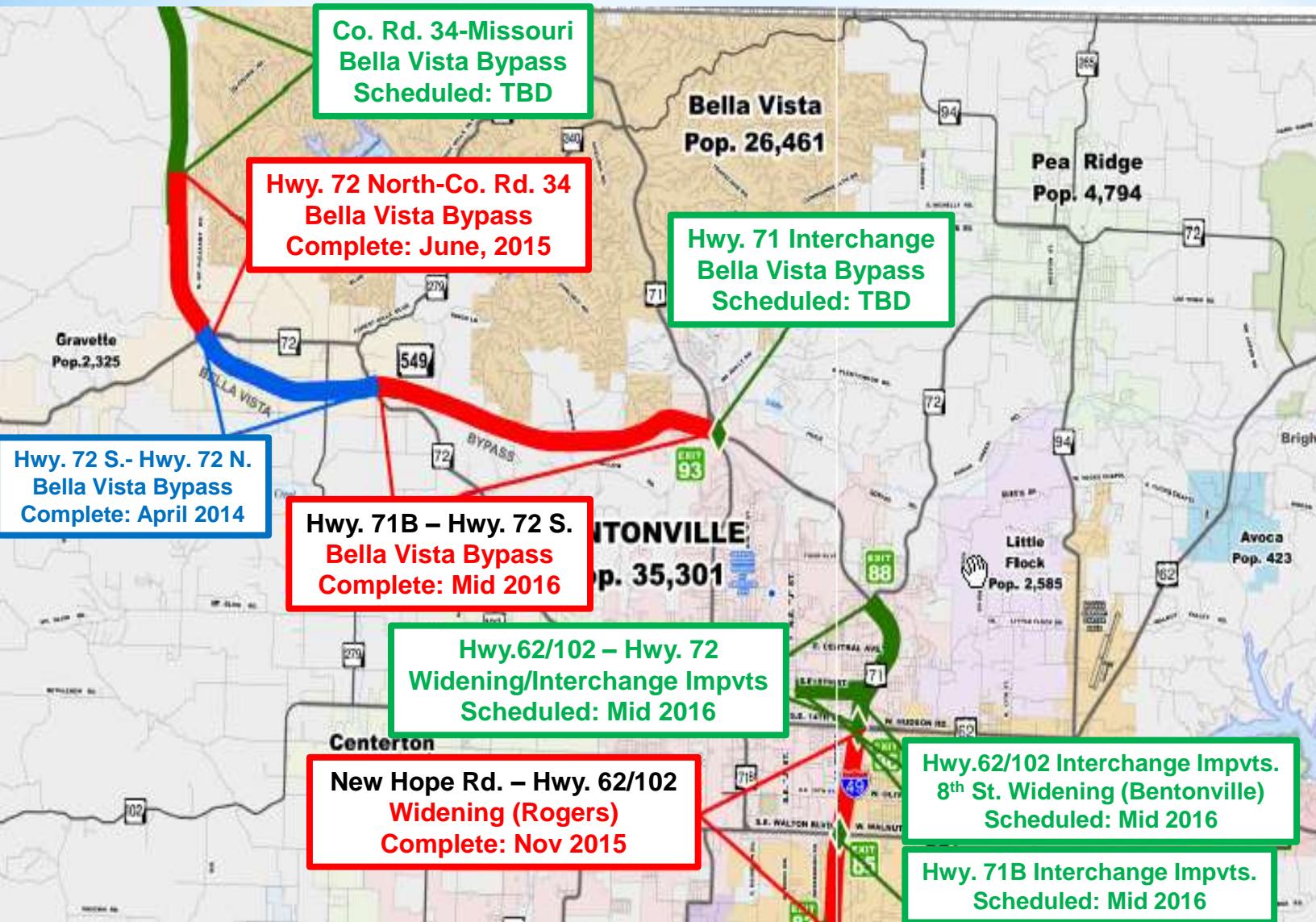


# Benton & Washington County Construction

Projects	Number	Cost
Complete	295	\$413 million
Under Construction	50	\$278 million
Scheduled	173	\$657 million
<b>Total</b>	<b>518</b>	<b>\$1.3 billion</b>



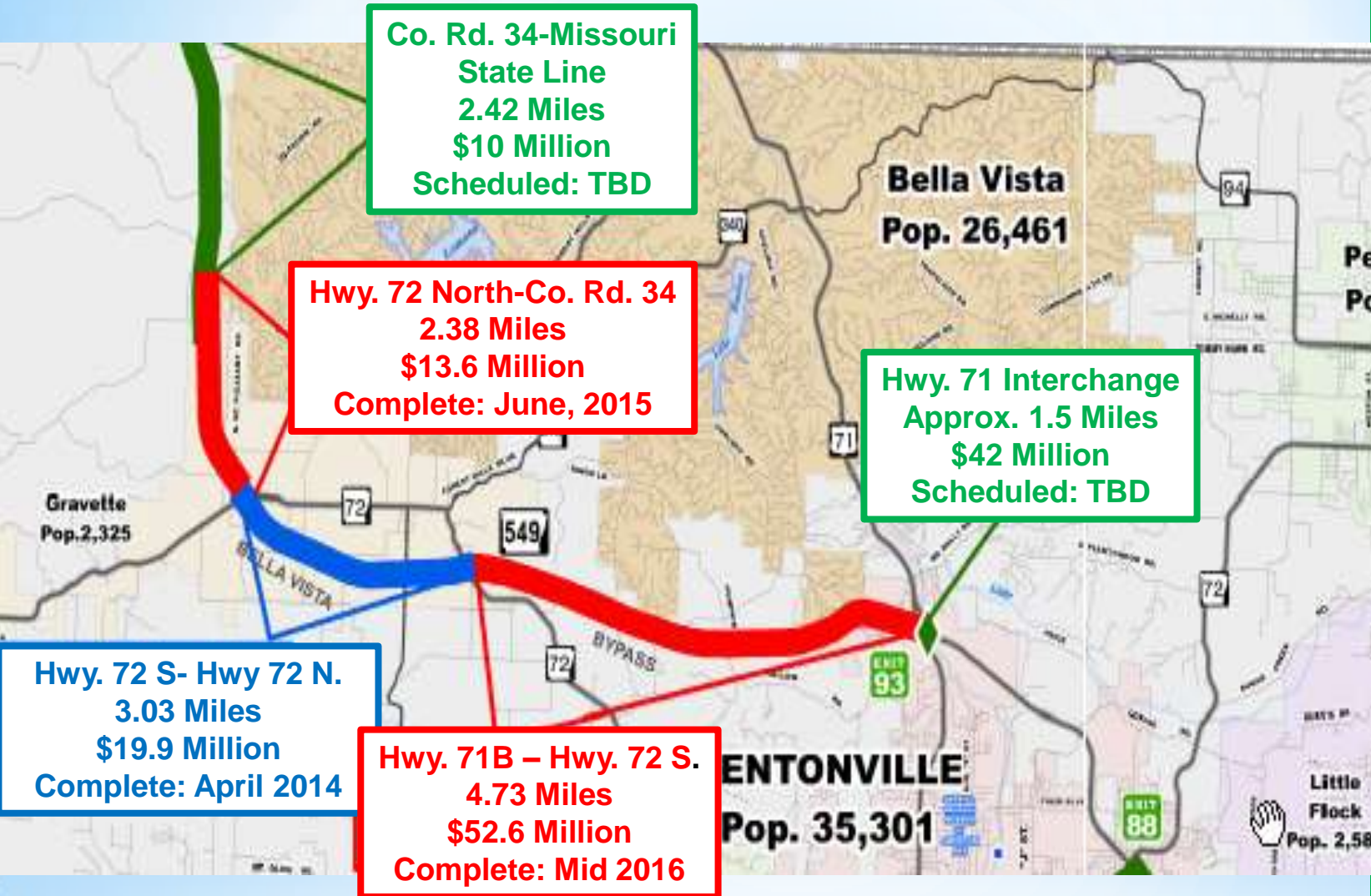
# Northwest Arkansas Projects



Scheduled Under Construction Complete



# Northwest Arkansas Projects



Scheduled

Under Construction

Complete



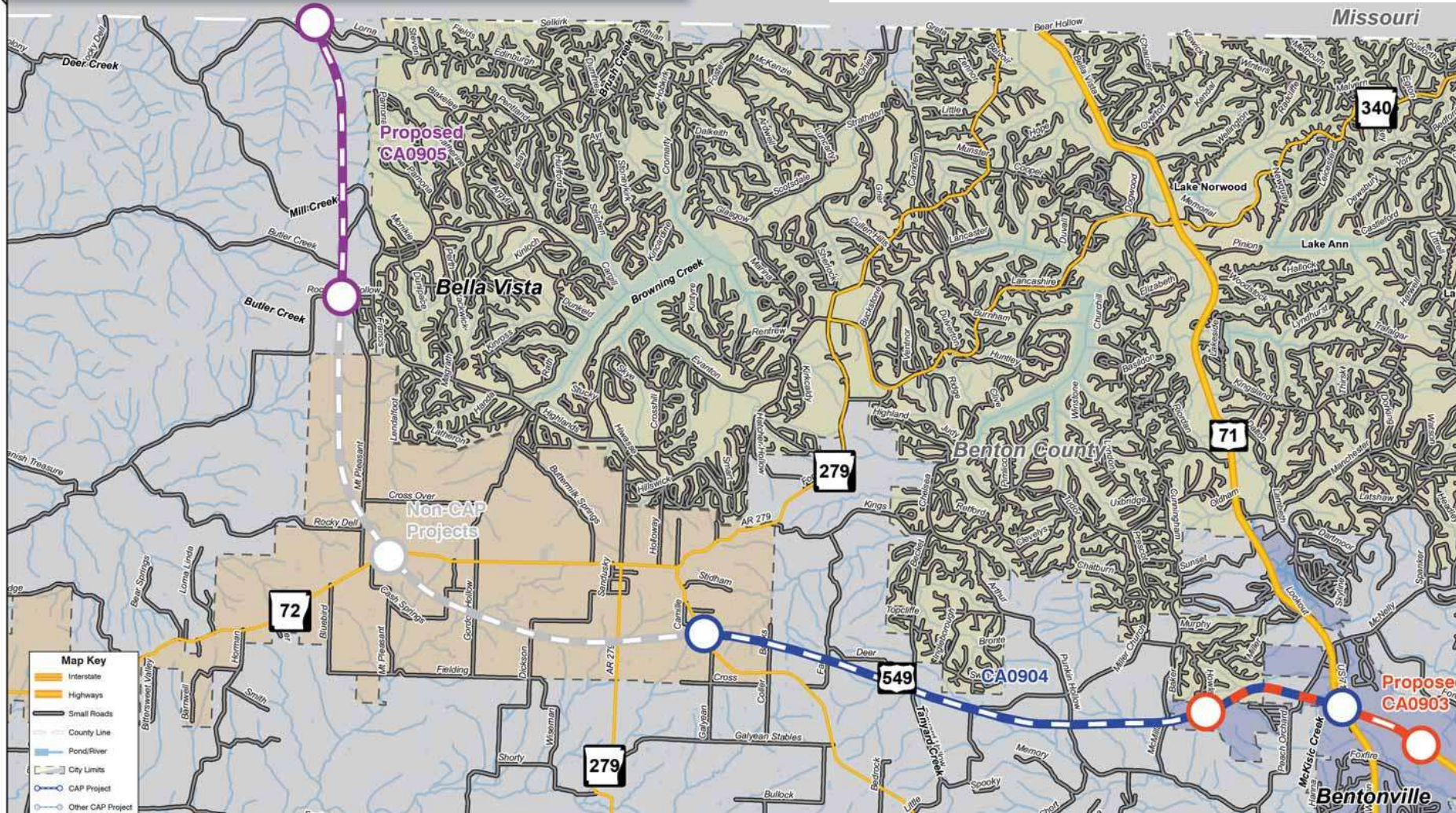


## Highway 549 Benton County

Job CA0903 Highway 71 Interchange  
Job CA0904 Highway 71B - Highway 72 South  
Job CA0905 County Road 34 - Missouri State Line

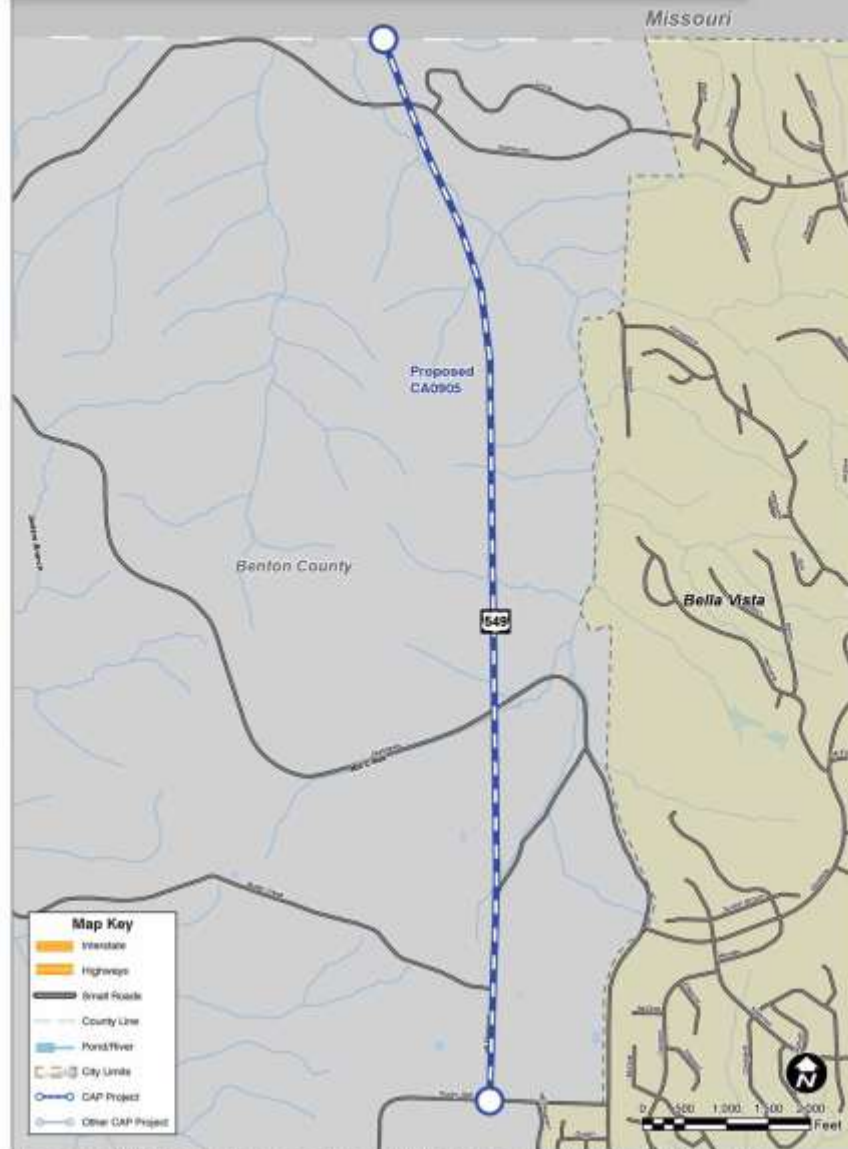
These projects are part of the Bella Vista Bypass corridor that will connect in the future with Interstate 49 in McDonald County, Missouri.

Totals: 14.3 Miles  
\$86.1 Million Under Contract or Com  
\$52 Million Estimated Amount for Las  
\$138 Million Total





**CA0905**  
**County Road 34 – Missouri State Line**  
**Highway 549**



\*These project limits are preliminary and are subject to change as project development progresses.





# CA0904 Highway 71B – Highway 72 South Highway 549



# Bella Vista Bypass

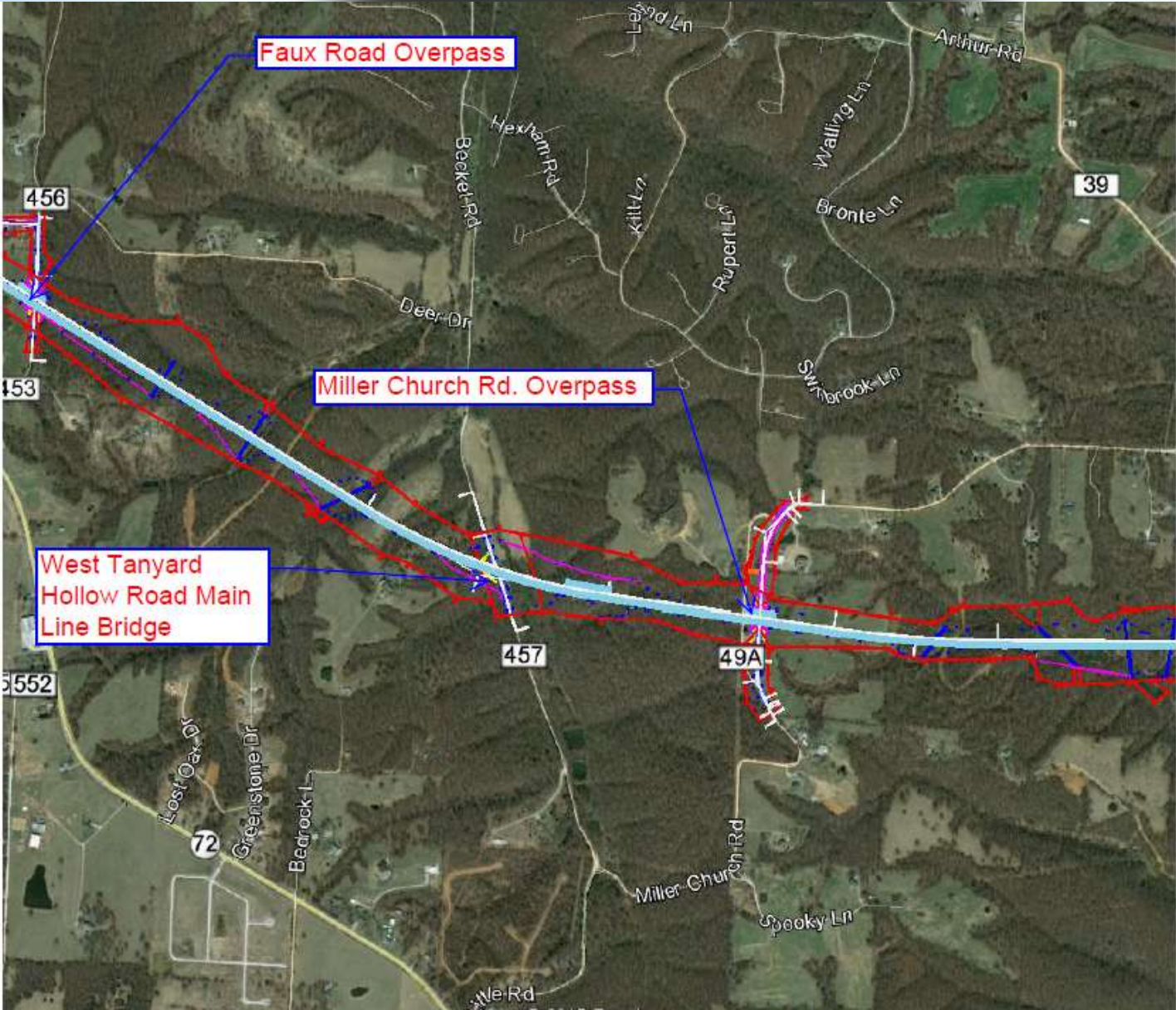


Northwest Arkansas  
Projects



# Bella Vista Bypass

# Northwest Arkansas Projects





# Bella Vista Bypass

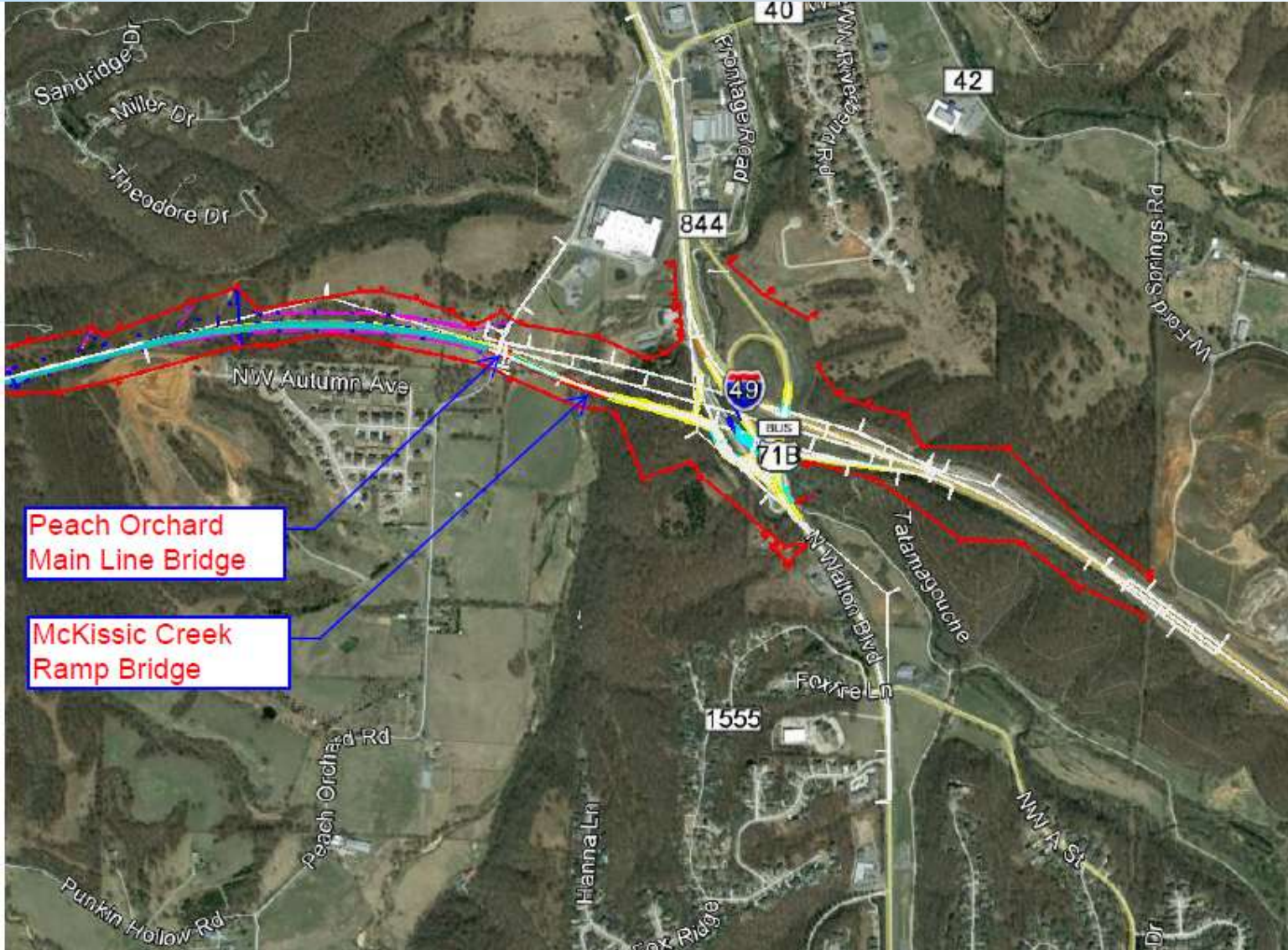


Northwest Arkansas  
Projects

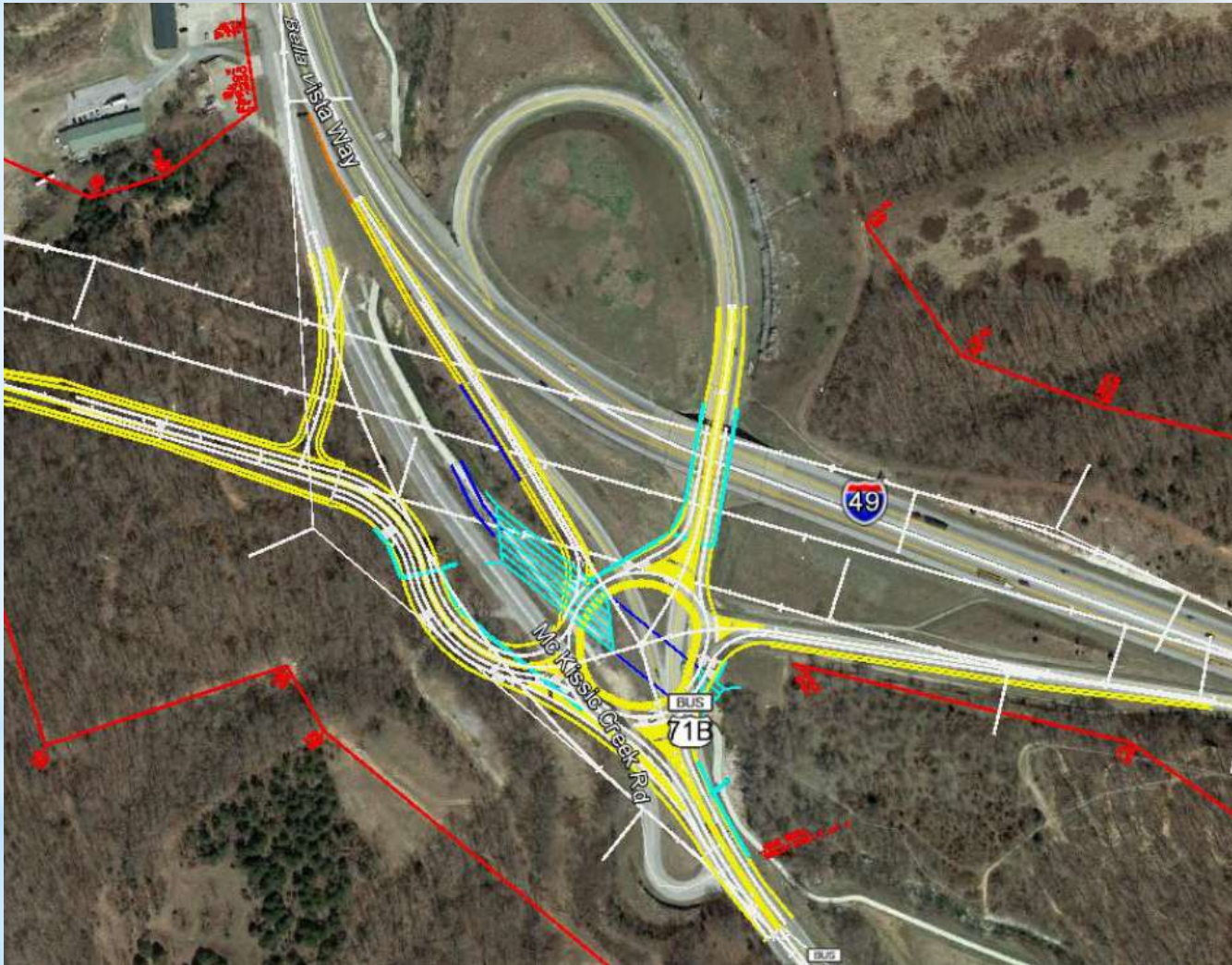


# Bella Vista Bypass

# Northwest Arkansas Projects



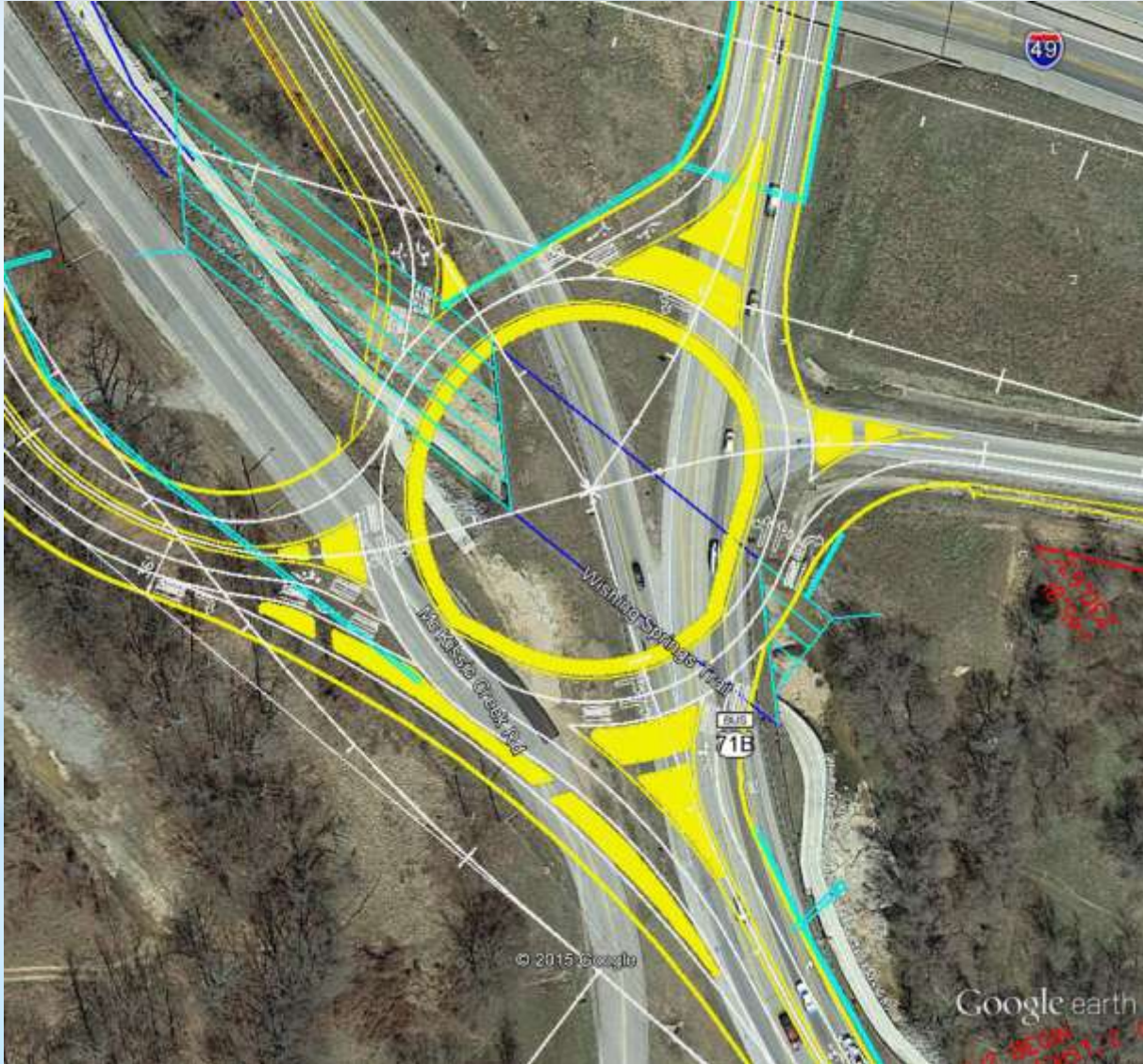
# Bella Vista Bypass Roundabout



Northwest Arkansas  
Projects



# Bella Vista Bypass Roundabout

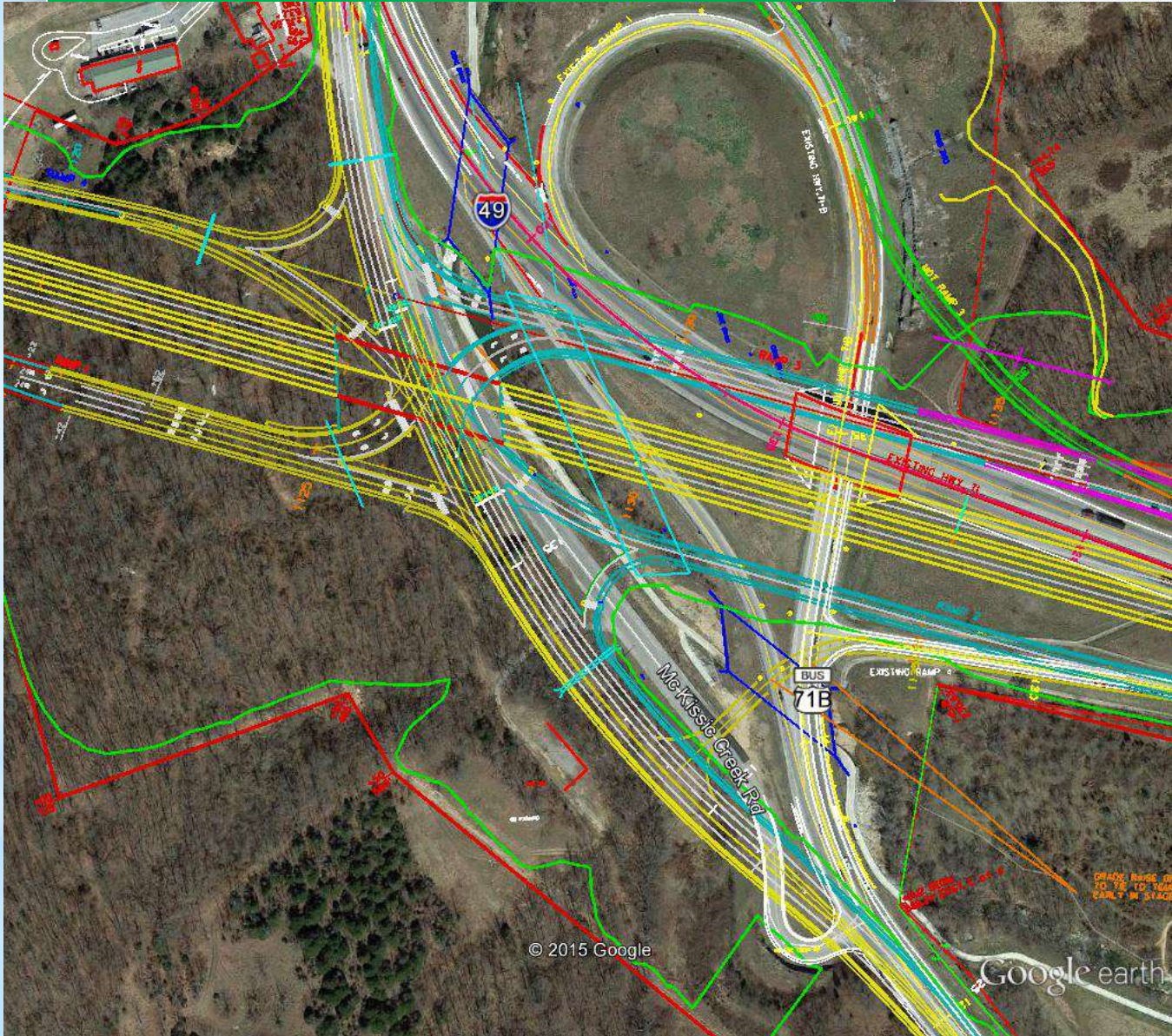


Northwest Arkansas  
Projects

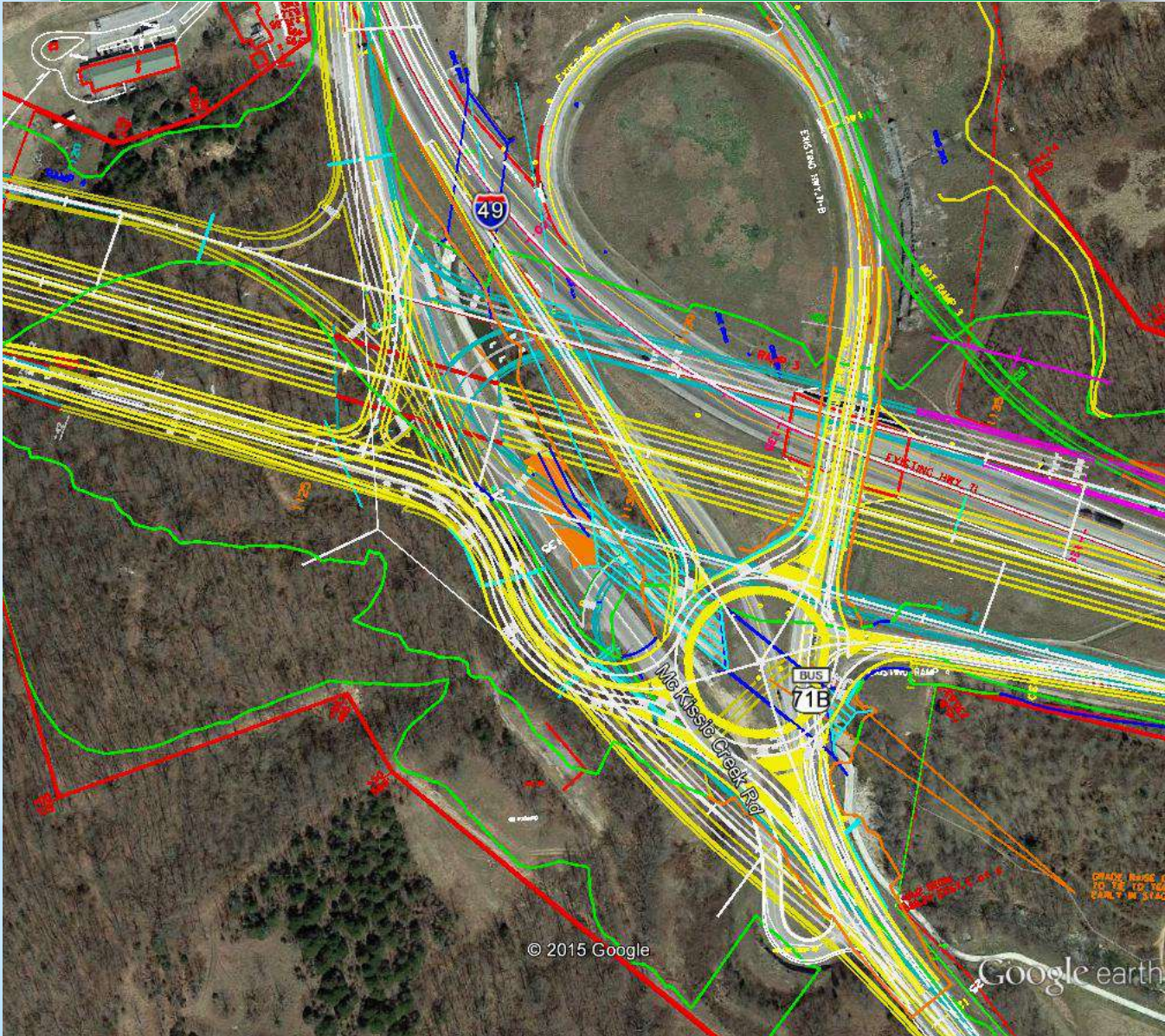


# Bella Vista Bypass SPUI

# Northwest Arkansas Projects



# Bella Vista Bypass SPUI & RA



© 2015 Google

Google earth

# Northwest Arkansas Projects





Bella Vista  
Bypass

71  
BUS



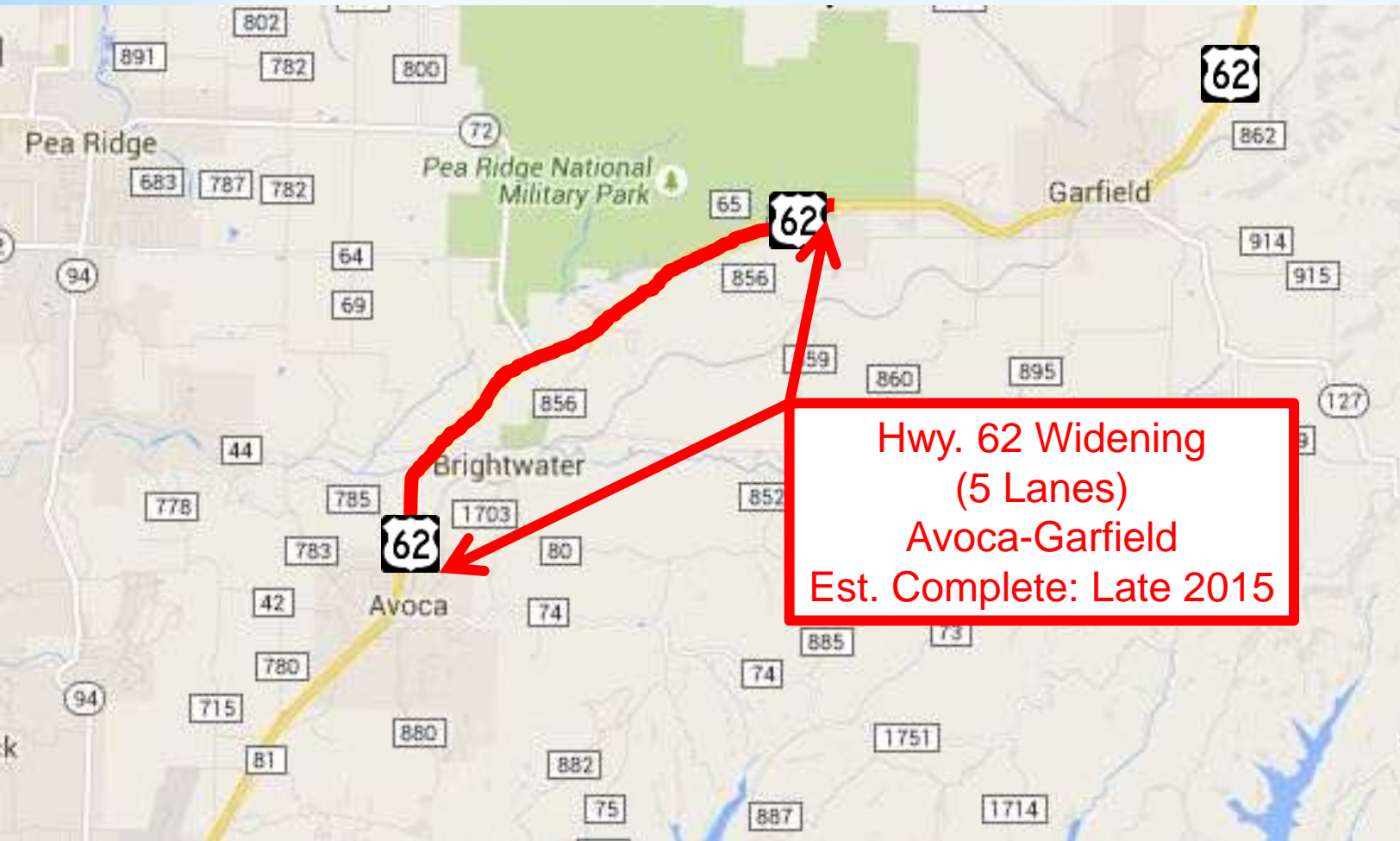
# Northwest Arkansas Projects



Scheduled Under Construction Complete

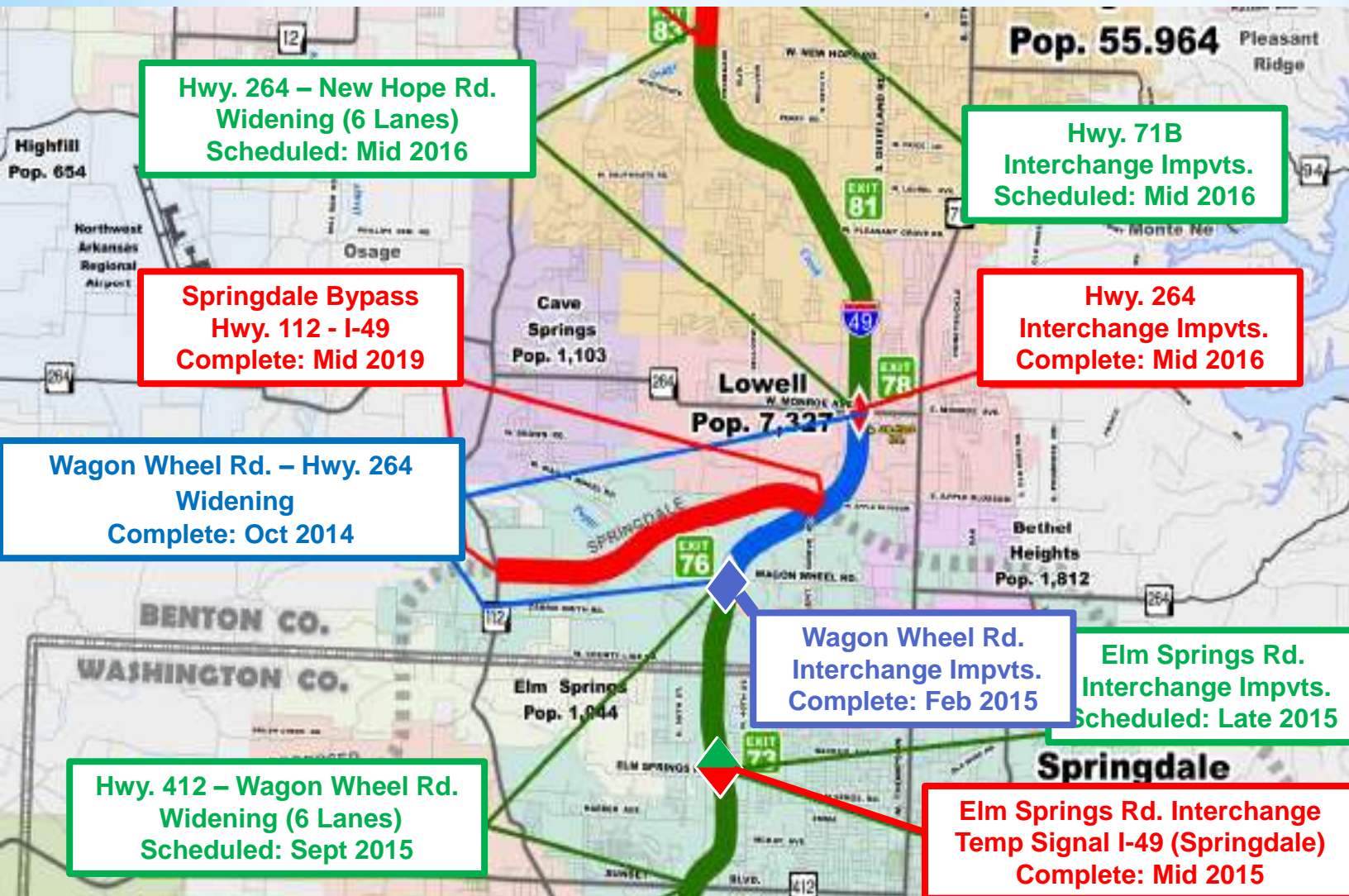


# Northwest Arkansas Projects



Scheduled Under Construction Complete

# Northwest Arkansas Projects



Scheduled Under Construction Complete





# Construction

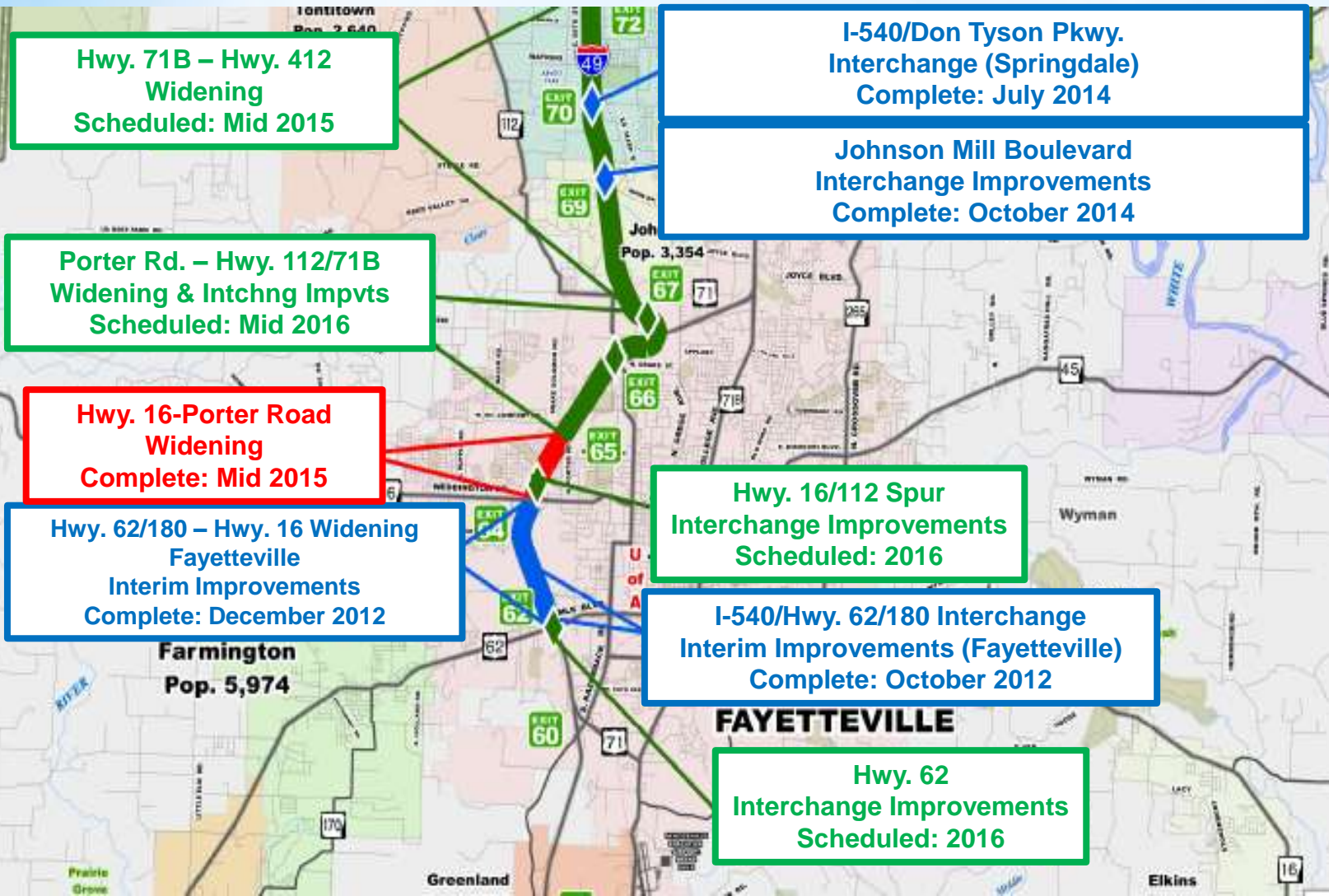
Springdale Bypass  
Hwy. 112 - I-49  
\$100 million  
Complete: Mid 2019



Northwest Arkansas  
Projects



# Northwest Arkansas Projects

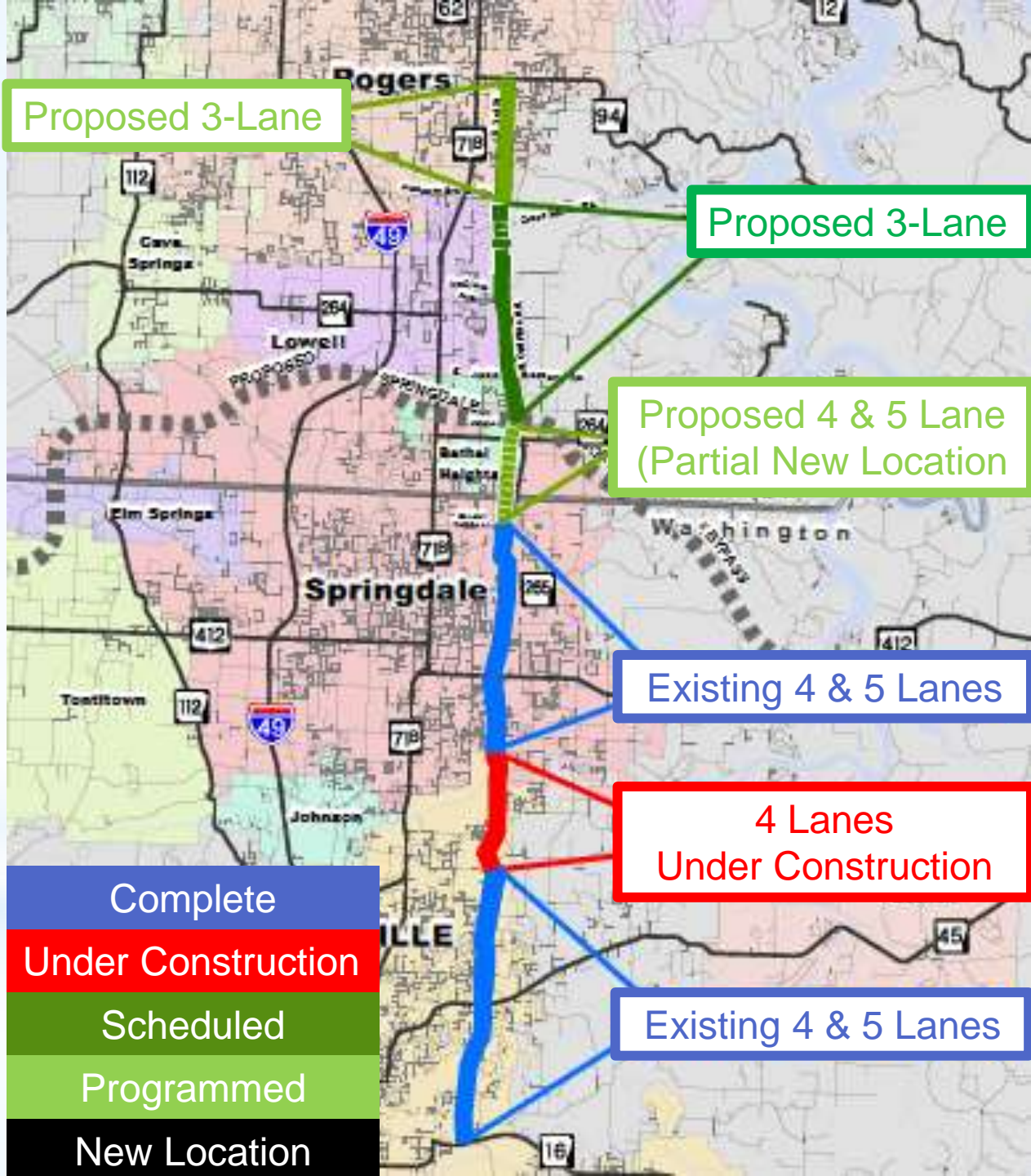


Scheduled Under Construction Complete



Eastern N-S Corridor  
Construction

Fayetteville-E. Joyce Blvd.





# Winter Weather Improvements



Belly Plows Added to Fleet



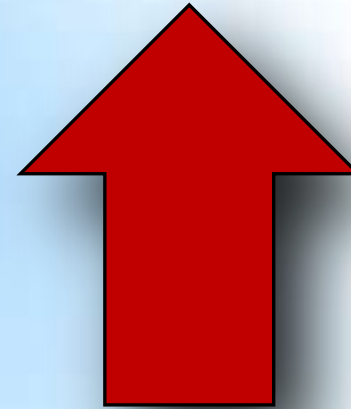
## Snow & Ice Removal Guide



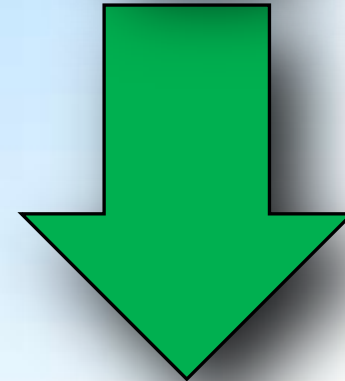
Snow & Ice Removal Guide



**Costs**






**Revenue**





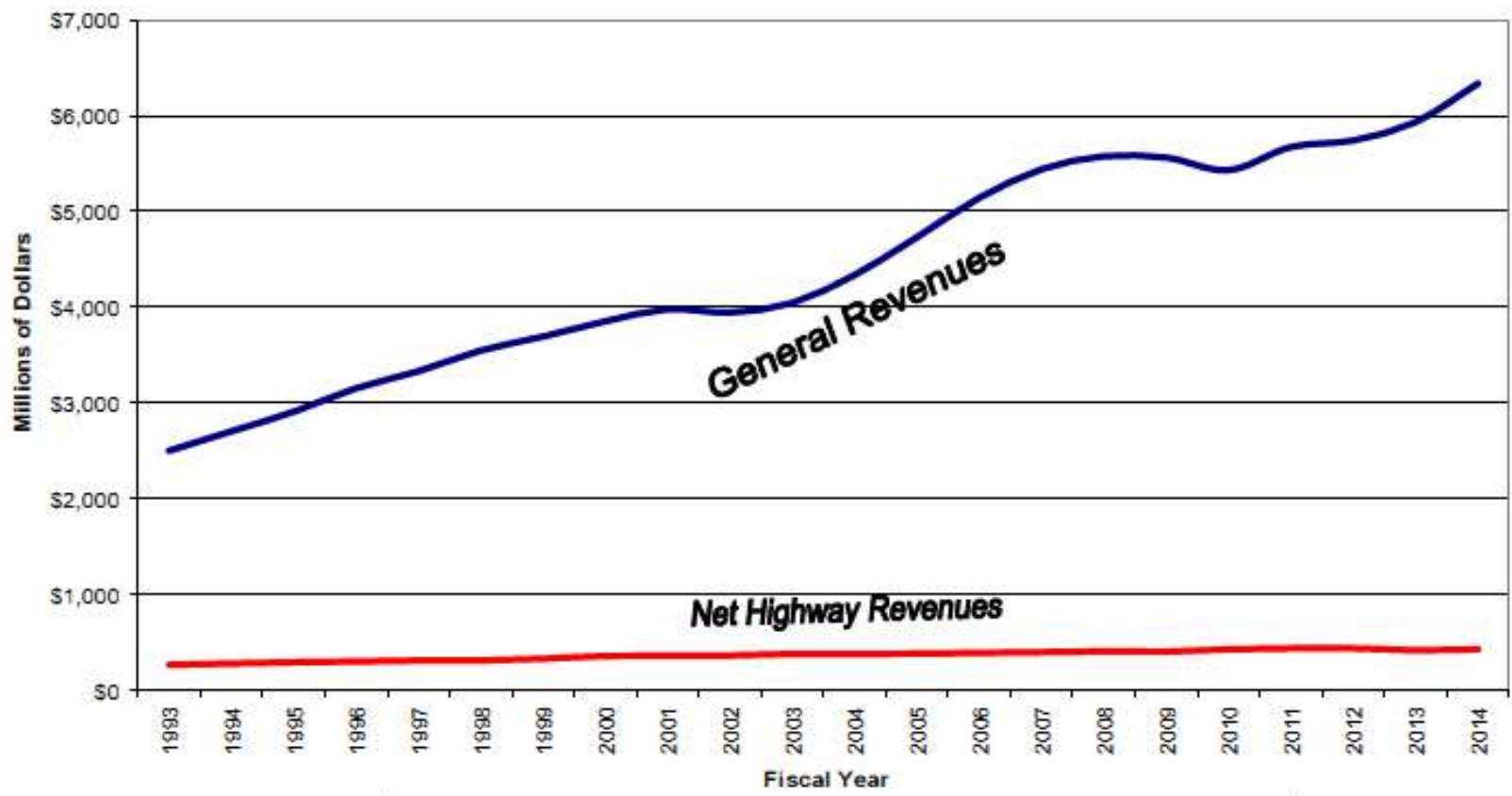
# Arkansas Travel Trends

2007-2014

	2007	2014	Difference
Gas & diesel Consumption	2.095 billion	1.980 billion	 115 million
Gas & diesel Revenue	\$454 million	\$392 million	 \$62 million
Miles Traveled	32.4 billion	33.8 billion	 1.4 billion



# State General Revenue vs. AHTD Net Highway Revenue



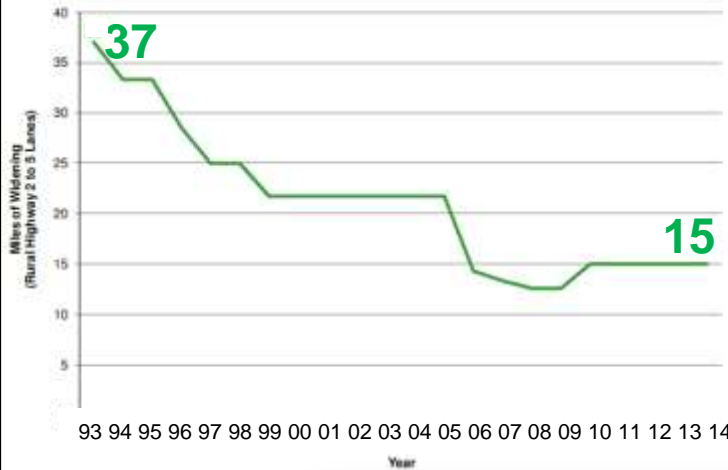
General Revenue

Net Highway Revenue

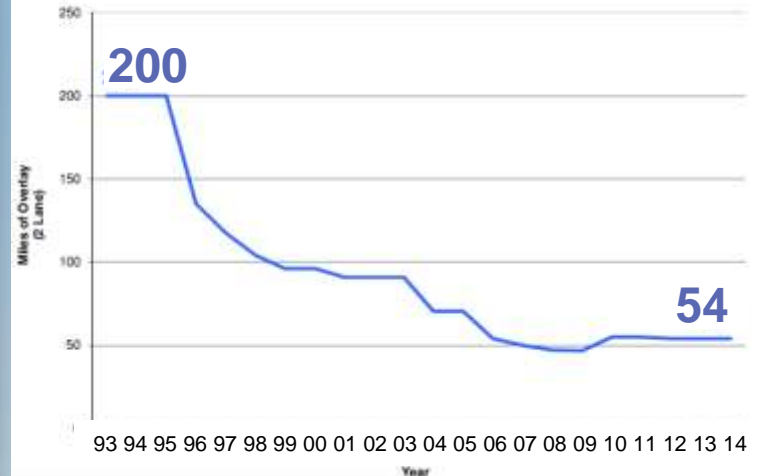


# Challenges

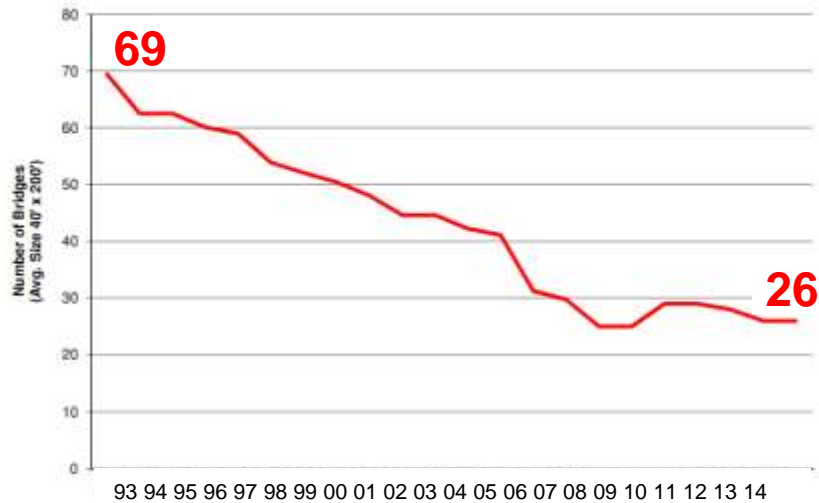
\$100,000,000 Widening Program



\$10,000,000 Overlay Program

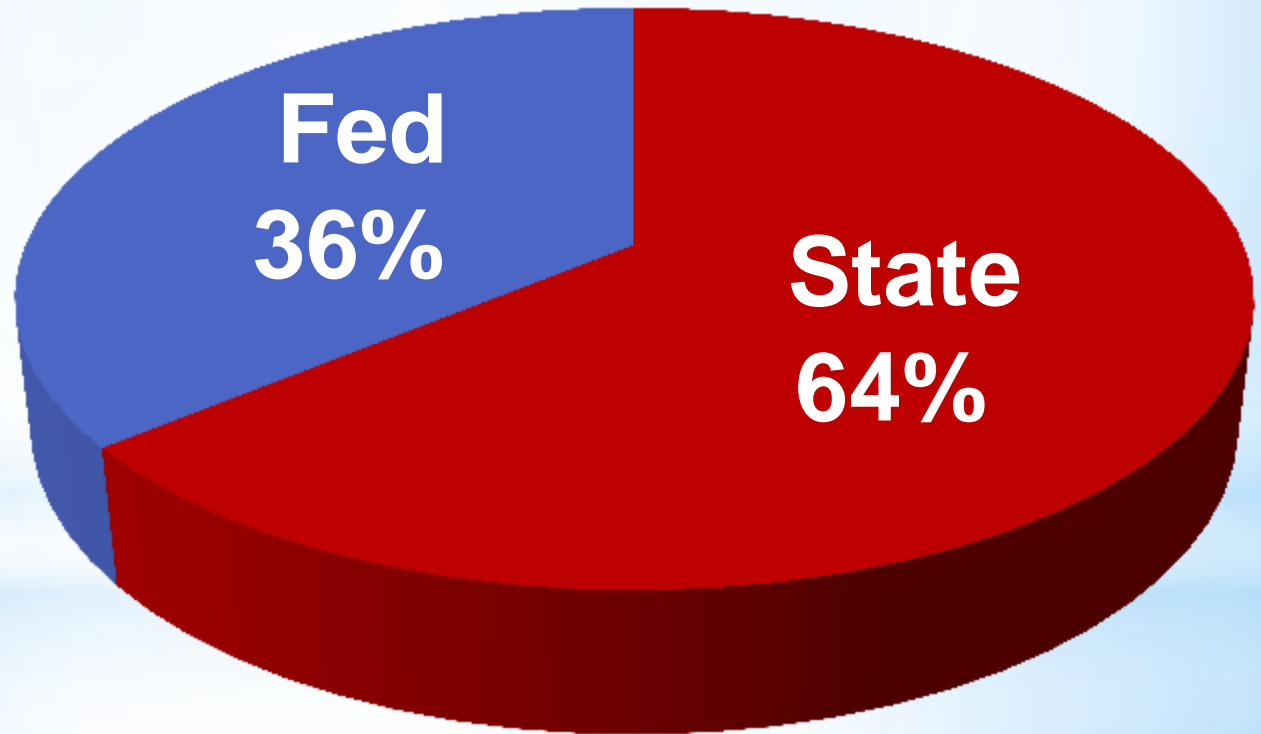


\$25,000,000 Bridge Program



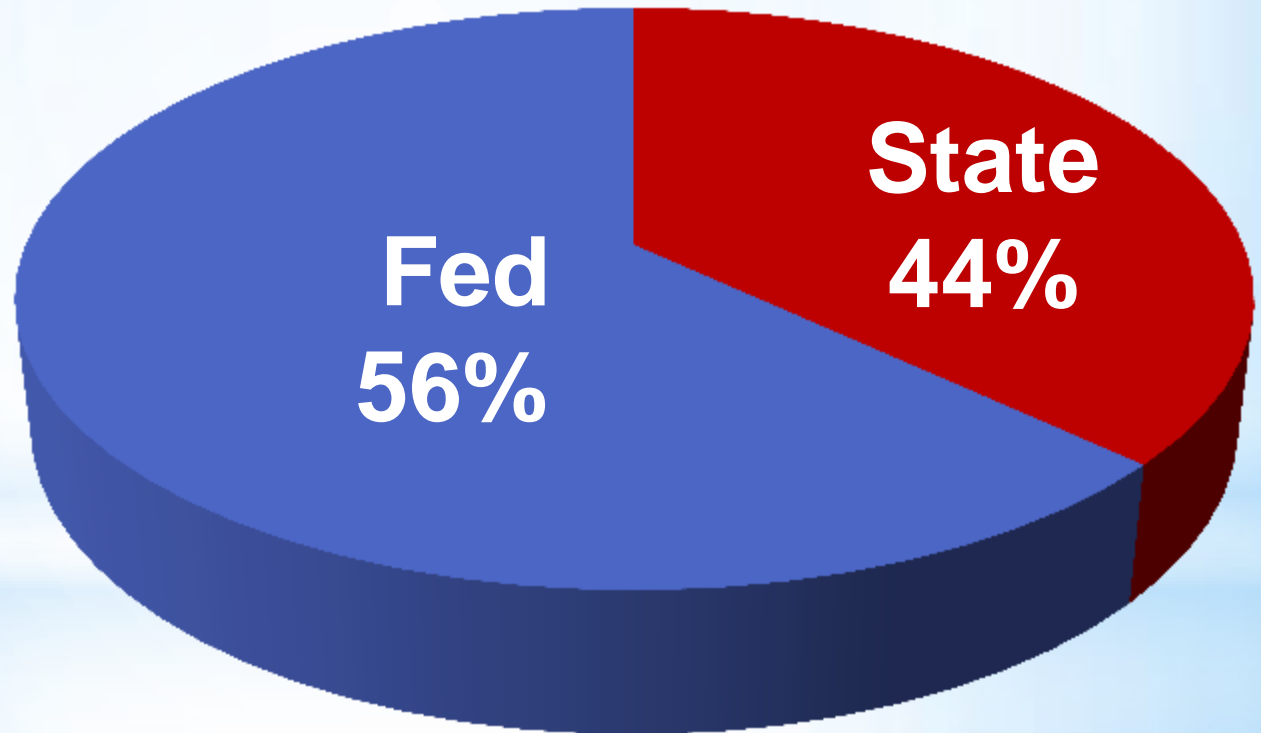
# 1993

## Hwy. Funding Breakdown

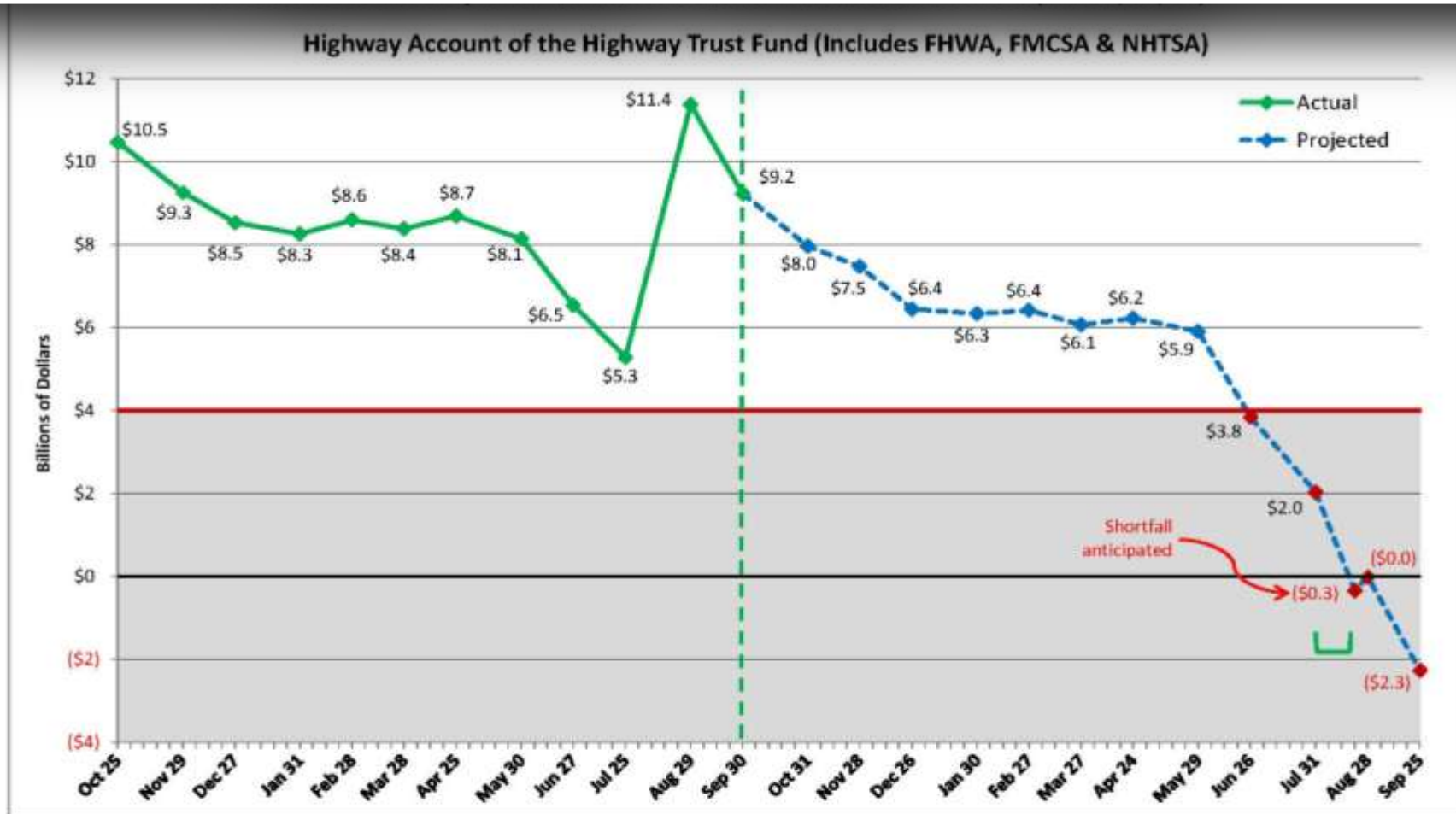


# 2014

## Hwy. Funding Breakdown



# HIGHWAY TRUST FUND



1/ Graph reflects actual data through 9/30/14 and end-of-month projections for FY 2015.

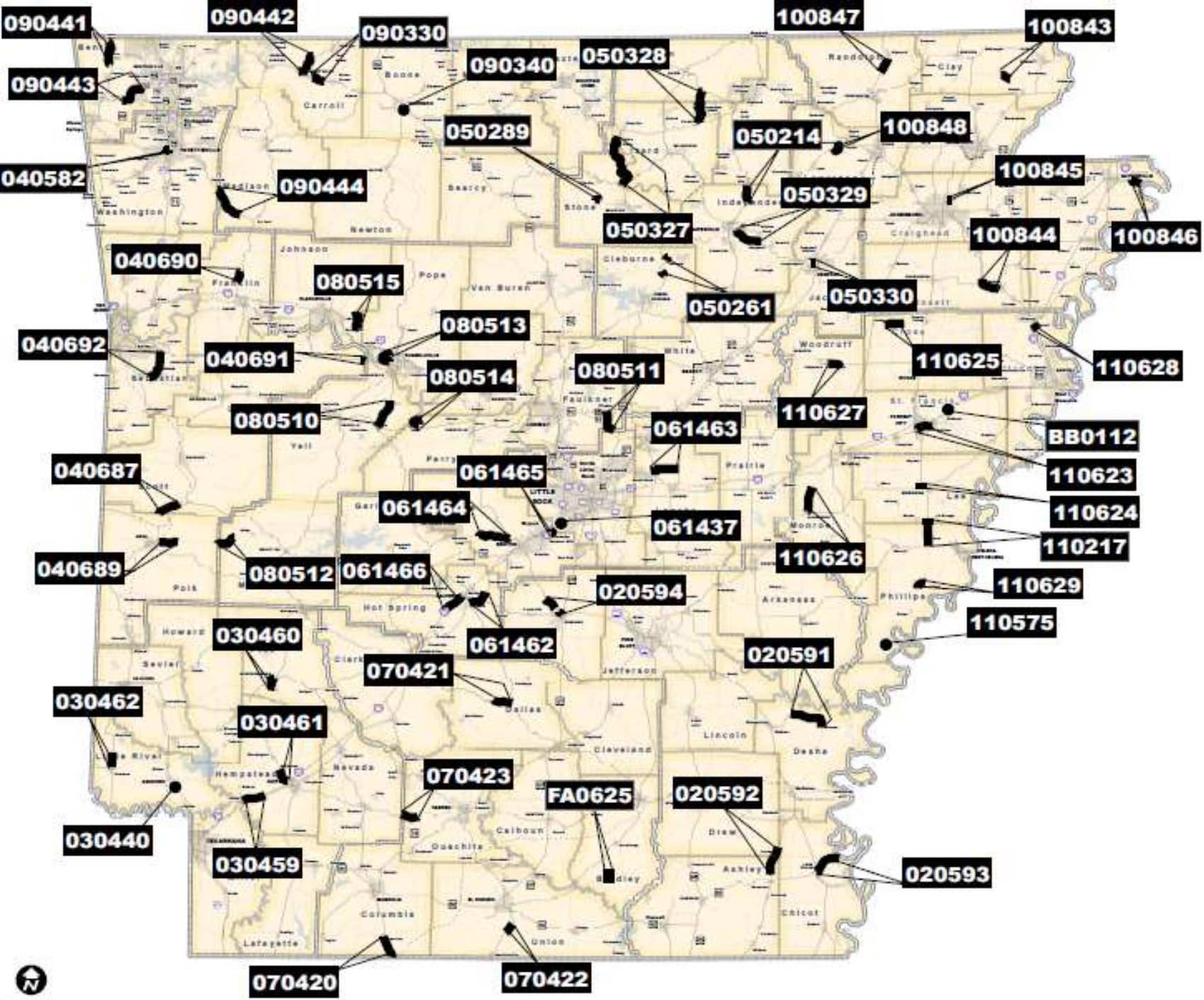
2/ Total receipt and outlay projections are based on FY 2015 Mid-Session Review assumptions. Projected monthly receipt and outlay rates are based on historic averages.

3/ Range of anticipated shortfall: Green brackets denote the estimated window of when the anticipated shortfall will occur.

4/ The shaded area represents when the Highway Account balance drops below \$4 billion, at which point cash management procedures may become necessary.

Source: FHWA

# 2015 Projects Removed



March 13, 2018





# *Ramifications*

- **Projects pulled**
- **Highway system deterioration**
- **Lost economic development**
- **Lost jobs**
- **Compromised safety**
- **Higher operating costs**

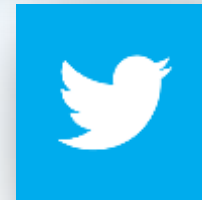




# The Bottom Line

- **Highway funding system is flawed**
- **Spending inconsistent with expectations**
- **Infrastructure must be a higher priority**





**@AHTD**

**Litter Hotline 866-811-1222**

