

Scott E. Bennett, PE
Director of Highways and Transportation



ARKANSAS STATE HIGHWAY AND TRANSPORTATION DEPARTMENT

Little Rock
Engineers Club
March 7, 2016



History



Prior to 1913

“We are always yapping about the ‘Good Old Days’ and how we look away back and enjoy it, but I tell you there is a lot of hooley to it.”

– Will Rogers





The Teens

- **1913 - First Arkansas Highway Commission Created**
- **No Highway Department / No Highway System**
- **First Highway Improvement Fund**
- **\$10 Registration Fee / Vehicle - \$72,000 Total Budget**
- **50,000 Vehicles**
- **36,000 Miles of Public Roads**

Highway 71 near Bella Vista



The Twenties



Repair Shop of State Highway Department
Little Rock, early 1930s

- **First Gas Tax – 1 cent per gallon**
- **Arkansas Highway Commission Changed Twice**
- **1927 - All Road Improvement District miles and \$100 Million in Debt Transferred to State**



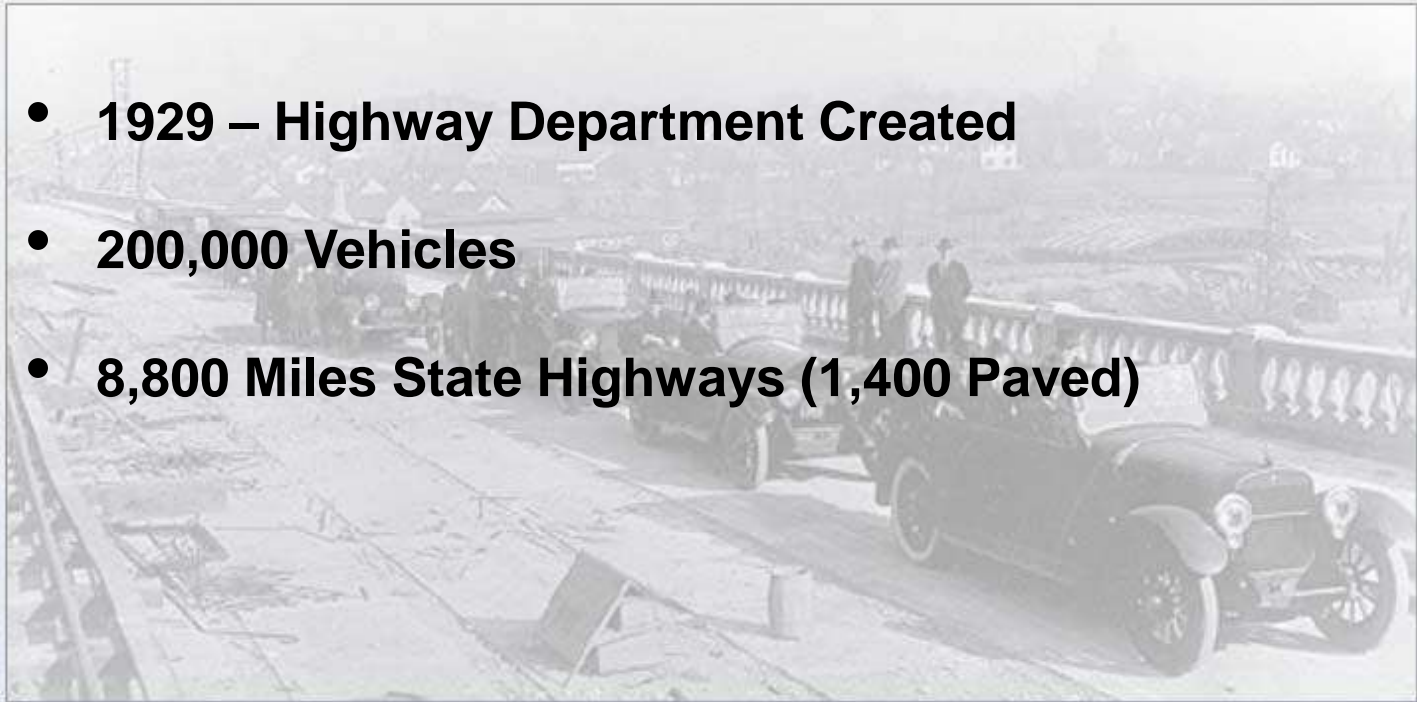
Highway Districts 1923



Highway Districts 1925



- **1929 – Highway Department Created**
- **200,000 Vehicles**
- **8,800 Miles State Highways (1,400 Paved)**



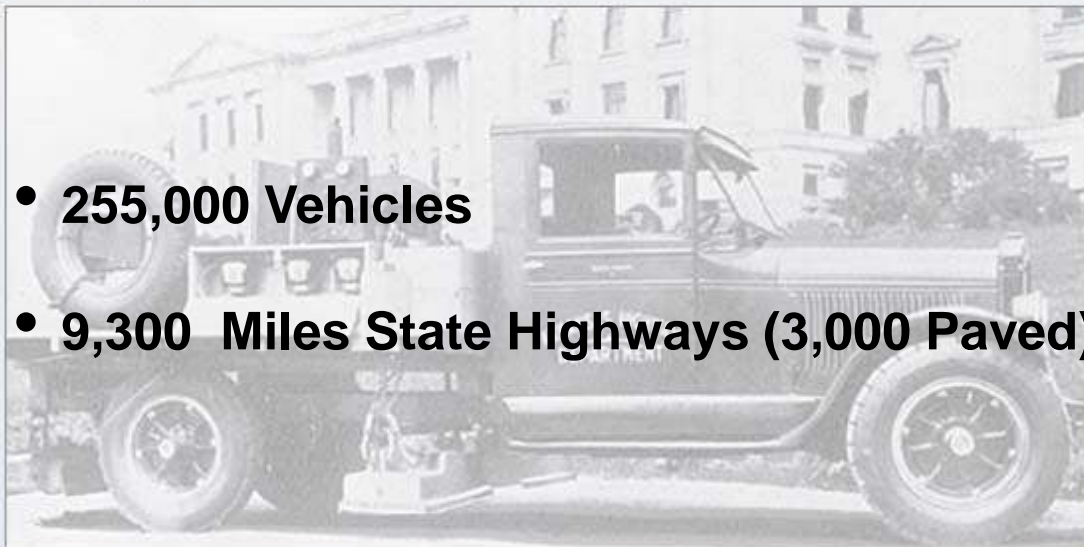
Broadway Bridge dedication,
1922. View is looking towards
North Little Rock



The Thirties



Magnet Truck, Picked up an average of 20 lbs of metal per mile

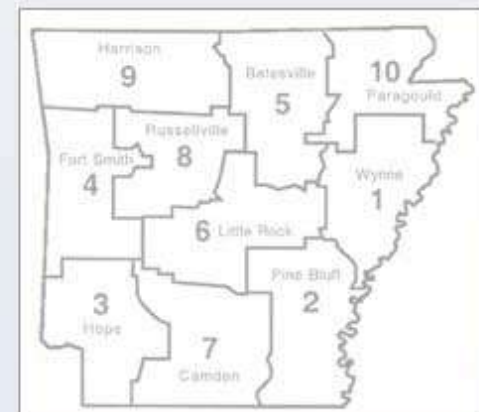


- **255,000 Vehicles**
- **9,300 Miles State Highways (3,000 Paved)**



- **Arkansas Highway Commission Changed Two More Times**
- **Gas Tax Raised to 6.5 cents per Gallon**
 - ✓ **1960's Before Next Increase**

State Highway Department HQ, 1939



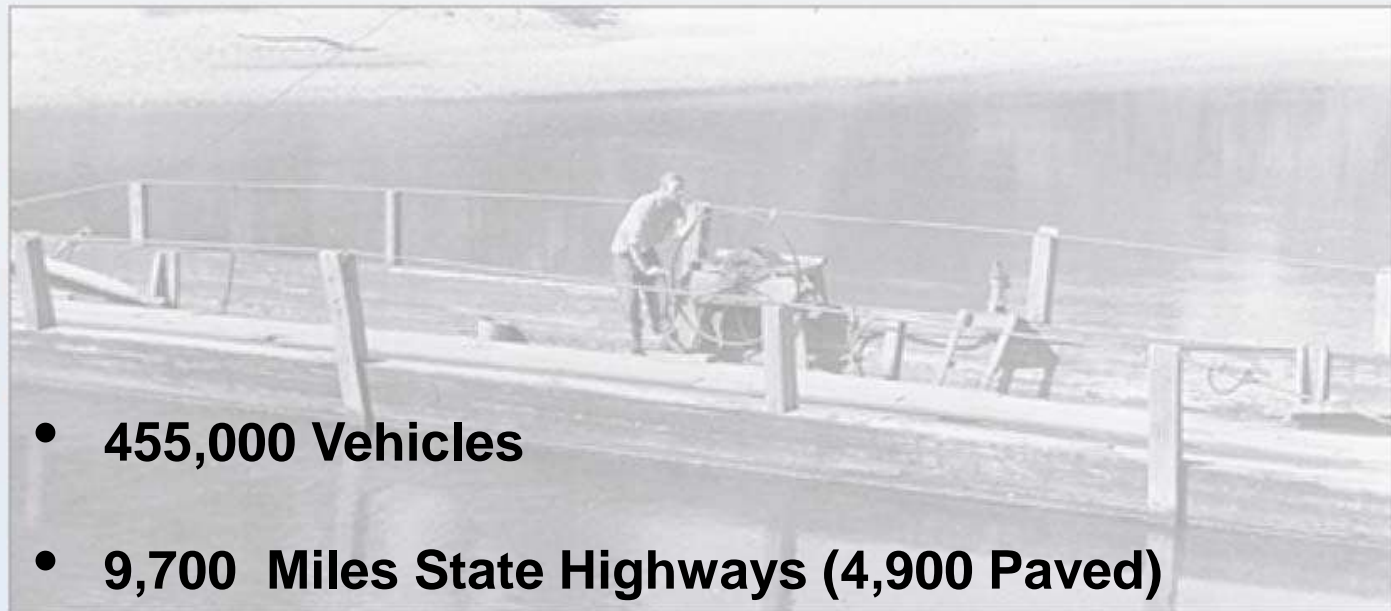


The Forties

- **World War II**
- **Arkansas Highway Commission Changed Two More Times**
- **Political Influence on Highways – Growing Discontent**

Operation of the Henderson Ferry at Norfolk Lake cost \$117,981 for 1947-48. During this period 189,856 vehicles were ferried over at an average cost of 62¢ per vehicle.

Dillard's Ferry, a hand-cranked operation, crossed the Buffalo River at Highway 14 from 1929-1958.



- **455,000 Vehicles**
- **9,700 Miles State Highways (4,900 Paved)**



The Fifties



- New Governor Elected – Promise to Improve Roads
- 1951 - Highway Audit Commission Report

✓ *“the advice, counsel and expert know-how which is available from the Department’s own technical and administrative staffs bear scant weight indeed when they are in conflict with the political pressures and political promises of the moment.”*

- Arkansas Highway Commission
 - ✓ 9 Legislative Acts Restructuring Commission since 1913
- 1952 – Mack Blackwell Amendment
- Interstate Era
- 750,000 Vehicles
- 11,000 Miles State Highways (8,800 Paved)

Widening Hwy 67 near Malvern, 1956





The Sixties

- **Legislature**

- ✓ **Allowed Counties to Transfer County Roads to the Department as State Highways**
- ✓ **Increase of 3,400 miles**

Highway 144, South of Lake Village

- **New Highway Department Headquarters – Current Location**

Highway Department Complex at I-30 / Hwy 338, late 1960s

- **Arkansas – National Forefront in Interstate Construction/Completion**

Weights & Standards Division, AHD

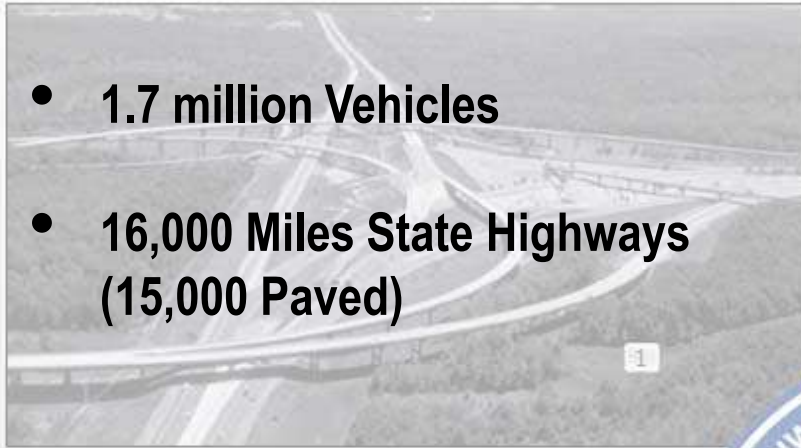
- **1.1 million Vehicles**
- **14,500 Miles State Highways (13,000 Paved)**

North Terminal Interchange, 1962



The Seventies

- 1.7 million Vehicles
- 16,000 Miles State Highways (15,000 Paved)



South Terminal Interchange

- Debt Free

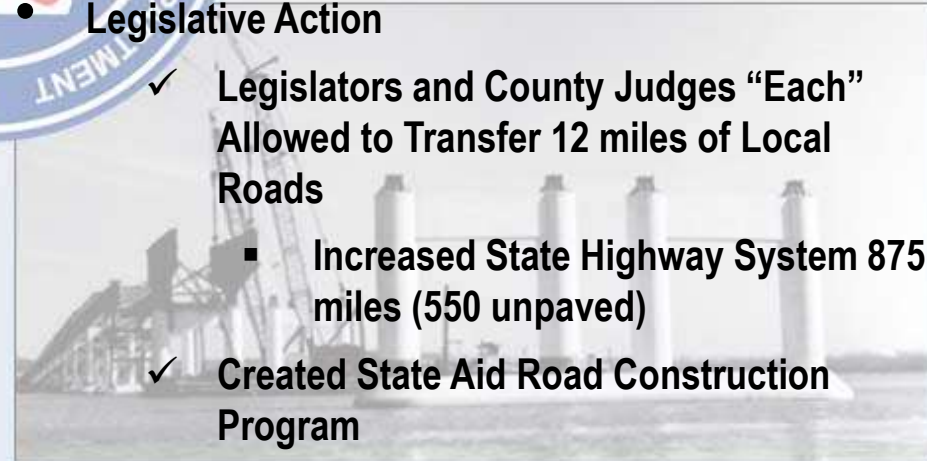


AHC Lawrence Blackwell burning bonds at a ceremony in 1975.



- Legislative Action

- ✓ Legislators and County Judges “Each” Allowed to Transfer 12 miles of Local Roads
 - Increased State Highway System 875 miles (550 unpaved)
- ✓ Created State Aid Road Construction Program



I-430 River Bridge, 1973

- Arkansas Department of Highways renamed Arkansas Highway and Transportation Department – Expanded Authority



Toad Suck Ferry on Arkansas River at Highway 60, 1970



The Eighties

- 16,200 Miles State Highways (15,900 Paved)
- 2.0 million Vehicles



East-West Arterial linking Hwy 270 W and Hwy 70 W in Hot Springs.



- 1985 - Rural Road Program

Snow and ice removal costs reached \$4 M, 1984



- Transportation Safety Agency Transferred to AHTD

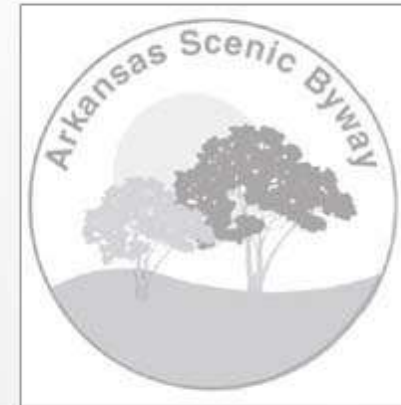
Transportation Safety Agency, 1989



The Nineties

- **1991 – Highway Improvement Program**
- **1993 – Federal Gas Tax**
 - ✓ Gas Tax - 18.4 cents per gallon
 - ✓ Diesel Tax – 24.4 cents per gallon
 - ✓ Has Not Changed Since 1993
- **1999 – State Gas Tax**
 - ✓ Gas Tax Raised 3 cents per gallon to 21.5 cents
 - ✓ Diesel Tax Raised 4 cents per gallon to 22.5 cents
- **1999 – Interstate Rehabilitation Program**

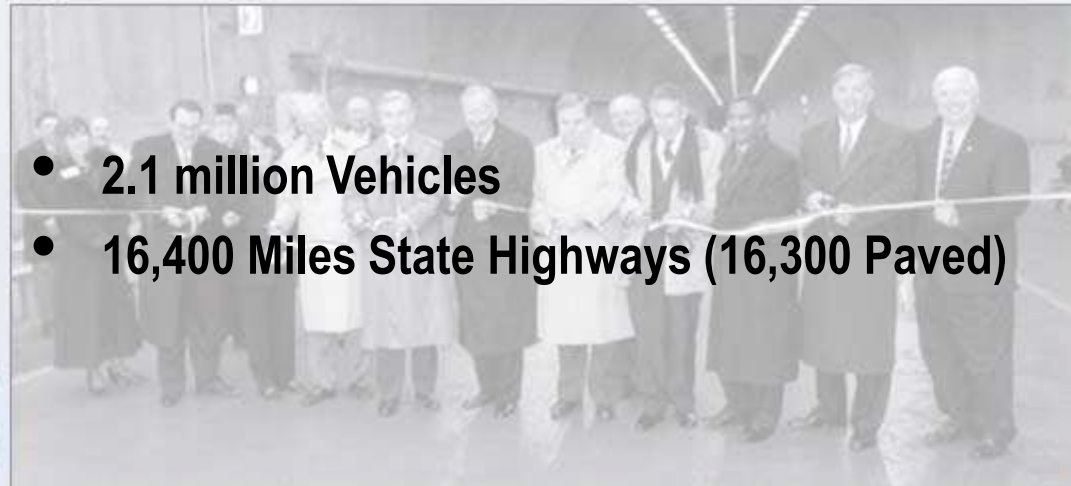
1991 Highway Improvement Program planned to improve or replace approximately 560 bridges.



Section of Hwy 7
named first Scenic
Byway of Arkansas.

- **2.1 million Vehicles**
- **16,400 Miles State Highways (16,300 Paved)**

Dedication of I-540 and Bobby
Hopper Tunnel, 1999





The New Millennium

- 2011 – 2nd Interstate Rehabilitation Program
- 2012 – Connecting Arkansas Program



Winter Weather in Dec 2000 and Jan 2001 cost almost \$40 M.



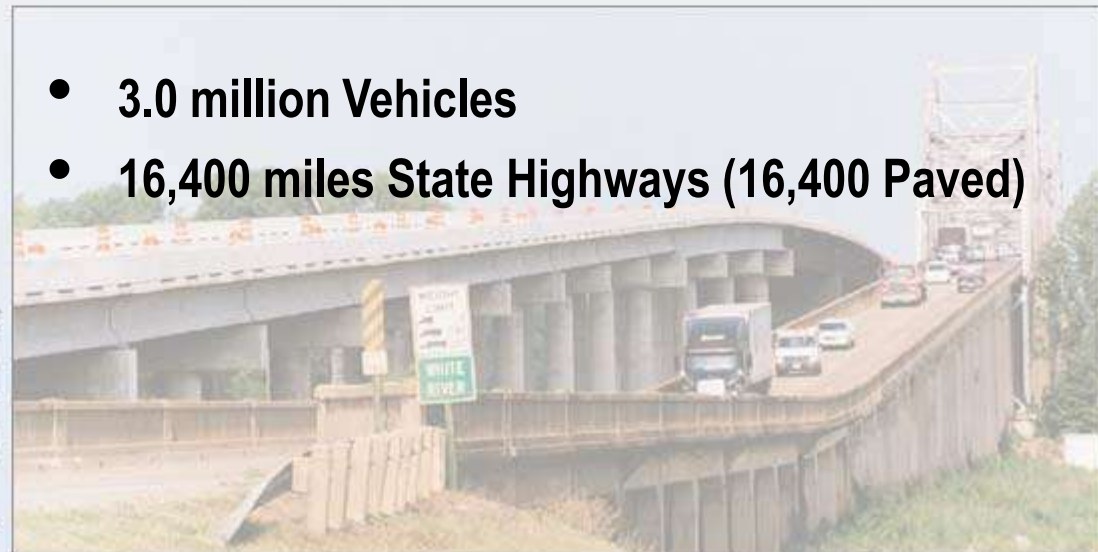
- Governor's Working Group on Highway Funding

Governor's Working Group



New White River Bridge on Hwy 64 at Augusta opened in 2001.

- 3.0 million Vehicles
- 16,400 miles State Highways (16,400 Paved)





Legislation & Funding

Fixing America's Surface Transportation (FAST) Act

- Authorizes 5 Years of Funding
 - Federal Fiscal Years (FFYs) 2016-2020
- \$225.2 Billion for Highway Investment
- Over 5 Years:
 - \$20.2 Billion Increase from FFY 2015
 - \$250 Million Increase for Arkansas





Funding Challenges

- **Additional State Highway Funds Needed to Match Federal Highway Funds**
 - ✓ Typically 80% Federal 20% State Funds
 - ✓ Use or Lose

STATE FISCAL YEARS 2016-2020

ESTIMATED STATE HIGHWAY REVENUE ANALYSIS

x \$1,000,000

	2016	2017	2018	2019	2020	AVG
Sources and Revenues:						
Motor Fuels and Registration Fees	\$ 356.4	\$ 358.2	\$ 360.0	\$ 361.8	\$ 363.6	
4¢ Diesel Tax - Committed to the Interstate Rehab. Program (IRP)	\$ 16.5	\$ 16.5	\$ 16.5	\$ 16.5	\$ 16.5	
Natural Gas Severance Tax	\$ 29.0	\$ 29.7	\$ 30.4	\$ 31.2	\$ 32.0	
TOTAL	\$ 401.9	\$ 404.4	\$ 406.9	\$ 409.5	\$ 412.1	\$ 407.0
Less Fixed Expenditures:						
Maintenance	\$ 221.8	\$ 222.9	\$ 224.0	\$ 225.1	\$ 226.3	
Administration	\$ 21.8	\$ 21.9	\$ 22.0	\$ 22.1	\$ 22.2	
Operations	\$ 26.2	\$ 26.4	\$ 26.5	\$ 26.6	\$ 26.8	
Budgeted Construction w/o Right of Way	\$ 44.9	\$ 45.1	\$ 45.4	\$ 45.6	\$ 45.8	
IRP Debt Service	\$ 16.5	\$ 16.5	\$ 16.5	\$ 16.5	\$ 16.5	
TOTAL	\$ 331.3	\$ 332.8	\$ 334.4	\$ 336.0	\$ 337.6	\$ 334.5
Total State Highway Funds Available for Highway Construction Program	\$ 70.6	\$ 71.6	\$ 72.5	\$ 73.5	\$ 74.5	\$ 72.5
Less Required State Highway Matching Funds for Federal Highway Funds	\$ 116.7	\$ 119.4	\$ 121.9	\$ 124.8	\$ 127.8	\$ 122.1
Shortfall in State Highway Matching Funds Needed for Federal Highway Funds	(\$ 46.1)	(\$ 47.8)	(\$ 49.4)	(\$ 51.3)	(\$ 53.3)	(\$49.6)





Funding Challenges

- **Additional State Highway Funds Needed to Match Federal Highway Funds**

- ✓ Typically 80% Federal Hwy. Funds are Matched by 20% State Hwy. Funds
- ✓ Use or Lose

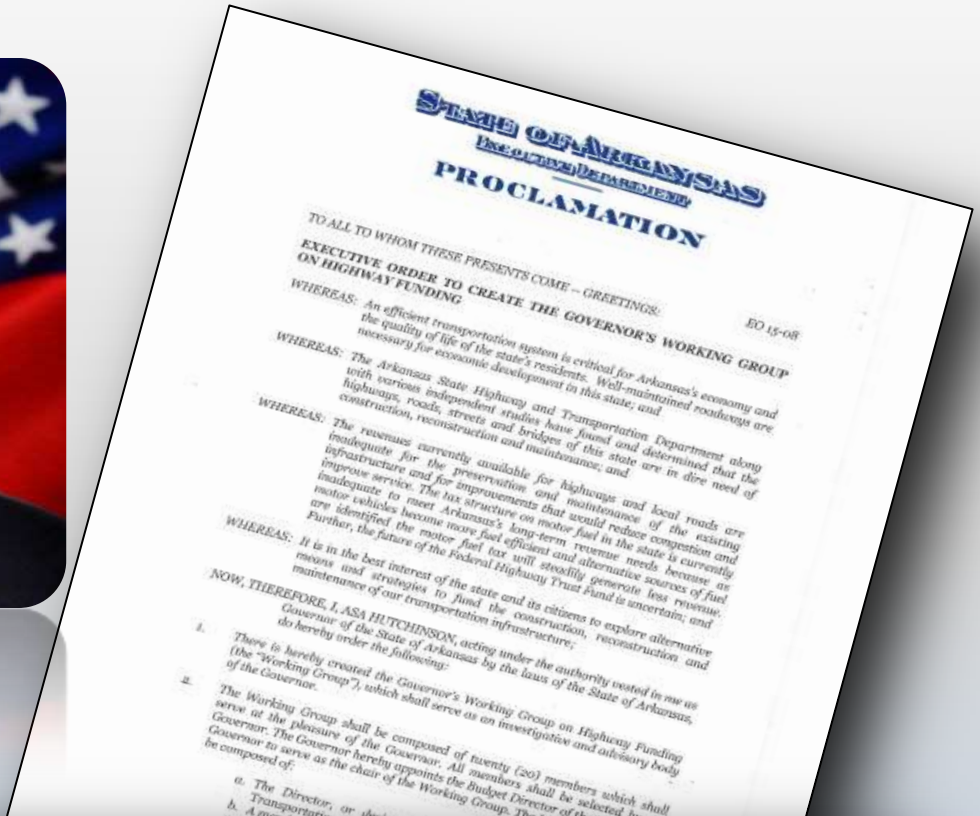
- **Reduction in Annual State Highway Revenue Available to Match Federal Highway Funds**

- ✓ Arkansas State Aid City Street Program - \$ 14 M
- ✓ Increased Maintenance Budget - \$ 18 M
- ✓ Declining Natural Gas Severance Tax Revenue - \$ 20 M

Total Annual Reduction - \$ 52 M



Governor's Working Group on Highway Funding



“An efficient transportation system is critical for Arkansas’ economy and the quality of life of the state’s residents.”



Governor's Working Group on Highway Funding

GOALS

Needs	Net to AHTD (x \$1 M)	Cumulative Amount (x \$1 M)	Benefits
Immediate/Short-Term (within 2 years)	\$110	\$110	<ul style="list-style-type: none"> • Critical Needs • Match Federal Highway Funds • Overlays
Mid-Term (within 3-5 years)	\$140	\$250	<ul style="list-style-type: none"> • Enhanced Maintenance Program <ul style="list-style-type: none"> ✓ Pavement Restoration of 50% of the State Highway System every 15-20 years
Long-Term (within 6-10 years)	\$150	\$400	<ul style="list-style-type: none"> • Enhanced Economic Development Program

Ultimate (10+ Years)	\$1.68 Billion	<ul style="list-style-type: none"> • Economic Development Projects Completed <ul style="list-style-type: none"> ✓ I-49, I-69 ✓ Four-lane Grid System ✓ State of Good Repair for Bridges and Pavement ✓ AHTD Equipment Fleet – Average Age 8 Years ✓ All AHTD Facilities Modernized
----------------------	----------------	---



Governor's Working Group on Highway Funding

GOVERNOR'S WORKING GROUP ON HIGHWAY FUNDING

Short-Term Recommendation



December 15, 2015

Presented to:
The Honorable Asa Hutchinson, Governor

Compiled and drafted by:
Chairman Duncan Baird, State Budget Administration
Tori B. Gordon, Policy Advisor, Office of Governor Asa Hutchinson





Governor's Working Group on Highway Funding

January 19, 2016
Press Conference





Highway Funding Option Presented by Governor Hutchinson 2016 Special Session

Item	Source	2017 (x \$1M)	2018 (x \$1M)	2019 (x \$1M)	2020 (x \$1M)	2021 (x \$1M)
Transfer 2015 Unobligated Funds	Surplus	\$20.0				
Transfer from Governor	Rainy Day Fund	\$20.0				
Transfer Sales Tax New & Used Vehicles	General Revenue	\$ 1.5	\$ 8.0	\$15.0	\$20.0	\$25.0
Redirect Diesel Tax	General Revenue		\$ 2.7	\$ 2.7	\$ 2.7	\$ 2.7
Eliminate Deduction - Temporary ½ cent Sales Tax	State Central Services	\$ 5.4	\$ 5.4	\$ 5.4	\$ 5.4	\$ 5.4
Total		\$46.9	\$16.1	\$23.1	\$28.1	\$33.1

Estimate based on 10-Year Average

Allocate 25% of General Improvement Funding	Surplus		\$48.0	\$48.0	\$48.0	\$48.0
Total		\$46.9	\$64.1	\$71.1	\$76.1	\$81.1



Funding Challenges

GOVERNOR'S PROPOSAL



SPECIAL SESSION





Funding Challenges

“Arkansas Works”

- Governor's health care reform
 - Special Session--April 6
 - Fiscal Session--April 13





Project Update



30 Crossing



- Design-Build Project
- Convergence of Six Major Interstates/Freeways:

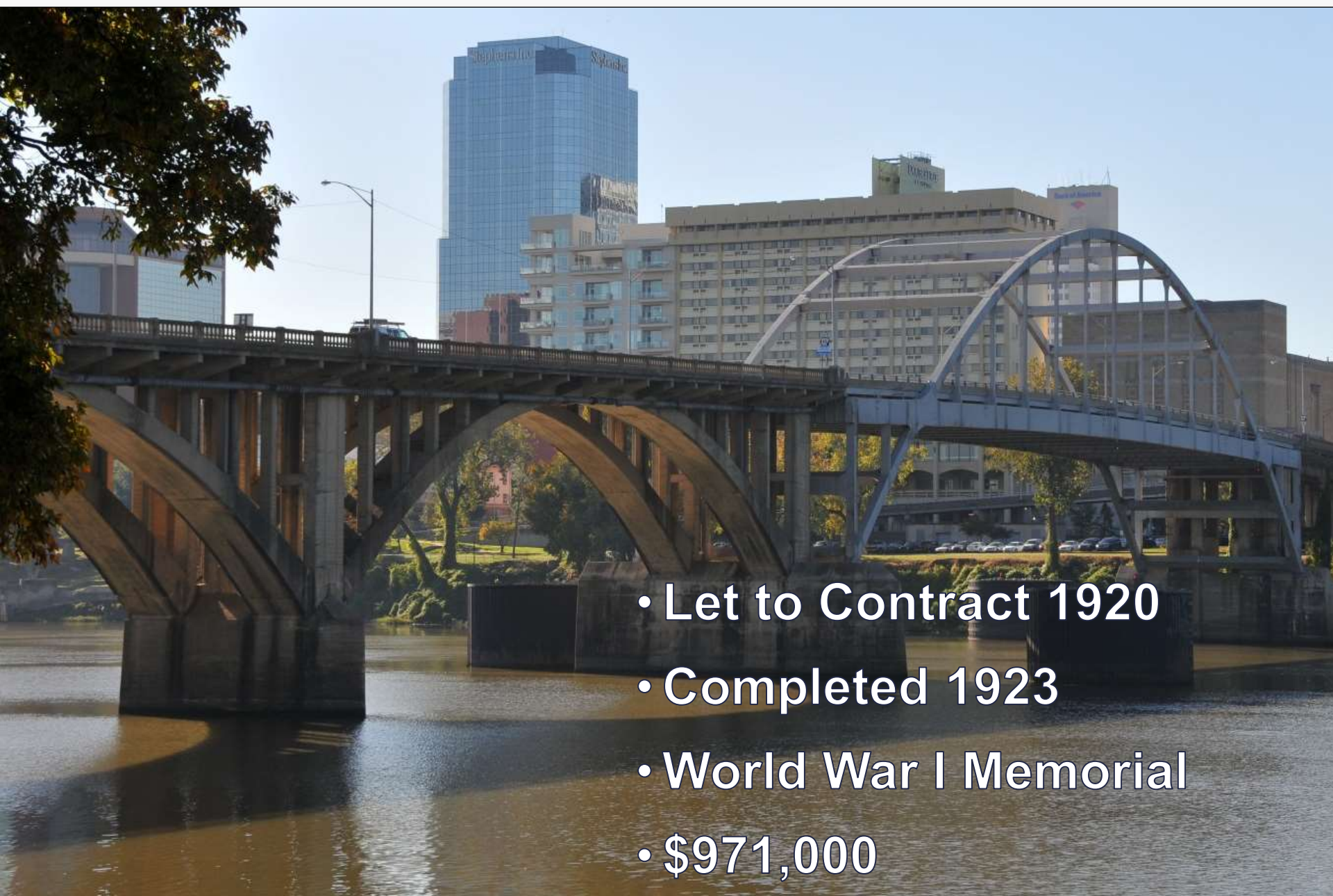
I-30 I-530 I-440
I-630 I-40 Hwy. 67

- Major Components
 - Ark River Bridge Replacement
 - Capacity Improvements
 - Interchange Improvements
 - Ramp Modifications





Broadway Bridge



- Let to Contract 1920
- Completed 1923
- World War I Memorial
- \$971,000



Broadway Bridge



- Let to Contract September 2014
- Work Began January 2015
- \$98.4 Million





I-30 / I-430 Interchange



• Phase I

- ✓ Let to Contract July 2014
- ✓ Completed April 2015
- ✓ \$13.4 Million
- ✓ New Ramp Construction
- ✓ I-30 Frontage Road Widening

• Phase II

- ✓ Let to Contract December 2015
- ✓ Anticipated Complete October 2016
- ✓ \$24.4 Million
- ✓ I-430 Widening
- ✓ I-430 Exit Ramp Widening
- ✓ New Ramp Construction
- ✓ I-30 Frontage Road Widening





State Highway 10

- Taylor Loop to Pleasant Valley Drive
- Improved Access to Interstate 430
- Capacity Improvements / Congestion Relief
- Draft Statewide Transportation Improvement Program
Federal Fiscal Years 2016-2019
- \$58.3 Million
- 2019





U.S. Highway 70



- Widen to 5 Lanes
- 19 miles
- \$86 Million
- Estimated Letting Date: Late 2016





Interstate Rehabilitation Program

Under Construction:
1 Project
3 miles
\$34 million

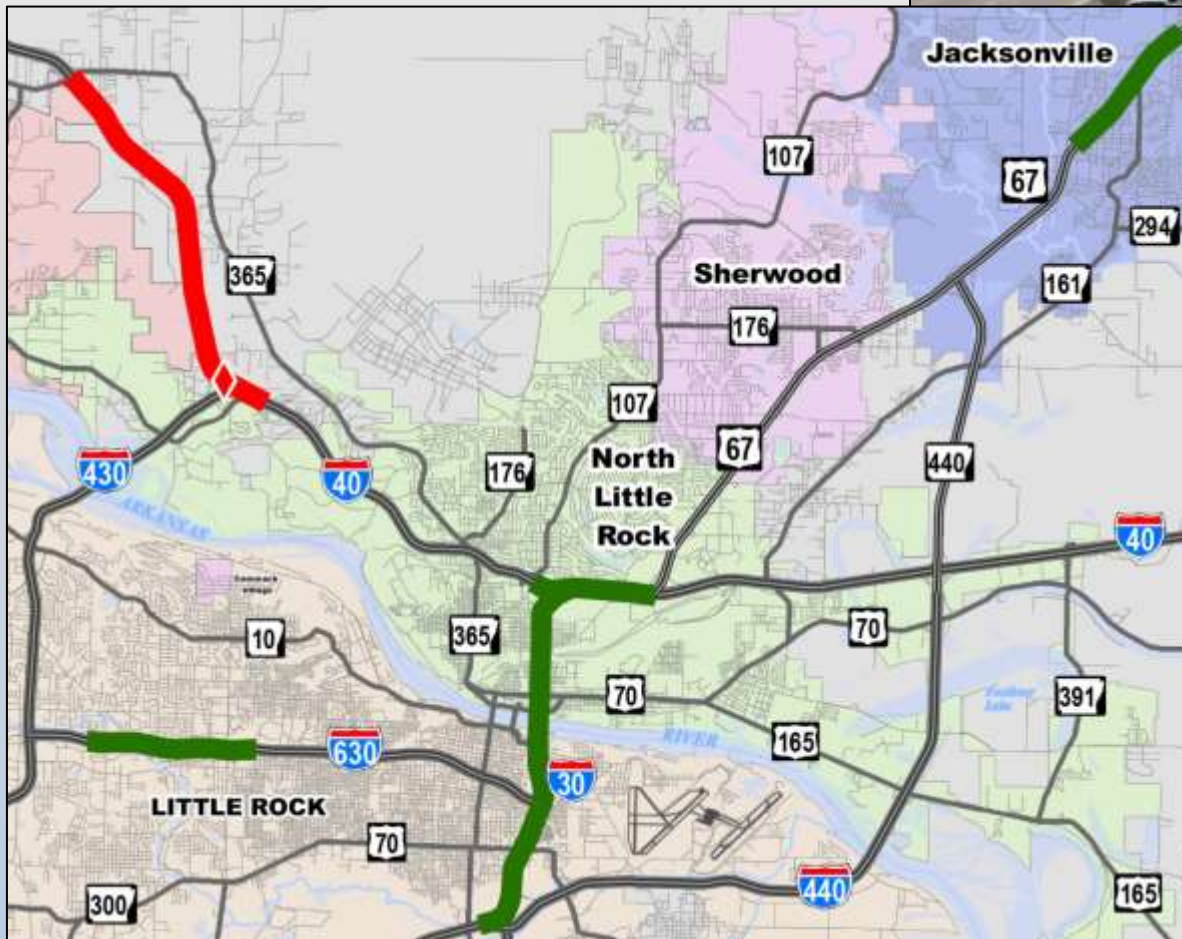
Scheduled:
4 Projects
6 miles
\$66 million





Connecting Arkansas Program

Under Construction:
1 Project
5 miles
\$38 million



Scheduled:
4 Projects
17 miles
\$423 million



Opportunities and Changes



2016 Request for Proposals

- **Design Build Finance**
- **On Call**
 - ✓ **Design Services**
 - ✓ **Right of Way Services**
 - ✓ **Cultural Resource Services
(Archaeology)**
 - ✓ **Planning Services**





Utilities in AHTD Right of Way

- Small, Rural Water Associations
- Small City Utilities
- Utilities Located in Department Right-of-Way
- Financially Unable to Relocate Utilities
 - ✓ County or City Partnership
 - Transfer Maintenance Ownership of State Highways to County or City
 - ✓ Department Loan – No Interest



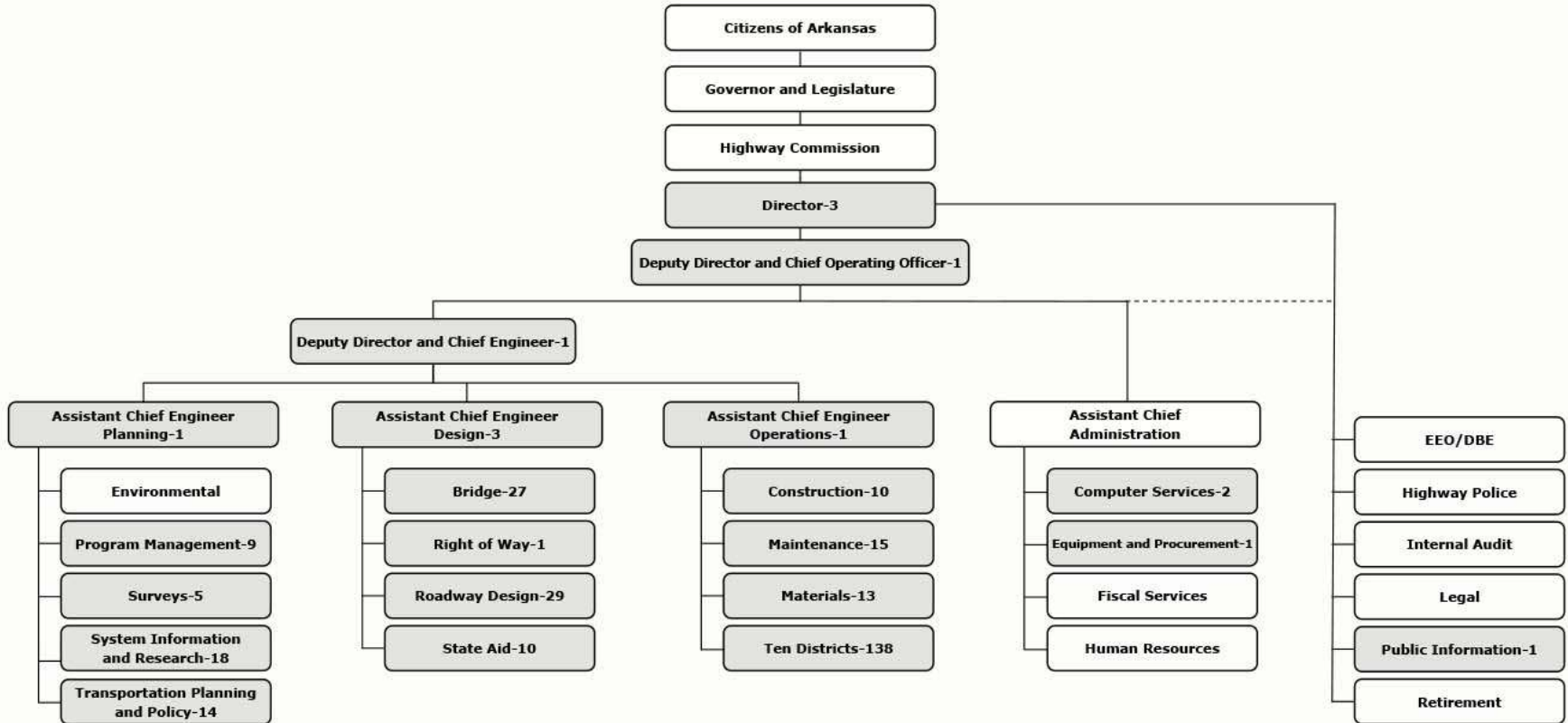


Engineers at the Department



Engineer Staff

ARKANSAS STATE HIGHWAY AND TRANSPORTATION DEPARTMENT ORGANIZATION CHART



**DISTRIBUTION OF AHTD ENGINEERS
AS OF 1-28-16
303**

Director of Highways and Transportation

March 13, 2015

Date



Improving Arkansas' Roads

What's the role of an Engineer?

Planning



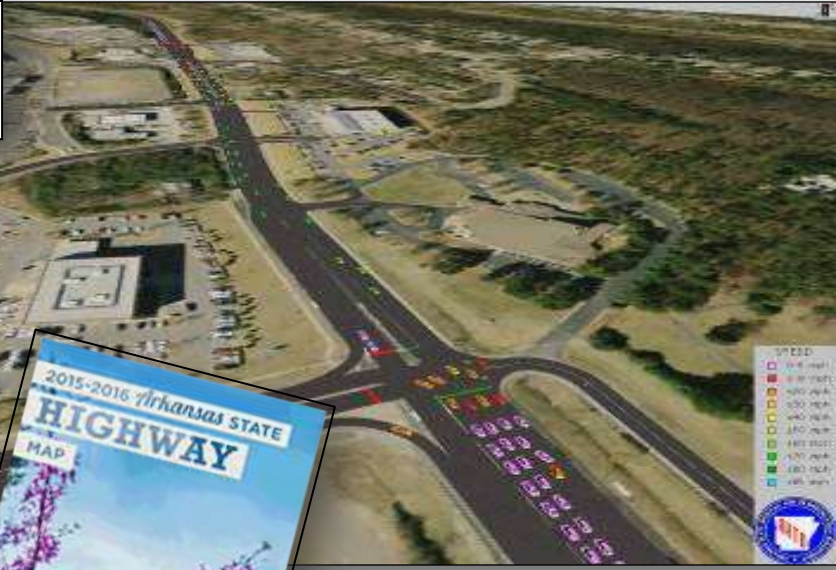
Design



Operations

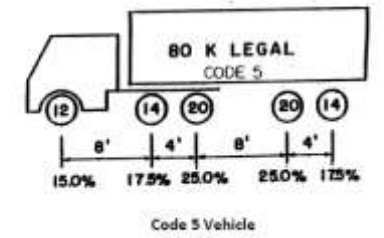
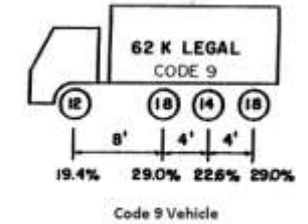
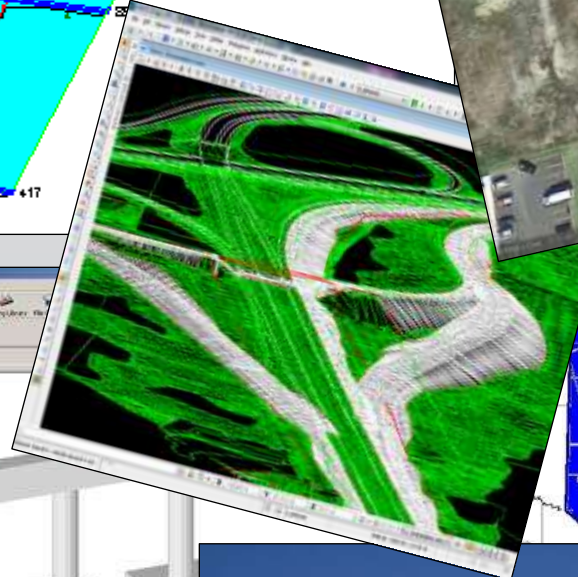
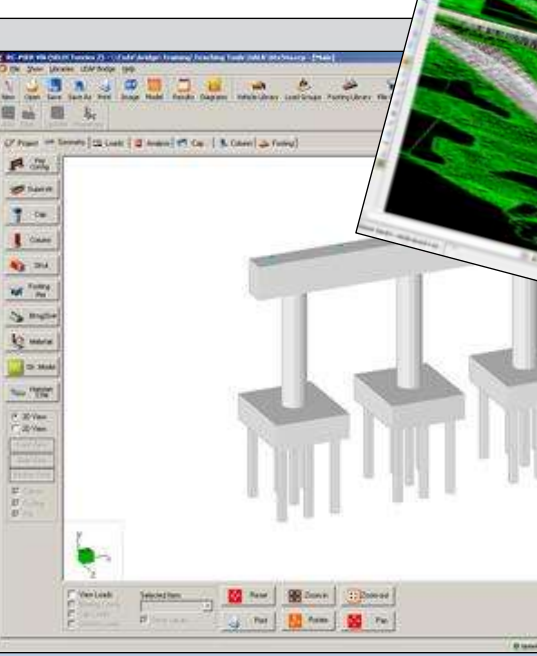
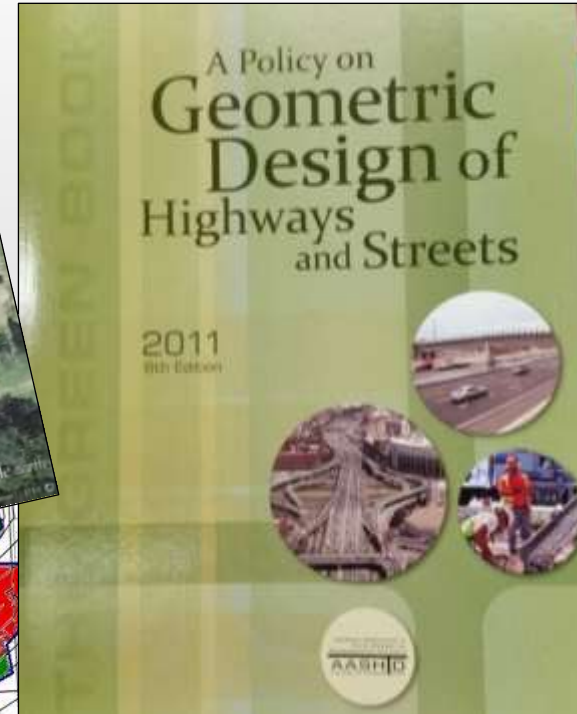
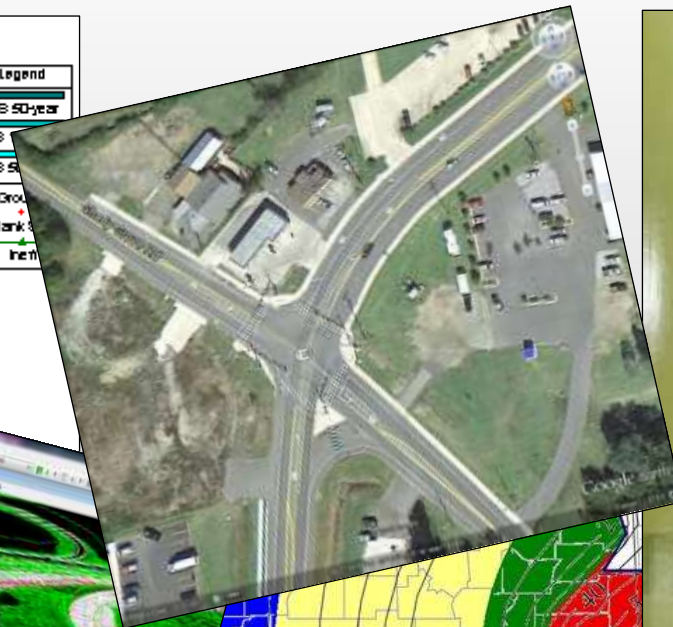
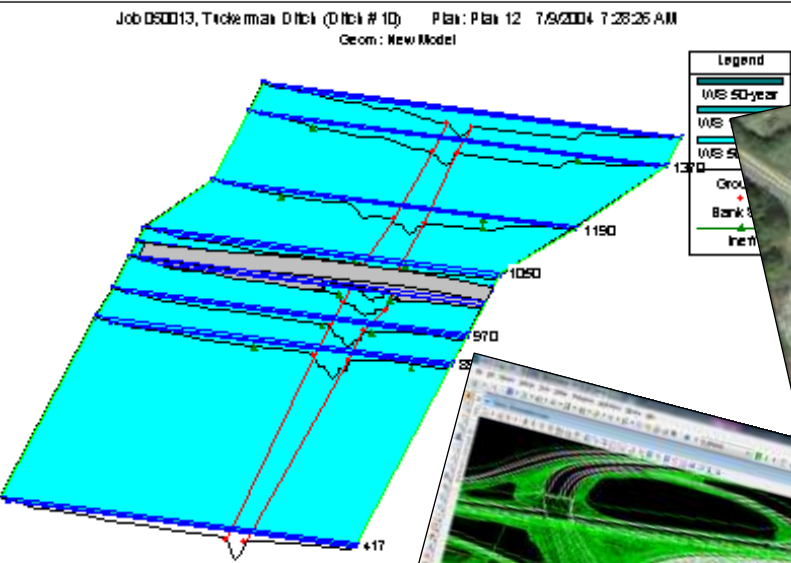


Planning Engineer





Design Engineer





Operations Engineer





- ArkansasHighways.com
- ConnectingArkansasProgram.com
- Vimeo.com/AHTD
- IDriveArkansas.com
- [Twitter.com @AHTD](https://twitter.com/AHTD)



@AHTD





Questions?