

**Chad Adams**  
**District Engineer**  
**District 4**



**Fayetteville Chamber of Commerce**  
Wednesday, November 16, 2016

# Current Funding



# Fixing America's Surface Transportation (FAST) Act

- Authorizes 5 Years of Funding
  - Federal Fiscal Years (FFYs) 2016-2020
- \$225.2 Billion for Highway Investment
- \$250 Million Increase for Arkansas over 5 Years
  - \$250 Million Increase from FFY 2015



**STATE FISCAL YEARS 2016-2020**  
**ESTIMATED STATE HIGHWAY REVENUE ANALYSIS**  
 x \$1,000,000

	2016	2017	2018	2019	2020	AVG
<b>Sources and Revenues:</b>						
Motor Fuels and Registration Fees	\$ 356.4	\$ 358.2	\$ 360.0	\$ 361.8	\$ 363.6	
4¢ Diesel Tax - Committed to the Interstate Rehab. Program (IRP)	\$ 16.5	\$ 16.5	\$ 16.5	\$ 16.5	\$ 16.5	
Natural Gas Severance Tax	\$ 29.0	\$ 29.7	\$ 30.4	\$ 31.2	\$ 32.0	
<b>TOTAL</b>	<b>\$ 401.9</b>	<b>\$ 404.4</b>	<b>\$ 406.9</b>	<b>\$ 409.5</b>	<b>\$ 412.1</b>	<b>\$ 407.0</b>
<b>Less Fixed Expenditures:</b>						
Maintenance	\$ 221.8	\$ 222.9	\$ 224.0	\$ 225.1	\$ 226.3	
Administration	\$ 21.8	\$ 21.9	\$ 22.0	\$ 22.1	\$ 22.2	
Operations	\$ 26.2	\$ 26.4	\$ 26.5	\$ 26.6	\$ 26.8	
Budgeted Construction w/o Right of Way	\$ 44.9	\$ 45.1	\$ 45.4	\$ 45.6	\$ 45.8	
IRP Debt Service	\$ 16.5	\$ 16.5	\$ 16.5	\$ 16.5	\$ 16.5	
<b>TOTAL</b>	<b>\$ 331.3</b>	<b>\$ 332.8</b>	<b>\$ 334.4</b>	<b>\$ 336.0</b>	<b>\$ 337.6</b>	<b>\$ 334.5</b>
Total State Highway Funds Available for Highway Construction Program	\$ 70.6	\$ 71.6	\$ 72.5	\$ 73.5	\$ 74.5	\$ 72.5
Less Required State Highway Matching Funds for Federal Highway Funds	\$ 116.7	\$ 119.4	\$ 121.9	\$ 124.8	\$ 127.8	\$ 122.1
<b>Shortfall in State Highway Matching Funds Needed for Federal Highway Funds</b>	<b>(\$ 46.1)</b>	<b>(\$ 47.8)</b>	<b>(\$ 49.4)</b>	<b>(\$ 51.3)</b>	<b>(\$ 53.3)</b>	<b>(\$49.6)</b>



# Act 1 - Arkansas Highway Improvement Plan of 2016

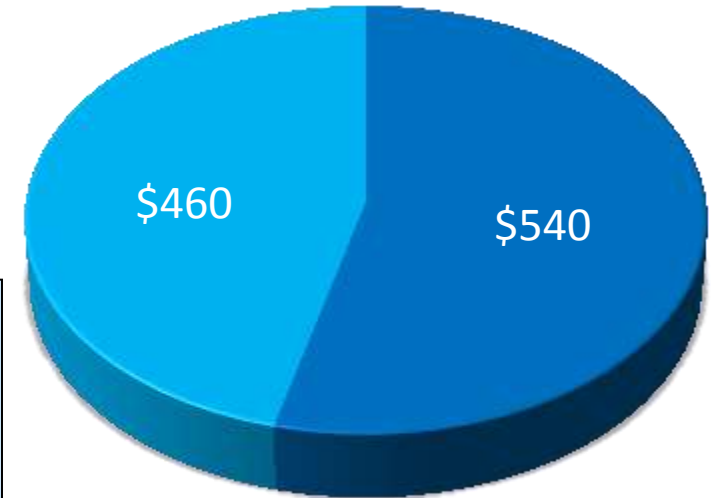
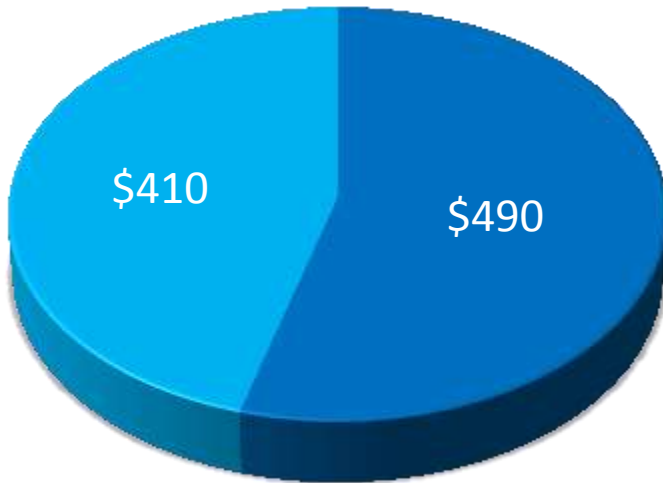
	FY17	FY18	FY19	FY20	FY21
	(x \$1 M)				
<b>2016 Special Session</b>					
Long Term Reserve Fund (formerly named Arkansas Rainy Day Fund)	40.0				
Securities Reserve Fund	1.5	20.0	20.0	20.0	20.0
Redirect the \$4 Million of the Diesel Tax that goes to General Revenue to Highways (70/30 split)		2.7	2.7	2.7	2.7
Eliminate the State Central Services Deduction from 1/2 Cent Sales Tax (70/30 split)	5.4	5.4	5.4	5.4	5.4
<b>Sub-Totals 2016 Special Session</b>	46.9	28.1	28.1	28.1	28.1
<b>Potential in Future Years</b>					
Allocate up to 25% of Future GIF to Highways (Estimate Based on 10 Year Average)		48.0	48.0	48.0	48.0
<b>Totals 2016 Special Session and Potential in Future Years</b>	46.9	76.1	76.1	76.1	76.1



# Funding

Prior to the FAST Act

After the FAST Act  
and Special Session

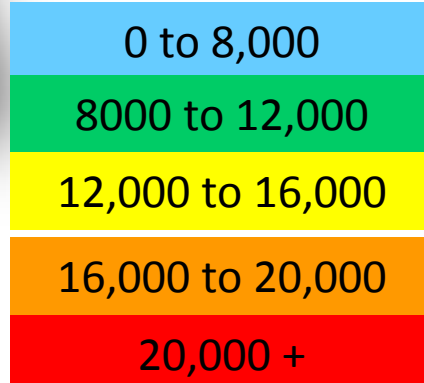
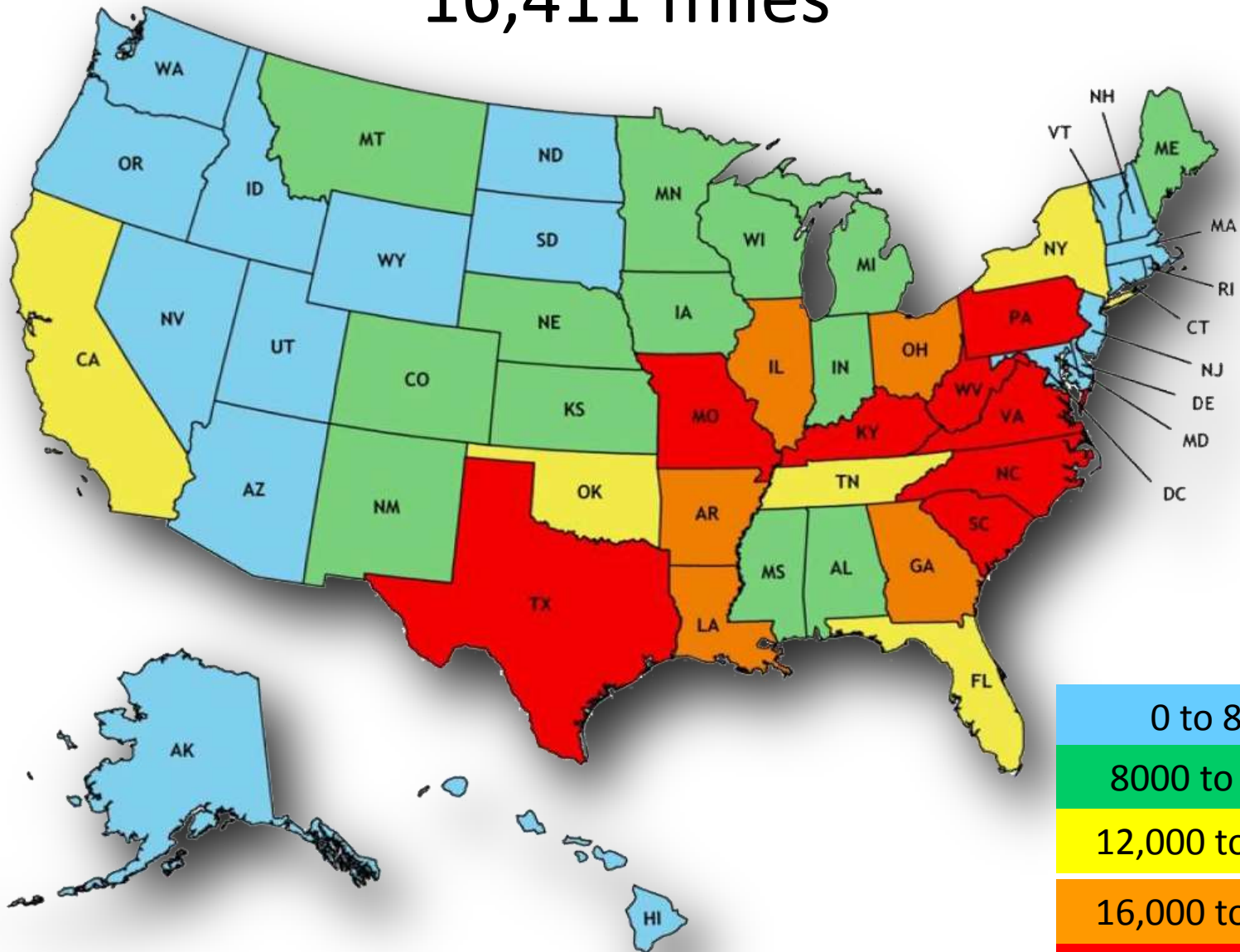


\$100 Million Difference



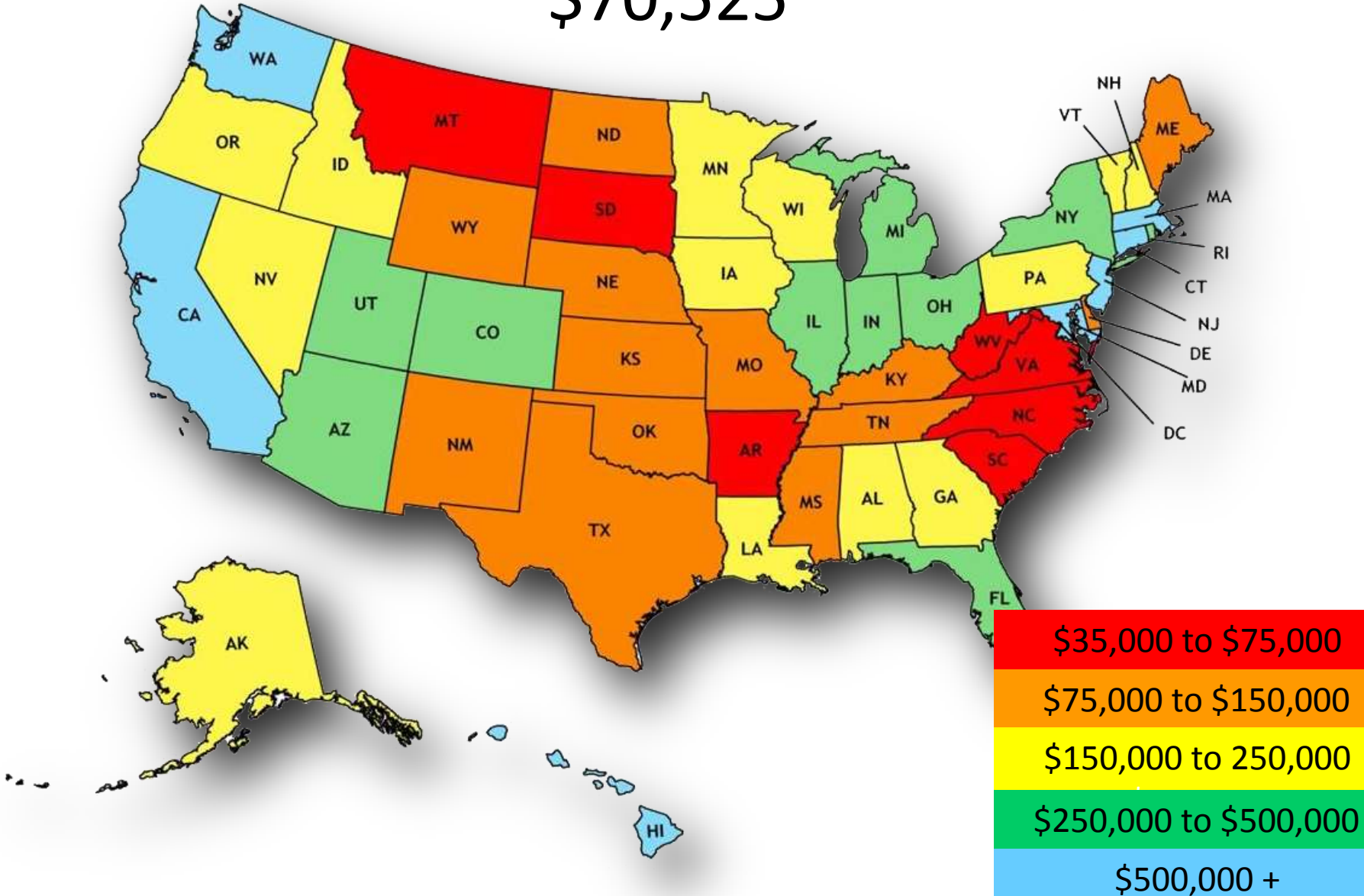
# 12<sup>th</sup> in Number of Miles

## 16,411 miles



# 40<sup>th</sup> in Revenue Per Mile

\$70,525





# Future Needs





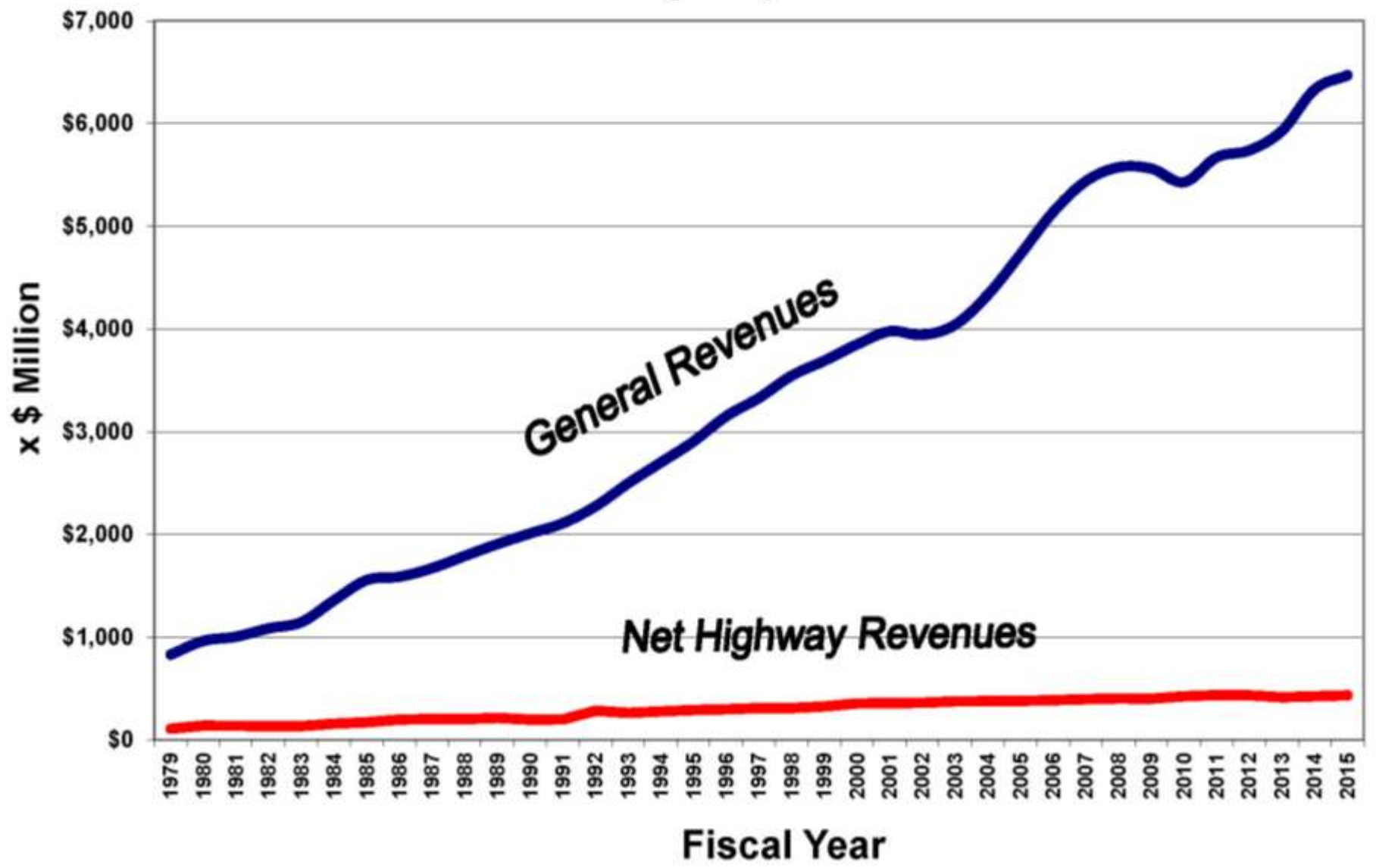
# Summary of Needs vs Revenue

	AMOUNT (x \$1 M)
<b>ESTIMATED REVENUE<sup>(1)</sup></b> Federal-aid + State	4,415
<b>TOTAL NEEDS<sup>(2)</sup></b> Pavement, Bridges, Capacity, Safety, Equipment, Facilities, ITS	9,001
<b>SHORTFALL</b>	<b>(4,586)</b>

(1) Revenue Not Currently Dedicated to Routine Maintenance, Administration and Operations

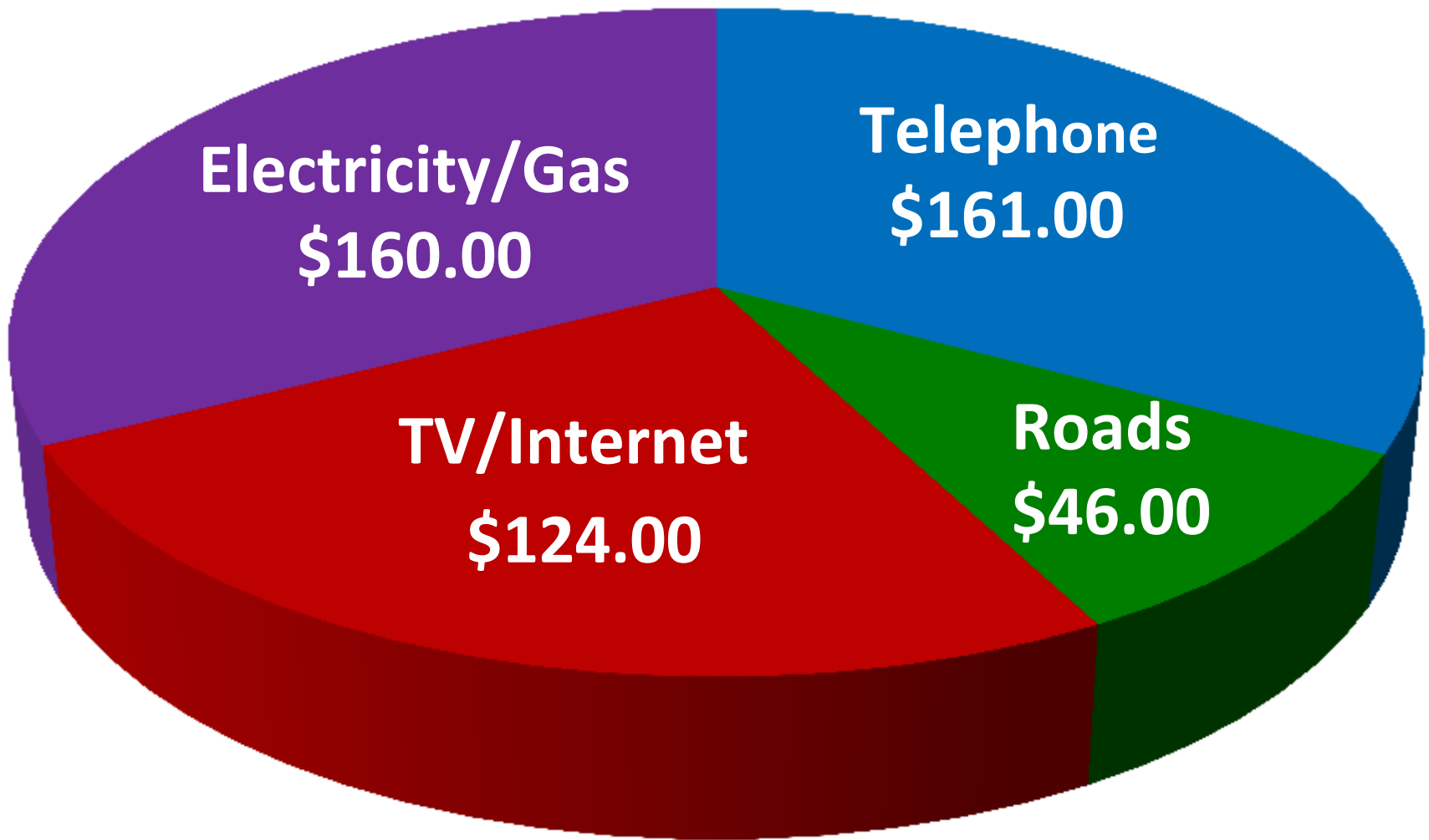
(2) Does Not Include Economic Development Connectors or Congressionally-Designated High Priority Corridors

# Arkansas State General Revenues vs AHTD Net Highway Revenues





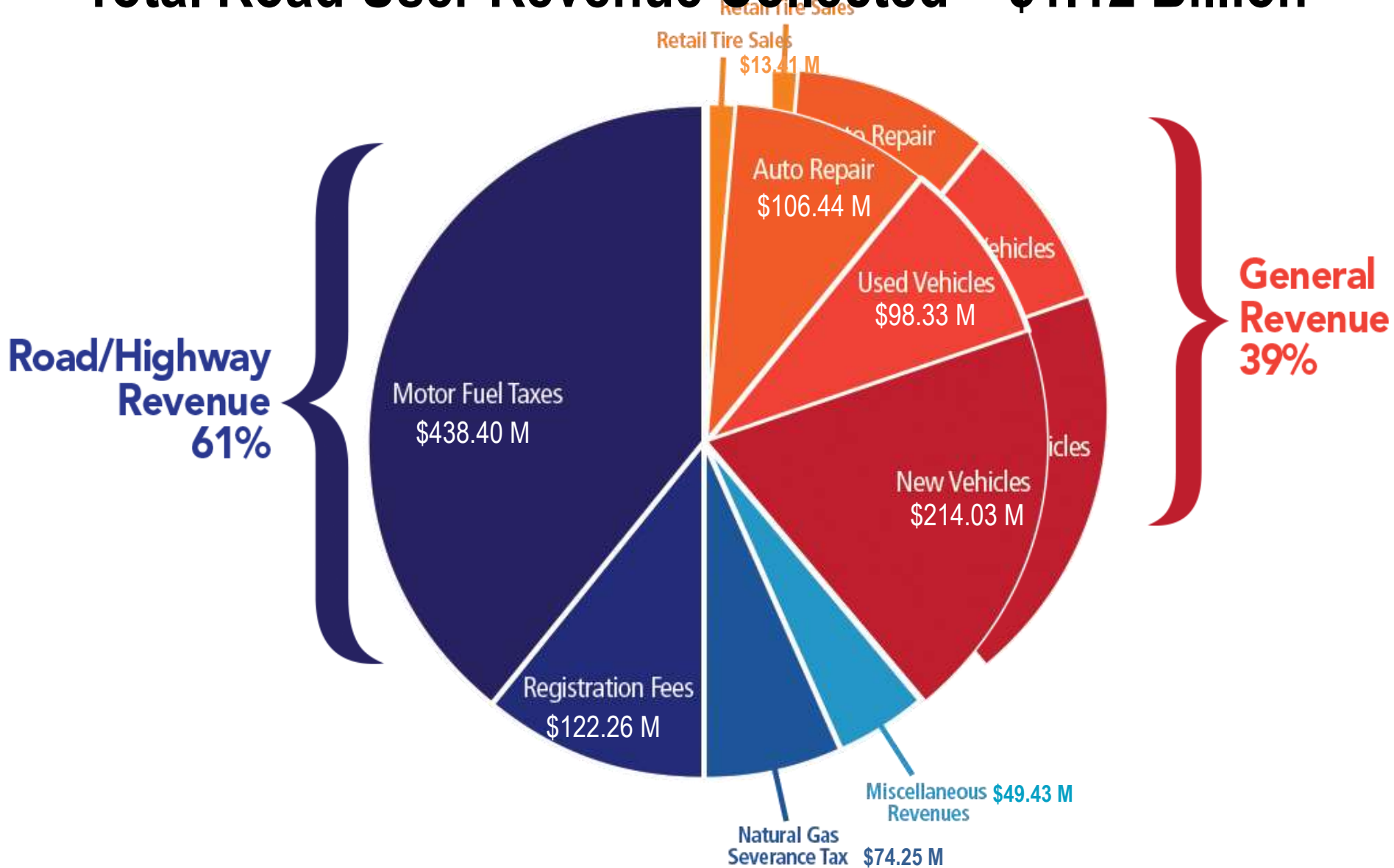
# Average Monthly Household Expenditures





# 2015 Road User Related Tax Revenue

## Total Road User Revenue Collected = \$1.12 Billion

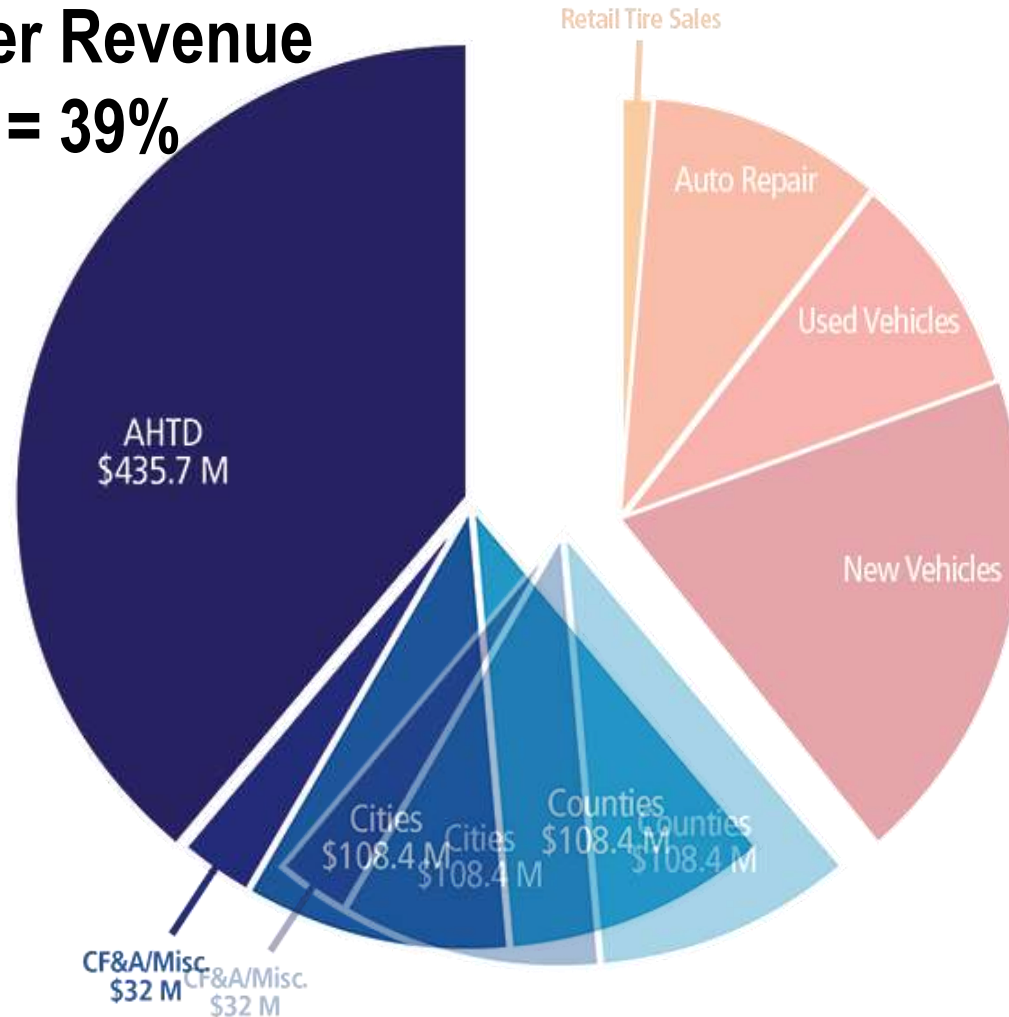




# 2015 Road User Related Tax Revenue

**Total Road User Revenue Collected = \$1.12 Billion**

**AHTD Road User Revenue  
= \$435.7 M = 39%**

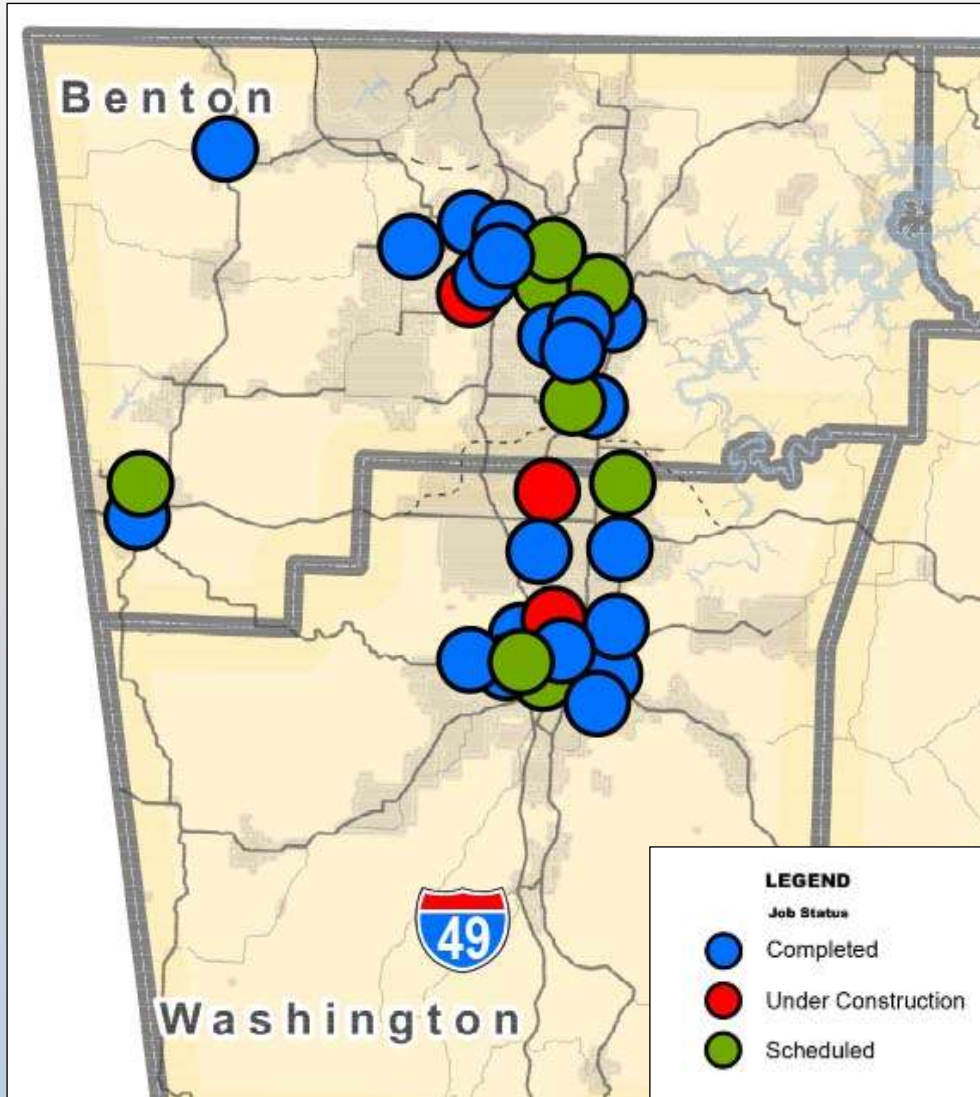


# Partnerships





# Partnering







# Partnering



- Minute Order in 1984
- Contract in 1996
- City responsible for Utility relocations



**Widening 112 Spur  
Garland to I-49**



# Partnering

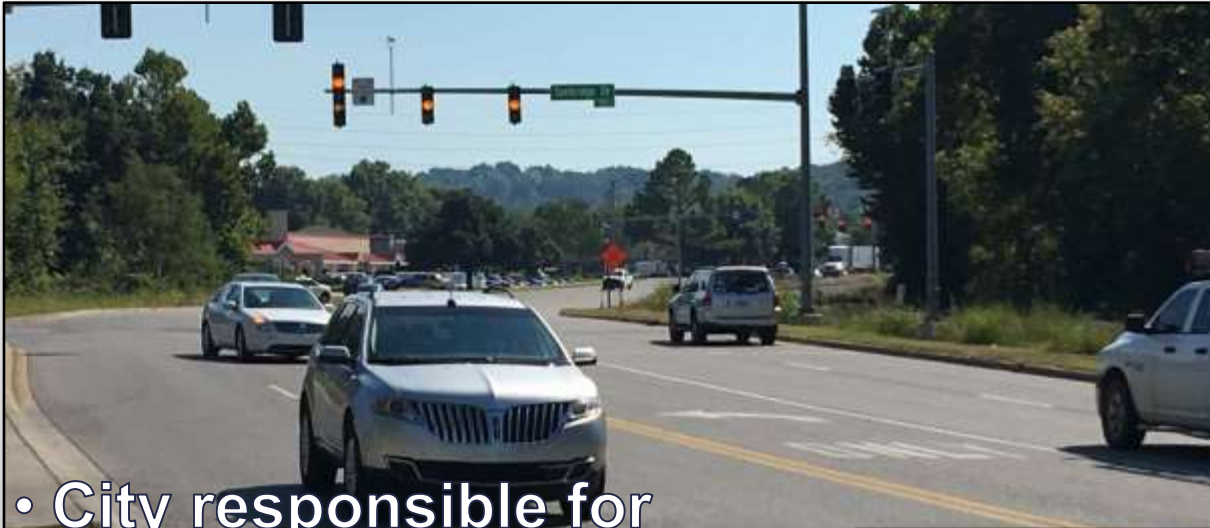
- Minute Order in 1985
- Contract in 1999
- City responsible for Right of Way and Utility relocations

**Widening Hwy. 265  
Hwy. 16 to Hwy. 45**





# Partnering



- City responsible for Right of Way and Utility relocations
- City accepted ownership upon project completion



**Widening Hwy. 180  
(Gregg Ave.)**

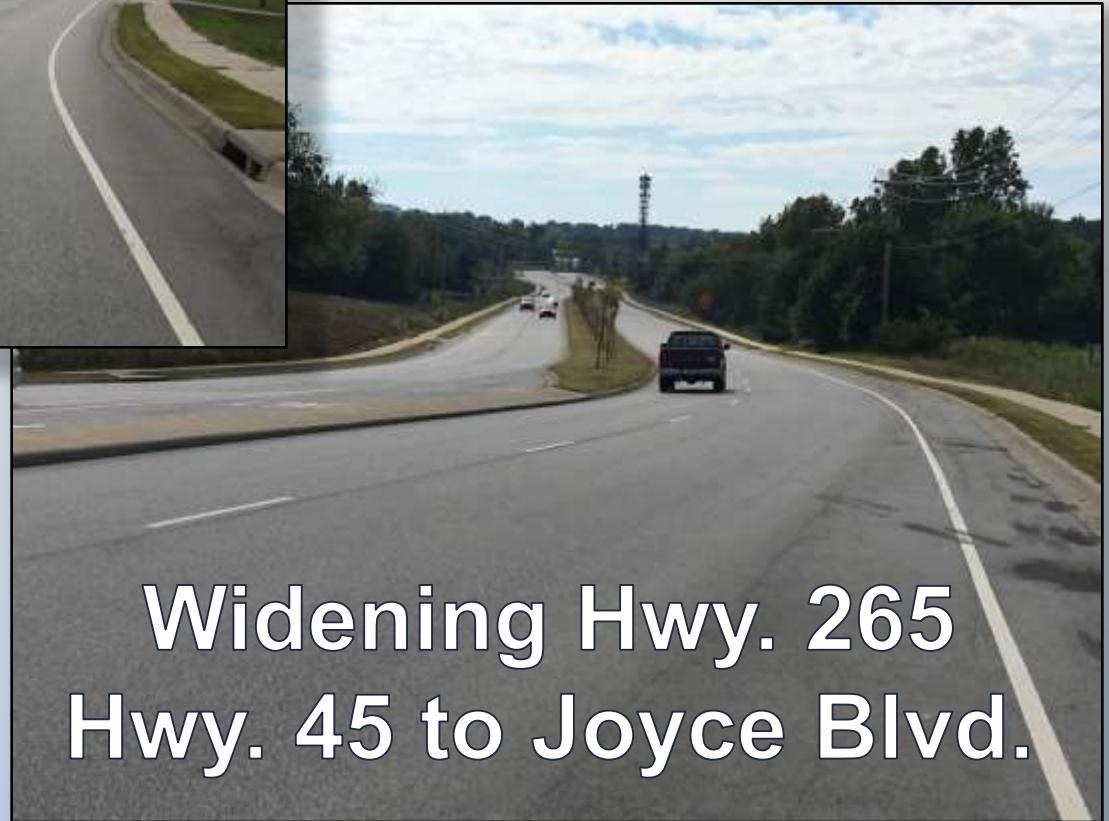


# Partnering



- City paid 50% of Construction costs up to \$7,700,000

Widening Hwy. 265  
Hwy. 45 to Joyce Blvd.

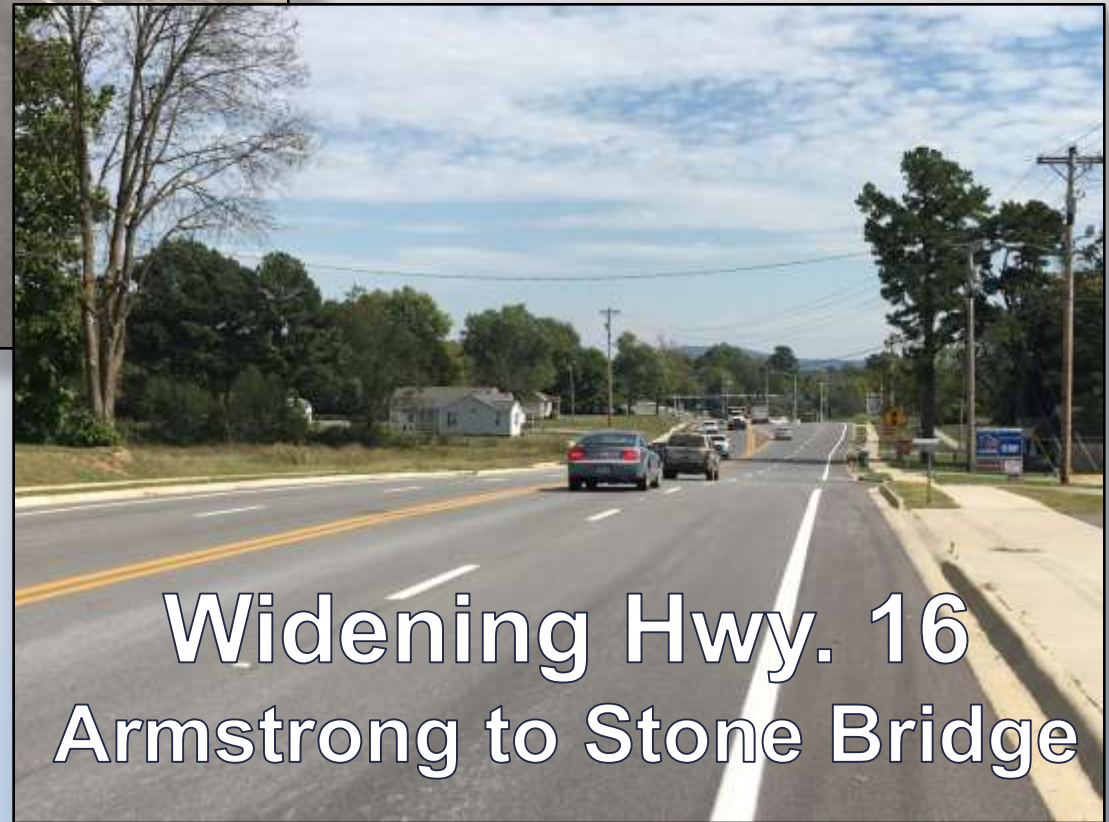




# Partnering



- City paid 50% of Construction costs up to \$5,000,000



**Widening Hwy. 16  
Armstrong to Stone Bridge**



# Partnering

- City committed \$4,200,000 for Right of Way, Utilities, and Construction costs



I-49 & Hwy. 112/71B  
Widening & Interchange



# A Different kind of Partnering

Makeshift raft successfully crosses Bull Shoals!



# Project Update







# Benton & Washington Counties: 2005-2022



## COMPLETED

203 Projects  
309.1 Miles  
\$471.1 Million

## UNDER CONSTRUCTION

25 Projects  
53 Miles  
\$294.6 Million

## SCHEDULED

68 Projects  
141.7 Miles  
\$578.2 Million

# Interstate 49



# Corridor



# Interstate 49 Corridor Benton & Washington Counties



- 1991 – High Priority Corridor
- Completed 1999
- \$603 Million
- Bobby Hopper Tunnel
- April 2014 – Signed as I-49



Since 2005

## COMPLETED

11 Projects  
7.4 Miles  
\$100 Million

## UNDER CONSTRUCTION

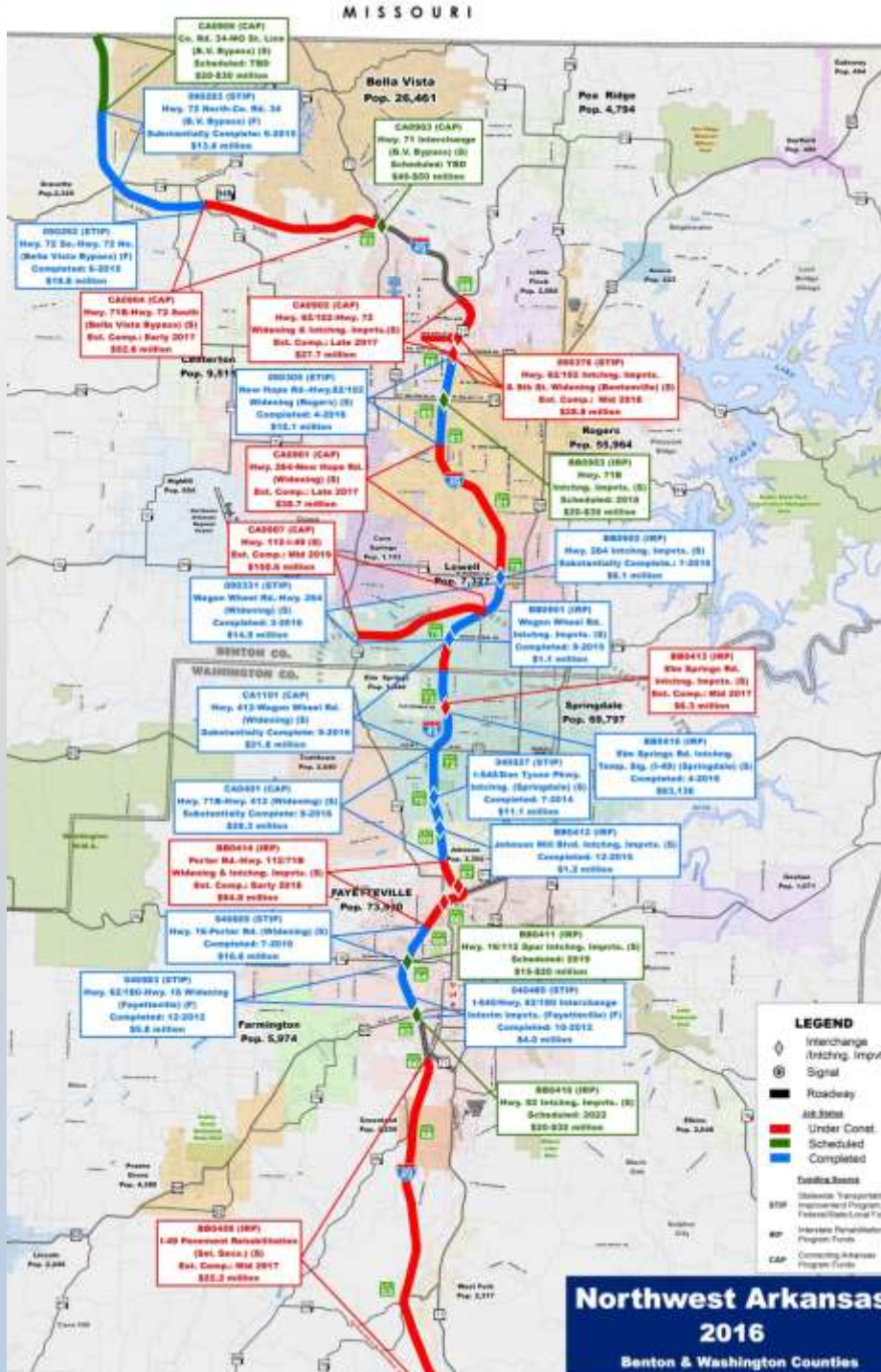
4 Projects  
13.6 Miles  
\$109 Million

## SCHEDULED

10 Projects  
16.0 Miles  
\$302 Million



Interstate  
 49  
 Corridor





# Interstate 49 Corridor Rehabilitation



## I-40 - Hwy. 62 in Fayetteville

✓ Under Construction

- 28.4 Miles
- \$22 Million



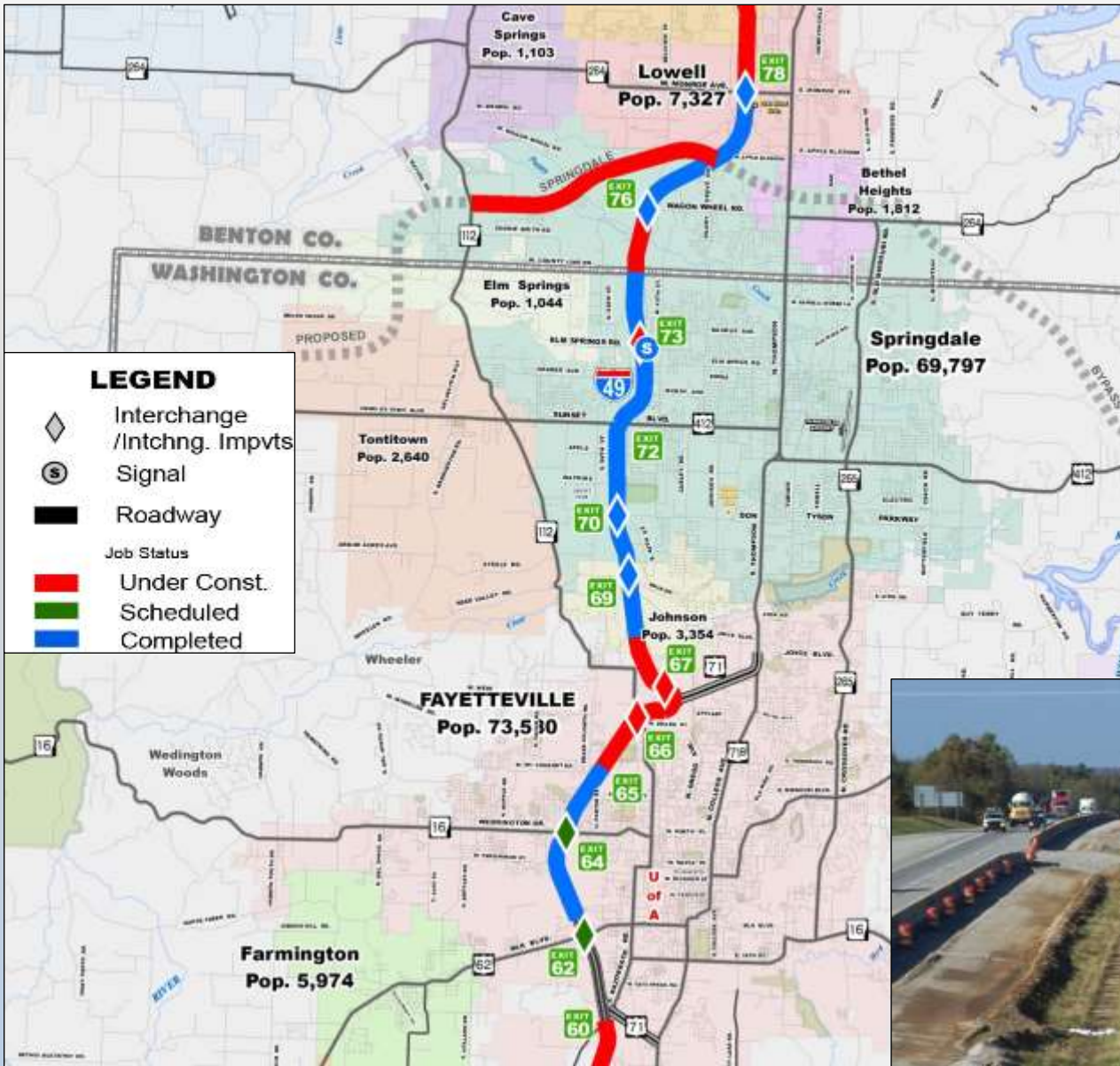


# Interstate 49 Corridor Widening & Interchange Improvements



## Hwy. 62 – Wagon Wheel Road

- ✓ Completed
  - 1 Mile
  - \$90 Million
- ✓ Under Construction
  - 3 Miles
  - \$101 Million
- ✓ Scheduled
  - \$45 Million





# Job BB0414





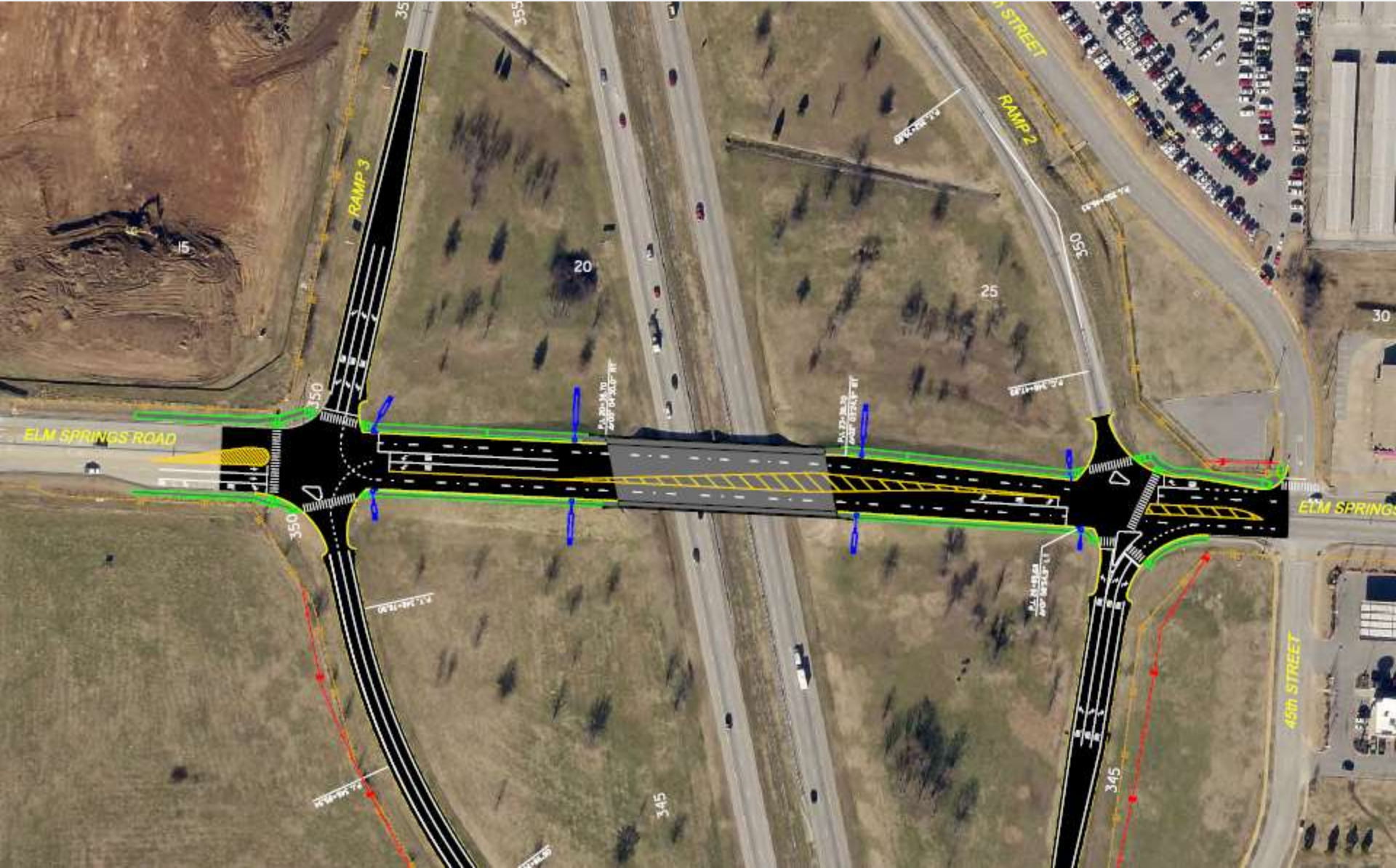
# Job BB0414







# Job BB0413



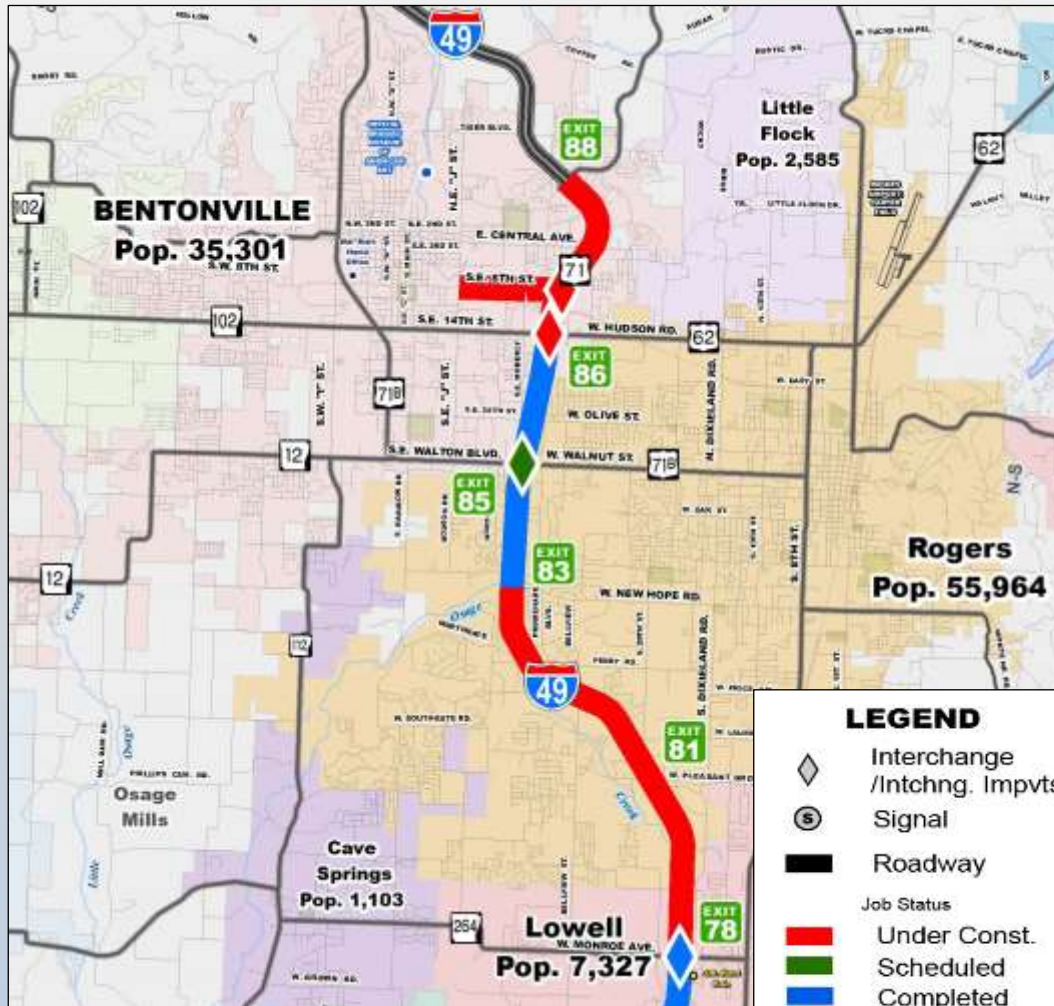


# Interstate 49 Corridor Widening & Interchange Improvements



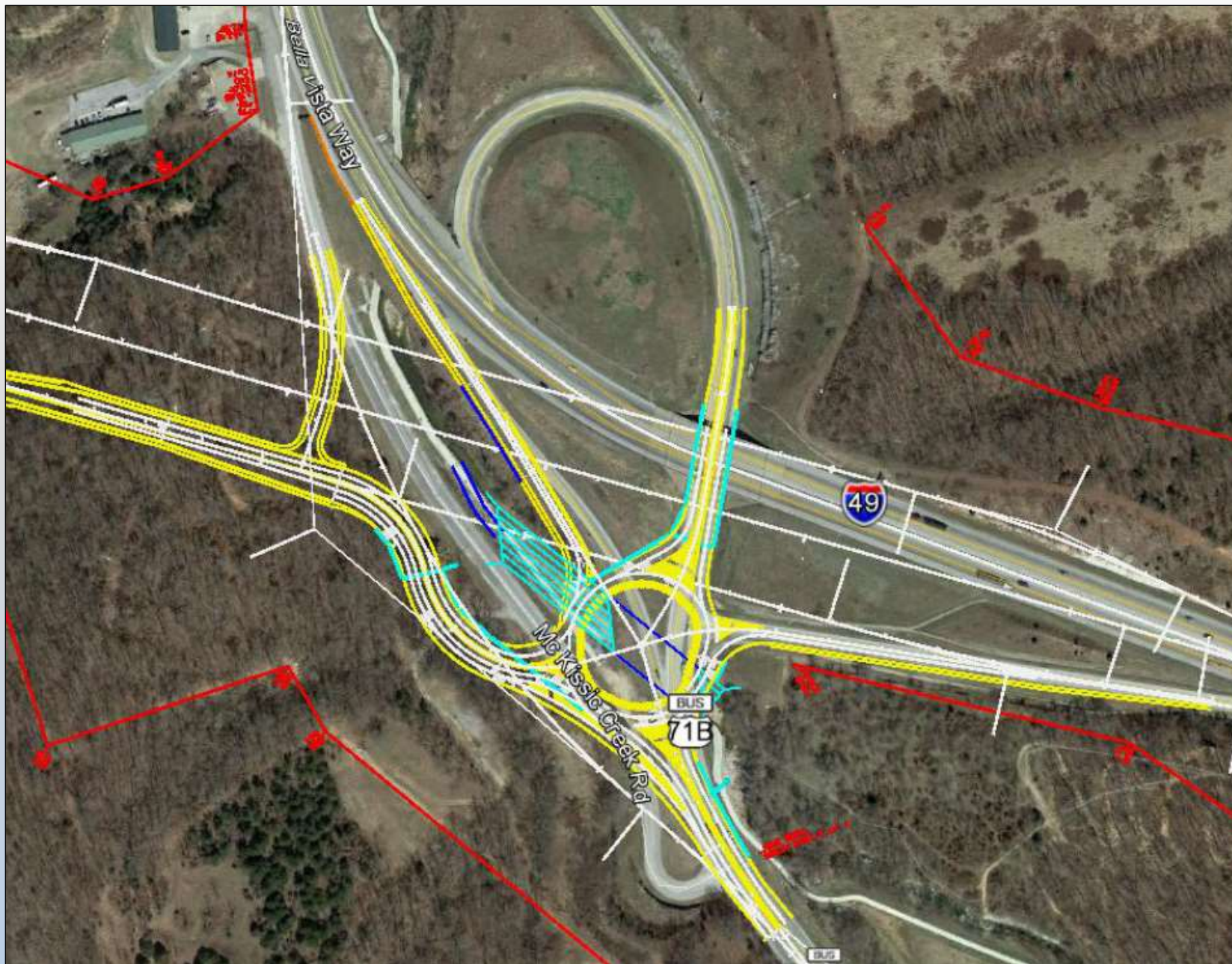
## Wagon Wheel Rd. – Hwy. 71B

- ✓ **Completed**
  - 5.4 Miles
  - \$34 Million
- ✓ **Under Construction**
  - 6.4 Miles
  - \$53 Million
- ✓ **Scheduled**
  - 5.4 Miles
  - \$69 Million



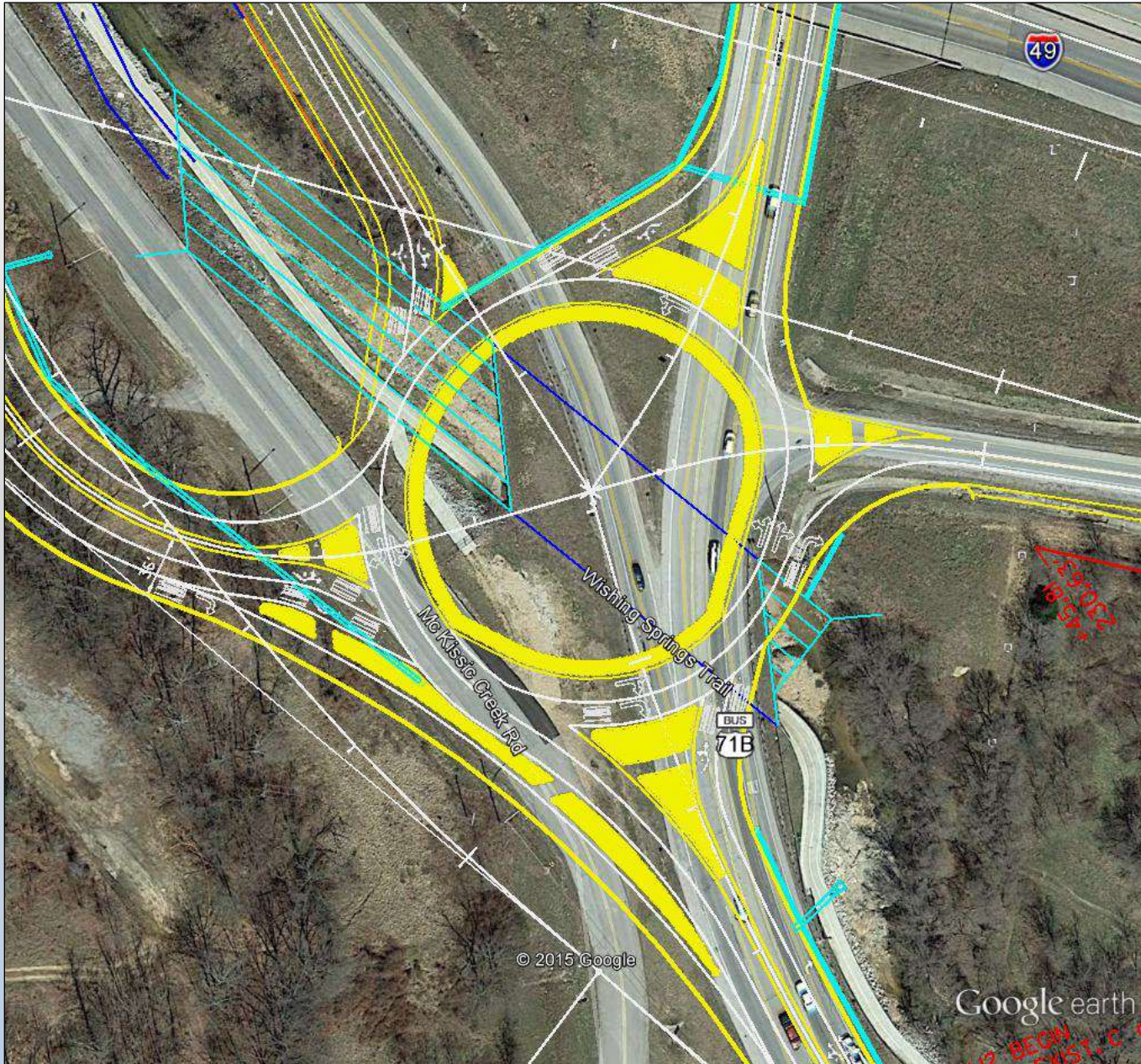


# Bella Vista Bypass Roundabout



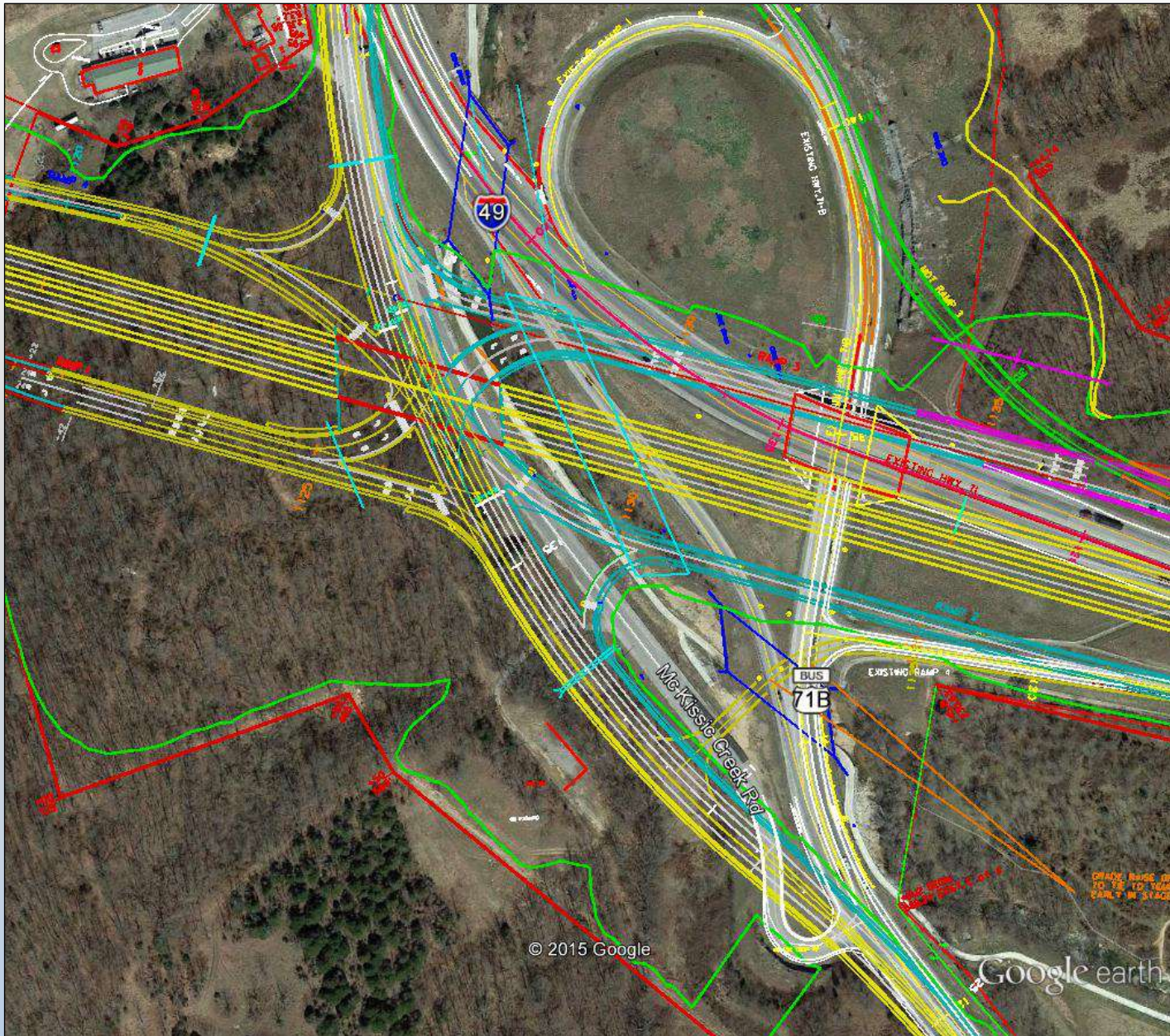


# Bella Vista Bypass Roundabout





# Bella Vista Bypass SPUI





# Interstate 49 Corridor New Location



## Bella Vista Bypass

- |                  |   |                  |
|------------------|---|------------------|
| <b>Completed</b> | ✓ | <b>Scheduled</b> |
| • 5.4 Miles      |   | • 5.4 Miles      |
| • \$34 Million   |   | • \$69 Million   |
- Under Construction**
- 6.4 Miles
  - \$53 Million

- ✓ **Draft STIP**
  - \$50 Million
  - Ultimate Interstate
  - Contingent Upon Missouri



# Other Highways



# of Interest



# Highway 112 Corridor

- Fayetteville - Bentonville
- Study Adopted
- Major North/South Corridor
- Total Cost \$90 Million to \$140 Million
- Draft Statewide Transportation Improvement Program for Federal Fiscal Years 2016-2010 (STIP)
  - ✓ Hwy. 112 Corridor Improvements
    - Preliminary Engineering / Right-of-Way
    - \$13.0 Million
    - 2017

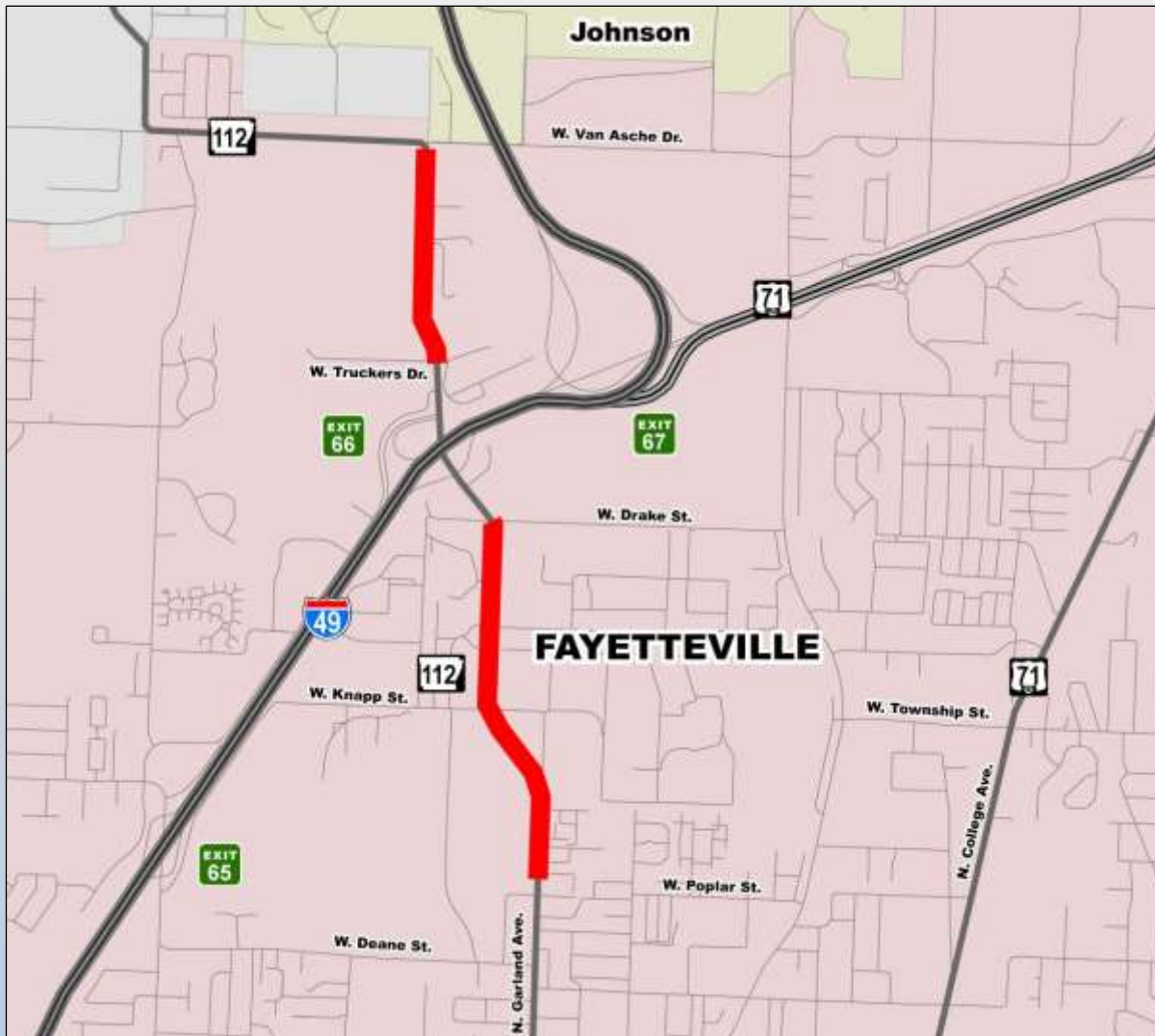






# Highway 112 Corridor

## Poplar Street – Van Asche Dr.



- ✓ Draft STIP
- Widening 1.6 miles
- \$6.4 Million
- 2018





# Highway 265 Corridor

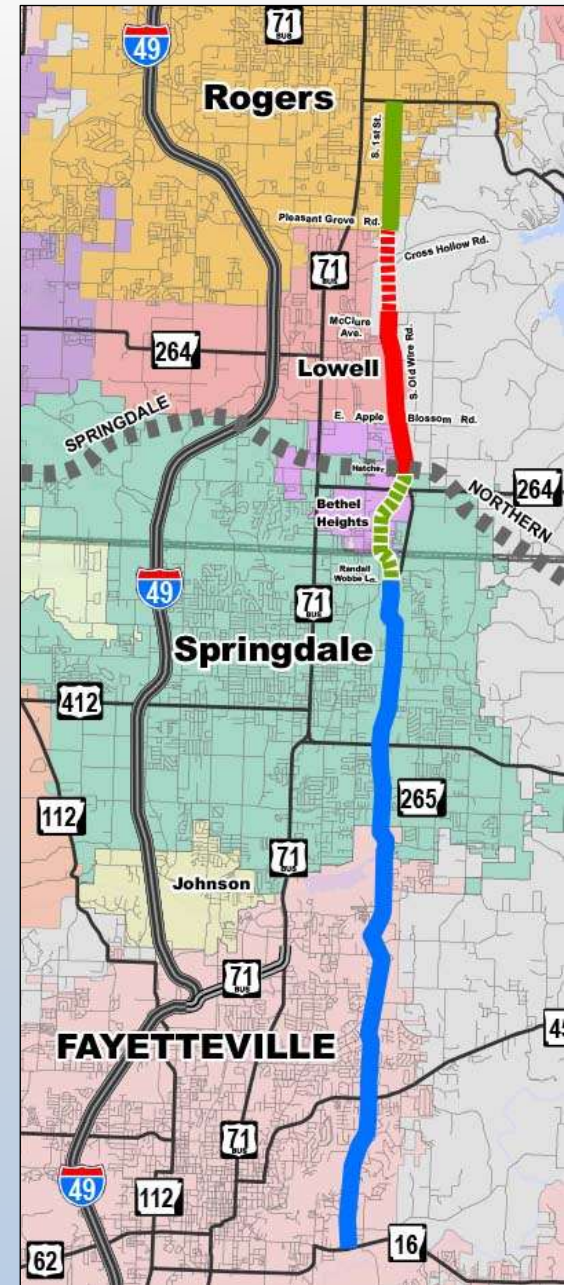


## Fayetteville - Rogers

- ✓ **Completed**
  - 3.1 Miles
  - \$14 Million
  
- ✓ **Under Construction**
  - 4.0 Miles
  - \$15 Million
  
- ✓ **Draft STIP**
  - 4.6 Miles
  - \$23 Million



LEGEND	
	Completed
	Under Construction
	Programmed
	New Location
	Existing Location

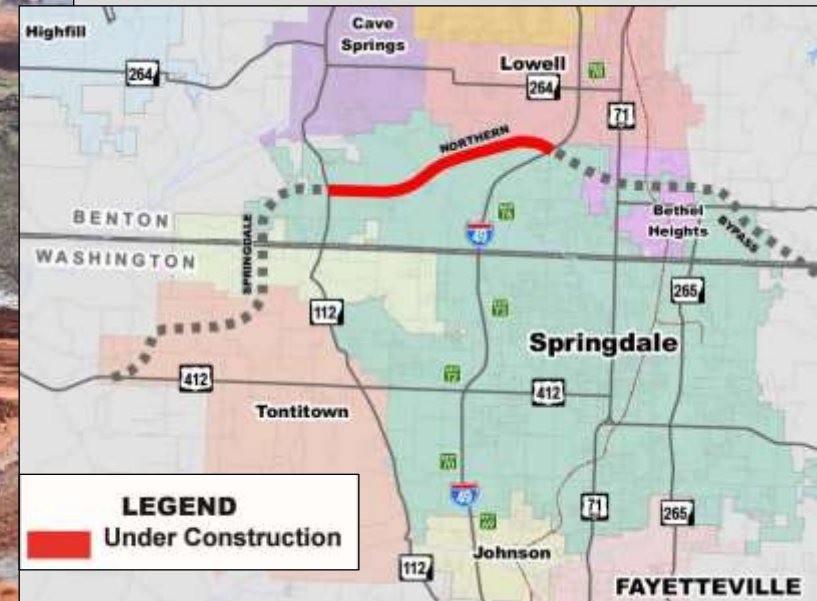




# Springdale Bypass (Hwy. 412)



- Hwy 112 – I-49
- Began Early 2015 / Complete Mid-2019
- \$100.6 million
- Most Expensive Job in AHTD History





# Federal Aid Projects

## Statewide

Funding Program	Number of Projects	Total Awarded
Transportation Alternatives Program (TAP)	71	\$15,970,981
Safe Routes to School Program (SRTS)	8	\$1,207,262
Recreational Trails Program (RTP)	28	\$3,186,694
<b>All Programs Total</b>	<b>107</b>	<b>\$20,364,937</b>

## Benton and Washington Counties

Funding Program	Number of Projects	Total Awarded
Transportation Alternatives Program (TAP)	10	\$2,313,740
Safe Routes to School Program (SRTS)	2	\$172,383
Recreational Trails Program (RTP)	2	\$131,000
<b>All Programs Total</b>	<b>14</b>	<b>\$2,617,123</b>



- [ArkansasHighways.com](http://ArkansasHighways.com)
- [ConnectingArkansasProgram.com](http://ConnectingArkansasProgram.com)
- [Vimeo.com/AHTD](http://Vimeo.com/AHTD)
- [IDriveArkansas.com](http://IDriveArkansas.com)
- [Twitter.com @AHTD](https://twitter.com/AHTD)



@AHTD

