



## INTEROFFICE MEMORANDUM

---

June 12, 2018

**TO:** Master Files

**FROM:** JFM John Fleming, Division Head, Environmental Division *h Price*

**SUBJECT:** Job Number GF0270  
McCallie Boat Ramps and Pkg. Lot (Mississippi River) (S)  
Desha County  
Environmental Documentation for State Funded Projects

The Arkansas Game and Fish Commission is proposing to construct two boat ramps and associated parking areas at the McCallie Access. A project location map is attached.

No environmental impacts are anticipated as a result of this project. Cultural resources will not be affected; SHPO clearance is attached. Section 7 Endangered Species Act coordination was conducted by the US Army Corps of Engineers as part of the Section 404 Permit process.

JF:MP:fc

### Attachments

- Location Map
- SHPO Clearance
- USACE Correspondence / Section 404 Permit
- Environmental Study Checklist

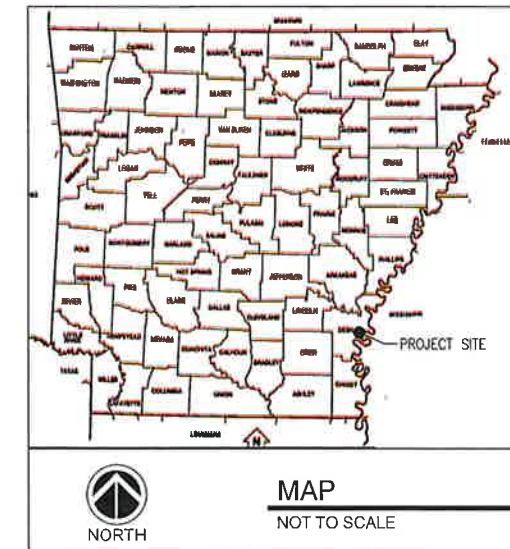
c: Program Management  
Right of Way  
District 2

# PRIMARY ACCESS RAMP

DESIGN DEVELOPMENT PROGRESS SET  
DECEMBER 1, 2017

McCALLIE ACCESS  
DESHA COUNTY, ARKANSAS

SHEET INDEX	
Sheet Number	Sheet Title
C-000	COVER SHEET
C-001	NOTES
C-100	EXISTING CONDITIONS & DEMOLITION PLAN
C-110	SITE PLAN
C-120	GRADING & EROSION CONTROL PLAN
C-130	RAMP PLAN AND PROFILE
C-131	RAMP DETAILS
C-500	CONSTRUCTION DETAILS



PREPARED BY:



Pickering Firm, Inc.  
Facility Design • Civil Engineering • Surveying •  
Transportation • Natural / Water Resources  
100 E. Huntington, Suite B  
Jonesboro, AR 72401  
870.813.7918

PREPARED FOR:





# DEPARTMENT OF THE ARMY

VICKSBURG DISTRICT, CORPS OF ENGINEERS

4155 CLAY STREET

VICKSBURG, MISSISSIPPI 39183-3435

REPLY TO  
ATTENTION OF:

May 2, 2018

Operations Division

**SUBJECT:** Department of the Army Section 404 and Section 10 Authorization under General Permit 25 for Regulated Activities Associated with the Proposed McCallie Mississippi River Access Project, Located at Approximate River Mile 568.2 and Approximate River Mile 568.3, in Desha County, Arkansas

Mr. Michael Cantrell  
Arkansas Game and Fish Commission  
1125 Highway 56 North  
Calico Rock, Arkansas 72519

Dear Mr. Cantrell:

You are hereby granted authorization under Section 404 of the Clean Water Act and Section 10 of the Rivers and Harbors Act of 1899 through the provisions of General Permit No. 25 to conduct regulated activities associated with the proposed construction of recreational boating facilities located at approximate Mississippi River Mile 568.2 (33.655035, -91.209259) and approximate Mississippi River Mile 568.3 (33.655112, -91.212201), in Desha County, Arkansas. Please note this General Permit expires September 30, 2019. Activities which are under construction, or that are under contract to commence, in reliance upon this General Permit will remain authorized provided the activity is completed within 12 months of the date of expiration of General Permit No. 25.

The site locations and the construction details are shown on the enclosed maps and drawings (enclosure 1). A copy of the General Permit is enclosed for your information (enclosure 2). It is your responsibility to read and become familiar with the Special and General Conditions of the General Permit in order for you to ensure that the activity authorized herein complies with these conditions.

This authorization of Department of the Army regulatory requirements does not convey any property rights, either in real estate or material or any exclusive privileges, and does not authorize any injury to property or invasion of rights or local laws or regulations, or obviate the requirement to obtain State or local assent required by law for the activity discussed herein.

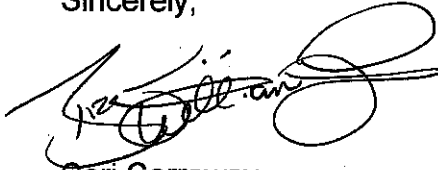
Upon completion of the activity authorized by this General Permit, please fill out the enclosed certification of compliance (enclosure 3) and return it to our office.

This authorization was based upon a preliminary determination that there appear to be jurisdictional areas on the property subject to regulation pursuant to Section 10 of the Rivers and Harbors Act of 1899 and 404 of the Clean Water Act. An appeals form has been enclosed for your review (enclosure 4).

Thank you for advising us of your plans. If you change your plans for the proposed work, or if the proposed work does not meet the conditions of the General Permit, please contact Ms. Jennifer Brown, telephone (601) 631-5147, or email: Jennifer.G.Brown@usace.army.mil. In any future correspondence concerning this project, please refer to Identification No. MVK-2017-112.

I am forwarding a copy of this letter to Ms. Cara Martin, Pickering Firm, Incorporated, 100 East Huntington, Suite B, Jonesboro, Arkansas 72401, Ms. Lazendra Hairston, Arkansas Department of Environmental Quality, 5301 Northshore Drive, North Little Rock, Arkansas, 72118-5317, and the United States Coast Guard, Sector Lower Mississippi River, 2. A. W. Willis Avenue, Memphis, Tennessee 38105.

Sincerely,

A handwritten signature in black ink, appearing to read "Cori Carraway", with a large, stylized flourish at the end.

For  
Cori Carraway  
Chief, Permit Section  
Regulatory Branch

Enclosures



*Service and Good Work...  
Our Foundation, Our Future  
Since 1946*

December 12, 2017

**To: District Engineer  
U.S. Army Corps of Engineers  
ATTN: Regulatory, Jennifer Brown  
Senior Environmental Specialist  
4155 East Clay Street  
Vicksburg, MS 39183-3435**

**Re: Request for General Permit – 25 Coverage  
McCallie Mississippi River Access  
Arkansas Game and Fish Boat Ramps (MVK-2017-900)**

Ms. Brown,

On behalf of the Arkansas Game and Fish Commission (AGFC), Pickering Firm, Inc. (Pickering) is submitting this Request for General Permit - 25 Coverage for U.S. Army Corps of Engineers (USACE) review and approval.

This project will consist of the construction of a High Water Access Ramp and Scenic overlook (Site 1) and a Primary Access Ramp (Site 2). Please refer to the attached Request for General Permit – 25 Coverage binder for detailed descriptions of the site locations, detailed plans, and other site specific information.

The Request for General Permit -25 was completed in accordance with the General Permit – 25 guidelines and your directions given in your email to Pickering dated November 28, 2017.

Please do not hesitate to contact me at (901) 729-5508 if you have any questions or should we need to provide additional information.

Sincerely,  
PICKERING FIRM INCORPORATED

A handwritten signature in black ink that reads "Cara Martin".

Cara L. Martin, PE  
Principal Owner

Enclosure 1

**McCallie Mississippi River Access  
Request For Authorization Under General Permit - 25**

**Prepared for:**



**Arkansas Game and Fish Commission  
1125 Hwy 56 N.  
Calico Rock, AR 72519**

**Prepared by:**



**Pickering Firm, Inc.  
6775 Lenox Center Court, Suite 300  
Memphis, Tennessee 38115  
(901) 726-0810  
[www.pickeringfirm.com](http://www.pickeringfirm.com)**

Enclosure 1

**INFORMATION AS REQUESTED**

1. Work will be conducted under GP-25
2. The work will be conducted in compliance with the terms and conditions of GP-25 and will not adversely impact adjoining properties.
3. **Agency/Owner:**  
Michael Cantrell  
Arkansas Game and Fish Commission  
1125 Hwy 56 N.  
Calico Rock, AR 72519  
  
**Agent:**  
Cara Martin  
Pickering Firm, Inc.  
100 E. Huntington, Suite B  
Jonesboro, AR 72401
4. **Location:**  
See attached Map (Attachment 1)  
Approximate River Mile 568  
Lat: N 33.654783, Long" W -91.210850  
Sec. East 1/2 of Sec 17; Township 12 S. Range 1 W.
5. **Description and Purpose:**  
The work consists of constructing two separate boat ramps with parking lots on the Mississippi River. One ramp is for high water access (Site 1) only and will be constructed totally above Ordinary High Water (OHW). The other ramp, known as the primary ramp (Site 2) will be constructed to serve as the primary boat ramp for river access in this area, and will be constructed over an existing revetment (Cypress Bend) to elevation 96.5. Low Water Reference Plane (LWRP) in this area is elevation 98. There is an existing boat ramp (see attachment 2) presently in this area located between the two new proposed ramps. This existing ramp is hardly serviceable and not usable during high water. The two new ramps will service the area both during normal and high water situations.
6. Drawings of both structures w/appurtenances is attached (Attachment 3) showing all dimensions, area impacted and amounts of excavated and fill material in CY.
7. Estimated start date is April 1, 2018 and estimated completion date is December, 2018.
8. A delineation of both locations was performed by FTN Assoc. of Little Rock, AR in April 2017. The report found no wetlands at either site and is attached as (Attachment 4).

9. The impact for the high water ramp (Site 1) is minimal, with no wetlands affected. The impact to the Mississippi River will also be minimal with construction occurring above OHW (127.1 NGVD). The ramp will impact 20 ft. along the Mississippi River.

Site 2 will include work below OHW with 85 ft of impact along the Mississippi River and placement of 2800 CY of fill (concrete, 601 Limestone and Type "C" riprap). Work will be performed to minimize impact on the area and least impact on the river. There will be a section of the ramp constructed as cast in place concrete down to an elevation that is allowable by the river stage at the time (estimated to be elevation 104.00). The remainder of the ramp will be constructed on the newly placed ramp in sections, then "pushed" into place, thus requiring no equipment within the river itself.

10. Best Management Practices will be utilized to minimize movement of disturbed soils from the project site into adjacent areas. This includes requirement for erosion control measures specified on the construction drawings such as silt fencing around entire disturbed area etc.
11. There are no wetlands to mitigate and the Site 2 ramp will be constructed with the minimal effect as possible using natural materials such as riprap as fill within the Mississippi River.
12. The project is beyond 1500 LF of a levee.
13. There is a potential of encountering fat pocketbook mussel and/or pallid sturgeon in the Mississippi River. If either species is encountered the proper measures will be taken to protect them. This requirement will be included in the construction contract. There is a known potential interior least tern site across the river and upstream on a sandbar. The work proposed will not impact this site, as no work is anticipated that requires equipment in the river.
14. The work has been coordinated with the Arkansas Historic Preservation Officer (SHPO) and found to have no impact. A letter to this affect is attached (Attachment 5).

**Attachments:**

1. Overall Map
2. Existing boat ramp aerial photo
3. Ramp Plans
4. FTN report
5. SHPO letter



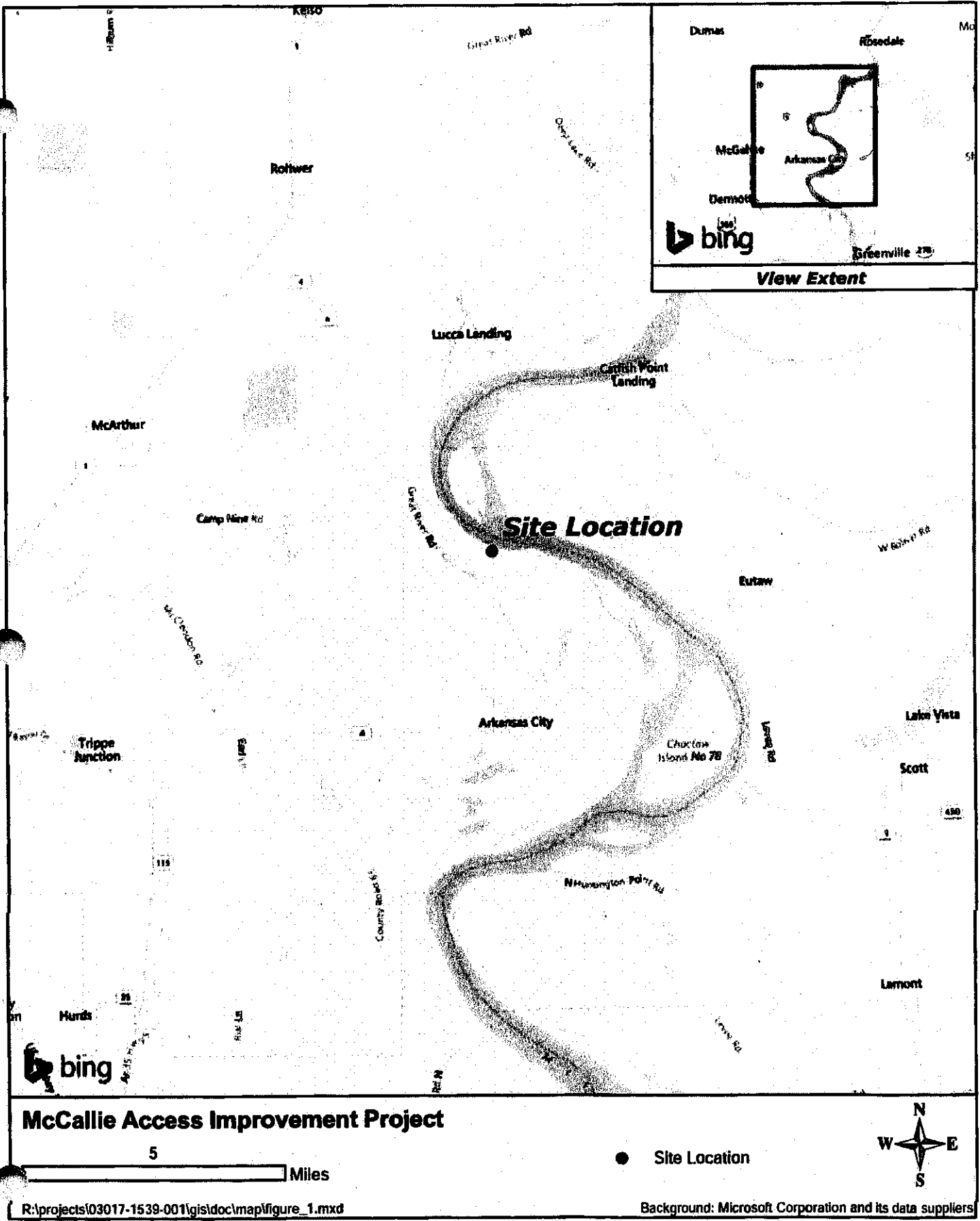


Figure 1. Vicinity Map



NORTH

**VICINITY MAP**  
NOT TO SCALE

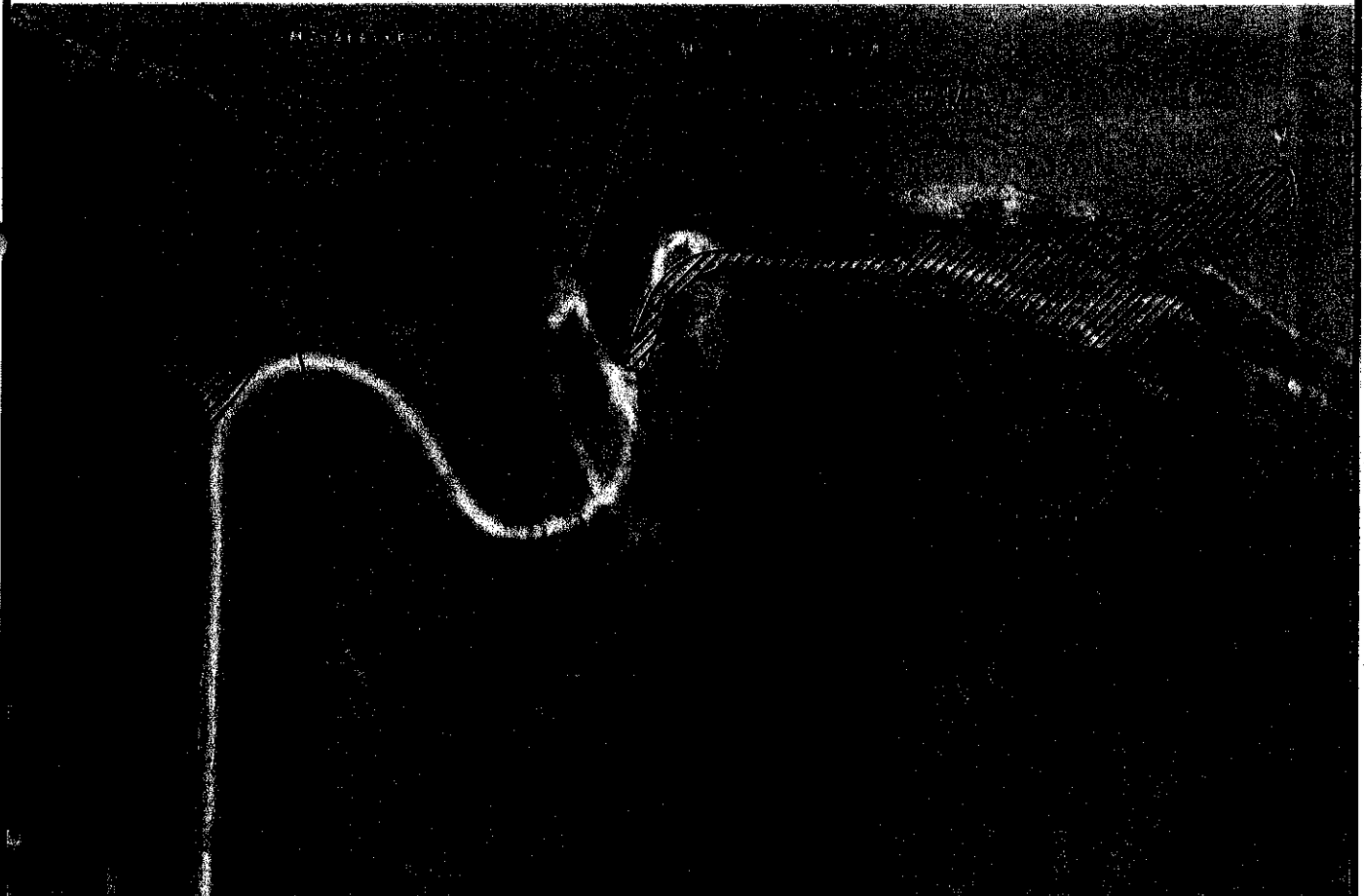


NORTH

0 125 250 500



1 INCH = 250 FEET



Pickering Firm, Inc.  
Facility Design • Civil Engineering • Surveying •  
Transportation • Natural / Water Resources

100 E. Huntington, Suite B  
Jonesboro, AR 72401  
870.819.7916

**McCALLIE MISSISSIPPI RIVER ACCESS**

TITLE

**SITE MAP**

DESCRIPTION  
**USACE GP-25 ATTACHMENT**

PROJECT #  
**25246.00 & 24246.01**

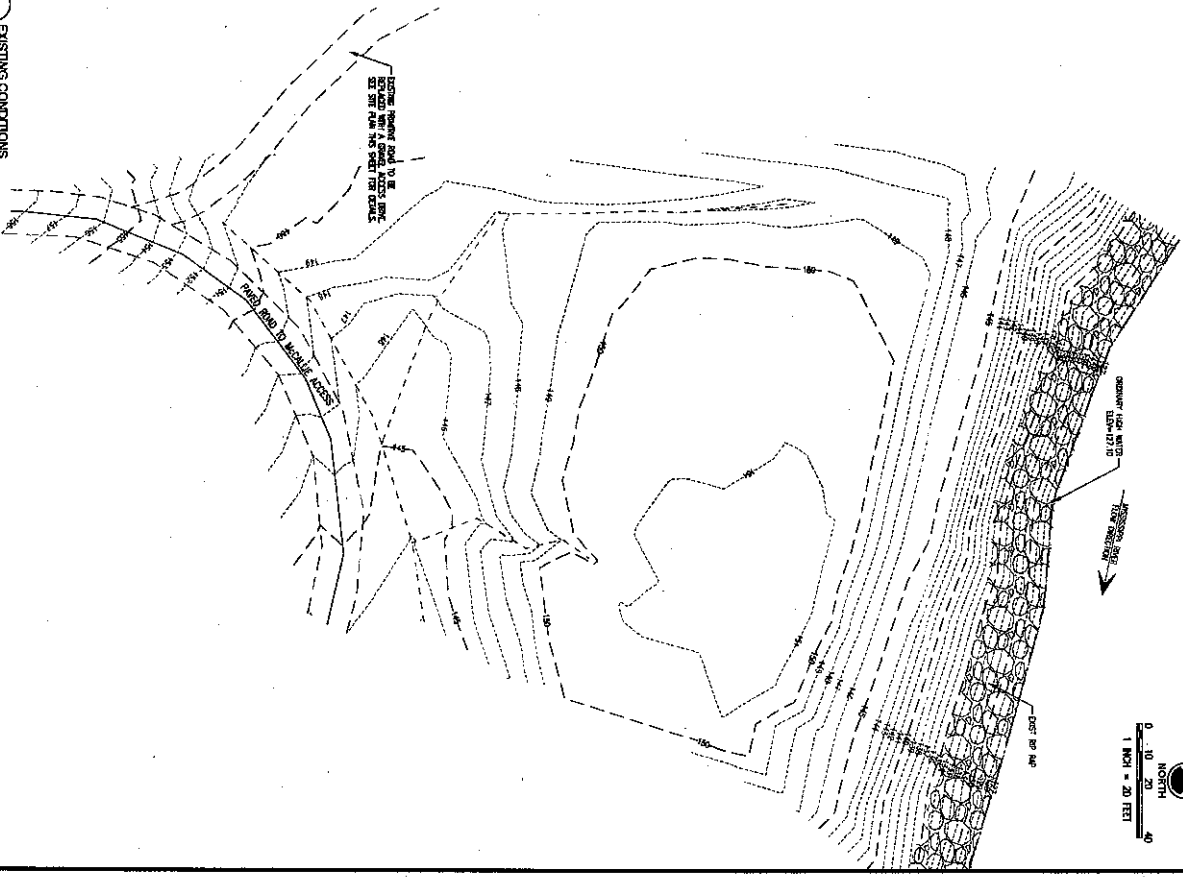
SHEET #

SCALE  
**1" = 250'**

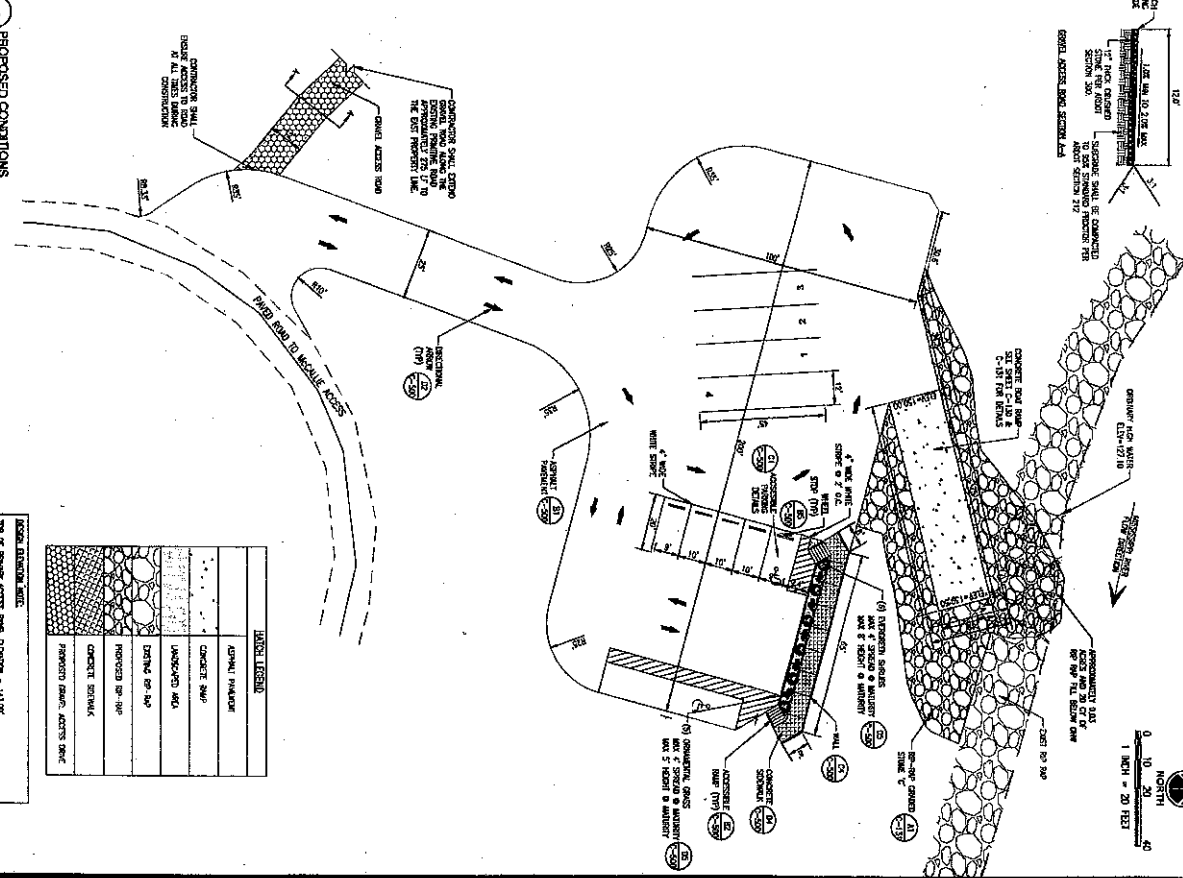
DATE  
**DEC. 1, 2017**

Enclosure **11 OF 1**

1A EXISTING CONDITIONS



1A PROPOSED CONDITIONS



**GENERAL NOTES:**

1. THE PROPOSED ROAD ACCESS RAMP SHALL BE CONSTRUCTED TO THE EXISTING PROPOSED ROAD.
2. THE PROPOSED ROAD ACCESS RAMP SHALL BE CONSTRUCTED TO THE EXISTING PROPOSED ROAD.
3. THE PROPOSED ROAD ACCESS RAMP SHALL BE CONSTRUCTED TO THE EXISTING PROPOSED ROAD.

ITEM	DESCRIPTION
1	GENERAL FINISH
2	CONCRETE DAM
3	LANDSCAPED AREA
4	GRAVEL SPILLWAY
5	PROPOSED SPILLWAY
6	CONCRETE DAM
7	PROPOSED DAM ACCESS RAMP

CONSTRUCTION DOCUMENT SET

C-100



**SCENIC TURNOUT & HIGH WATER ACCESS RAMP**  
**McCALLIE ACCESS**  
**DESHA, ARKANSAS**

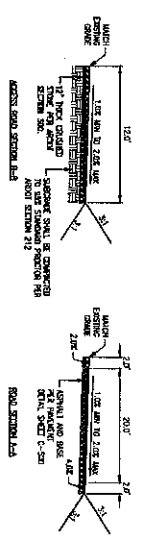
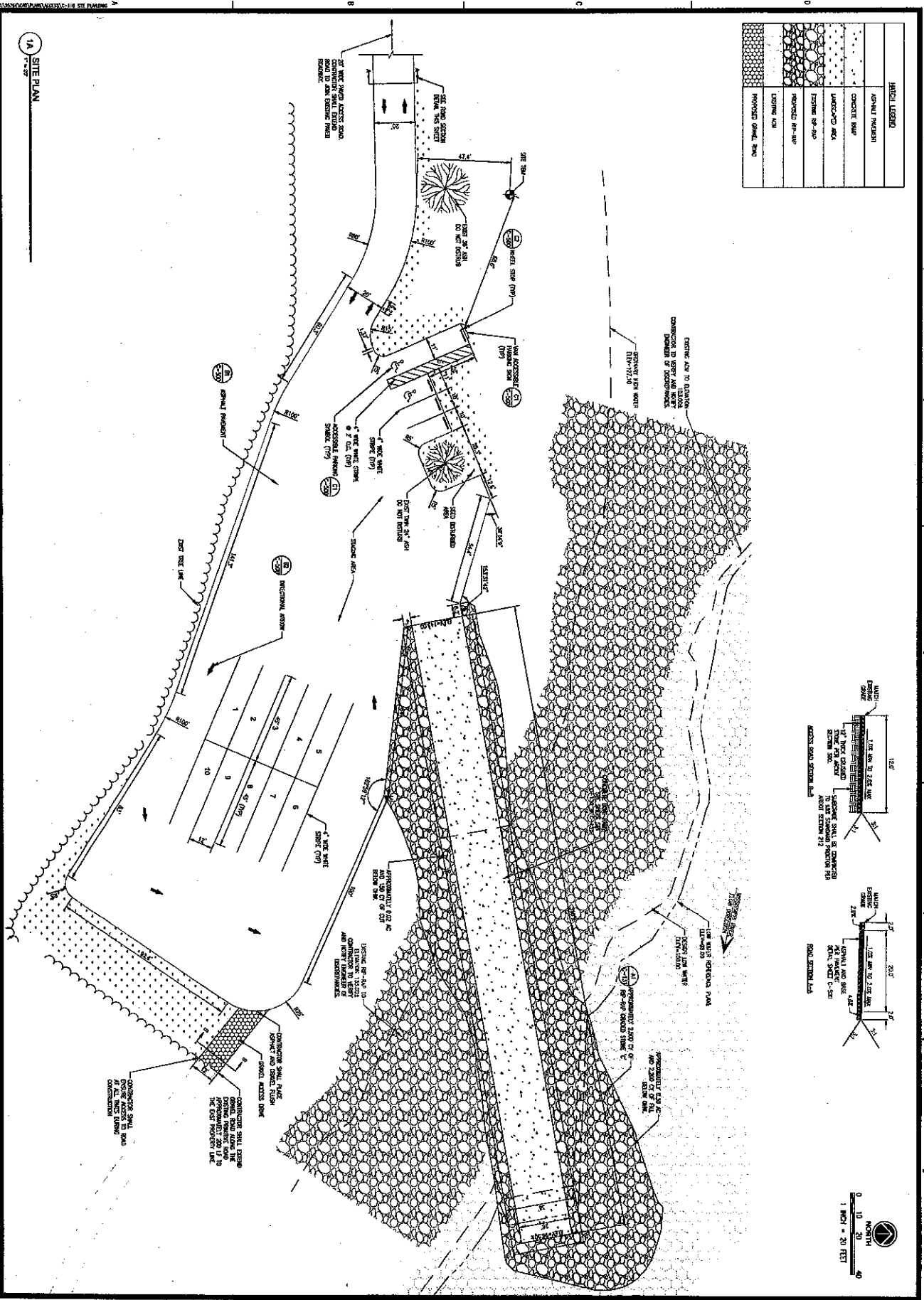
**Pickering**  
 Pickering Firm, Inc.  
 Facility Design • Civil Engineering • Surveying •  
 Transportation • General/ Water Resources  
 100 E. Washington, Suite B  
 Jonesboro, AR 72401  
 870.818.7818

PROJECT #	2388-100
DATE	JANUARY 10, 2018
DRAWN BY	PH
DESIGNED BY	PH
CHECKED BY	PH

NO.	DATE	DESCRIPTION



MATERIAL LEGEND	
	SMALL FRAGMENT
	CONCRETE RAMP
	LANDSCAPE AREA
	EXISTING 18'-0" x 30'
	PROPOSED 18'-0" x 30'
	EXISTING 18'
	PROPOSED SMALL RAMP



1A SITE PLAN

CONSTRUCTION DOCUMENT SET

SHEET NUMBER  
**C-110**

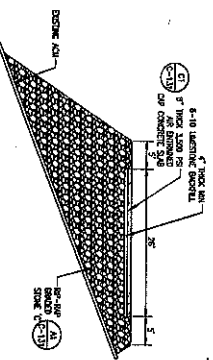
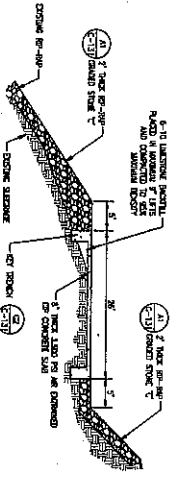
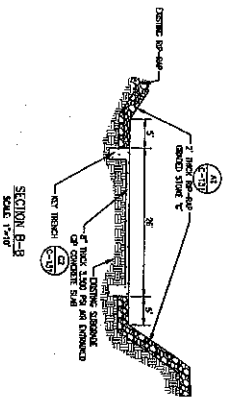
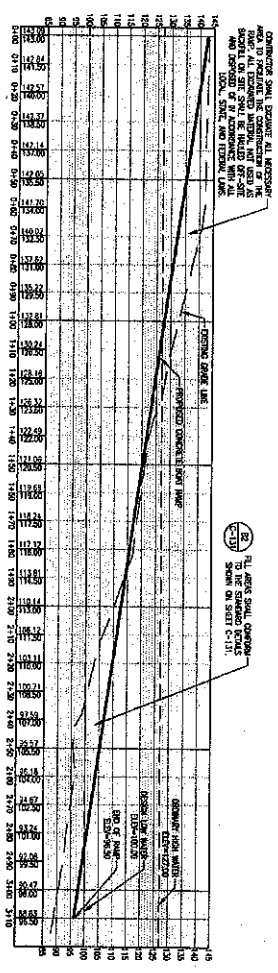
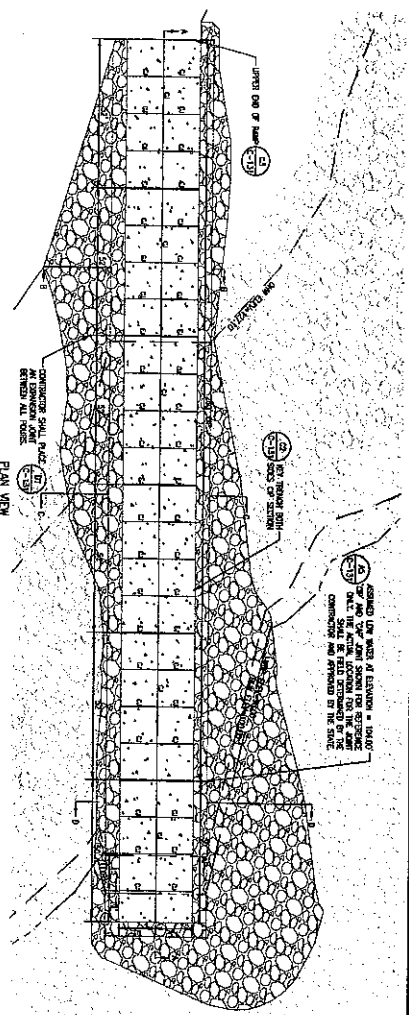


**PRIMARY ACCESS RAMP**  
McCALLIE ACCESS  
DESHA, ARKANSAS

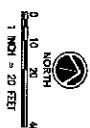
**Pickering**  
Pickering Firm, Inc.  
Faculty Design • Civil Engineering • Surveying •  
Threat Detection • Homeland Security Resources  
100 E. Huntington, Suite 9  
Bentonville, AR 72711  
870.810.7910

PROJECT #:	22594-01
DATE:	JANUARY 10, 2018
DRAWN BY:	PT
DESIGNED BY:	PT
CHECKED BY:	PT


REVISIONS					



- ABBREVIATION LEGEND**
- (A) 4" THICK REINFORCED CONCRETE SLAB
  - (B) 2" THICK REINFORCED CONCRETE SLAB
  - (C) 1" THICK REINFORCED CONCRETE SLAB
  - (D) 6" THICK REINFORCED CONCRETE SLAB
  - (E) 8" THICK REINFORCED CONCRETE SLAB
  - (F) 10" THICK REINFORCED CONCRETE SLAB
  - (G) 12" THICK REINFORCED CONCRETE SLAB
  - (H) 14" THICK REINFORCED CONCRETE SLAB
  - (I) 16" THICK REINFORCED CONCRETE SLAB
  - (J) 18" THICK REINFORCED CONCRETE SLAB
  - (K) 20" THICK REINFORCED CONCRETE SLAB
  - (L) 22" THICK REINFORCED CONCRETE SLAB
  - (M) 24" THICK REINFORCED CONCRETE SLAB
  - (N) 26" THICK REINFORCED CONCRETE SLAB
  - (O) 28" THICK REINFORCED CONCRETE SLAB
  - (P) 30" THICK REINFORCED CONCRETE SLAB
  - (Q) 32" THICK REINFORCED CONCRETE SLAB
  - (R) 34" THICK REINFORCED CONCRETE SLAB
  - (S) 36" THICK REINFORCED CONCRETE SLAB
  - (T) 38" THICK REINFORCED CONCRETE SLAB
  - (U) 40" THICK REINFORCED CONCRETE SLAB
  - (V) 42" THICK REINFORCED CONCRETE SLAB
  - (W) 44" THICK REINFORCED CONCRETE SLAB
  - (X) 46" THICK REINFORCED CONCRETE SLAB
  - (Y) 48" THICK REINFORCED CONCRETE SLAB
  - (Z) 50" THICK REINFORCED CONCRETE SLAB
  - (AA) 52" THICK REINFORCED CONCRETE SLAB
  - (AB) 54" THICK REINFORCED CONCRETE SLAB
  - (AC) 56" THICK REINFORCED CONCRETE SLAB
  - (AD) 58" THICK REINFORCED CONCRETE SLAB
  - (AE) 60" THICK REINFORCED CONCRETE SLAB
  - (AF) 62" THICK REINFORCED CONCRETE SLAB
  - (AG) 64" THICK REINFORCED CONCRETE SLAB
  - (AH) 66" THICK REINFORCED CONCRETE SLAB
  - (AI) 68" THICK REINFORCED CONCRETE SLAB
  - (AJ) 70" THICK REINFORCED CONCRETE SLAB
  - (AK) 72" THICK REINFORCED CONCRETE SLAB
  - (AL) 74" THICK REINFORCED CONCRETE SLAB
  - (AM) 76" THICK REINFORCED CONCRETE SLAB
  - (AN) 78" THICK REINFORCED CONCRETE SLAB
  - (AO) 80" THICK REINFORCED CONCRETE SLAB
  - (AP) 82" THICK REINFORCED CONCRETE SLAB
  - (AQ) 84" THICK REINFORCED CONCRETE SLAB
  - (AR) 86" THICK REINFORCED CONCRETE SLAB
  - (AS) 88" THICK REINFORCED CONCRETE SLAB
  - (AT) 90" THICK REINFORCED CONCRETE SLAB
  - (AU) 92" THICK REINFORCED CONCRETE SLAB
  - (AV) 94" THICK REINFORCED CONCRETE SLAB
  - (AW) 96" THICK REINFORCED CONCRETE SLAB
  - (AX) 98" THICK REINFORCED CONCRETE SLAB
  - (AY) 100" THICK REINFORCED CONCRETE SLAB
  - (AZ) 102" THICK REINFORCED CONCRETE SLAB
  - (BA) 104" THICK REINFORCED CONCRETE SLAB
  - (BB) 106" THICK REINFORCED CONCRETE SLAB
  - (BC) 108" THICK REINFORCED CONCRETE SLAB
  - (BD) 110" THICK REINFORCED CONCRETE SLAB
  - (BE) 112" THICK REINFORCED CONCRETE SLAB
  - (BF) 114" THICK REINFORCED CONCRETE SLAB
  - (BG) 116" THICK REINFORCED CONCRETE SLAB
  - (BH) 118" THICK REINFORCED CONCRETE SLAB
  - (BI) 120" THICK REINFORCED CONCRETE SLAB
  - (BJ) 122" THICK REINFORCED CONCRETE SLAB
  - (BK) 124" THICK REINFORCED CONCRETE SLAB
  - (BL) 126" THICK REINFORCED CONCRETE SLAB
  - (BM) 128" THICK REINFORCED CONCRETE SLAB
  - (BN) 130" THICK REINFORCED CONCRETE SLAB
  - (BO) 132" THICK REINFORCED CONCRETE SLAB
  - (BP) 134" THICK REINFORCED CONCRETE SLAB
  - (BQ) 136" THICK REINFORCED CONCRETE SLAB
  - (BR) 138" THICK REINFORCED CONCRETE SLAB
  - (BS) 140" THICK REINFORCED CONCRETE SLAB
  - (BT) 142" THICK REINFORCED CONCRETE SLAB
  - (BU) 144" THICK REINFORCED CONCRETE SLAB
  - (BV) 146" THICK REINFORCED CONCRETE SLAB
  - (BW) 148" THICK REINFORCED CONCRETE SLAB
  - (BX) 150" THICK REINFORCED CONCRETE SLAB
  - (BY) 152" THICK REINFORCED CONCRETE SLAB
  - (BZ) 154" THICK REINFORCED CONCRETE SLAB
  - (CA) 156" THICK REINFORCED CONCRETE SLAB
  - (CB) 158" THICK REINFORCED CONCRETE SLAB
  - (CC) 160" THICK REINFORCED CONCRETE SLAB
  - (CD) 162" THICK REINFORCED CONCRETE SLAB
  - (CE) 164" THICK REINFORCED CONCRETE SLAB
  - (CF) 166" THICK REINFORCED CONCRETE SLAB
  - (CG) 168" THICK REINFORCED CONCRETE SLAB
  - (CH) 170" THICK REINFORCED CONCRETE SLAB
  - (CI) 172" THICK REINFORCED CONCRETE SLAB
  - (CJ) 174" THICK REINFORCED CONCRETE SLAB
  - (CK) 176" THICK REINFORCED CONCRETE SLAB
  - (CL) 178" THICK REINFORCED CONCRETE SLAB
  - (CM) 180" THICK REINFORCED CONCRETE SLAB
  - (CN) 182" THICK REINFORCED CONCRETE SLAB
  - (CO) 184" THICK REINFORCED CONCRETE SLAB
  - (CP) 186" THICK REINFORCED CONCRETE SLAB
  - (CQ) 188" THICK REINFORCED CONCRETE SLAB
  - (CR) 190" THICK REINFORCED CONCRETE SLAB
  - (CS) 192" THICK REINFORCED CONCRETE SLAB
  - (CT) 194" THICK REINFORCED CONCRETE SLAB
  - (CU) 196" THICK REINFORCED CONCRETE SLAB
  - (CV) 198" THICK REINFORCED CONCRETE SLAB
  - (CW) 200" THICK REINFORCED CONCRETE SLAB
  - (CX) 202" THICK REINFORCED CONCRETE SLAB
  - (CY) 204" THICK REINFORCED CONCRETE SLAB
  - (CZ) 206" THICK REINFORCED CONCRETE SLAB
  - (CA) 208" THICK REINFORCED CONCRETE SLAB
  - (CB) 210" THICK REINFORCED CONCRETE SLAB
  - (CC) 212" THICK REINFORCED CONCRETE SLAB
  - (CD) 214" THICK REINFORCED CONCRETE SLAB
  - (CE) 216" THICK REINFORCED CONCRETE SLAB
  - (CF) 218" THICK REINFORCED CONCRETE SLAB
  - (CG) 220" THICK REINFORCED CONCRETE SLAB
  - (CH) 222" THICK REINFORCED CONCRETE SLAB
  - (CI) 224" THICK REINFORCED CONCRETE SLAB
  - (CJ) 226" THICK REINFORCED CONCRETE SLAB
  - (CK) 228" THICK REINFORCED CONCRETE SLAB
  - (CL) 230" THICK REINFORCED CONCRETE SLAB
  - (CM) 232" THICK REINFORCED CONCRETE SLAB
  - (CN) 234" THICK REINFORCED CONCRETE SLAB
  - (CO) 236" THICK REINFORCED CONCRETE SLAB
  - (CP) 238" THICK REINFORCED CONCRETE SLAB
  - (CQ) 240" THICK REINFORCED CONCRETE SLAB
  - (CR) 242" THICK REINFORCED CONCRETE SLAB
  - (CS) 244" THICK REINFORCED CONCRETE SLAB
  - (CT) 246" THICK REINFORCED CONCRETE SLAB
  - (CU) 248" THICK REINFORCED CONCRETE SLAB
  - (CV) 250" THICK REINFORCED CONCRETE SLAB
  - (CW) 252" THICK REINFORCED CONCRETE SLAB
  - (CX) 254" THICK REINFORCED CONCRETE SLAB
  - (CY) 256" THICK REINFORCED CONCRETE SLAB
  - (CZ) 258" THICK REINFORCED CONCRETE SLAB
  - (CA) 260" THICK REINFORCED CONCRETE SLAB
  - (CB) 262" THICK REINFORCED CONCRETE SLAB
  - (CC) 264" THICK REINFORCED CONCRETE SLAB
  - (CD) 266" THICK REINFORCED CONCRETE SLAB
  - (CE) 268" THICK REINFORCED CONCRETE SLAB
  - (CF) 270" THICK REINFORCED CONCRETE SLAB
  - (CG) 272" THICK REINFORCED CONCRETE SLAB
  - (CH) 274" THICK REINFORCED CONCRETE SLAB
  - (CI) 276" THICK REINFORCED CONCRETE SLAB
  - (CJ) 278" THICK REINFORCED CONCRETE SLAB
  - (CK) 280" THICK REINFORCED CONCRETE SLAB
  - (CL) 282" THICK REINFORCED CONCRETE SLAB
  - (CM) 284" THICK REINFORCED CONCRETE SLAB
  - (CN) 286" THICK REINFORCED CONCRETE SLAB
  - (CO) 288" THICK REINFORCED CONCRETE SLAB
  - (CP) 290" THICK REINFORCED CONCRETE SLAB
  - (CQ) 292" THICK REINFORCED CONCRETE SLAB
  - (CR) 294" THICK REINFORCED CONCRETE SLAB
  - (CS) 296" THICK REINFORCED CONCRETE SLAB
  - (CT) 298" THICK REINFORCED CONCRETE SLAB
  - (CU) 300" THICK REINFORCED CONCRETE SLAB
  - (CV) 302" THICK REINFORCED CONCRETE SLAB
  - (CW) 304" THICK REINFORCED CONCRETE SLAB
  - (CX) 306" THICK REINFORCED CONCRETE SLAB
  - (CY) 308" THICK REINFORCED CONCRETE SLAB
  - (CZ) 310" THICK REINFORCED CONCRETE SLAB



CONSTRUCTION DOCUMENT SET

	<p><b>PRIMARY ACCESS RAMP</b> McCALLIE ACCESS DESHA, ARKANSAS</p>	<p><b>Pickering</b> Pickering Firm, Inc. Facility Design • Civil Engineering • Surveying • Transportation • Natural Water Resources 160 E. Main Street, Suite B Jonesboro, AR 72401 870.610.7916</p>	<p>PROJECT #: 25254.01 DATE: JANUARY 11, 2016 DRAWN BY: PRT DESIGNED BY: PRT CHECKED BY: PRT</p>
<p>SHEET NUMBER: <b>C-130</b></p>	<p>DESCRIPTION: GRADE PLAN AND PROFILE ENCLOSURE 1</p>		



**US Army Corps  
of Engineers**

Vicksburg District  
4155 Clay Street  
Vicksburg, MS 39183-3435  
www.mvk.usace.army.mil

# General Permit

**FILE NO.:** GENERAL PERMIT – 25  
**DATE:** September 30, 2014  
**EXPIRES:** September 30, 2019

**FOR:** THE CONSTRUCTION OF RECREATIONAL BOATING FACILITIES IN WATERS OF THE UNITED STATES AND THE ASSOCIATED DISCHARGE OF DREDGED AND/OR FILL MATERIAL

**WHERE:** REGULATORY JURISDICTION OF THE VICKSBURG DISTRICT IN ARKANSAS, LOUISIANA, AND MISSISSIPPI

**BY WHOM:** DISTRICT ENGINEER, VICKSBURG DISTRICT, ON BEHALF OF THE PUBLIC

The U.S. Army Corps of Engineers, Vicksburg District, is hereby reissuing a Department of the Army General Permit for the construction of recreational boating facilities and the associated discharge of dredged and/or fill material into waters of the United States within the regulatory jurisdiction of the Vicksburg District in the States of Arkansas, Louisiana, and Mississippi. Typical activities include construction of boat ramps, parking areas, access roads, fishing piers, and associated facilities requiring placement of dredged and/or fill material into waters of the United States. A map of the Vicksburg District (enclosure 1) and typical construction drawings (enclosure 2) are enclosed.

This General Permit contains certain limitations intended to protect the environment and natural and cultural resources. Conformance with conditions contained in the General Permit does not necessarily guarantee authorization under this General Permit. In cases where the District Engineer considers it necessary, an application for an individual permit will be required. Construction, dredging, or fill operations not specifically authorized by this General Permit are prohibited unless authorized by a separate permit.

This action is being taken pursuant to Federal regulations printed in the Federal Register on November 13, 1986, concerning permits for activities in waters of the United States. These regulations state the U.S. Army Corps of Engineers' responsibility for regulating structures or work in or affecting waters of the United States under Section 10 of the Rivers and Harbors Act of 1899 (30 Stat. 1151; 33 U.S.C. 403) and Section 404 of the Clean Water Act (33 U.S.C. 1344).

General Permits may be issued for a category or categories of activities when: (1) those activities are substantially similar in nature and cause only minimal individual and cumulative environmental impacts; or (2) the General Permit would result in avoiding unnecessary duplication of the regulatory control exercised by another Federal, State, or local agency, provided it has been determined that the environmental consequences of the action are individually and cumulatively minimal. The final decision regarding a determination that the proposed activities comply with the requirements for issuance of General Permits was made using information which is available for inspection at the offices of the Vicksburg District's Regulatory Branch at 4155 Clay Street, Vicksburg, Mississippi.

In compliance with requirements of Section 401 of the Clean Water Act, the Vicksburg District has obtained water quality certifications (WQCs) from the Arkansas Department of Environmental Quality, the Louisiana Department of Environmental Quality, and the Mississippi Department of Environmental Quality stating that the work authorized by the General Permit will not violate applicable provisions of Sections 301, 302, 306, and 307 of the Act. A copy of the Arkansas, Louisiana, and Mississippi water quality certifications are attached (enclosure 3).

Authorization to conduct work under this General Permit does not negate the responsibility of the applicant to obtain other State or local authorizations or permits required by law for the proposed activity.

**REQUEST FOR AUTHORIZATION UNDER THE GENERAL PERMIT: IN ORDER TO BE AUTHORIZED BY THIS GENERAL PERMIT, PARTIES PROPOSING THE WORK ARE REQUIRED TO SUBMIT TO THE DISTRICT ENGINEER, IN WRITING, THE FOLLOWING INFORMATION IN 8 ½ x 11 INCH FORMAT AT LEAST 60 DAYS PRIOR TO CONDUCTING THE WORK:**

- a. State the number of the General Permit under which the work will be conducted. (General Permit - 25)
- b. A statement that the work will be conducted in compliance with the terms and conditions of the General Permit and will not adversely impact adjoining properties.
- c. Name, mailing address, telephone number, and e-mail address of the party (person/agency) applying for authorization and for the agent (if applicable).
- d. A location map showing the proposed worksite (including latitude and longitude, Section, Township, Range, County or Parish, and State).
- e. A description of the proposed activity and its purpose, including an explanation of the current conditions at the site that need to be corrected/modified/improved and how the proposed activity will meet those needs.



f. A sufficiently labeled drawing of any proposed structures to illustrate elevations (when available), dimensions, total area impacted in acres, and amounts of excavated and fill material in cubic yards.

g. Estimated initiation and completion dates of construction.

h. A delineation of all waters of the United States (WOTUS) within the project area, including special aquatic sites (e.g. wetlands) and other waters of the U.S. such as lakes or ponds, or perennial, intermittent, or ephemeral streams. Wetland delineations must be prepared in accordance with the current method required by the Corps. The applicant may ask the Corps to delineate the special aquatic sites, including wetlands, and other waters on the project site, but there may be a delay, especially if the project site is large or contains many waters of the United States. Furthermore, the application evaluation period will not start until the delineation has been submitted by the applicant or completed by the Corps, as appropriate.

i. An impact table detailing the total impacts in acres (wetland) or linear feet (stream), type of wetland(s) or stream(s) to be impacted, impact activity (discharge of dredged or fill material, conversion, etc.), impact duration (temporary or permanent), and the latitude/longitude for each impact.

[NOTE: An Impact Table template is available for use on the Vicksburg District's Regulatory Web Page]:

<http://www.mvk.usace.army.mil/Missions/Regulatory/Permits.aspx>

j. The application must include a description of best management practices that will be used to minimize movement of disturbed soil(s) from the project site into adjacent areas.

k. For projects that include adverse impacts to waters of the U.S., the complete application must include information on mitigation in all forms (i.e. avoidance, minimization, and compensation) to minimize overall adverse impacts to waters of the U.S. For projects with unavoidable impacts greater than 0.10 acre to wetlands, the complete application must include a conceptual mitigation plan stating whether compensatory mitigation requirements as determined by the Corps will be provided through: (1) purchase of mitigation credits from an approved bank or approved "in lieu fee" provider, or (2) permittee responsible mitigation. If the applicant proposes permittee responsible mitigation, the application will not be considered complete until the Corps received an acceptable permittee responsible mitigation plan.

[NOTE: Information on the Vicksburg District's current mitigation requirements is available on the MVK Regulatory Web Page]:

<http://www.mvk.usace.army.mil/Missions/Regulatory/Mitigation.aspx>

**l. If the proposed activity would occur within 1500 linear feet of a federal flood control levee, the application would include an affirmative statement that the applicant has also submitted a permit application to the appropriate agency that manages the levee (i.e. levee district, board, commission).**

**m. If any Federally-listed, or candidate, threatened or endangered species are near the project area, or if the project area is located in designated critical habitat for a listed species, the application must include the name(s) of those listed species or candidate species. If individuals, evidence of individuals, and/or suitable habitat are present at the project site, the application must describe all measures that will be implemented to avoid impacts to these resources.**

**n. The application must state if there is a known migratory wading bird rookery site or an American bald or golden eagle nest site near the project location. If individuals, evidence of individuals, and/or suitable habitat are present at the project site, the application must describe all measures that will be implemented to avoid impacts to these resources.**

**o. For an activity that may affect a historic property listed on, determined to be eligible for listing on, or potentially eligible for listing on the National Register of Historic Places, the application must state which historic property may be affected by the proposed work or include a vicinity map indicating the location of the historic property.**

**p. If the proposed activity is located within the Coastal Zone area of Louisiana or Mississippi, the complete application would also include an approval (e.g. waiver or coastal use permit) from the coastal zone management agency (see Special Condition 'k.').**

**Upon receipt of this information, the District Engineer will evaluate the proposal and notify the inquiring party, in writing, either that the work will be authorized under the General Permit; will require additional information or will advise the inquiring party that the proposed activity will require an individual permit.**

**Special Conditions:**

**a. The authorized structures shall not extend into the channel of the receiving waterbody so as to interfere with navigation (including recreational boating) or adversely affect the flow-carrying capacity of the receiving waterbody.**

**b. Wetland impacts from the proposed construction and fill activities shall not exceed two acres.**

**c. Adequate best management practices are required. All construction activities shall be performed in a manner that will prevent off-site movement of disturbed soils, minimize increased turbidity of the water in the work area, and**

otherwise avoid adverse effects on water quality and aquatic life, especially during fish spawning seasons. The fill material shall be compacted upon completion of construction. The site shall be revegetated by sod, seed, or another acceptable method, as necessary, to restore cover and prevent erosion. In areas subject to currents, riprap may be used for slope protection.

d. Material used for fill may be obtained from site preparation. Additional fill may be obtained from an upland source and shall be nonpolluting, in conformance with (l.), below. Additional material shall not be obtained from any wetland and/or other waters of the United States (WOTUS) or any area which would affect an adjacent wetland and/or other WOTUS.

e. Fill placed outside of the footprint of the structures authorized by this General Permit should be similar in nature to the existing substrate and shall be confined to the minimum quantity necessary. The parking area shall be the minimum size necessary to accommodate users of the facility. The access road shall be aligned to minimize impacts to WOTUS.

f. The slope of the ramp shall be designed to provide safe launching conditions.

g. Construction and/or maintenance activities should be conducted during drawdown periods of lakes/reservoirs, when practicable, or during low flow periods of free flowing streams.

h. No activity that may adversely impact a site listed in or eligible for listing in the National Register of Historic Places, or a site that has previously been unevaluated, shall be allowed by this General Permit. Additional fill material shall not be taken from a known historical or archaeological site within or outside of regulated areas. If the permittee, during prosecution of activities authorized herein, inadvertently discovers or accidentally destroys a cultural resource such as a cemetery, shipwreck, mound, historic structure, or archaeological site, within the area subject to Department of the Army jurisdiction, they shall cease work in the immediate area and notify the District Engineer within 24 hours. The District Engineer, in consultation with the appropriate State Historic Preservation Officer and the Federally recognized Tribe, will comply with the procedures set forth in 33 CFR 325, Appendix C, paragraph 11 (Historic Properties Discovered During Construction).

i. If damage to a revetment were to occur as a result of activities authorized in accordance with this General Permit, the permittee shall be required to make necessary repairs at their own expense. These repairs must meet specifications designated by the District Engineer.

**j. Activities shall not be authorized for activities proposed on or adjacent to any stream in a component of a National Wild and Scenic Rivers System or in a component of a State Natural and Scenic Rivers System, without the appropriate Federal or State authorization.**

**k. The discharge shall not occur in a Coastal Zone Management area without the appropriate State authorization. The coastal zone approval shall be submitted with the request for authorization under this General Permit. Therefore, in order to be authorized by this General Permit for activities in Hancock County, Mississippi, or St. Tammany Parish, Louisiana, persons planning activities in these coastal areas should first send complete plans to the appropriate state agency at one of the following addresses:**

**Mississippi Department of Marine Resources  
1141 Bayview Avenue  
Suite 101  
Biloxi, Mississippi 39530**

**Louisiana Department of Natural Resources  
Office of Coastal Management  
Post Office Box 44487  
Baton Rouge, Louisiana 70804-4487**

**l. Dredged, excavated, or fill material used for construction shall be nonpolluting material in accordance with the Environmental Protection Agency Guidelines for the Discharge of Dredged or Fill Material found in 40 CFR 230.**

**m. All excavated material not used as backfill shall be placed in a non-jurisdictional area (i.e., upland). If excavated material is to be placed in an upland contained disposal area and return water discharged back into waters of the United States, a separate Department of the Army authorization may be required (See Nationwide Permit No. 16).**

**n. The discharge shall not be located so as to adversely affect a public water supply intake or a national fish hatchery intake.**

**o. The discharge shall not contain unacceptable levels of pathogenic organisms in areas used for activities involving physical contact with the water.**

**p. The discharge shall not occur in areas of concentrated shellfish production.**

**q. No activity shall be authorized under this General Permit that would be likely to directly or indirectly jeopardize the continued existence of a Federally-listed threatened or endangered species or a species proposed for such designation, as identified under the Federal Endangered Species Act (ESA), or that will directly or indirectly destroy or adversely modify the critical habitat of**

such species. No activity shall be authorized under this General Permit which "may affect" a listed species or critical habitat, unless Section 7 consultation addressing the effects of the proposed activity has been completed.

r. The permittee is responsible for obtaining any "take" permits required under the U.S. Fish and Wildlife Service's regulations governing compliance with the Migratory Bird Treaty Act or the Bald and Golden Eagle Protection Act. The permittee shall contact the appropriate local office of the U.S. Fish and Wildlife Service to determine if such "take" permits are required for the activity.

s. No activities shall be performed within 1,500 feet of any known wading bird rookery.

t. The construction activity shall not result in the relocation or blockage of a natural stream or river channel or adversely impact or drain wetlands and/or waters of the United States.

u. No sewage, oil, refuse, or other pollutants shall be discharged into the waterbody.

v. Activities shall not be authorized on a property/area managed or encumbered by a state or federal natural resource agency (e.g. wildlife management areas, national wildlife refuges, national forests, wetland or conservation reserve program properties, etc.) without documented approval (e.g. special use permit, waiver, etc.) from that agency.

w. Authorizations for this General Permit shall not be granted to an applicant who is in noncompliance with a Department of the Army permit until such noncompliance has been resolved.

x. Any conditions on the water quality certifications issued from the State in which the activities are proposed shall be incorporated by reference. Enforcement actions resulting from noncompliance with these conditions may be initiated by the State or the Environmental Protection Agency.

y. Authorized discharges shall not occur in sites that will adversely affect areas supporting tidal waters or tidally-influenced wetlands.

**General Conditions:**

a. You shall maintain the activity authorized by the permit in good condition and in conformance with the terms and conditions of the permit. You are not relieved of this requirement if the permitted activity is abandoned. However, a good faith transfer to a third party in compliance with General Condition b., below, will be acceptable. If you desire to abandon the authorized activity without a good faith transfer, or wish to cease to maintain the authorized activity,

**you must obtain a modification of the authorization from this office, which may require restoration of the area.**

**b. If you sell the property associated with the authorization under this General Permit, you shall notify this office to ensure that the authorization is transferred to the new owner.**

**c. Representatives from this office shall be allowed to inspect the authorized activity at any time deemed necessary to ensure that it is being, or has been, accomplished in accordance with the terms and conditions of the permit.**

**d. This permit does not obviate the need to obtain other Federal, State, or local authorizations required by law.**

**e. This permit does not grant any property rights or exclusive privileges.**

**f. This permit does not authorize any injury to the property or rights of others.**

**g. This permit does not authorize interference with or damages to any existing or proposed Federal project.**

**h. In issuing this permit, the Federal Government does not assume any liability for the following:**

**(1) Damages to the permitted project, or uses thereof, as a result of other permitted or unpermitted activities or from natural causes.**

**(2) Damages to the permitted project or uses thereof as a result of current or future activities undertaken by or on behalf of the United States in the public interest.**

**(3) Damages to persons, property, or to other permitted or unpermitted activities or structures caused by the activity authorized by this permit.**

**(4) Design or construction deficiencies associated with the permitted work.**

**(5) Damage claims associated with any future modification, suspension, or revocation of this permit.**

**i. In issuing individual authorization under this General Permit, the Government will rely on the information and data that the permittee provides in connection with the permit application. If, subsequent to the authorization, such information and data prove to be false, incomplete, or inaccurate, this authorization may be modified, suspended, or revoked, in whole or in part, and/or the Government may, in addition, institute appropriate legal proceedings.**

**j. The permittee shall immediately notify the Corps of any unforeseen activities, including emergency activities, that are directly or indirectly associated with the authorized activity and that may require authorization by a separate Department of the Army permit.**

**k. This General Permit is valid for 5 years. At the end of that time, the cumulative environmental effects of completed work will be reviewed and reissuance of the permit may be considered. However, if unforeseen adverse environmental effects result from the issuance of this General Permit, it may be modified or terminated at any time.**

**i. Authorizations under this General Permit are valid until the General Permit expires. Authorized activities that are under construction, or that are under contract to commence construction, in reliance upon this General Permit, will remain authorized provided the activity is completed within 12 months of the date of expiration.**

**Additional copies of this notice are available upon request from this office. Requests may be addressed to: USACE, Attention: Regulatory Branch, 4155 Clay Street, Vicksburg, Mississippi 39183-3435.**



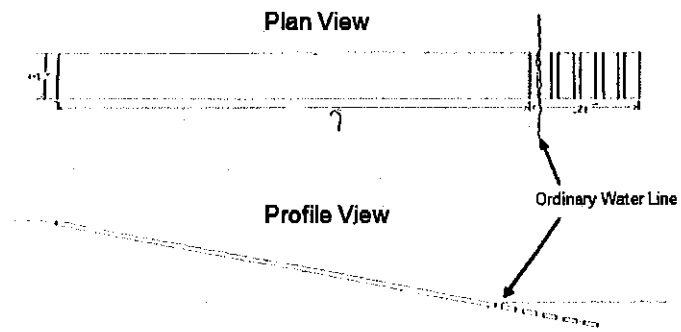
**Michael F. McNair, R.F.  
Chief, Regulatory Branch**

**Enclosures**



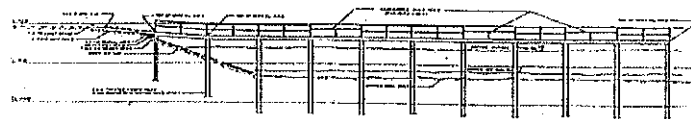


### Typical Boat Ramp Drawings



### Typical Fishing/Boating Pier

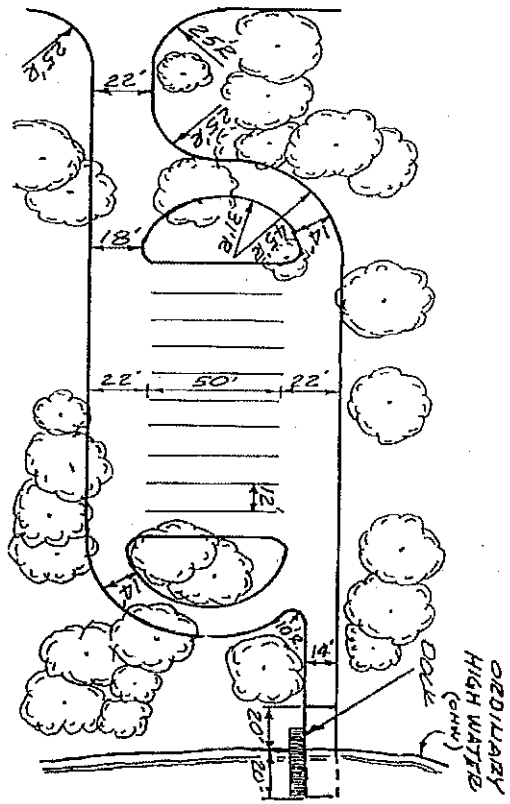
#### Profile View



ENCLOSURE 2

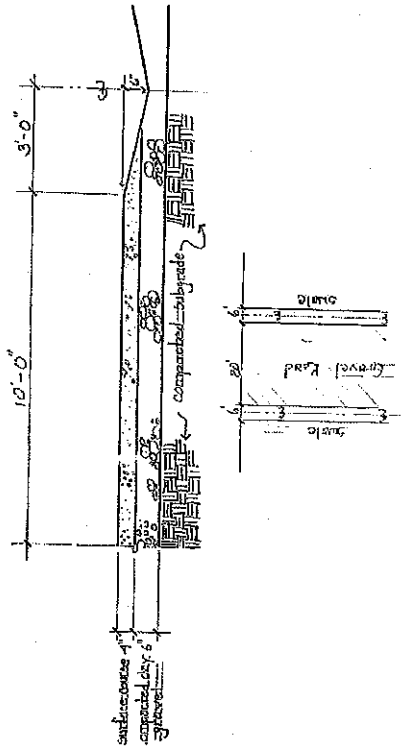
Enclosure 2

Enclosure 2-1



Enclosure 2 Enclosure 2-2

Typical Profile View of Boat Ramp Subgrade Materials



Enclosure 2 Enclosure 2-3

# ADEQ

ARKANSAS  
Department of Environmental Quality

**AUG 12 2014**

Colonel John W. Cross  
U.S. Army Corps of Engineers  
4155 Clay Street  
Vicksburg, MS 39183-3435

RE: Public Notice: Re-issuance of General Permit 25: MVK-2014-459

Dear Colonel Cross:

The Arkansas Department of Environmental Quality ("ADEQ") has completed its review of the above referenced public notice for re-issuance of the U.S. Army Corps of Engineers General Permit 25 for the State of Arkansas.

ADEQ has determined that there is a reasonable assurance that this activity will be conducted in a manner which, according to the Arkansas Pollution Control and Ecology Commission's Regulation No. 2, will not physically alter a significant segment of a waterbody and will not violate the water quality criteria.

Pursuant to §401(a)(1) of the Clean Water Act, the ADEQ hereby issues water quality certification for this project contingent upon the following conditions:

- 1) Individual Water Quality Certification requests must be submitted to ADEQ for any activity impacting Extraordinary Resource Waters, Ecologically Sensitive Waters, and Natural and Scenic Waters as identified in Regulation # 2.
- 2) Individual water quality certification requests must be submitted to ADEQ for any activity located on tributaries within 1/10 mile of an Extraordinary Resource Waters, Ecologically Sensitive Waters, and Natural and Scenic Waters as identified in Arkansas Pollution Control and Ecology Commission's Regulation No. 2.
- 3) Individual water quality certification request must be submitted to ADEQ for any activity impacting a waterbody listed as impaired for turbidity on the Arkansas 303(d) List.
- 4) The applicant shall contact ADEQ for a Short Term Activity Authorization needs determination for activities that have the potential to violate water quality criteria.
- 5) The applicant shall comply with NPDES Storm Water Program requirements.

Please contact Mark Hathcote of the Water Division at (501) 682-0028 if you have any questions regarding this certification.

Sincerely,



Ellen Carpenter  
Chief, Water Division

cc: Ms. Jennifer Mallard, Chief, Permits Section, [Jennifer.A.Mallard@usace.army.mil](mailto:Jennifer.A.Mallard@usace.army.mil)  
Ms. Amiee Parker, Permits Section, [Amiee.D.Parker@usace.army.mil](mailto:Amiee.D.Parker@usace.army.mil)  
Ms. Wanda Boyd, Region VI, Environmental Protection Agency, [Boyd.Wanda@epa.gov](mailto:Boyd.Wanda@epa.gov)



STATE OF MISSISSIPPI  
PHIL BRYANT  
GOVERNOR  
MISSISSIPPI DEPARTMENT OF ENVIRONMENTAL QUALITY  
TRUDY D. FISHER, EXECUTIVE DIRECTOR

August 12, 2014

Certified Mail No.7011 1570 0002 1131 2882

John W. Cross  
Colonel, U.S. Army Corps of Engineers  
District Commander  
Vicksburg District  
4155 East Clay Street  
Vicksburg, Mississippi 39183-3435

Dear Colonel Cross:

Re: US Army COE,  
Vicksburg District  
General Permit 25  
Warren County  
WQC No. WQC2014031

Pursuant to Section 401 of the Federal Water Pollution Control Act (33 U. S. C. 1251, 1341), the Office of Pollution Control (OPC) issues this Certification, after public notice and opportunity for public hearing, to U.S. Army Corps of Engineers, Vicksburg District, an applicant for a Federal License or permit to conduct the following activity:

US Army COE, Vicksburg District, General Permit 25: Reissuance of a Department of the Army General Permit for construction of recreational boating facilities and the associated discharge of dredged and/or fill material in waters of the United States within the regulatory jurisdiction of the Vicksburg District. Typical activities would include construction of boat ramps, parking areas, access roads, fishing piers, and associated facilities requiring work and placement of dredged and/or fill material into waters of the United States. This proposed General Permit contains certain limitations intended to protect the environment and natural and cultural resources. Conformance with conditions contained in the General Permit does not necessarily guarantee authorization under this General Permit. In cases where the District Engineer considers it necessary, an application will be required for an individual permit. Construction, dredging, or fill operations not

08-21-14 15:17 RCVD

specifically covered by this General Permit would be prohibited unless authorized by a separate permit. General Permits may be issued for a category or categories of activities when: (1) those activities are substantially similar in nature and cause only minimal individual and cumulative environmental impacts; or (2) the General Permit would result in avoiding unnecessary duplication of the regulatory control exercised by another Federal, State, or local agency, provided it has been determined that the environmental consequences of the actions are individually and cumulatively minimal.

The following must be provided by the applicant in writing in request for authorization under the General Permit:

- a. State the number of the General Permit under which the work is to be conducted. (General Permit-19)
- b. Statement that the work will be conducted in compliance with the terms and conditions of the General Permit and will not adversely impact adjoining properties.
- c. Name, mailing address, telephone number, and email address of the party (person/company/agency) applying for authorization and for the agent (if applicable).
- d. A location map showing the proposed worksite (including latitude, longitude, section, Township, Range, County or Parish, and State).
- e. A description of the present conditions at the project site(s), including substrate type, vegetation type and coverage, existing structures, etc.
- f. A description of the proposed activity, its purpose, and intended use.
- g. A sufficiently labeled set of drawings of the proposed structures, excavations, and/or fills illustrating elevations (when available), dimensions, total area impacted in acres, and the quality and type(s) of excavated and/or fill material that would be used in cubic yards.
- h. The estimated starting and completion dates of construction.
- i. A delineation of wetlands, other special aquatic sites, and other waters (e.g. perennial, intermittent, ephemeral streams) in the work area. Wetland delineations would be prepared in accordance with current method required by the Corps. The applicant may ask the Corps to delineate the special aquatic sites, including wetlands, and other waters on the project site, but this may delay preparation/receipt of a complete application, especially if the

project site is large or contains many waters of the United States. Furthermore, the application evaluation period would not start until the delineation has been submitted by the applicant or completed by the corps, as appropriate.

j. If the proposed activity would occur within the Coastal Zone area of Louisiana or Mississippi, the complete application would also include an approval (e.g. waiver or coastal use permit) from the coastal zone management agency (see Special Condition 'j.').

k. If the proposed work would occur within 1500 linear feet of a federal flood control levee, the application would include an affirmative statement that the applicant has also submitted a permit application to the appropriate agency that manages the levee (i.e. levee district, board, commission).

l. For projects that would include adverse impacts to waters of the U.S., the complete application would include information on mitigation in all forms (i.e. avoidance, minimization, and compensation) to minimize overall adverse impacts to waters of the U.S. For projects with unavoidable impacts greater than 0.10 acre to wetlands, the complete application would include a conceptual mitigation plan stating whether compensatory mitigation requirements as determined by the Corps would be provided through: (1) purchase of mitigation credits from an approved mitigation bank or approved "in lieu fee" provider, or (2) permittee responsible mitigation. If the applicant proposes permittee responsible mitigation, the application would not be considered complete until the Corps received an acceptable permittee responsible mitigation plan.

[NOTE: Information on the Vicksburg District's current mitigation requirements is available on the MVK Regulatory Web Page]:  
<http://www.mvk.usace.army.mil/Missions/Regulatory/Mitigation.aspx>

m. If any Federally-listed threatened or endangered species or candidate species are in the vicinity of the project area, or if the project area is located in designated critical habitat for a listed species, the application would include the name(s) of those listed species or candidate species. If individuals, evidence of individuals, and/or suitable habitat within an area designated as critical habitat are present at the project site, the application would describe all measures that would be implemented avoid impacts to those resources.

n. The application would state if there is a known migratory wading bird rookery site or an American bald or golden eagle nest site in the vicinity of the project location. If individuals or evidence of individuals are present at



the project site for any of these resources, the application would describe all measures that would be implemented to avoid impacts to these resources.

Special Conditions:

a. The authorized structures would not extend into the channel of the receiving waterbody so as to interfere with navigation (including recreational boating) or adversely affect the flow-carrying capacity of a river or stream. The parking area would be the minimum size necessary to accommodate users of the facility and would be surfaced with porous material such as gravel, crushed stone, shell, etc. The access road would be the minimum distance necessary to provide access to the boat ramp and parking area.

b. The slope of the ramp would be designed to provide safe launching conditions.

c. Construction and /or maintenance activities would be conducted during drawdown periods of lakes/reservoirs or during low flow periods of free-flowing streams.

d. Wetland impacts from the proposed construction and fill activities would not exceed two (2) acres.

e. Material used for fill could be obtained from an upland source and must be nonpolluting, in conformance with 'p.', below. The fill would not be obtained from an offsite wetland or in a manner that would adversely affect an offsite wetland.

f. No activity which may adversely impact a site listed or eligible for listing on National Register of Historic Places, or a site that has been previously been unevaluated, would be allowed by the General Permit. Additional fill material would not be taken from a known historical or archaeological site within or outside of regulated areas. If the permittee, during prosecution of work authorized herein, inadvertently discovers or accidentally destroys a cultural resource such as a cemetery, shipwreck, mound, historic structure, or archaeological site, within the area subject to Department of the Army jurisdiction, they would cease work in the immediate area and notify the District Engineer within 24 hours. The District Engineer, in consultation with the appropriate State Historic Preservation Officer and the Federally recognized Tribe, would comply with the procedures set forth in 33 CFR 325, Appendix C, paragraph 11 (Historic Properties Discovered During Construction).

g. No activity would be authorized under this General Permit which would be likely to directly or indirectly jeopardize the continued existence of a

Federally listed threatened or endangered species or a species proposed for such designation, as identified under the Federal Endangered Species Act (ESA), or which would directly or indirectly destroy or adversely modify the critical habitat of such species. No activity shall be authorized under this General Permit which "may affect" a listed species or critical habitat, unless ESA Section 7 consultation addressing the effects of the proposed activity has been completed.

h. The permittee is responsible for obtaining any "take" permits required under the U.S. Fish and Wildlife Service's regulations governing compliance with the Migratory Bird Treaty Act or the Bald and Golden Eagle Protection Act. The permittee should contact the appropriate local office of the U.S. Fish and Wildlife Service to determine if such "take" permits are required for a particular activity.

i. If authorized activities are conducted over revetted areas of a federal navigation project and damage to the revetment occurs as a result of the authorized activity, the permittee would be required to make necessary repairs at their own expense. These repairs would meet specifications designated by the District Engineer.

j. Persons conducting work under this General Permit would be required to comply with applicable navigational regulations. If the display of navigational aids, such as lights and signals on permitted structures and/or vessels during and after construction activities, is not otherwise required by law, they may be required by the U.S. Coast Guard. These and other mandatory navigational aids may be required to be installed and maintained at the expense of the permittee.

k. Activities would not be authorized at locations on or adjacent to a component of the National Wild and Scenic River System, or a State Natural and Scenic River System, without the appropriate Federal or State authorization.

l. The discharge would not occur in a Coastal Zone Management area without the appropriate State authorization. The coastal zone approval would be submitted with the request for authorization. The coastal zone approval would be submitted with the request for authorization under the General Permit. In order to be authorized by the General Permit for work in Hancock County, Mississippi, or St. Tammany Parish, Louisiana, persons proposing work in these coastal areas would be required to send complete plans to the appropriate state agency at one of the following address:

Mississippi Department of Marine Resources  
1141 Bayview Avenue

Suite 101  
Biloxi, Mississippi 39530

Louisiana Department of Natural Resources  
Office of Coastal Management  
Post Office Box 44487  
Baton Rouge, Louisiana 70804-4487

m. The activities and/or discharge of dredged/fill material authorized by this General Permit would not adversely affect tidal waters, including tidal wetlands.

n. Projects located on property encumbered by an Natural Resources Conservation Services (NRCS) Wetlands Reserve Program (WRP) easement would not be authorized without written release/approval from the NRCS. Under such situations, the application would not be considered complete until the Corps is provided written documentation of release/approval from the agreement by the NRCS.

o. Activities would not be authorized on a property/area managed by a state or federal natural resources agency (e.g. wildlife management areas, national wildlife refuges, national forests, etc.) without documented approval (e.g. special use permit, waiver, etc.) by the managing agency.

p. Dredged, excavated, or fill material used for construction would be nonpolluting material, in accordance with the Environmental Protection Agency Guidelines for the Discharge of Dredged or Fill Material found in 40 CFR 230.

q. All construction activities would be performed in a manner that would minimize increased turbidity in waters within and adjacent to the work area to avoid adverse impacts to water quality and aquatic life, especially during fish spawning season. Adequate best management practices would be required.

r. Impacted stream embankments would be stabilized or restored after completion of construction activities.

s. All material excavated on site and not used to construct the facility would be placed in an upland or other non-jurisdictional area. Return water from excavated material placed at such disposal site would not be allowed to reenter the waterway or adjacent wetlands.

t. The authorized discharge would not be located so as to adversely affect a public water supply intake or a national fish hatchery intake.

- u. The discharge would not contain unacceptable levels of pathogenic organisms in areas used for activities involving physical contact with the water.
- v. The discharge would not occur in areas of concentrated shellfish production.
- w. No sewage, oil, refuse, or other pollutants would be discharged into the waterbody.
- x. Authorizations for this General Permit would not be granted to an applicant who is in noncompliance with a Department of the Army permit until such noncompliance has been resolved.
- y. Any conditions on the water quality certifications issued from the State in which the work is proposed would be incorporated by reference. Enforcement actions resulting from noncompliance with these conditions may be initiated by the State of the Environmental Protection Agency.

General Conditions:

- a. The permittee would maintain the activity authorized by the permit in good condition and in conformance with the terms and conditions of the permit. The permittee would not be relieved of this requirement if the permitted activity is abandoned. However, a good faith transfer to a third party in compliance with General Condition 'b.', below, would be acceptable. If the permittee desires to abandon the authorized without a good faith transfer, or wishes to cease to maintain the authorized activity, a modification of the authorization must be obtained from this office, which may require restoration of the area.
- b. If the permittee sells the property associated with the authorization under this General Permit, the permittee would notify this office to ensure that the authorization is transferred to the new owner.
- c. Representatives from this office would be allowed to inspect the authorized activity at any time deemed necessary to ensure that it is being, or has been, accomplished in accordance with the terms and conditions of the permit.
- d. This permit would not obviate the need to obtain other Federal, State, or local authorizations required by law.
- e. This permit would not grant any property rights or exclusive privileges.

f. This permit would not authorize any injury to the property or rights of others.

g. This permit would not authorize interference with any existing or proposed Federal project.

h. In issuing this permit, the Federal Government would not assume any liability for the following:

(1) Damages to the permitted project, or uses thereof, as a result of other permitted or unpermitted activities or from natural causes.

(2) Damages to the permitted project, or uses thereof, as a result of current or future activities undertaken by, or on behalf of, the United States in the public interest.

(3) Damages to persons, property, or to other permitted or unpermitted activities or structures caused by the activity authorized by this permit.

(4) Design or construction deficiencies associated with the permitted work.

(5) Damage claims associated with any future modification, suspension, or revocation of this permit.

i. In issuing individual authorization under this General Permit, the Government would rely on the information and data which the permittee provides in connection with the permit application. If, subsequent to the authorization, such information and data prove to be false, incomplete, or inaccurate, the authorization may be modified, suspended or revoked, in whole or in part, and/or the Government may, in addition, institute appropriate legal proceedings.

j. This General Permit would be valid for 5 years from the date of issuance.

[General Permit - 25, WQC2014031].

The Office of Pollution Control certifies that the above-described activity will be in compliance with the applicable provisions of Sections 301, 302, 303, 306, and 307 of the Federal Water Pollution Control Act and Section 49-17-29 of the Mississippi Code of 1972, if the applicant complies with the following conditions:

1. The Department of Environmental Quality (MDEQ) shall be provided a copy of the final permit and associated enclosures and attachments.
2. The permittee obtaining authorization under General Permit-25 shall obtain appropriate wastewater permits and/or approvals for the proposed activity prior to the commencement of construction activities.
3. All fill material and excavation areas shall have side slopes of at least 3:1 (horizontal:vertical) and shall be immediately seeded, stabilized and maintained.
4. Appropriate best management practices (BMPs) shall be properly installed and maintained to prevent the movement of sediment off-site and into adjacent drainage areas. Special care shall be taken prior to and during construction to prevent the movement of sediment into adjacent avoided wetland areas. In the event of any BMP failure, corrective actions shall be taken immediately.
5. Prior to the start of construction activities, coverage under a Stormwater Construction General NPDES Permit shall be obtained. No construction activities shall begin until such approvals are obtained.
6. All stream impacts (including streams identified as ephemeral by the U.S. Army Corps of Engineers and described as non-relatively permanent waters) shall be mitigated in kind with stream mitigation elements. In the event that stream mitigation is not available and alternate mitigation proposals are provided, a pre-construction notification shall be provided to MDEQ and 10 working days shall be allowed to provide comments.
7. A pre-construction notification shall be provided to MDEQ for projects that include channel work within waterways found on the latest version of the State of Mississippi's Section 303(d) List of Impaired Water Bodies for sediment or biological impairment or waterways with a completed Total Maximum Daily Load (TMDL) for sediment or biological impairment. This notification shall include the following:
  - a. Justification of why the impacts cannot be avoided;
  - b. Proposed best management practices that would minimize the impacts to receiving sensitive waters; and

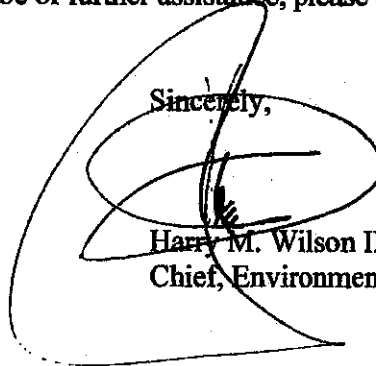
John W. Cross  
Page 10 of 10  
August 12, 2014

- c. Compensatory mitigation primarily along the same reach of stream or on another impaired stream within the same drainage basin.
8. Turbidity outside the limits of a 750-foot mixing zone shall not exceed the ambient turbidity by more than 50 Nephelometric Turbidity Units.
  9. No sewage, oil, refuse, or other pollutants shall be discharged into the watercourse.

The Office of Pollution Control also certifies that there are no limitations under Section 302 nor standards under Sections 306 and 307 of the Federal Water Pollution Control Act which are applicable to the applicant's above-described activity.

This certification is valid for the project as proposed. Any deviations without proper modifications and/or approvals may result in a violation of the 401 Water Quality Certification. If we can be of further assistance, please contact us.

Sincerely,



Harry M. Wilson III, P.E., DEE  
Chief, Environmental Permits Division

HMW: AL

cc: Ms. Amiee Parker, U.S. Army Corps of Engineers, Vicksburg District  
Ms. Willa Brantley, Department of Marine Resources  
Mr. David Felder, U.S. Fish and Wildlife Service  
Mr. Andy Sanderson, Mississippi Wildlife Fisheries and Parks  
Ms. Calista Mills, Environmental Protection Agency

Enclosure 2

49772 WQC2014031

**CERTIFICATION OF COMPLIANCE  
WITH DEPARTMENT OF THE ARMY PERMIT**

Regional General Permit Number: NWP 25  
Identification Number: MVK-2017-112  
Name of Permittee: Mr. Michael Cantrell  
Arkansas Game and Fish Commission  
Issued Date: 05/02/2017  
Evaluator Name: Ms. Jennifer Brown  
Expiration Date: 09/30/2019  
Compliance Location: North of Arkansas City, Desha County,  
Arkansas; Along the Mississippi River;  
Access from Levee Road 43 to 335;  
Approximate Coordinates: Site 1  
33.655112, -91.212201; Site 2:  
33.655035, -91.209259

Upon completion of the activity authorized by this permit, sign this certification and return it to the following address:

USACE, Vicksburg District  
ATTN: Regulatory Branch  
4155 Clay Street  
Vicksburg, Mississippi 39183-3435

Please note that your permitted activity is subject to a compliance inspection by an Army Corps of Engineers representative. If you fail to comply with this permit, you are subject to permit modification, suspension, or revocation.

I hereby certify that the work authorized by the above-referenced permit has been completed in accordance with the terms and conditions of the said permit including any required mitigation.

Date work was completed: \_\_\_\_\_

\_\_\_\_\_  
Signature of Permittee

\_\_\_\_\_  
Date Signed



NOTIFICATION OF ADMINISTRATIVE APPEAL OPTIONS AND PROCEEDS AND  
REQUEST FOR APPEAL

Applicant: Mr. Michael Cantrell, AGFC	File Number: MVK-2017-112	Date: 2 MAY 2018
Attached is:		See Section below
<input type="checkbox"/>	INITIAL PROFFERED PERMIT (Standard Permit or Letter of permission)	A
<input type="checkbox"/>	PROFFERED PERMIT (Standard Permit or Letter of permission)	B
<input type="checkbox"/>	PERMIT DENIAL	C
<input type="checkbox"/>	APPROVED JURISDICTIONAL DETERMINATION	D
<input checked="" type="checkbox"/>	PRELIMINARY JURISDICTIONAL DETERMINATION	E

**SECTION I -** The following identifies your rights and options regarding an administrative appeal of the above decision. Additional information may be found at <http://www.usace.army.mil/Missions/CivilWorks/RegulatoryProgramandPermits/appeals.aspx> or Corps regulations at 33 CFR Part 331.

**A: INITIAL PROFFERED PERMIT: You may accept or object to the permit.**

- **ACCEPT:** If you received a Standard Permit, you may sign the permit document and return it to the district engineer for final authorization. If you received a Letter of Permission (LOP), you may accept the LOP and your work is authorized. Your signature on the Standard Permit or acceptance of the LOP means that you accept the permit in its entirety, and waive all rights to appeal the permit, including its terms and conditions, and approved jurisdictional determinations associated with the permit.
- **OBJECT:** If you object to the permit (Standard or LOP) because of certain terms and conditions therein, you may request that the permit be modified accordingly. You must complete Section II of this form and return the form to the district engineer. Your objections must be received by the district engineer within 60 days of the date of this notice, or you will forfeit your right to appeal the permit in the future. Upon receipt of your letter, the district engineer will evaluate your objections and may: (a) modify the permit to address all of your concerns, (b) modify the permit to address some of your objections, or (c) not modify the permit having determined that the permit should be issued as previously written. After evaluating your objections, the district engineer will send you a proffered permit for your reconsideration, as indicated in Section B below.

**B: PROFFERED PERMIT: You may accept or appeal the permit**

- **ACCEPT:** If you received a Standard Permit, you may sign the permit document and return it to the district engineer for final authorization. If you received a Letter of Permission (LOP), you may accept the LOP and your work is authorized. Your signature on the Standard Permit or acceptance of the LOP means that you accept the permit in its entirety, and waive all rights to appeal the permit, including its terms and conditions, and approved jurisdictional determinations associated with the permit.
- **APPEAL:** If you choose to decline the proffered permit (Standard or LOP) because of certain terms and conditions therein, you may appeal the declined permit under the Corps of Engineers Administrative Appeal Process by completing Section II of this form and sending the form to the division engineer. This form must be received by the division engineer within 60 days of the date of this notice.

**C: PERMIT DENIAL: You may appeal the denial of a permit under the Corps of Engineers Administrative Appeal Process by completing Section II of this form and sending the form to the division engineer. This form must be received by the division engineer within 60 days of the date of this notice.**

**D: APPROVED JURISDICTIONAL DETERMINATION: You may accept or appeal the approved JD or provide new information.**

- **ACCEPT:** You do not need to notify the Corps to accept an approved JD. Failure to notify the Corps within 60 days of the date of this notice, means that you accept the approved JD in its entirety, and waive all rights to appeal the approved JD.
- **APPEAL:** If you disagree with the approved JD, you may appeal the approved JD under the Corps of Engineers Administrative Appeal Process by completing Section II of this form and sending the form to the division engineer. This form must be received by the division engineer within 60 days of the date of this notice.

**E: PRELIMINARY JURISDICTIONAL DETERMINATION: You do not need to respond to the Corps regarding the preliminary JD. The Preliminary JD is not appealable. If you wish, you may request an approved JD (which may be appealed), by contacting the Corps district for further instruction. Also you may provide new information for further consideration by the Corps to reevaluate the JD.**

**SECTION II: REQUEST FOR APPEAL or OBJECTIONS TO AN INITIAL PROFFERED PERMIT**

**REASONS FOR APPEAL OR OBJECTIONS:** (Describe your reasons for appealing the decision or your objections to an initial proffered permit in clear concise statements. You may attach additional information to this form to clarify where your reasons or objections are addressed in the administrative record.)

**ADDITIONAL INFORMATION:** The appeal is limited to a review of the administrative record, the Corps memorandum for the record of the appeal conference or meeting, and any supplemental information that the review officer has determined is needed to clarify the administrative record. Neither the appellant nor the Corps may add new information or analyses to the record. However, you may provide additional information to clarify the location of information that is already in the administrative record.

**POINT OF CONTACT FOR QUESTIONS OR INFORMATION**

If you have questions regarding this decision and/or the appeal process you may contact:  
Ms. Jennifer Brown, Project Manager  
U.S. Army Corps of Engineers  
Regulatory Branch  
4155 Clay Street  
Vicksburg, MS 39183-3435  
601-631-5147

If you only have questions regarding the appeal process you may also contact:  
Administrative Appeals Review Officer  
Mississippi Valley Division  
U.S. Army Corps of Engineers  
1400 Walnut Street  
Vicksburg, MS 39181-0080  
601-634-5820

**RIGHT OF ENTRY:** Your signature below grants the right of entry to Corps of Engineers personnel, and any government consultants, to conduct investigations of the project site during the course of the appeal process. You will be provided a 15 day notice of any site investigation, and will have the opportunity to participate in all site investigations.

Signature of appellant or agent.	Date:	Telephone number:
----------------------------------	-------	-------------------

## ARDOT ENVIRONMENTAL IMPACTS ASSESSMENT FORM

ARDOT Job Number GF0270 FAP Number \_\_\_\_\_

Job Title McCallie Boat Ramps and Pkg. Lot (Mississippi River) (S)

Environmental Impacts	None	Minor	Significant	Comments
Air Quality	X			
Construction Impacts		X		Temporary
Cultural Resources	X			
Economic	X			
Endangered Species	X			
Energy Resources	X			
Environmental Justice/Title VI	X			
Fish and Wildlife	X			
Floodplains	X			
Forest Service Property	X			
Hazardous Materials/Landfills	X			
Land Use Impacts	X			
Migratory Birds	X			
Navigation/Coast Guard	X			
Noise Levels	X			
Prime Farmland	X			
Protected Waters	X			
Public Recreation Lands	X			
Public Water Supply/WHPA	X			
Relocates	X			
Section 4(f)/6(f)	X			
Social	X			
Underground Storage Tanks	X			
Visual Impacts	X			
Stream Impacts		X		Temporary during construction
Water Quality		X		Temporary during construction
Wetlands	X			
Wildlife Refuges	X			

Section 401 Water Quality Certification Required?     N      
 Short-term Activity Authorization Required?     N      
 Section 404 Permit Required?     Y     Type General Permit - 25

Remarks: \_\_\_\_\_

Signature of Evaluator *Mary J. Pearson* Date June 12, 2018