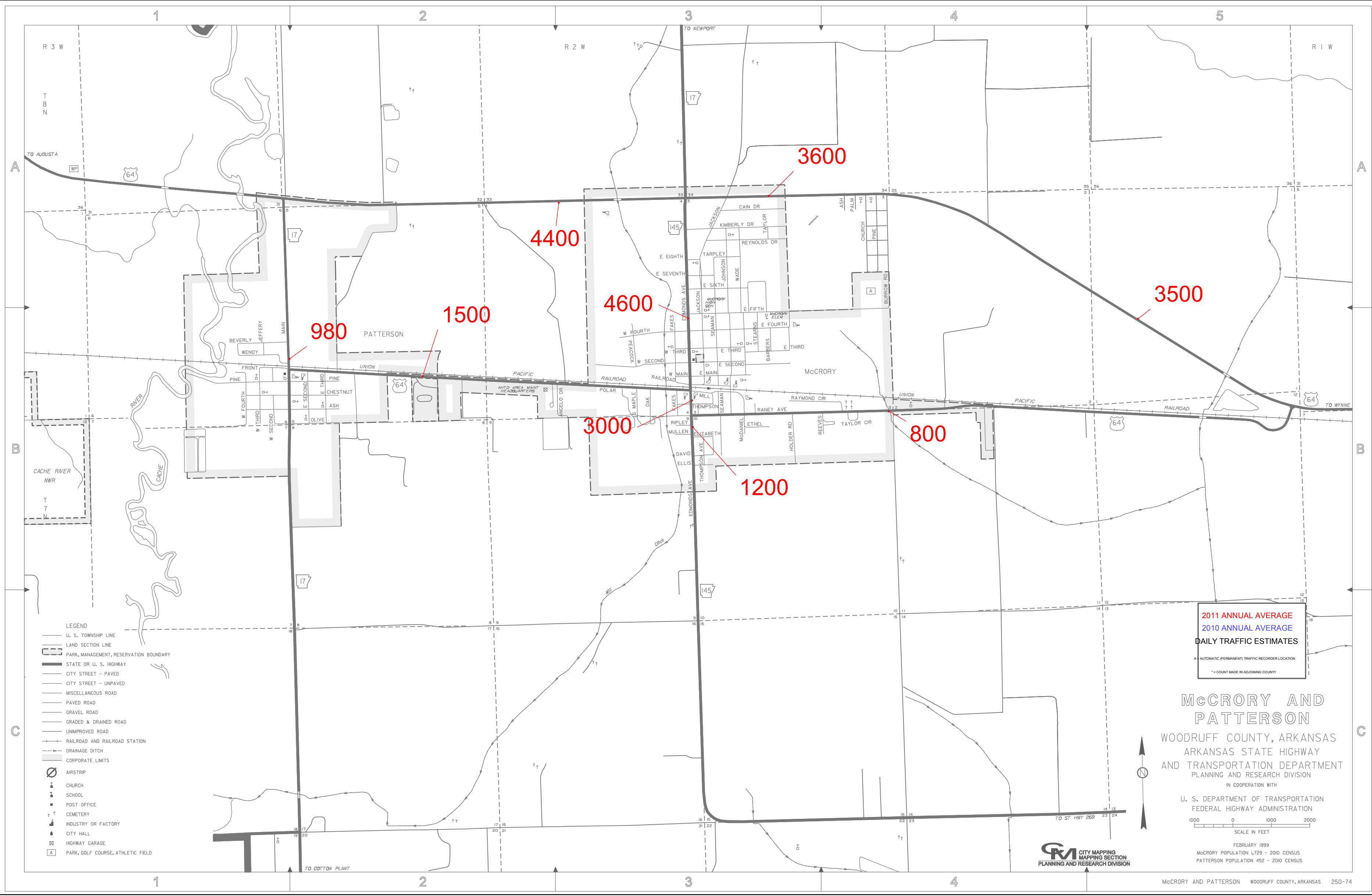


**INDEX**

- ANGELO DR B-3
- ASH A-4
- BARBERS B-3
- BEVERLY B-1
- BURROW RD A-4
- CAIN DR A-3
- CHESTNUT B-2
- CHURCH A-4
- DAVID B-3
- E EIGHTH B-3
- FIFTH B-3
- FOURTH B-3
- MAIN B-3
- SECOND B-2
- SEVENTH A-3
- SIXTH B-3
- THIRD B-2
- E THIRD B-3
- EDMONDS AVE B-3
- EDMONDS AVE B-3
- ELIZABETH B-3
- ELLIS B-3
- ETHEL B-3
- FRONT B-1
- HOLDER RD B-3
- JACKSON A-3
- JEFFERY B-1
- JOHNSON A-3
- KIMBERLY DR A-3
- MAIN B-1
- MCCORMICK B-3
- MILL B-3
- MULLEN B-3
- OAK B-3
- OLIVE B-2
- PALM A-4
- PEACOCK B-3
- PINE A-4
- PINE B-1
- PINE B-2
- POLAR B-3
- RAILROAD B-3
- RANEY AVE B-3
- RAYMOND CIR B-4
- REEVES B-3
- REYNOLDS DR B-3
- RIPLEY B-3
- S MAPLE B-3
- SEAMAN B-3
- SEARNS B-3
- TARPLEY B-3
- TAYLOR A-3
- TAYLOR CIR B-3
- THOMPSON B-3
- THOMPSON AVE B-3
- W FOURTH B-3
- W MAIN B-3
- W SECOND B-3
- W THIRD B-1
- W THIRD B-3
- WADE A-3
- WENDY B-1



- LEGEND**
- U. S. TOWNSHIP LINE
  - LAND SECTION LINE
  - PARK, MANAGEMENT, RESERVATION BOUNDARY
  - STATE OR U. S. HIGHWAY
  - CITY STREET - PAVED
  - CITY STREET - UNPAVED
  - MISCELLANEOUS ROAD
  - PAVED ROAD
  - GRAVEL ROAD
  - GRADED & DRAINED ROAD
  - UNIMPROVED ROAD
  - RAILROAD AND RAILROAD STATION
  - DRAINAGE DITCH
  - CORPORATE LIMITS
  - AIRSTRIP
  - CHURCH
  - SCHOOL
  - POST OFFICE
  - CEMETERY
  - INDUSTRY OR FACTORY
  - CITY HALL
  - HIGHWAY GARAGE
  - PARK, GOLF COURSE, ATHLETIC FIELD

2011 ANNUAL AVERAGE  
 2010 ANNUAL AVERAGE  
 DAILY TRAFFIC ESTIMATES

A AUTOMATIC PERMANENT TRAFFIC RECORDER LOCATION  
 \* COUNTY MADE IN ADJACENT COUNTY

**McCRORY AND PATTERSON**  
 WOODRUFF COUNTY, ARKANSAS  
 ARKANSAS STATE HIGHWAY  
 AND TRANSPORTATION DEPARTMENT  
 PLANNING AND RESEARCH DIVISION

IN COOPERATION WITH  
 U. S. DEPARTMENT OF TRANSPORTATION  
 FEDERAL HIGHWAY ADMINISTRATION

FEBRUARY 1999  
 McCRORY POPULATION 1,729 - 2010 CENSUS  
 PATTERSON POPULATION 452 - 2010 CENSUS

SCALE IN FEET  
 1000 0 1000 2000

