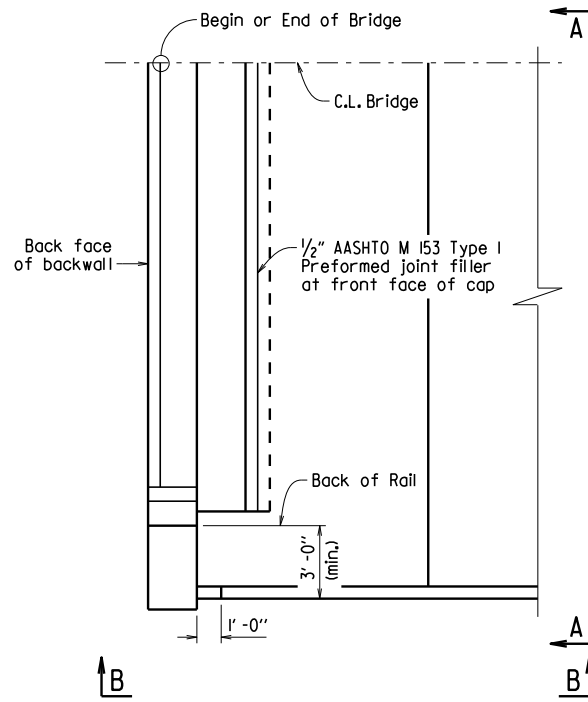


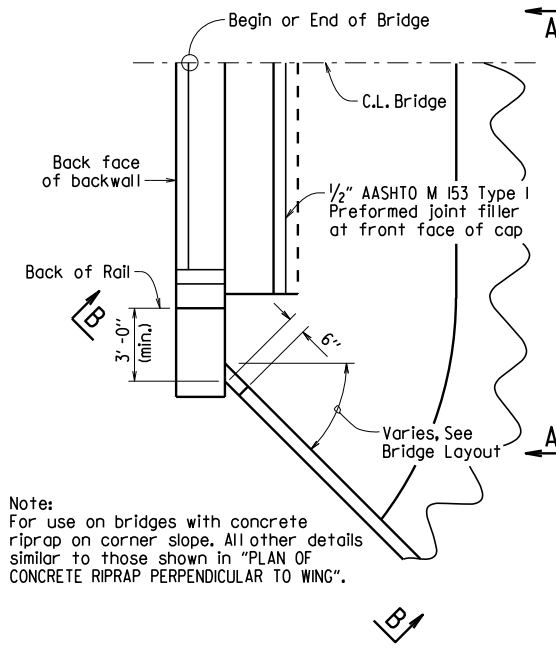
| DATE REVISED | DATE FILMED | DATE REVISED | DATE FILMED | FED. ROAD DIST. NO. | STATE | FED. AID PROJ. NO. | SHEET NO. | TOTAL SHEETS |
|--------------|-------------|--------------|-------------|---------------------|-------|--------------------|-----------------------|--------------|
| | | | | 6 | ARK. | | | |
| JOB NO. | | | | | | | CONCRETE RIPRAP 55002 | |

Note:
Sloped surfaces of concrete riprap to be marked off into blocks (construction joints optional) with an approved grooving tool, spacing the grooved lines about 5' apart.



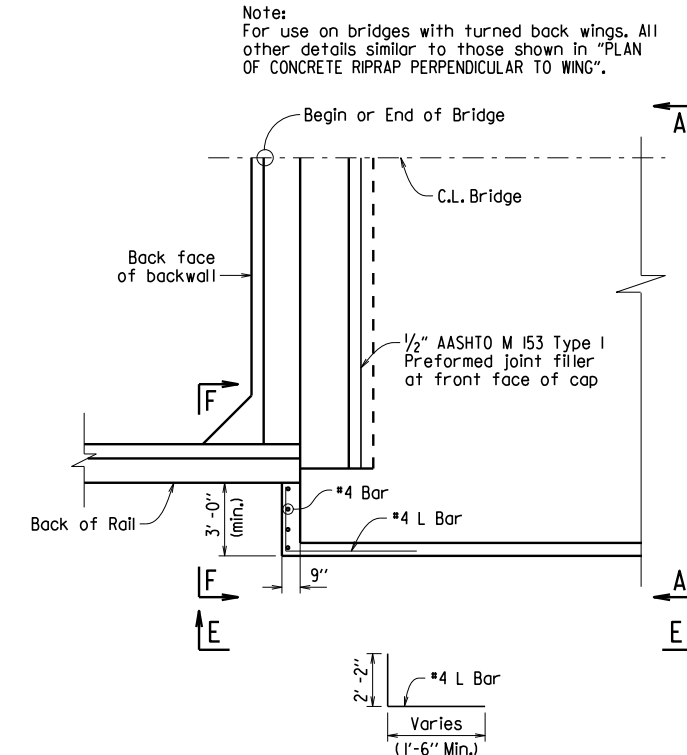
PLAN OF CONCRETE RIPRAP PERPENDICULAR TO WING

1/4" = 1'-0"



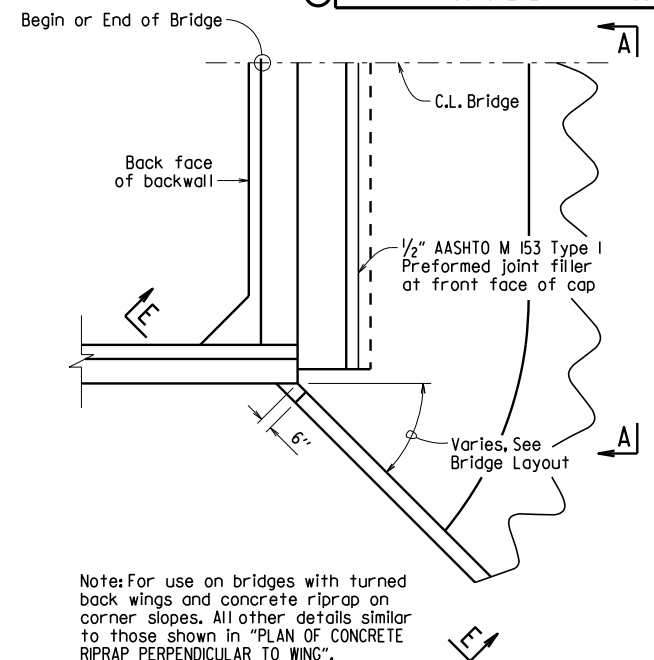
PLAN OF CONCRETE RIPRAP AT ANGLE TO WING

1/4" = 1'-0"



PLAN OF CONCRETE RIPRAP PERPENDICULAR TO TURNED BACK WING

1/4" = 1'-0"



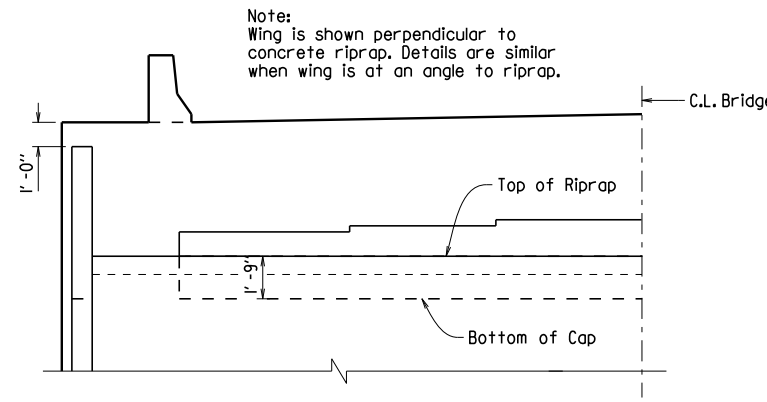
PLAN OF CONCRETE RIPRAP AT ANGLE FROM TURNED BACK WING

1/4" = 1'-0"

Note:
For use on bridges with concrete riprap on corner slope. All other details similar to those shown in "PLAN OF CONCRETE RIPRAP PERPENDICULAR TO WING".

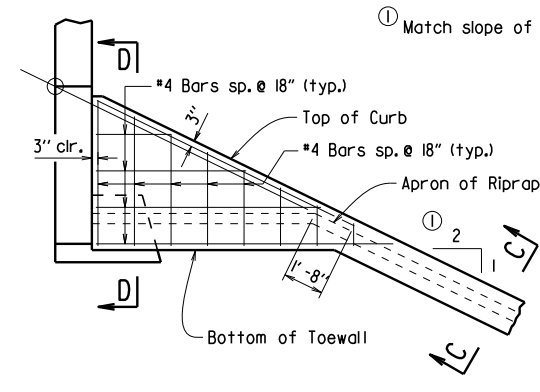
Note:
For use on bridges with turned back wings. All other details similar to those shown in "PLAN OF CONCRETE RIPRAP PERPENDICULAR TO WING".

Note: For use on bridges with turned back wings and concrete riprap on corner slopes. All other details similar to those shown in "PLAN OF CONCRETE RIPRAP PERPENDICULAR TO WING".



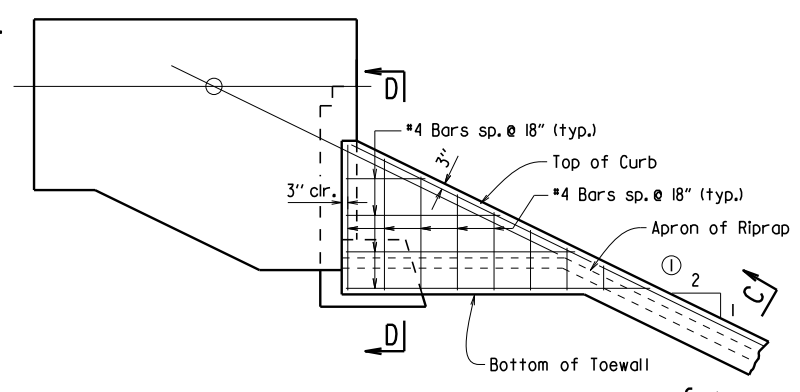
VIEW A-A

1/4" = 1'-0"



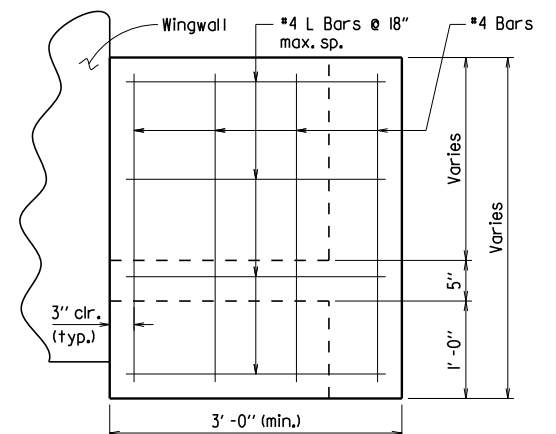
VIEW B-B

1/4" = 1'-0"



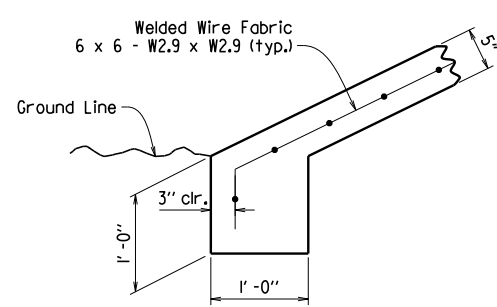
VIEW E-E

1/4" = 1'-0"



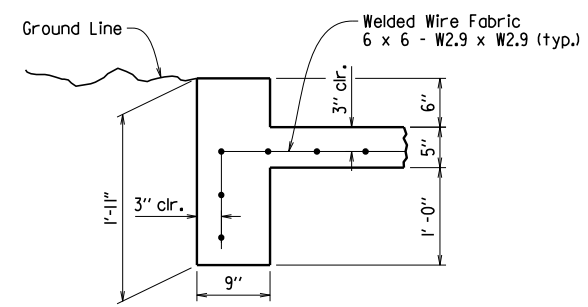
VIEW F-F

1" = 1'-0"



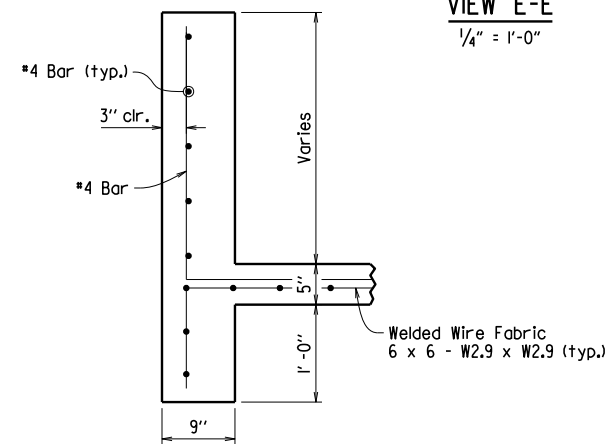
TOE OF CONCRETE RIPRAP

1" = 1'-0"



SECTION C-C

1" = 1'-0"



SECTION D-D

1" = 1'-0"

GENERAL NOTES
All concrete shall be Class A with a minimum compressive strength, f'c = 2,100 psi.
Welded wire fabric shall conform to AASHTO M55 or M221.

STANDARD DETAILS FOR CONCRETE RIPRAP
ARKANSAS STATE HIGHWAY COMMISSION
LITTLE ROCK, ARK.

DRAWN BY: ACP DATE: 2/27/2014 FILENAME: b55002.dgn
CHECKED BY: BEF DATE: 2/27/2014 SCALE: AS SHOWN
DESIGNED BY: Std. DATE: ---

DRAWING NO. 55002