



June 15, 2020

RE: Historic Bridges M3187 and M3817
Job Number 101054
Hwy 230 Strs. & Apprs.
Craighead and Lawrence Counties
Historic Bridge Marketing Request

To Whom It May Concern:

The Arkansas Department of Transportation (ARDOT) is planning to replace Bridge Number M3187 (East Cache River Bridge - Bono) in Craighead County and Bridge Number M3817 (West Fork Cache River Bridge) in Lawrence County on Highway 230. These bridges were determined eligible to the National Register of Historic Places (NRHP) through consultation with the State Historic Preservation Officer's staff. A location map and further information about the bridge is enclosed.

The Fixing America's Surface Transportation (FAST) Act, 23 USC § 144 (g)(5) states: "Any State which proposes to demolish a historic bridge for a replacement project ... shall first make the bridge available for donation to a State, locality, or responsible private entity..." As part of the mitigation process, the ARDOT is offering to donate Bridge Numbers M3187 and M3817 to any government or entity that demonstrates a willingness to accept title for, relocate for use at another site, preserve the historic features of, and assume the financial responsibility for the continued maintenance on either one or both structures.

Normally, the ARDOT, through the Federal Highway Administration (FHWA), can reimburse costs associated with preservation up to the demolition estimate expense. However, the reimbursement funds allocated to these bridges will be exhausted during the dismantling and relocation process.

If you are interested in acquiring one or both of these bridges, please respond with a letter of interest within 45 days from the date of this letter. For further information, contact Nikki Senn at (501) 569-2979 or Nikki.Senn@ardot.gov.

Sincerely,



John Fleming
Division Head
Environmental Division

Enclosures

JF:NS:cb

c: Assistant Chief Engineer - Planning
Bridge Division
District 10 Engineer



Figure 1: ARDOT Bridge Number M3187

ARDOT Bridge Number M3187, on State Highway 230, was determined eligible for inclusion in the National Register of Historic Places in 2017. The bridge displays the Parker pony truss design. The truss span is approximately 100 feet in length and 24 feet wide.

Bridge Number M3187 was a “salvage” truss relocated to its current location over the East Cache River in 1968 replacing a timber trestle bridge. The bridge was likely constructed in the 1930s. The original build date and builder remain unknown. No other history for the bridge, including original location, has been found. During the 1960s and 1970s, the ARDOT often relocated and reused trusses. This bridge illustrates the versatility and portability of the pony truss.

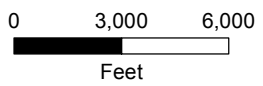
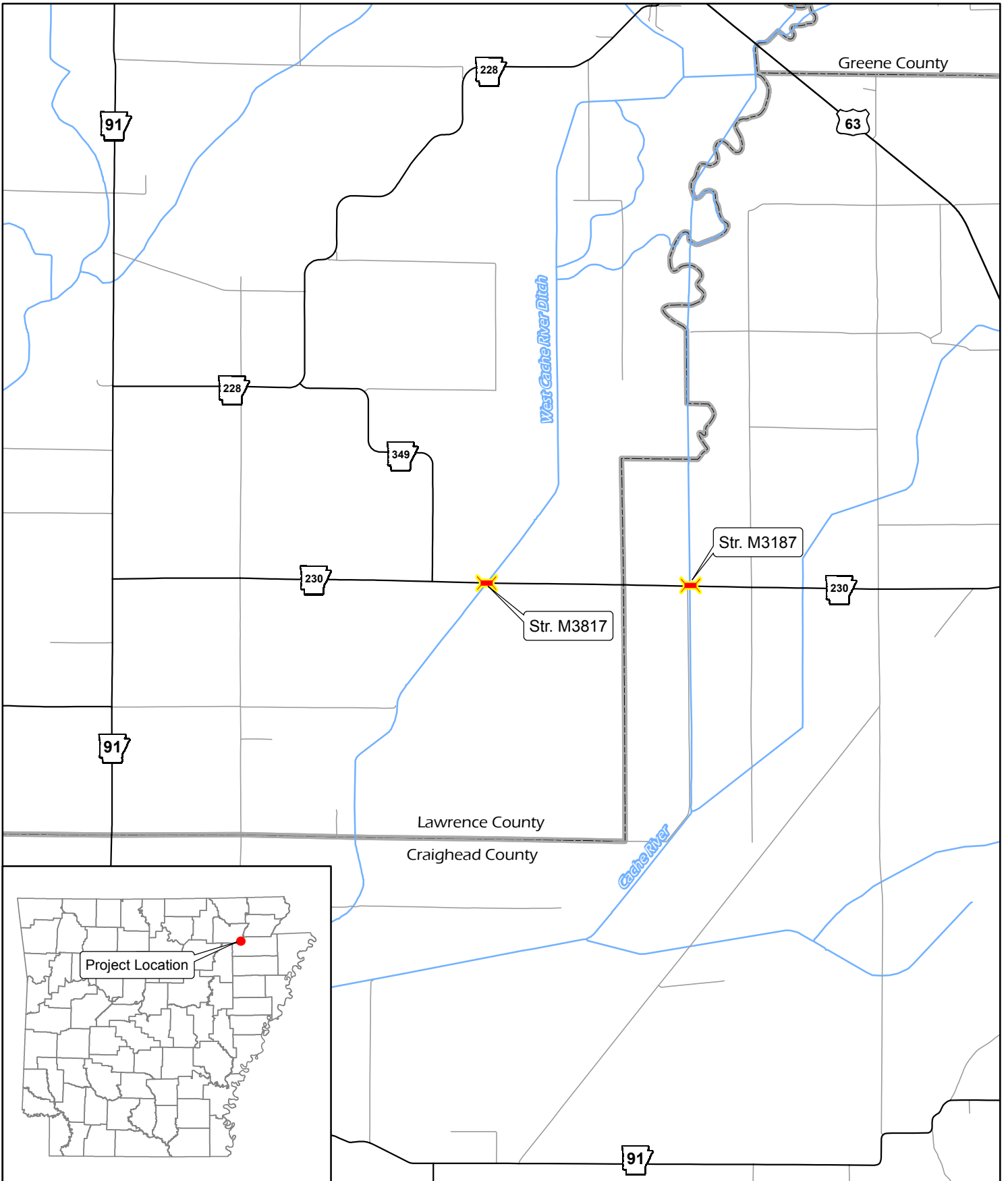
Bridge Number M3187 is one of 10 bridges displaying the Parker pony truss design still in use on the highway system in Arkansas.



Figure 2: ARDOT Bridge Number M3817

ARDOT Bridge Number M3817, on State Highway 230, was determined eligible for inclusion in the National Register of Historic Places in 2020. The truss span is 82 feet long and 24 feet wide, and it was likely built using the Standard Plan for an 80' Low Truss Span (Drawing Number 2445).

The bridge was likely constructed in the 1930s and moved to its current location over the West Fork of the Cache River in 1974-75. The bridge is one of 10 pony trusses with the Parker design still in service; these trusses are associated with the Arkansas Highway and Transportation Department Era (1923-1939) context. No other history for the bridge, including original location, has been found. The bridge exhibits the rivet connections typical of an early Twentieth Century bridge. During the 1960s and 1970s, the ARDOT often relocated and reused trusses. This bridge illustrates the versatility and portability of the pony truss.



ARDOT - Environmental GIS - Dudley
June 4, 2020

Project Location
Craighead & Lawrence Counties

