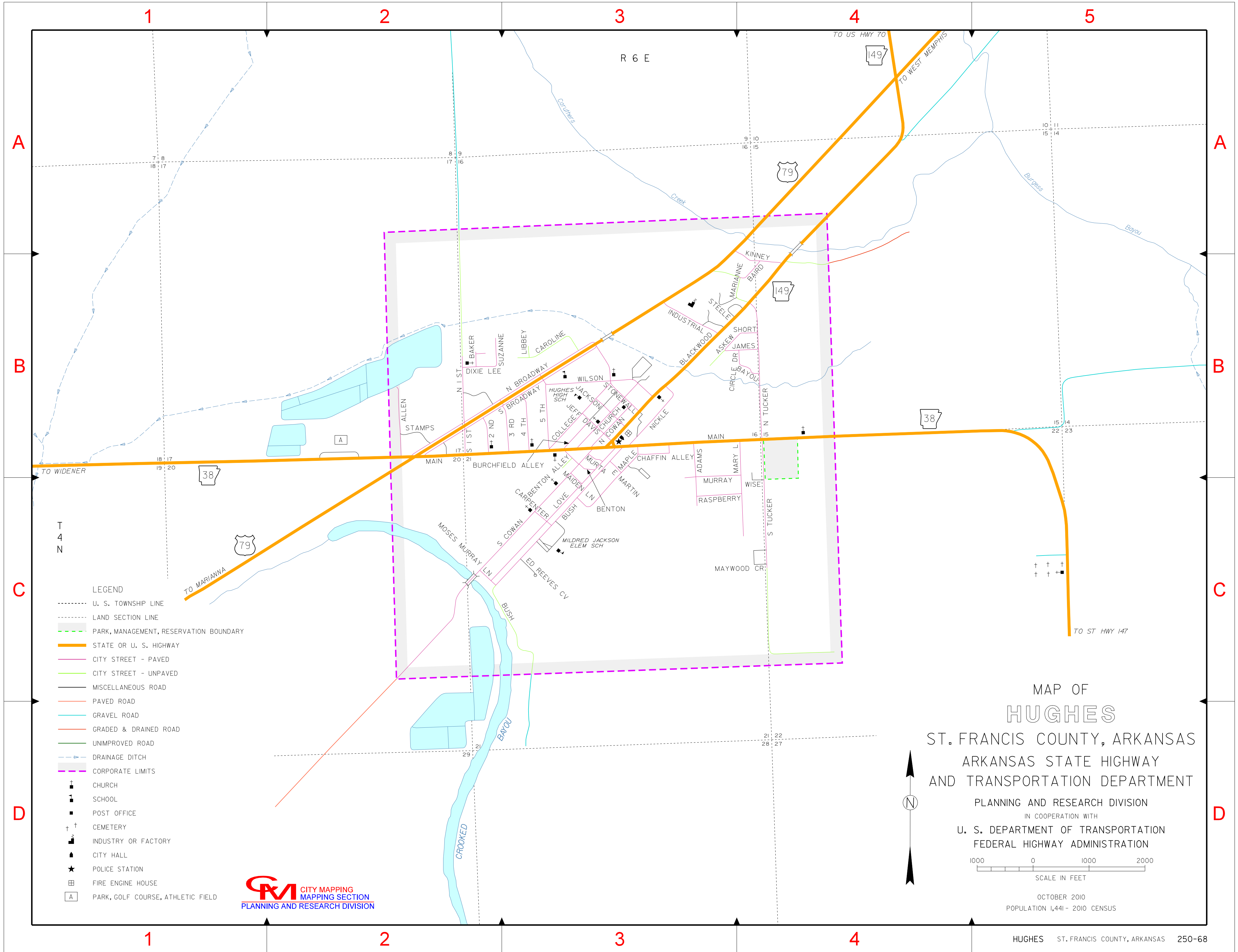


INDEX

- 2 ND
- 3 RD
- 4 TH
- 5 TH
- ADAMS
- ALLEN
- ASKEW
- BAIRD
- BAKER
- BAYOU
- BENTON
- BENTON ALLEY
- BLACKWOOD
- BURCHFIELD ALLEY
- BUSH
- CAROLINE
- CARPENTER
- CHAFFIN ALLEY
- CHURCH
- CIRCLE DR
- COLLEGE
- DIXIE LEE
- E MARTIN
- ED REEVES CV
- INDUSTRIAL
- JACKSON
- JAMES
- JEFF DAVIS
- KINNEY
- LIBBEY
- LOVE
- MAIDEN LN
- MAIN
- MAIN
- MAPLE
- MARIANNE
- MARY L
- MAYWOOD CR
- MOSES MURRAY LN
- MURRAY
- MURTA
- N 1 ST
- N BROADWAY
- N COWAN
- N TUCKER
- NICKLE
- RASPBERRY
- S 1 ST
- S BROADWAY
- S COWAN
- S TUCKER
- SHORT
- STAMPS
- STEELE
- STONEWALL
- SUZANNE
- WILSON
- WISE



- LEGEND**
- U. S. TOWNSHIP LINE
 - LAND SECTION LINE
 - - - - - PARK, MANAGEMENT, RESERVATION BOUNDARY
 - STATE OR U. S. HIGHWAY
 - CITY STREET - PAVED
 - CITY STREET - UNPAVED
 - MISCELLANEOUS ROAD
 - PAVED ROAD
 - GRAVEL ROAD
 - GRADED & DRAINED ROAD
 - UNIMPROVED ROAD
 - - - - - DRAINAGE DITCH
 - - - - - CORPORATE LIMITS
 - † CHURCH
 - ⌘ SCHOOL
 - POST OFFICE
 - † † CEMETERY
 - INDUSTRY OR FACTORY
 - ▲ CITY HALL
 - ★ POLICE STATION
 - ⊞ FIRE ENGINE HOUSE
 - ⊞ PARK, GOLF COURSE, ATHLETIC FIELD

CMI CITY MAPPING
MAPPING SECTION
PLANNING AND RESEARCH DIVISION

MAP OF
HUGHES
ST. FRANCIS COUNTY, ARKANSAS
ARKANSAS STATE HIGHWAY
AND TRANSPORTATION DEPARTMENT
PLANNING AND RESEARCH DIVISION
IN COOPERATION WITH
U. S. DEPARTMENT OF TRANSPORTATION
FEDERAL HIGHWAY ADMINISTRATION

1000 0 1000 2000
SCALE IN FEET

OCTOBER 2010
POPULATION 1,441 - 2010 CENSUS