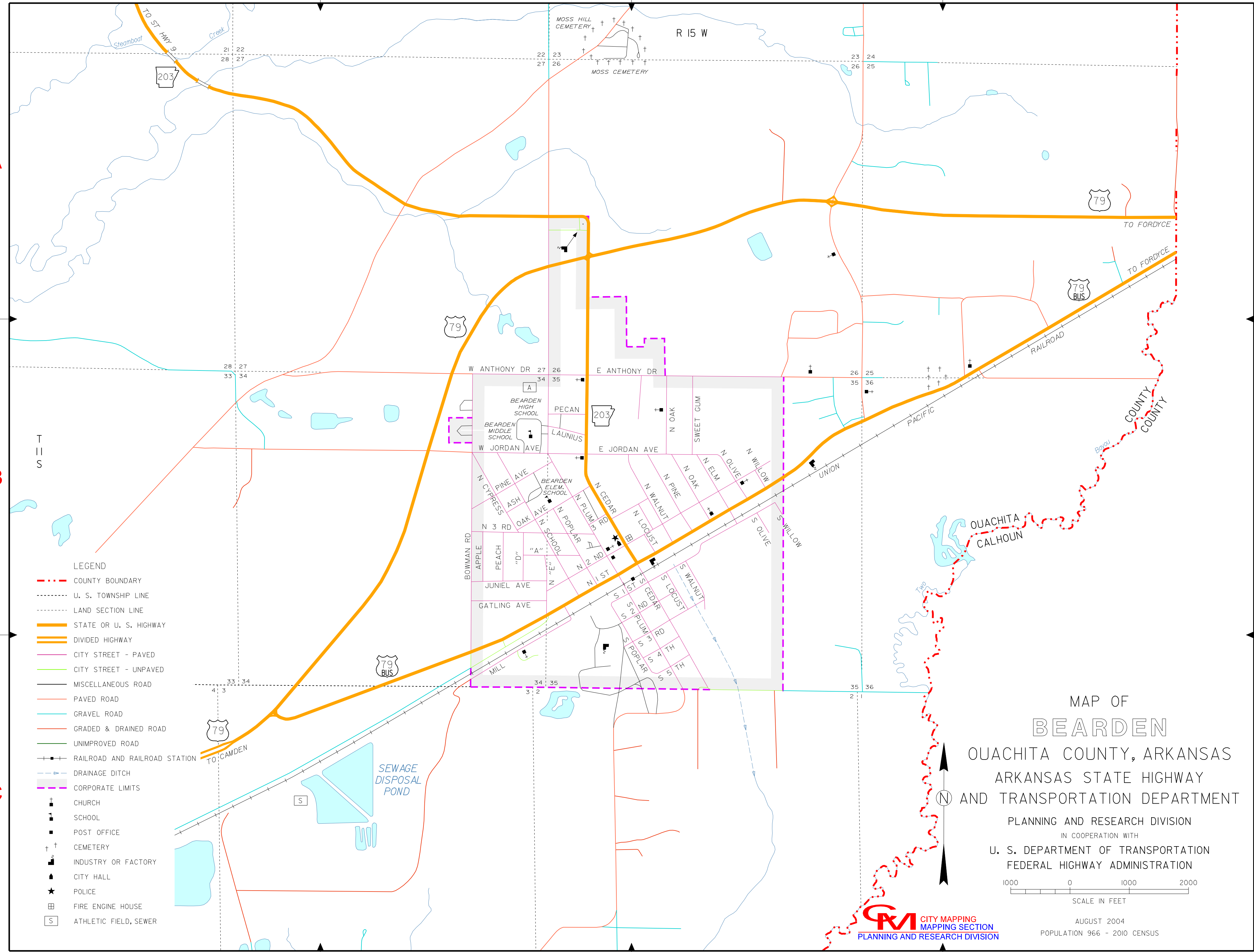


INDEX

"A"	B-2
"D"	B-2
3 RD	B-2
APPLE	B-2
ASH	B-2
E ANTHONY DR	B-2
E JORDAN AVE	B-2
GATLING AVE	B-2
JUNIEL AVE	B-2
LAUNIUS	B-2
MILL	C-2
N "E"	B-2
N 1 ST	B-2
N 2 ND	B-2
N 3 RD	B-2
N CEDAR	B-2
N CYPRESS	B-2
N ELM	B-3
N LOCUST	B-3
N OAK	B-3
N OLIVE	B-3
N PINE	B-3
N PLUM	B-2
N POPLAR	B-2
N SCHOOL	B-2
N WALNUT	B-3
N WILLOW	B-3
OAK AVE	B-2
PEACH	B-2
PECAN	B-2
PINE AVE	B-2
S 1 ST	B-2
S 2 ND	B-3
S 3 RD	C-3
S 4 TH	C-3
S 5 TH	C-3
S CEDAR	B-3
S LOCUST	B-3
S OLIVE	B-3
S PLUM	B-3
S POPLAR	C-3
S WALNUT	B-3
S WILLOW	B-3
SWEET GUM	B-3
W ANTHONY DR	B-2
W JORDAN AVE	B-2



- LEGEND**
- - - COUNTY BOUNDARY
 - - - - - U. S. TOWNSHIP LINE
 - - - - - LAND SECTION LINE
 - = STATE OR U. S. HIGHWAY
 - = DIVIDED HIGHWAY
 - CITY STREET - PAVED
 - CITY STREET - UNPAVED
 - MISCELLANEOUS ROAD
 - PAVED ROAD
 - GRAVEL ROAD
 - GRADED & DRAINED ROAD
 - UNIMPROVED ROAD
 - RAILROAD AND RAILROAD STATION
 - DRAINAGE DITCH
 - CORPORATE LIMITS
 - + CHURCH
 - 1 SCHOOL
 - POST OFFICE
 - + + CEMETERY
 - INDUSTRY OR FACTORY
 - ▲ CITY HALL
 - ★ POLICE
 - FIRE ENGINE HOUSE
 - S ATHLETIC FIELD, SEWER

MAP OF
BEARDEN
 OUACHITA COUNTY, ARKANSAS
 ARKANSAS STATE HIGHWAY
 AND TRANSPORTATION DEPARTMENT
 PLANNING AND RESEARCH DIVISION
 IN COOPERATION WITH
 U. S. DEPARTMENT OF TRANSPORTATION
 FEDERAL HIGHWAY ADMINISTRATION

1000 0 1000 2000
 SCALE IN FEET

AUGUST 2004
 POPULATION 1990 - 2000 CENSUS

CITY MAPPING
 MAPPING SECTION
 PLANNING AND RESEARCH DIVISION