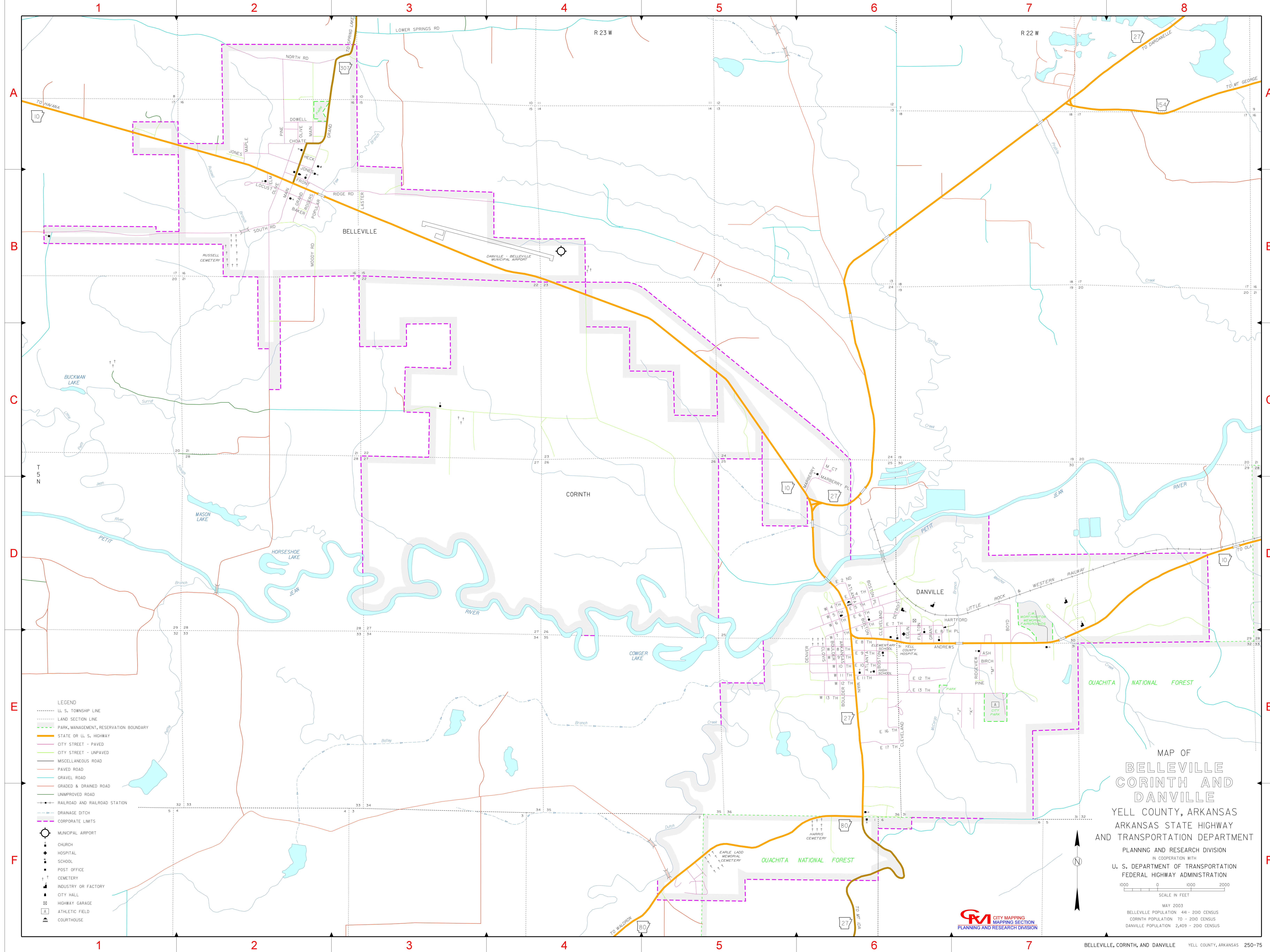


1	2	3	4	5	6	7	8
A	B	C	D	E	F		
ANDREWS	ARKANSAS	ASH	ATLANTA	BAKER	BIRCH	BOSTON	BOULDER
BOYD	CHOATE	CLEVELAND	CLOVIS	DEWEY	DETROIT	DOWELL	E
F	FRONT	FULTON	GRAND	GRANT	HARTFORD	HECK	JONES
LASTER	LOCUST	MAIN	MAPLE	MOODY	NORTH	OLIVE	PINE
POPULAR	RIDGE	RIDGEVIEW	ROGERS	SOUTH	W 4 TH	W 5 TH	W 6 TH
W 7 TH	W 8 TH	W 9 TH	W 10 TH	W 11 TH	W 12 TH	W 13 TH	



- LEGEND**
- U. S. TOWNSHIP LINE
 - LAND SECTION LINE
 - PARK, MANAGEMENT, RESERVATION BOUNDARY
 - STATE OR U. S. HIGHWAY
 - CITY STREET - PAVED
 - CITY STREET - UNPAVED
 - MISCELLANEOUS ROAD
 - PAVED ROAD
 - GRAVEL ROAD
 - GRADED & DRAINED ROAD
 - UNIMPROVED ROAD
 - RAILROAD AND RAILROAD STATION
 - DRAINAGE DITCH
 - CORPORATE LIMITS
 - MUNICIPAL AIRPORT
 - ⊕ CHURCH
 - ⊕ HOSPITAL
 - ⊕ SCHOOL
 - ⊕ POST OFFICE
 - ⊕ CEMETERY
 - ⊕ INDUSTRY OR FACTORY
 - ⊕ CITY HALL
 - ⊕ HIGHWAY GARAGE
 - ⊕ ATHLETIC FIELD
 - ⊕ COURTHOUSE

MAP OF
**BELLEVILLE
 CORINTH AND
 DANVILLE**
 YELL COUNTY, ARKANSAS
 ARKANSAS STATE HIGHWAY
 AND TRANSPORTATION DEPARTMENT
 PLANNING AND RESEARCH DIVISION
 IN COOPERATION WITH
 U. S. DEPARTMENT OF TRANSPORTATION
 FEDERAL HIGHWAY ADMINISTRATION

SCALE IN FEET
 0 1000 2000

MAY 2003
 BELLEVILLE POPULATION 441 - 2010 CENSUS
 CORINTH POPULATION 70 - 2010 CENSUS
 DANVILLE POPULATION 2,409 - 2010 CENSUS

