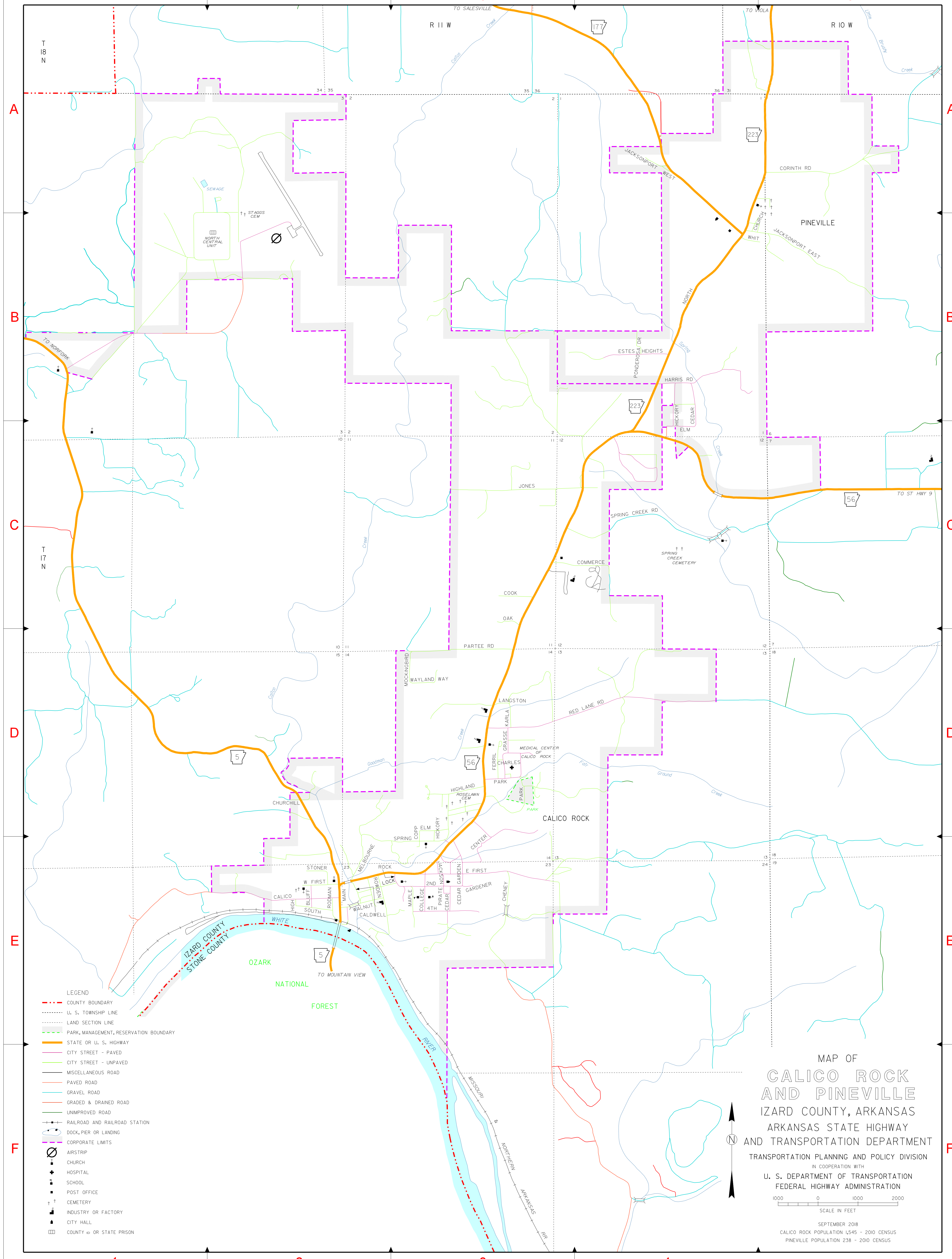


**INDEX**

- 2 ND
- 4 TH
- BLUFF
- CALDWELL
- CALICO
- CEDAR
- CEDAR GARDEN
- CENTER
- CHARLES
- CHENEY
- CHURCH
- CHURCHILL
- COLLEGE
- COMMERCE
- COOK
- COPP
- CORINTH RD
- E FIRST
- ELM
- ESTES HEIGHTS
- FERRIL
- GARDENER
- GRASSE
- HARRIS RD
- HICKORY
- HICKORY
- HIGH
- HIGHLAND
- JACKSON
- JACKSONPORT EAST
- JACKSONPORT WEST
- JONES
- KARLA
- LANGSTON
- LOCK
- MAIN
- MAPLE
- MELBOURNE
- MOCKINGBIRD
- NORTH
- OAK
- PARK
- PARTEE RD
- PIRATE
- RED LANE RD
- ROCK
- RODMAN
- ROWDEN
- SOUTH
- SPRING
- SPRING CREEK RD
- STONER
- W FIRST
- WALNUT
- WAYLAND WAY
- WHIT



- LEGEND**
- COUNTY BOUNDARY
  - U. S. TOWNSHIP LINE
  - LAND SECTION LINE
  - PARK, MANAGEMENT, RESERVATION BOUNDARY
  - STATE OR U. S. HIGHWAY
  - CITY STREET - PAVED
  - CITY STREET - UNPAVED
  - MISCELLANEOUS ROAD
  - PAVED ROAD
  - GRAVEL ROAD
  - GRADED & DRAINED ROAD
  - UNIMPROVED ROAD
  - RAILROAD AND RAILROAD STATION
  - DOCK, PIER OR LANDING
  - CORPORATE LIMITS
  - AIRSTRIP
  - ✕ CHURCH
  - ✕ HOSPITAL
  - ✕ SCHOOL
  - ✕ POST OFFICE
  - ✕ CEMETERY
  - ✕ INDUSTRY OR FACTORY
  - ✕ CITY HALL
  - COUNTY OR STATE PRISON

MAP OF  
**CALICO ROCK  
 AND PINEVILLE**  
 IZARD COUNTY, ARKANSAS  
 ARKANSAS STATE HIGHWAY  
 AND TRANSPORTATION DEPARTMENT  
 TRANSPORTATION PLANNING AND POLICY DIVISION  
 IN COOPERATION WITH  
 U. S. DEPARTMENT OF TRANSPORTATION  
 FEDERAL HIGHWAY ADMINISTRATION

SCALE IN FEET  
 0 1000 2000

SEPTEMBER 2018  
 CALICO ROCK POPULATION 1545 - 2010 CENSUS  
 PINEVILLE POPULATION 238 - 2010 CENSUS