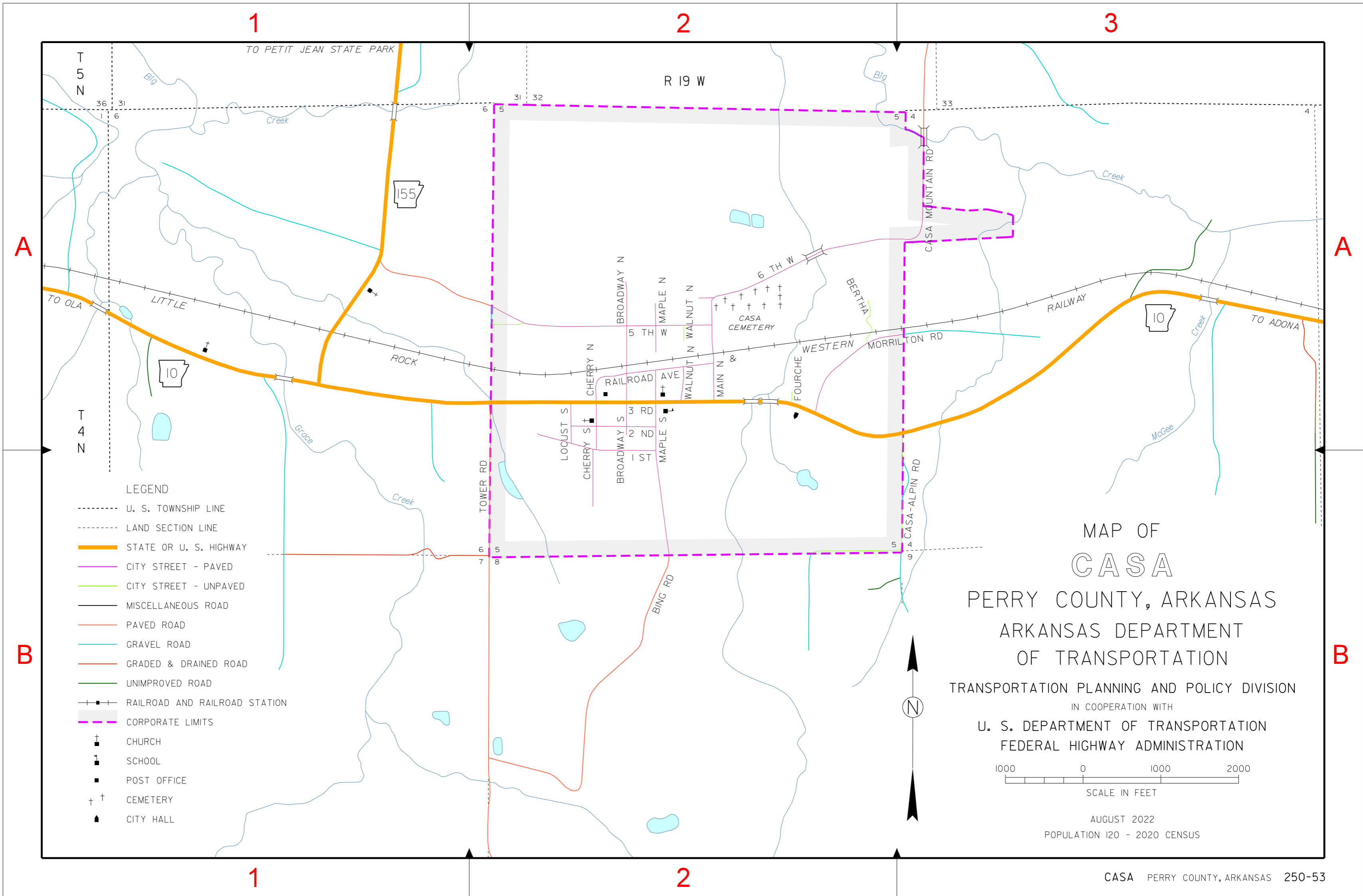


INDEX

1 ST	B-2
2 ND	A-2
3 RD	A-2
5 TH W	A-2
6 TH W	A-2
BERTHA	A-2
BROADWAY N	A-2
BROADWAY S	A-2
CASA-ALPIN RD	B-3
CHERRY N	A-2
CHERRY S	A-2
FOURCHE	A-2
LOCUST S	A-2
MAIN N	A-2
MAPLE N	A-2
MAPLE S	A-2
RAILROAD AVE	A-2
TOWER RD	B-2
WALNUT N	A-2



LEGEND

- U. S. TOWNSHIP LINE
- LAND SECTION LINE
- STATE OR U. S. HIGHWAY
- CITY STREET - PAVED
- CITY STREET - UNPAVED
- MISCELLANEOUS ROAD
- PAVED ROAD
- GRAVEL ROAD
- GRADED & DRAINED ROAD
- UNIMPROVED ROAD
- RAILROAD AND RAILROAD STATION
- CORPORATE LIMITS
- CHURCH
- SCHOOL
- POST OFFICE
- CEMETERY
- CITY HALL

MAP OF CASA PERRY COUNTY, ARKANSAS

ARKANSAS DEPARTMENT
OF TRANSPORTATION

TRANSPORTATION PLANNING AND POLICY DIVISION
IN COOPERATION WITH
U. S. DEPARTMENT OF TRANSPORTATION
FEDERAL HIGHWAY ADMINISTRATION



AUGUST 2022
POPULATION 120 - 2020 CENSUS