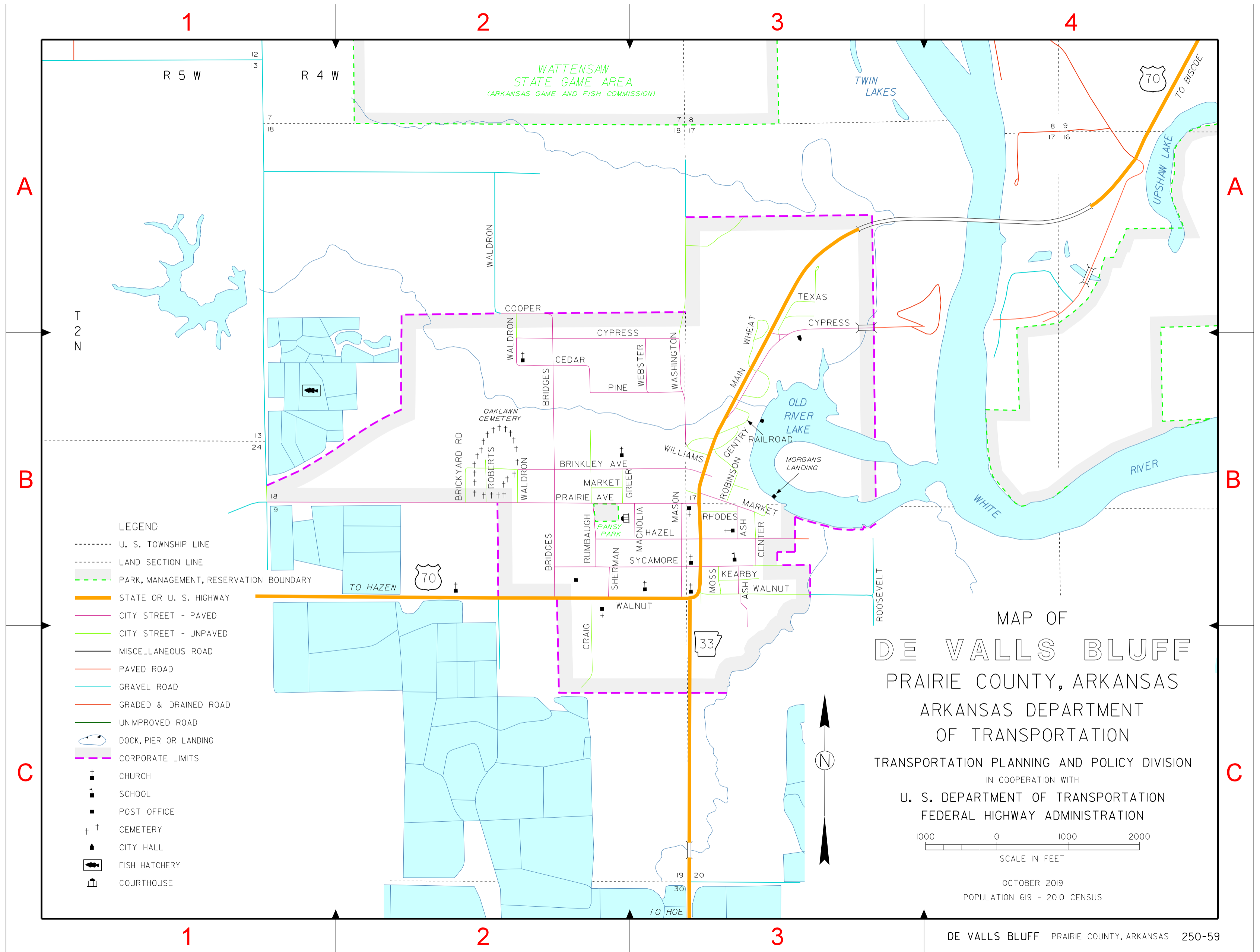


INDEX

- ASH B-3
- BRICKYARD RD B-2
- BRIDGES B-2
- BRINKLEY AVE B-2
- CEDAR B-2
- CENTER B-3
- COOPER A-2
- CRAIG C-2
- CYPRESS A-3
- CYPRESS B-2
- GENTRY B-3
- GREER B-2
- HAZEL B-3
- KEARBY B-3
- MAGNOLIA B-3
- MAIN B-3
- MARKET B-2
- MARKET B-3
- MASON B-3
- MOSS B-3
- PINE B-2
- PRAIRIE AVE B-2
- RAILROAD B-3
- RHODES B-3
- ROBERTS B-2
- ROBINSON B-3
- RUMBAUGH B-2
- SHERMAN B-2
- SYCAMORE B-3
- TEXAS A-3
- WALDRON B-2
- WALNUT B-3
- WASHINGTON B-3
- WEBSTER B-3
- WHEAT A-3
- WILLIAMS B-3



- LEGEND**
- U. S. TOWNSHIP LINE
 - LAND SECTION LINE
 - - - - - PARK, MANAGEMENT, RESERVATION BOUNDARY
 - STATE OR U. S. HIGHWAY
 - CITY STREET - PAVED
 - CITY STREET - UNPAVED
 - MISCELLANEOUS ROAD
 - PAVED ROAD
 - GRAVEL ROAD
 - GRADED & DRAINED ROAD
 - UNIMPROVED ROAD
 - ⬢ DOCK, PIER OR LANDING
 - — — CORPORATE LIMITS
 - † CHURCH
 - ⬢ SCHOOL
 - ⬢ POST OFFICE
 - †† CEMETERY
 - ⬢ CITY HALL
 - ⬢ FISH HATCHERY
 - ⬢ COURTHOUSE

MAP OF
DE VALLS BLUFF
 PRAIRIE COUNTY, ARKANSAS
 ARKANSAS DEPARTMENT
 OF TRANSPORTATION
 TRANSPORTATION PLANNING AND POLICY DIVISION
 IN COOPERATION WITH
 U. S. DEPARTMENT OF TRANSPORTATION
 FEDERAL HIGHWAY ADMINISTRATION

1000 0 1000 2000
 SCALE IN FEET

OCTOBER 2019
 POPULATION 619 - 2010 CENSUS