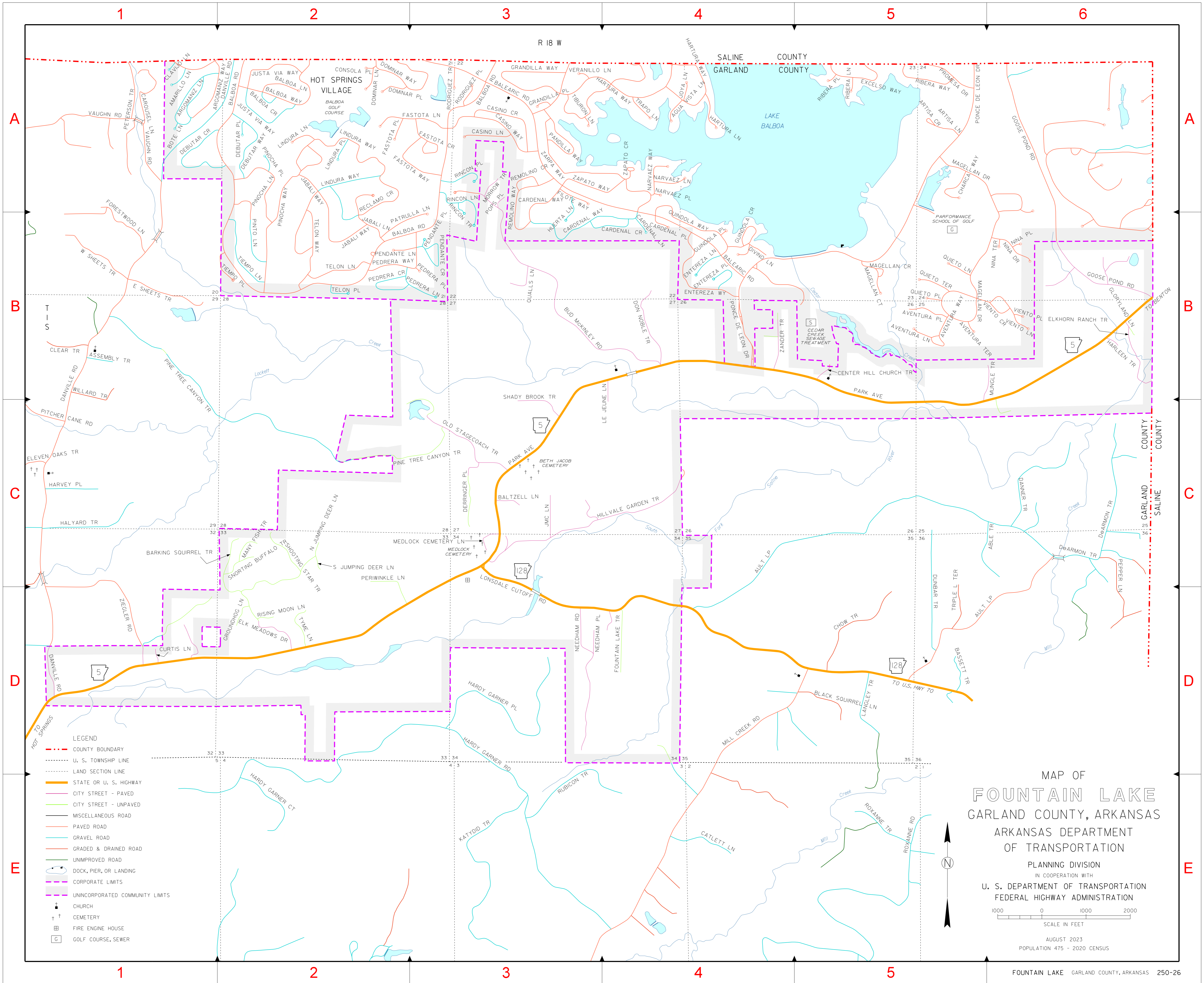


**INDEX**

- BAL TZELL LN C-3
- BARKING SQUIRREL TR C-1
- BUD MCKINLEY RD B-3
- CENTER HILL CHURCH TR B-5
- CURTIS LN D-1
- DANVILLE RD D-1
- DERRINGER PL C-3
- DON NOBLE TR C-3
- ELK MEADOWS DR B-4
- ELKHORN RANCH TR B-4
- FOUNTAIN LAKE TR B-6
- GLORYLAND LN B-6
- GOOSE POND RD B-6
- GROUNDHOG LN B-6
- HARLEEN TR B-2
- HILL VALE GARDEN TR B-2
- JMC LN B-2
- LE JEUNE LN B-2
- LONSDALE CUTOFF RD B-2
- MANY FISH TR B-2
- MEDLOCK CEMETERY LN B-2
- MORROW TR B-2
- MUNGLE TR B-2
- N JUMPING DEER LN B-2
- NEEDHAM PL B-2
- NEEDHAM RD B-2
- OLD STAGECOACH TR B-2
- PARK AVE B-2
- PERIWINKLE LN B-2
- PINE TREE CANYON TR B-2
- POPS PL B-2
- QUALLS LN B-2
- RISING MOON LN B-2
- S JUMPING DEER LN B-2
- SHADY BROOK TR B-2
- SHOOTING STAR TR B-2
- SNORTING BUFFALO TR B-2
- TYME LN B-2
- ZANDER TR B-2
- ZEIGLER RD B-2



- LEGEND**
- COUNTY BOUNDARY
  - - - U. S. TOWNSHIP LINE
  - ..... LAND SECTION LINE
  - STATE OR U. S. HIGHWAY
  - CITY STREET - PAVED
  - CITY STREET - UNPAVED
  - MISCELLANEOUS ROAD
  - PAVED ROAD
  - GRAVEL ROAD
  - GRADED & DRAINED ROAD
  - UNIMPROVED ROAD
  - DOCK, PIER, OR LANDING
  - CORPORATE LIMITS
  - UNINCORPORATED COMMUNITY LIMITS
  - ⊕ CHURCH
  - †† CEMETERY
  - ⊞ FIRE ENGINE HOUSE
  - ⊞ GOLF COURSE, SEWER

MAP OF  
**FOUNTAIN LAKE**  
 GARLAND COUNTY, ARKANSAS  
 ARKANSAS DEPARTMENT  
 OF TRANSPORTATION  
 PLANNING DIVISION  
 IN COOPERATION WITH  
 U. S. DEPARTMENT OF TRANSPORTATION  
 FEDERAL HIGHWAY ADMINISTRATION

1000 0 1000 2000  
 SCALE IN FEET

AUGUST 2023  
 POPULATION 475 - 2020 CENSUS