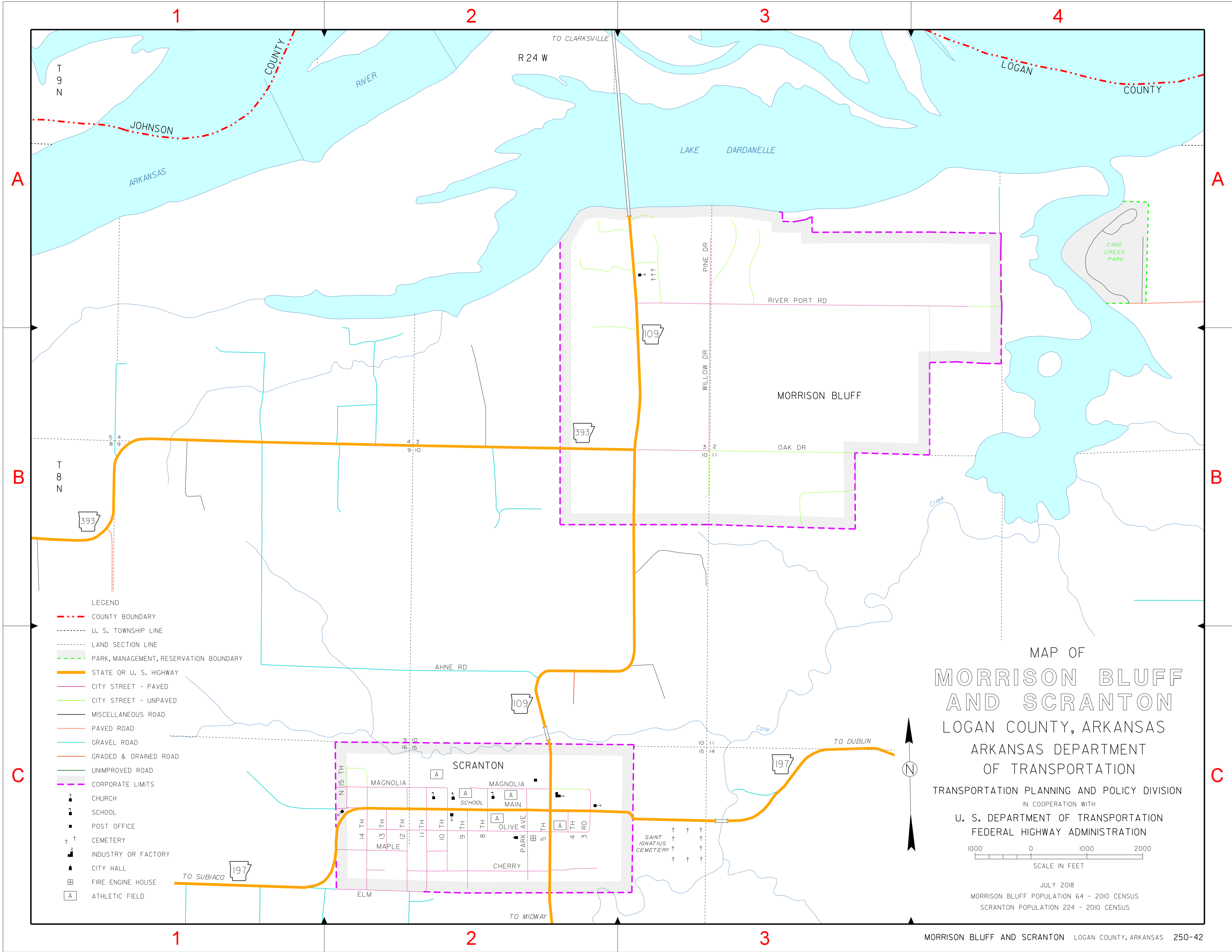


INDEX

- 3 RD C-2
- 4 TH C-2
- 5 TH C-2
- 8 TH C-2
- 10 TH C-2
- 11 TH C-2
- 12 TH C-2
- 13 TH C-2
- CHERRY C-2
- ELM C-2
- MAGNOLIA C-2
- MAPLE C-2
- N 15 TH C-2
- OAK DR B-3
- OLIVE C-2
- PINE DR A-3
- RIVER PORT RD A-3
- WILLOW DR B-3



- LEGEND**
- COUNTY BOUNDARY
 - U. S. TOWNSHIP LINE
 - LAND SECTION LINE
 - PARK, MANAGEMENT, RESERVATION BOUNDARY
 - STATE OR U. S. HIGHWAY
 - CITY STREET - PAVED
 - CITY STREET - UNPAVED
 - MISCELLANEOUS ROAD
 - PAVED ROAD
 - GRAVEL ROAD
 - GRADED & DRAINED ROAD
 - UNIMPROVED ROAD
 - CORPORATE LIMITS
 - CHURCH
 - SCHOOL
 - POST OFFICE
 - CEMETERY
 - INDUSTRY OR FACTORY
 - CITY HALL
 - FIRE ENGINE HOUSE
 - ATHLETIC FIELD

MAP OF
**MORRISON BLUFF
 AND SCRANTON**
 LOGAN COUNTY, ARKANSAS

ARKANSAS DEPARTMENT
 OF TRANSPORTATION
 TRANSPORTATION PLANNING AND POLICY DIVISION
 IN COOPERATION WITH
 U. S. DEPARTMENT OF TRANSPORTATION
 FEDERAL HIGHWAY ADMINISTRATION



JULY 2018
 MORRISON BLUFF POPULATION 64 - 2010 CENSUS
 SCRANTON POPULATION 224 - 2010 CENSUS