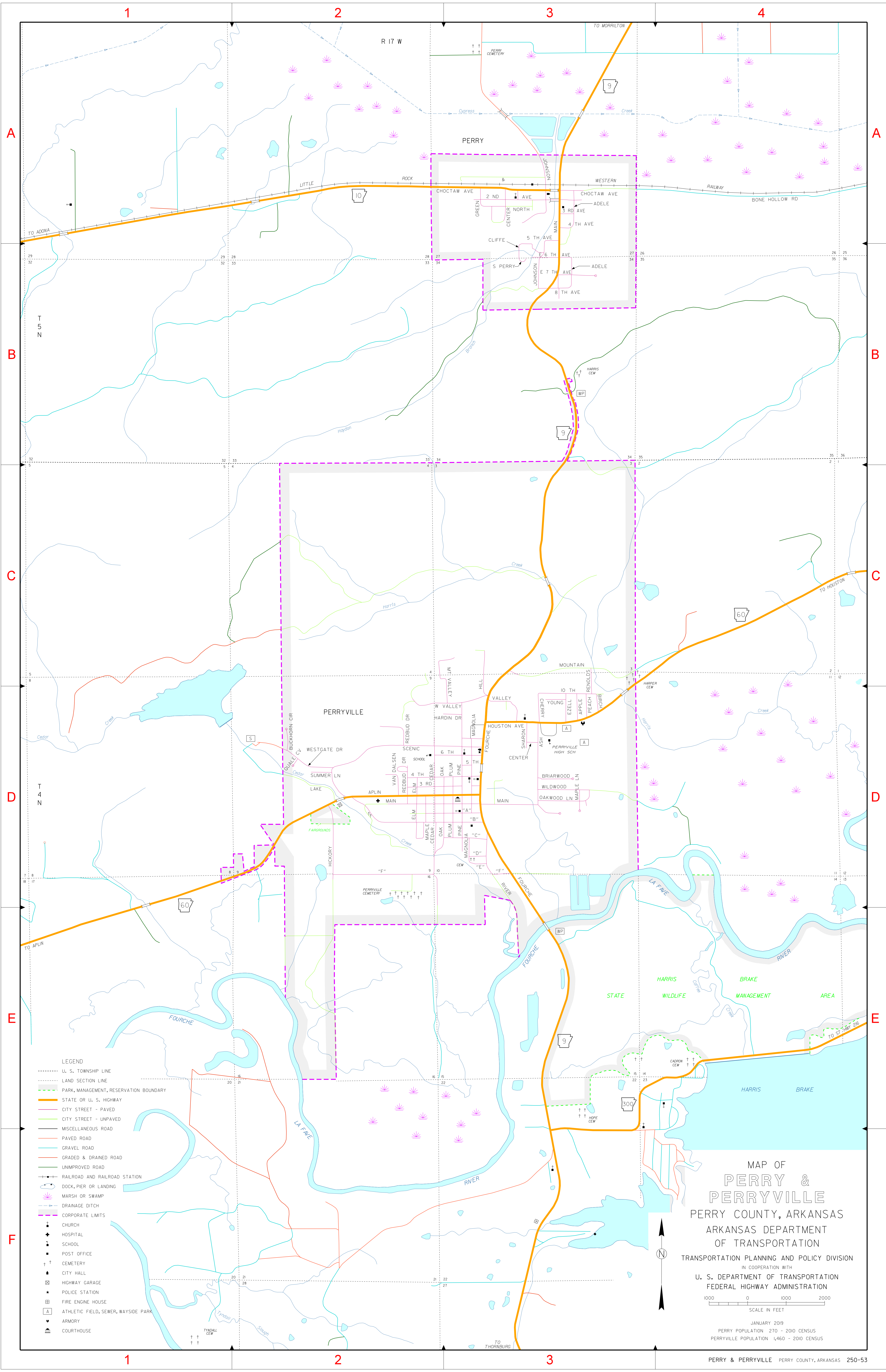


**INDEX**

- 2 ND AVE A-3
- 3 RD D-2
- 3 RD AVE A-3
- 4 TH D-3
- 4 TH AVE A-3
- 5 TH D-3
- 5 TH AVE A-3
- 6 TH D-3
- 7 TH B-3
- 8 TH D-3
- 9 TH D-3
- 10 TH D-3
- "A" D-3
- APLIN D-3
- APPLE D-3
- ASH D-3
- "B" D-3
- BIRCH D-3
- BRIARWOOD D-3
- BUCKHORN CIR D-2
- "C" D-3
- CEDAR D-2
- CENTER A-3
- CENTER D-3
- CHERRY D-3
- CHOCTAW AVE A-3
- CLIFF ADELLE A-3
- "D" D-3
- "E" D-3
- ELM D-2
- EZELL D-3
- "F" D-2
- FOURCHE D-3
- GREEN D-3
- HICKORY D-3
- HILL D-3
- HOUSTON D-3
- JOHNSON A-3
- JOHNSON B-3
- LAKE D-2
- MAGNOLIA D-3
- MAIN A-3
- MAIN D-3
- MAPLE D-3
- MAPLE LN D-3
- MOUNTAIN C-3
- MT VALLEY C-3
- NORTH A-3
- OAK D-2
- OAKWOOD LN D-3
- PEACH D-3
- PINE D-3
- PLUM D-3
- QUALE CV D-3
- REBBUD DR D-2
- RENOLDS C-3
- RIVER D-3
- SCENIC D-2
- SHARON D-3
- VALLEY D-3
- VAN DALSEN D-3
- WAGNER D-2
- WESTGATE DR D-3
- WILDWOOD D-3
- YOUNG D-3



- LEGEND**
- U. S. TOWNSHIP LINE
  - LAND SECTION LINE
  - PARK, MANAGEMENT, RESERVATION BOUNDARY
  - STATE OR U. S. HIGHWAY
  - CITY STREET - PAVED
  - CITY STREET - UNPAVED
  - MISCELLANEOUS ROAD
  - PAVED ROAD
  - GRAVEL ROAD
  - GRADED & DRAINED ROAD
  - UNIMPROVED ROAD
  - RAILROAD AND RAILROAD STATION
  - DOCK, PIER OR LANDING
  - MARSH OR SWAMP
  - DRAINAGE DITCH
  - CORPORATE LIMITS
  - CHURCH
  - HOSPITAL
  - SCHOOL
  - POST OFFICE
  - CEMETERY
  - CITY HALL
  - HIGHWAY GARAGE
  - POLICE STATION
  - FIRE ENGINE HOUSE
  - ATHLETIC FIELD, SEWER, WAYSIDE PARK
  - ARMORY
  - COURTHOUSE

**MAP OF**  
**PERRY &**  
**PERRYVILLE**  
 PERRY COUNTY, ARKANSAS  
 ARKANSAS DEPARTMENT  
 OF TRANSPORTATION  
 TRANSPORTATION PLANNING AND POLICY DIVISION  
 IN COOPERATION WITH  
 U. S. DEPARTMENT OF TRANSPORTATION  
 FEDERAL HIGHWAY ADMINISTRATION

0 1000 2000  
 SCALE IN FEET

JANUARY 2019  
 PERRY POPULATION 270 - 2010 CENSUS  
 PERRYVILLE POPULATION 1,460 - 2010 CENSUS