

# INFORMATION RELEASE



## Office of the Director

ARKANSAS STATE HIGHWAY AND TRANSPORTATION DEPARTMENT  
P. O. Box 2261 – Little Rock, Arkansas Telephone (501) 569-2227

**Contact:**  
Randy Ort/Jeff Whatley

**NR13-016**  
January 17, 2013

### **AHTD IDENTIFIES PREFERRED ALIGNMENT FOR NORTH-SOUTH CORRIDOR IN NORTHWEST ARKANSAS**

**LITTLE ROCK (1-17)** - The Arkansas State Highway and Transportation Department announces the preferred alignment of a new eastern north-south corridor that will link Fayetteville and Rogers.

The preferred alignment will extend Highway 265 north from Highway 264 to Highway 94 using a combination of improvements to existing routes and construction on new location. It will begin at Highway 264 and continue in a northern direction along Old Wire Road. At Frisco Cemetery Road, the alignment will continue north on new location until it connects with South First Street. The alignment will then continue north along South First Street and end at Highway 94 (New Hope Road) in Rogers.

It's the culmination of extensive planning and environmental studies that began in 2009. The criteria used for designating the preferred alignment included cost effectiveness, the overall impacts, and public input.

"The purpose of the proposed project is to improve north-south connectivity and enhance mobility for travelers in the Northwest Arkansas metro area," says Highway Commissioner Dick Trammel.

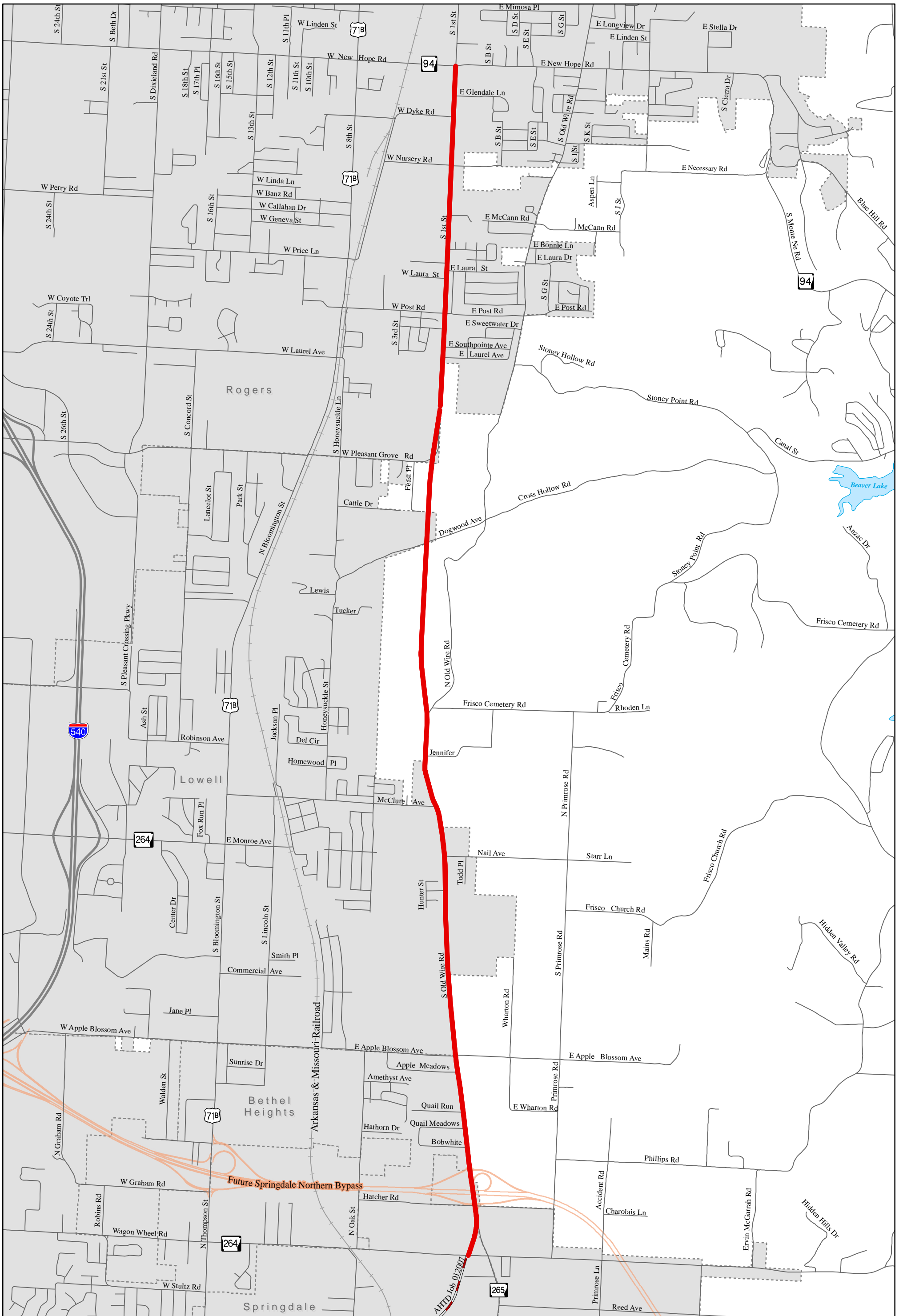
After further survey and design work is complete, a Design Public Hearing will be held to share details on the design and proposed right of way limits, and to receive additional public comment on the proposal.

A copy of the Environmental Assessment and the project location map are available for viewing in the Recent Public Meeting Section of the Department's website at [ArkansasHighways.com](http://ArkansasHighways.com).

***Attached you will find a map detailing the preferred alignment.***

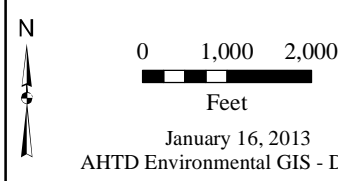
---

---



Preferred Alternative  
 Job 090373  
 Hwy. 264 - Hwy. 94  
 Benton County

Preferred Alternative



January 16, 2013  
 AHTD Environmental GIS - DeMasi