

**The AHTD**

# CENTERLINE

VOLUME 9, NUMBER 2 • FEBRUARY 17, 2000

## ***Message from the Director:*** **Employee Snow Removal Efforts Commended**

The snowstorm that hit Arkansas on January 27 and 28 rapidly dumped snow on every county in the state. Heavy amounts were recorded in all areas and record amounts were experienced in south Arkansas.

The storm placed a tremendous burden on the motorists of Arkansas and created a very difficult challenge to AHTD employees. Around-the-clock scheduling of Department personnel began Wednesday night, January 26, and continued through Sunday. Snow removal efforts did not completely end until Friday, February 4 in some areas.

Our employees worked long hours, under difficult circumstances, to keep traffic moving. All of you who

took part are to be recognized for your performance.

This was a total team effort. From drivers, equipment operators, Area Headquarters personnel, mechanics, radio room operators, storeroom personnel and clerks, to Resident Engineer's office personnel and others – everyone worked together to address this emergency.

We have received many letters from the public thanking

the Department for the dedication of our personnel. Some of these will be published in the next issue of *Arkansas Highways*.

On behalf of the Highway Commission and AHTD Senior Staff, thank you for a job well done.

Dan Flowers  
Director of Highways  
and Transportation



# Sick Leave Incentive Bonus

Act 1127 of the 1999 Arkansas General Assembly provides financial incentives to state employees to decrease their use of sick leave.



One section of the act provides employees with a \$20 per day lump-sum incentive bonus for unused sick leave accrued during the calendar year 2000. This bonus is a one-time benefit payable on, or after, March 1, 2001.

To be eligible for this bonus, average sick leave used for **ALL** state employees during the calendar year 2000 must decrease by at least fifteen percent (15%) compared to the calendar year 1998 average sick leave usage. If the average sick leave usage for all state employees only decreases between 12% and 15%, the law provides that the Governor may authorize the bonus payment.

The 1998 average sick leave usage for Arkansas State Highway and Transportation Department employees was 96 hours. Therefore, sick leave usage will have to be reduced during the calendar year 2000 by 14 hours per employee to reach the 15% required by Act 1127.

If you have questions regarding this program, contact Barbara Cox in the Human Resources Office at 501-569-2451.

# Catastrophic Leave Policy Revision

The Department's Catastrophic Leave Policy was revised January 11, 2000 by Commission Minute Order 2000-010. The changes include clarification to the eligibility requirement which now stipulates that "The employee must have elected to participate in the program by filing a written agreement to donate to the Catastrophic Leave Bank a minimum of two (2) days annual or sick leave each year and must have participated in the **prior leave year.**"

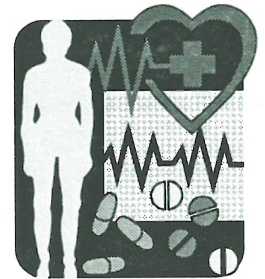
In addition, employees approved for and receiving Workers' Compensation benefits for injuries or illnesses occurring on or after April 1, 2000 **will be eligible** for catastrophic leave benefits providing they meet the minimum requirements. Employees will be paid the difference between the benefits paid under Workers' Compensation and their normal salary.

Questions should be directed to Barbara Cox in the Human Resources Office at 501-569-2451.

# New Prescription Drug Program

Effective March 1, 2000, Advance Paradigm, Inc. will become the current vendor for the State and Public School Employee Prescription Drug Program.

Advance Paradigm, Inc. will send insured employees a new prescription drug card and explanation before March 1, 2000. This new ID card and information will be mailed directly to employee's home address.



If you have moved, please request an address correction through the Department's Insurance Office at 501-569-2417.

Employees should note that this is only a change in prescription card companies. No change in costs will be incurred.

Beginning on March 1, the PAID Prescription drug cards are no longer valid. You must use your Advance Paradigm card. The Advance Paradigm Member Services toll-free number is 800-929-2525.

# State Holiday

Monday, February 21, 2000, is a state holiday for Highway and Transportation Department employees in observance of George Washington's Birthday.

All work by Department employees will be suspended except for cases of emergency.

# First Group of Officers Complete AHP Training Course

The number of Arkansas Highway Police officers grew on January 14, 2000, as 25 recruits took part in a graduation ceremony marking the end of 21 weeks of intensive law enforcement training.

The graduation ceremony took place in the Militia Hall Auditorium at Camp Robinson in North Little Rock. Highway Commission Chairman Herby Branscum, Jr., AHTD Director Dan Flowers and Highway Police Chief Ron Burks spoke at the event.

This class of new officers is unique because they were the first to complete the Depart-

ment's newly implemented in-house training program. They also represent the largest group of new officers hired at one time.

The training course created by the AHP staff far exceeds minimum standards required for all law enforcement officers and includes the specialized training needed to be a Highway Police officer.

Recruits received 518 hours of classroom instruction combined with weeks of field training in both mobile units and weigh stations.

During training, the recruits were divided into four groups, or squads. Each squad was as-

signed current Highway Police officers who assisted in the training. Also, participating in the training were the Training and Safety Section, Legal Division, and Permits Section.

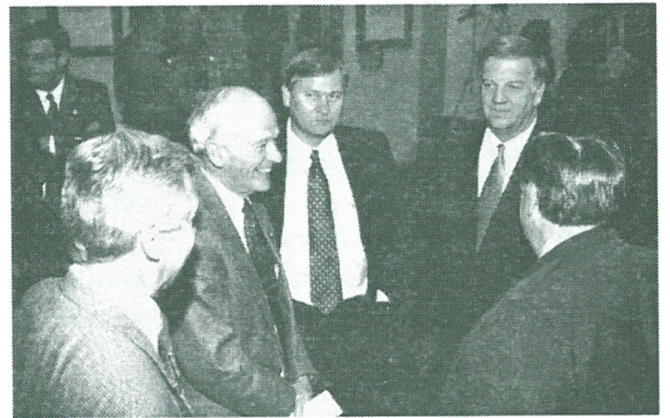
Prior to graduation, the recruit class named itself "The Chief Roy L. Johnson Class" in honor of longtime AHP Chief Roy Johnson who passed away in 1999. Chief Johnson's widow and daughter attended the graduation ceremony.

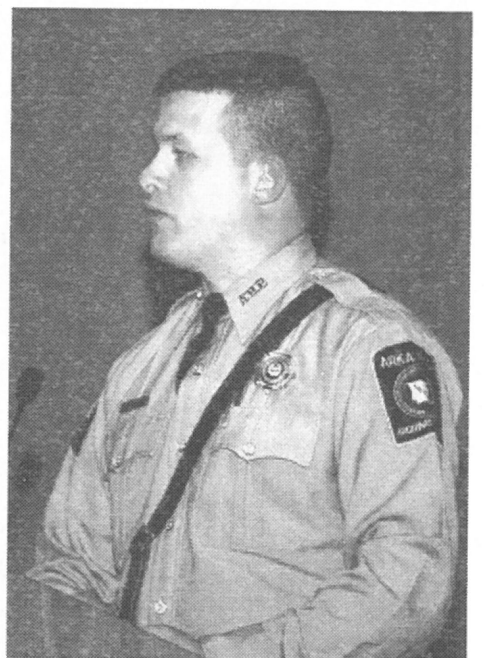
Congratulations to the new officers and to the AHP and AHTD instructors who made the class such a success.

## Arkansas Highway Police 1999 Roy L. Johnson Class



Standing, left: Highway Commissioners John Lipton, Jonathan Barnett, and Herby Branscum, Jr. Standing, right: Jane Wilson, Chief of Administration and Public Affairs; Ron Burks, AHP Chief; Mrs. Roy L. (Louise) Johnson; and Dan Flowers, AHTD Director of Highways and Transportation. Members of the graduating class are; seated left to right: Benjamin Bennett, Jeffrey Bickerstaff, Dickie Branch, Ronald Burnett, Felix Carr, Jason Daggs and Thomas Falls. Second row: Robert Garrett, Sammie Hart, Brian Hornsby, David Hughes, Paul Keith, Charles Knight, Eric McNeely and Larry Mitchell. Third row: Elizabeth Moore, Clyde Murphy, Travis Nelson, William Oliphant, Shad Overman, Robert Sellers, Thomas Simpson, Fred Standridge, Gregory Toland and Todd Thurman.







# 106 AHTD Crews Receive 1999 Safety Awards

## Clarksville Residency Remains On Top

In December 1999, the Arkansas State Highway and Transportation Department's Training and Safety Section presented 106 safety awards to crews around the state.

Safety awards are presented to a crew when there has been no preventable motor vehicle or equipment accident and no preventable lost-time personal injury accident. The period covering the 1999 awards was November 1, 1998 to October 31, 1999.

Listed below are the crews receiving 1999 safety awards and their years for receiving consecutive safety awards.



### Most Consecutive Years Safety Record 23-Year Safety Award - Resident Engineer Office #82

Seated left to right: Troy Brown, Senior Construction Materials Inspector; Billy Sampley, Construction Aide II; Joe Hurst, Inspector; Gale Davis, Resident Office Technician; Bill Fine, Resident Engineer; Norman Brown, Construction Project Coordinator. Not shown: Gary Hawkins, Senior Inspector. Standing: Frank Russenberger, District 8 Engineer; Jane Wilson, Chief of Administration and Public Affairs; Herby Branscum, Jr, Commission Chairman; Dan Flowers, Director.

Div./Dist.	Crew	Crew Leader	Years
District 08	Resident Engineer 82	Bill Fine	23
District 01	Resident Engineer 11	John McMickle	22
District 09	Peel Ferry	Curley Johnson	20
District 01	Phillips County	Bobby Weatherford	14
District 05	Administration	Lyndal Waits	14
District 04	Bridge Inspection	Buddy Turner	12
District 05	Bridge Inspection	Ed Dickey	11
District 07	Resident Engineer 76	Gordon Hite	11
District 10	Bridge Inspection	Richard Hays	10
District 01	Monroe County	Eddie Bryant	9
District 07	Administration	Coy Campbell	9
District 07	Bridge Inspection	Charles Vance	9
District 08	District Stockroom	Steve Sheets	9
District 05	Bridge Inspection	Frey Heyde	8
District 07	Bridge Inspection	Stanley Smith	8
District 10	Bridge Inspection	Keith Smith	8
District 01	Bridge Inspection	Joel Davis	7
District 01	Bridge Inspection	Ron Ellis	7
District 02	Bridge Inspection	Rick Wilson	7
District 02	Grant County	Paul Griffith	7
District 07	Resident Engineer 73	Gary Grimes	7
District 08	Bridge Inspection	George Martin	7
District 09	Bridge Inspection	Butch Fancher	7
District 05	Resident Engineer 52	Jim Leggett	6
District 06	Resident Engineer 62	Emanuel Banks	6
Maintenance	Statewide Electrician	Ron Eckhardt	6
Maintenance	Statewide Electrician	Ron Winkler	6
District 02	Resident Engineer 21	Mike Thompson	5
District 07	Resident Engineer 74	Bob Myers	5
District 08	Sign Crew	Bruce Bartlett	5
District 02	Resident Engineer 23	Michael Benson	4
District 04	Crawford I County	David Richards	4
District 06	Maintenance Night Crew	Bobby Raines	4
District 06	Resident Engineer 64	Tim Baber	4
District 07	Columbia County	Johnnie Risher	4
District 07	Dallas County	Dale Reddin	4
District 02	Administration	Jim Briley	3
District 02	Arkansas County I	Clinton Bohannon	3
District 02	Ashley County	Jimmy Johnson	3
District 02	Drew County	Dwain Miles	3
District 03	Nevada County	Bill Callicott	3
District 04	District Stockroom	Lee Dewey	3
District 04	Sebastian I County	Jim Carter	3
District 05	Sealing Crew	D.J. Drake	3
District 06	Administration	Leonard Hall	3
District 06	Bridge Inspection	Macon Ramsey	3
District 06	Maintenance Crew	Jerry Zuber	3
District 07	Bradley County	Alan Hearnberger	3
District 07	District Shop	Glenn Howell	3
District 07	Maintenance Crew	Joel Todd	3
District 07	Ouachita County	Phil Griffin	3
District 07	Sign Crew	Jim Woods	3
District 08	Perry County	Joe Phillips	3
District 10	Bridge Crew	Joe Hester	3
District 10	Bridge Inspection	Joe Foresythe	3

District 10	Resident Engineer 05	Burl Hudson	3
District 02	Resident Engineer 24	Thale Keisling	2
District 02	Sealing Crew	Kelly Slater	2
District 03	Bridge Inspection	Jim Owensby	2
District 03	Maintenance Crew	Kurt Moritz	2
District 03	Pike County	Richard Wheeler	2
District 06	Bridge Inspection	Calvin Hill	2
District 06	Park Crew	Danny Carlton	2
District 07	Bridge Crew	James Alexander	2
District 07	Clark County	Billy Karber	2
District 07	Cleveland County	Ricky Neal	2
District 09	Madison County	John Fancher	2
District 09	Sealing Crew	Ronnie Faught	2
District 10	Administration	Joe Barnett	2
District 10	Resident Engineer 06	Brent Watkins	2
District 01	Crittenden County	Sylvester Jennings	1
District 01	Lee County	Jimmy Bryant	1
District 01	Maintenance Crew	Roy Morris	1
District 02	Arkansas County II	Clinton Bohannon	1
District 02	Chicot County	Ezra McFadden	1
District 02	Desha County	Harlan Colbert	1
District 02	Lincoln County	Bill Plunkett	1
District 03	Bridge Crew	Larry Johnson	1
District 03	Howard County	Alvin Vaughn	1
District 03	Resident Engineer 31	Ken Harris	1
District 04	Bridge Crew	Mark Williams	1
District 04	Bridge Inspection	Raymond Lee	1
District 04	Resident Engineer 43	Leon Brewer	1
District 04	Resident Engineer 44	Bashar Qedan	1
District 04	Sign Crew	Stephen Neff	1
District 04	Washington County II	Larry Thornburg	1
District 05	Fulton County	Dennis Williams	1
District 05	Resident Engineer 53	Hulon Rice	1
District 05	Resident Engineer 55	Stan Glover	1
District 06	Resident Engineer 61	Steve Peeples	1
District 06	Saline County	Ralph Burge	1
District 06	Sign Crew	Jerry Campbell	1
District 07	Union County	Randy Gates	1
District 08	Resident Engineer 84	Bud McMillian	1
District 08	Van Buren County	Boyd Bonds	1
District 09	Baxter County	Connis Ingram	1
District 09	Benton County I	Robert Pack	1
District 09	Bridge Crew	Gene Taylor	1
District 09	Carroll County	Kit Core	1
District 09	Marion County	Kenneth Oxford	1
District 09	Resident Engineer 92	Butch Martin	1
District 09	Resident Engineer 95	Greg Harding	1
District 09	Sign Crew	J.N. Mallett	1
District 10	Lawrence County	Harold Lady	1
District 10	Maintenance Crew	Dairl Hyde	1
District 10	Sealing Crew	Ronnie Blankenship	1

# AHTD PEOPLE



JANUARY 2000

## NEW EMPLOYEES

### Bridge

Steven Peyton, Civil Engineer

### District 1

Marilyn Johnson, Field Clerk I

### District 2

Edward Belcher, Darrell Smith, General Laborers

### District 3

Jerry McMurray, Single Axle Truck Driver

### District 5

Davy Wilkinson, Single Axle Truck Driver

### District 6

Robert Etheridge, General Laborer

### District 8

Joyce Sherrill, General Laborer

### District 9

Linda Gaines, Single Axle Truck Driver

### District 10

Charlie Greene, General Laborer

## PROMOTIONS

### Bridge

Charles Ellis, Senior Bridge Design Engineer  
Michael Hill, Senior Bridge Design Engineer

### Computer Services

James Smith, Computer Technician II  
Bryan Stewart, Data Processing Manager

### Highway Police

Sherry Kling, Permit Technician

### Legal

Kim Jewell, Office Administrative Assistant V

### Maintenance

Edward Marlin, Striping Superintendent  
Chad Ring, Single Axle Truck Driver  
Denny Stout, Single Axle Truck Driver  
Carl Eford, Heavy Bridge Repairer II

### Planning & Research

Bobbie White, Highway Performance & Needs Tech.

### Programs & Contracts

Patricia Bending, P&C Technician I

### Right of Way

Edward Gibbs, Senior Abstractor

### Roadway Design

Steven Moore, Roadway Designer

### District 2

Earnest Parker, Single Axle Truck Driver  
Roger Turner, Area Maintenance Supervisor

### District 3

Betty Barham, Area Headquarters Attendant

### District 4

Fred Ridenhour, Distributor/Roller Operator

### District 5

Dustin Westmoreland, Bridge Repairer I

### District 6

Clyde Bush, Charles Martin, Truman Watson,  
Single Axle Truck Drivers

### District 9

William Comfort, Motor Patrol Operator  
Ricky Sattler, Area Maintenance Supervisor

### District 10

Lorraine Cornish, Single Axle Truck Driver  
Ricky Hale, Bridge Repairer I  
Greg McAnally, Maintenance Aide I  
Billy Riley, Construction Project Coordinator  
Darsha Tipton, Personnel Clerk

## SERVICE

### 40 Years

Jimmy Rainwater, D-8 Senior Inspector

### 35 Years

Hara Dillard, D-6 Construction Project Coordinator

### 30 Years

Marie Claunch, ROW Closing Agent  
Kim McDowell, D-4 Assistant Maintenance Supt.  
James House, D-5 Construction Engineer

### 25 Years

Louise Watts, Chief Engineer Adm. Asst. I  
Charles Raines, D-2 Maintenance Aide I  
Ronald Nordman, D-6 Single Axle Truck Dr.  
John Bloomfield, D-7 Crew Leader  
Jim Sigler, D-8 Area Maintenance Supv.  
John Watkins, D-10 Senior Mechanic

### 20 Years

Paul Claunch, AHP First Lieutenant  
Don Mitchell, ROW Plans Designer II  
Claude Klinck, Roadway Design Staff Design Engr.  
Mary Bryant, D-4 Office Admin. Asst. V  
Johnnie Hyslip, D-5 Distributor/Roller Operator  
Billy Bolding III, D-5 Construction Aide I  
Hulon Rice, D-5 Resident Engineer  
Alan Quimby, D-7 Maintenance Aide II  
John Magie, D-8 Crew Leader

### 15 Years

Patti Bryant, Environmental Office Admin. Asst. III  
Jerry Harwood, AHP Corporal  
Addison Holloway, AHP Second Lieutenant  
Walter Caton, Human Resources Crew Leader  
Charles Bishop, Communications Maint. Specialist  
Patricia Ioup, P&R Public Trans. Technician  
Jerald McKinney, P&R Intermodal Trans. Planner  
Dean Farris, Right of Way Negotiator  
Perry Johnston, Right of Way Asst. Division Head  
James Bryant, Surveys Aide III  
Leonard McCormick, D-6 Maintenance Aide II  
William Lindsey, D-6 Inspector  
George Parks, D-9 Area Headquarters Attendant  
Donnie Pfeifer, D-10 Single Axle Truck Driver

### 10 Years

Robyn Smith, Fiscal Services Senior Accountant  
Thomas Sturch, Materials Technician III  
Jeff Turner, D-7 Motor Patrol Operator  
Mark Pollard, D-10 Hydraulic Excavator Opr./Finish

### 5 Years

Juanita Tilghman, D-1 Maintenance Aide I  
Cathy Blasengame, D-2 Maintenance Aide I

Melvin Mabry, D-6 Motor Patrol Operator  
Kenneth Caldwell, D-8 Bridge Repairer I  
Roger Wilson, D-8 Backhoe/Front End Loader Opr.

## RETIREMENTS

Troyce Wilson, Director's Office Administrative Assistant I, retired January 21 with 29+ years

Mary Gibson, Legal Aide, retired January 12 with 25+ years

Melba Shepard, Human Resources Division Head, retired January 10 with 29+ years

Gary Wilmoth, Computer Services Applications Analyst/Programmer V, retired January 31 with 39+ years

Louis Bryant, Materials Chemist III, retired January 5 with 26+ years

Paul Elcan, Planning and Research Transportation Management Analyst II, retired January 13 with 40+ years

Jimmy Ruffin, District 1 Single Axle Truck Driver, retired January 3 with 15+ years

Ronald Dunigan, District 1 Crew Leader, retired January 6 with 31+ years

Paul Griffith, District 2 Area Maintenance Supervisor, retired January 28 with 41+ years

Buddy McKamie, District 3 Bridge Repairer II, retired January 27 with 13+ years

James Draper, District 3 Distributor/Roller Operator, retired January 17 with 15+ years

John Watkins, District 3 Assistant Resident Engineer, retired January 27 with 29+ years

W. Inman, District 10 Motor Patrol Operator/Finish, retired January 4 with 15+ years

## The AHTD CENTERLINE

Published monthly by and for employees of the Arkansas State Highway and Transportation Department as a medium of departmental news and other information. Correspondence and materials should be directed to the Public Affairs Office, 10324 Interstate 30, Room 1002, P.O. Box 2261, Little Rock, Arkansas 72203-2261, 501-569-2227.

### ARKANSAS STATE HIGHWAY COMMISSION

HERBY BRANSCUM, JR., CHAIRMAN  
JOHN "M" LIPTON, VICE CHAIRMAN  
J.W. "BUDDY" BENAFIELD  
MARY P. "PRISSY" HICKERSON  
JONATHAN BARNETT

DAN FLOWERS  
DIRECTOR OF HIGHWAYS AND TRANSPORTATION

© 2000 - AHTD