



www.ArkansasInterstates.com

ARKANSAS STATE HIGHWAY AND TRANSPORTATION DEPARTMENT

CENTERLINE

VOLUME 10, NUMBER 12 • December 20, 2001

Retiree's Association Elects New Officers

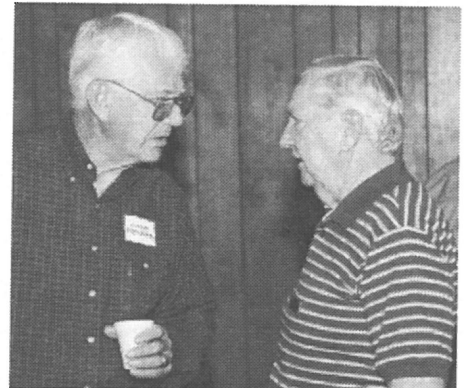
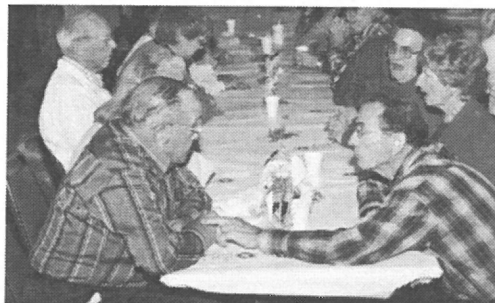
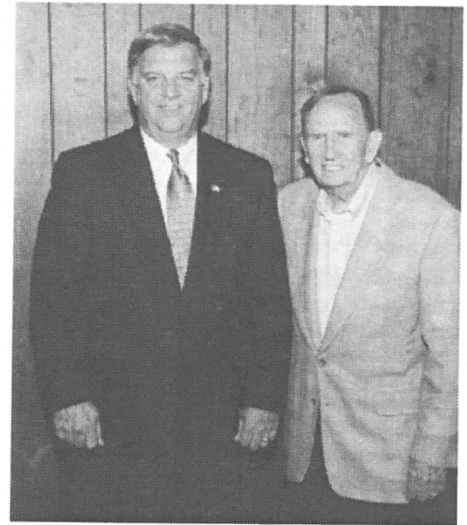
The AHTD Retiree's Association elected new officers for the year 2002 at its annual state-wide meeting held October 25, 2001 in the Hospitality House at North Little Rock's Burns Park.

Attending from the Department were: Dan Flowers, Director; Bob Walters, Chief Engineer; Jane Wilson, Chief of Administration and Public Affairs; Steve Teague, Assistant Chief Engineer for Planning; Larry Dickerson, Chief Fiscal Officer; Diann Gwatney, Insurance Representative and John Jackson, Photographer.



2002 AHTD Retiree's Association State Officers

Left to right: Don Brown, Senior Vice President; Lawrence Fletcher, State President; Larry Hollis, Vice President; Sibyl Maddox, Secretary-Treasurer; Jim Chaney, Retiree Representative to the Retirement Board of Trustees

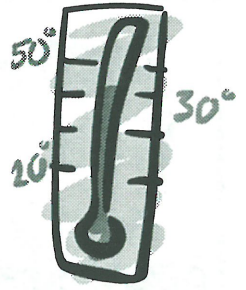


AHTD Inclement Weather Policy

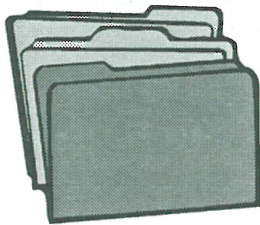
In the event Department employees are excused by official action due to inclement weather, the following policy will be in effect:

Official media notice to state agencies will apply to AHTD employees except designated essential personnel. The Inclement Weather Policy excuses employees from work until 10:00 a.m. unless specified by official media notice. Employees who report to work after the excused time will be charged leave calculated between the excused time and their arrival time. Employees who do not report to work at all will be charged for a full day's leave.

Sick leave or annual leave may be utilized for inclement weather. Leave without pay will be utilized for employees who are temporary, part-time, or in an exhausted leave status. Employees working under the flex schedule must adjust their time accordingly.



Employee Data Changes



The Department maintains certain personal information on each employee. Keeping this record current is very important. Promptly notify the appropriate Division or District personnel of any changes in your: name, home address, telephone number, number of dependents, education (courses completed and other training or skills acquired), emergency contact name and telephone number, and professional registration or certification for entry into the Department's PAHR system.

For changes in your beneficiary, contact the Retirement Office at 501-569-2412 or the Group Insurance Office at 501-569-2417, whichever is appropriate.

Catastrophic Leave Donations

Employees are reminded that vacation leave balances which exceed the maximum carry-over may be donated to the Catastrophic Leave Program. These donations must reach the Human Resources Office before March 29, 2002. For further information contact the Human Resources Office at 501-569-2296.

The AHTD

CENTERLINE

Published monthly by and for employees of the Arkansas State Highway and Transportation Department as a medium of departmental news and other information. Correspondence should be directed to the Public Affairs Office, 10324 Interstate 30, Room 1002, P.O. Box 2261, Little Rock, Arkansas 72203-2261, 501-569-2227.

ARKANSAS STATE HIGHWAY COMMISSION

JOHN "M" LIPTON, CHAIRMAN
J.W. "BUDDY" BENAFIELD, VICE CHAIRMAN
MARY P. "PRISSY" HICKERSON
JONATHAN BARNETT
CARL S. ROSENBAUM

DAN FLOWERS
DIRECTOR OF HIGHWAYS AND TRANSPORTATION

© 2001 - AHTD

Holiday Reminder

Monday, December 24 and Tuesday, December 25, 2001 are state holidays for Highway and Transportation Department employees in observance of Christmas Eve and Christmas Day.

Also, Tuesday, January 1, 2002 is a state holiday in observance of New Year's Day and Monday, January 21, 2002 is a state holiday in observance of Martin Luther King's Birthday.

All work will be suspended except for cases of emergency.

AHTD PEOPLE



NOVEMBER 2001

NEW EMPLOYEES

COMPUTER SERVICES

Larry Lewers, Apps. Analyst/Programmer IV

EQUIPMENT & PROCUREMENT

Lisa Holeman, Office Admin. Asst. I

FISCAL SERVICES

Marvlyn Underwood, Office Admin. Asst. I

HIGHWAY POLICE

Brian Henry, Permit Technician
Amanda Price, Admin. Aide I

HUMAN RESOURCES

Mary Cloud, **Billy Miles**, Gen. Laborers
Linda Cuninkin, Central Office Receptionist

INTERNAL AUDIT

Corey Key, Auditor

MATERIALS

Carl Hall, General Laborer
Deborah Tyler, **Khari Withers**, Materials Technicians I

RIGHT OF WAY

Errol Lemons, Admin. Asst. I

DISTRICT ONE

Joey Henson, Station Attendant
Anthony Burnett, **James Tyler, Jr.**, Single Axle Truck Drivers
Herbert Wiley, General Laborer

DISTRICT TWO

Shane Jackson, **Beverly Meridith**, **Adam Stephens**, **Teresa Waters**, General Laborers
Billy Cater, **Keith Etue**, Single Axle Tr. Drivers
Jeffery Byerly, Const. Helper I

DISTRICT THREE

Jimmie Bryan, Mechanic
Mack Scott, Const. Aide I

DISTRICT FOUR

Glen Beckner, Welder
Billy Horne, Mechanic
Gary Brown, **Jackie Garrison**, Multi-Axle Tr. Drivers
Virgil Faulkner, **George Manning**, Single Axle Tr. Drivers
Lance Drager, **Bradley McCurry**, **Ricky Morris**, **Mike Reed**, **Doris Bell**, General

Laborers

Emery Lawson, Civil Engineer I

DISTRICT FIVE

Jesse Henry, Single Axle Tr. Dr.
Robert Owens, **Ricky Steward**, **Effie Pasley**, **Casey Williams**, Gen. Laborers
Sheila Seymore, Const. Helper II
William Jernigan, Resident Office Tech.

DISTRICT SIX

Paul Wingfield, **John Busby**, **Labbaika Khatib**, **Dustin Werner**, **David Lackey**, **Jimmy Palmer**, **Jeffery Williams**, Single Axle Truck Drivers
Deborah Mealler, **Chantelle Peterson**, General Laborers

DISTRICT EIGHT

Debbie Anderson, **Janice Pickens**, General Laborers
Audry Emberton, **Bryen Robison**, Single Axle Truck Drs.
Paola Castellanos, Civil Engineer

DISTRICT NINE

Kelly Jurgena, **Jeff Myatt**, Multi-Axle Tr. Drs.
Roy Bryant, **Nathaniel Day**, **Terry Jones**, **Nathan Walden**, Single Axle Tr. Drs.

DISTRICT TEN

David Rorex, **Larry Harris**, **Brian Sanders**, **Willie Wilson**, **Robert Ray**, Single Axle Tr. Drivers

PROMOTIONS

CHIEF ENGINEER

Charles Martin, Civil Engineer V

COMPUTER SERVICES

Paul Dowdy, Apps. Analyst/Programmer III
Carolyn Yancy, Quality Assurance Spec. I

CONSTRUCTION

David Corbin, Estimates Technician

HIGHWAY POLICE

Barbara Cox, Division Bookkeeper

MAINTENANCE

Don Backus, **Danny Bradford**, Striping Machine Drs.
Gary Hester, **Timothy Pearce**, **Ronnie Sutherland**, Paint Transport Tr. Drs.
Anthony Cossey, Maintenance Aide II
Craig Pickering, Sign Crew Supv.
Roger Spakes, **Denny Stout**, Sign Erectors

MATERIALS

Gary Bennett, Civil Engineer IV

PLANNING & RESEARCH

Mark Evans, Pavement Mgmt. Engineer
Mark Greenwood, Engr. Research Tech. II

STATE AID

Charles Rainey, Roadway Designer

DISTRICT 1

Ernest Brown, **Skyla White**, Single Axle Tr. Drs.
Steven Bryan, Construction Helper II
Deldrick Burton, Construction Aide II
Clarence Carter, Dist. Bridge Insp. Helper
Joey Frames, Multi-Axle Tr. Driver
Joey Henson, Station Attendant
Donald Henson, Jr., Asst. Resident Engr.
Ricky Hudson, **Phil Metcalf**, Inspectors
Marilyn Johnson, Field Clerk II
Christopher Pruitt, **Thomas Rooks**, Distributor/Roller Operators

DISTRICT 2

Royce Edmondson, Mechanic
Brent Glover, Roller Operator
Latisha Reynolds, Const. Helper II
Wendol Swinney, Const. Field Engr. II

DISTRICT 3

Wade Baswell, **Danny Bottoms**, **Kermit Glasgow, Jr.**, **Brad Henley**, **Jeremy Kenzel**, **Chomsley Ricks**, **Rusty Serigne**, **Robert Smith**, **Sharon Taylor**, **Nicholas Ward**, Single Axle Tr. Drs.
Theresa Bohannon, **James Marlar**, Multi-Axle Tr. Drs.
Stephen Callicott, **William Cheatham**, Adv. Const. Field Engineer
Rodney Cole, Sr. Const. Materials Insp.
Robert Laughard, **Charles Tallman, Jr.**, Sr. Inspectors
Larry Otwell, Bridge Repairer I
Charles Rogers, Inspector
Connie Staggs, Motor Patrol Operator

DISTRICT 4

Dwayne Adams, Asst. Resident Engr.
Herbert Barker, **Cody Holland**, Const. Aides I
Leslie Barnett, **Jerry Hunsucker**, Sr. Insp.
Belinda Canada, **Jessica Smith**, Distributor/Roller Operators
Louis Edwards, **Russell Hale**, Multi-Axle Tr. Drivers
Kevin Gregory, Welder

Julie Mullins, Inspector
Brent Slater, Dist. Br. Inspector Helper
Bobbi Smith, Single Axle Tr. Driver

DISTRICT 5

Raymond Covey, Sr. Inspector
Jerry Crosby, Inspector
Pamala Hays, Resident Office Tech.
David Smith, Station Attendant II
Brian Stone, Maint. Aide II

DISTRICT 6

Melvin Fisher, Sr. Const. Materials Insp.
Marshall Jenkins, Backhoe/Front End Loader Opr.
Tommy Manning, Maint. Aide I
J. Rogers, Adv. Const. Field Engr.
Mark Simecek, Const. Field Engr. II
William Williams, Maint. Aide II

DISTRICT 7

Rickey Anderson, **Matthew Jackson**, Single Axle Tr. Drivers
Robert Berry, Distributor/Roller Opr.
Ginger Crain, Const. Aide II
John Lum, Maint. Aide II
Deborah Purifoy, Distributor Opr.
Jermy Purifoy, Street Sweeper Opr.

DISTRICT 8

Bruce Bryan, Single Axle Tr. Dr.
Roselie Conley, Const. Aide II

DISTRICT 9

James Delk, Distributor/Roller Opr.
Scott Graham, Bridge Repairer I
Russell Morgan, Backhoe/Front End Loader Opr.
Ronald Stanfill, Area Maint. Supv.
Thomas Taylor, Crew Leader

Tammy Vanderwaal, Maint. Aide I

DISTRICT 10

Glenda Gramling, **Lavelle Terrell**, Sr. Insp.
Dustin Miller, Bridge Repairer I

SERVICE

45 YEARS

Jerry Stacks, Materials Lab. Coord.

35 YEARS

Doye King, Surveys Specialist

30 YEARS

Ann Harrell, Const. Estimates Tech.
James Brown, Surveys Aide III
Thomas Simmons, D2 Asst. Maint. Supt.

25 YEARS

Franklin House, D6 Maint. Aide II
Hershel Nelson, D10 Guard

20 YEARS

Debbie Caster, D4 Office Manager
Lloyd Stone, D9 Deck Hand

15 YEARS

Michael Creamer, Materials Geotechnical Drill Operator
Bennie Horn, Surveys Aide II
Kenneth Gentry, D3 Crew Leader
Carl Burleson, D5 Area Hdqtrs. Attendant
Steven Talley, D6 Crew Leader

10 YEARS

Eddie Tanner, Training & Safety Insp. Officer

Wanda Ashley, Human Resources Internal EEO Coordinator
Dawn Richards, Materials Section Head
Willie Martin, D3 Sign Erector
John Jarrett, D10 Sr. Mechanic

5 YEARS

Paul Dowdy, Computer Services Apps. Analyst/Programmer III
Amy King, Roadway Design Engineer
Michael Mohler, Surveys Tech. II
Gerry Washington, D1 Maint. Aide II
Brenda Ewans, Single Axle Tr. Dr.
Saul King, D2 Dozer Opr./Finish
Ruth Moody, D5 Multi-Axle Tr. Dr.
Carl Efird, D6 Backhoe/Front End Loader Opr.
James Hays, D8 Const. Field Engr. II
Mary Scott, D8 Distributor/Roller Opr.
Cindy Counts, D10 Maint. Aide I

RETIREMENTS

William Wall, Materials Bituminous Engineer, retired November 14 with 32+ years

Barbara Munnerlyn, District 5 Receptionist, retired November 14 with 19+ years

John Bridgeman, D5 Distributor/Roller Operator, retired November 28 with 12+ years

John Kruse, District 6 Caretaker, retired November 16 with 28+ years

Harold Mosley, District 7 Crew Leader, retired November 30 with 23+ years

ACTIVE EMPLOYEES WITH LONGEST SERVICE AS OF NOVEMBER 30, 2001

1. Patsy Downing E&P Administrative Aide I 47 years, 03 months
2. Fidelis Koelzer D3 Construction Project Coordinator 45 years, 06 months
3. Thomas Kinslow D8 Maintenance Superintendent 45 years, 04 months
4. Jimmy Wynn D7 Construction Project Coordinator 45 years, 03 months
5. Vernon McMahan D6 Senior Inspector 45 years, 02 months
6. Jerry Stacks Materials Laboratory Coordinator 45 years, 01 months
7. Donald Embry D3 Hydraulic Excavator Operator/Finish 44 years, 06 months
8. Don Stovall D6 Assistant Maintenance Supt. 44 years, 01 months
9. Jake Clements Materials Staff Geotechnical Officer 43 years, 07 months
10. Calvin George D1 Maintenance Superintendent 43 years, 03 months
11. Donald Beard D7 Construction Project Coordinator 43 years, 01 months
12. Wilbert Chapman State Aid Assistant Division Head 43 years, 01 months
13. Coy Campbell D7 Engineer 42 years, 03 months
14. Dale Loe Assistant Chief Engineer for Design 42 years, 03 months
15. Bill Mulhollen Assistant State Maintenance Engineer 42 years, 00 months
16. Jimmy Rainwater D8 Senior Inspector 41 years, 11 months
17. Edward Ferguson D1 Senior Inspector 41 years, 06 months
18. Larry Hodnett D9 District Maintenance Supt. 41 years, 03 months
19. James Paine D8 Resident Office Technician 41 years, 03 months
20. Grady Rose D4 Construction Project Coordinator 41 years, 01 months