



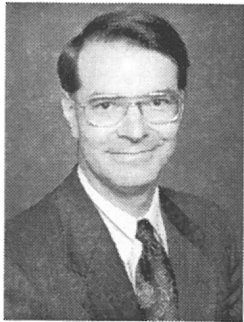
Rebuilding Arkansas Interstates

ARKANSAS STATE HIGHWAY AND TRANSPORTATION DEPARTMENT

CENTERLINE

VOLUME 11, NUMBER 10 • SEPTEMBER 26, 2002

Teague and Vozel Promoted with Department's Reorganization



Teague

Steve Teague, Assistant Chief Engineer for Planning, assumed the position of Assistant to the Director for Program Management effective August 29, 2002.

Teague has a bachelor's degree in civil engineering from the University of Arkansas at Fayetteville. He graduated in 1971 and is a registered professional engineer.

He began his career at AHTD in 1971. He has previously served as a research engineer, Section Head of Programming and Scheduling, and Division Head of the Programs and Contracts Division.

In his new position, Teague will coordinate the Department's long- and short-range construction programs and coordinate development of the State-wide Transportation Improvement Program. He will oversee the divisions

of Equipment & Procurement, Fiscal Services, and Programs & Contracts, as well as the offices of Human Resources, Public Affairs, and Training & Safety.

Frank Vozel, Division Head of Programs and Contracts, has been promoted to Assistant Chief Engineer for Planning effective August 29, 2002.



Vozel

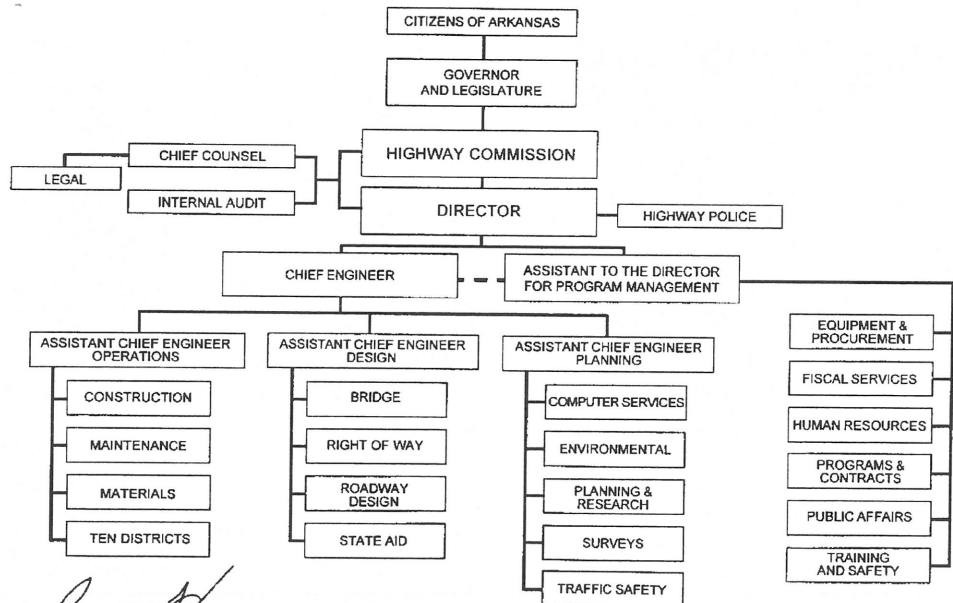
Vozel is a 1970 graduate of the University of Arkansas at Fayetteville.

He earned a bachelor's degree in civil engineering and is a registered professional engineer.

Upon graduation, Vozel began his career with AHTD in the Traffic Division. In 1974, he promoted to Section Head of Highway Safety and was named Section Head of Traffic Engineering in 1976. In 1977, he advanced to Assistant Division Head of the Traffic Division and was the Arkansas Highway Safety Program coordinator. In 1994, he was promoted to Division Head of Programs and Contracts.

A new organizational chart for the Department, effective August 29, 2002, is shown below.

ARKANSAS STATE HIGHWAY AND TRANSPORTATION DEPARTMENT ORGANIZATION CHART



What's Inside

Promotions	2
ARTBA Award	2
Insurance Meetings	3
State Travel Card	3
AHTD People	4

Lawrence Howers
DIRECTOR OF HIGHWAYS AND TRANSPORTATION

8-29-2002
Date

Hoppe promoted to P&C Division Head; Meadors to P&R Assistant Division Head

Ed Hoppe, Assistant Division Head of Programs and Contracts, was named Division Head effective September 5, 2002.



Hoppe

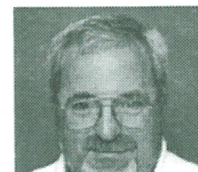
Hoppe holds a bachelor's degree in civil engineering from Memphis State University and is a registered professional engineer.

His career with the Department began in 1975 as a Civil Engineer I. In 1984, he promoted to Staff Surveys Engineer and in 1988 was promoted to Assistant Division Head of Programs and Contracts. He transferred to the Planning and Research Division in 1988 as Assistant Division Head.

Alan Meadors, Staff Research Engineer, has been promoted to Assistant Division Head of Planning and Research. Meadors has a master's and a bachelor's degree in civil engineering

from the University of Arkansas and is a registered professional engineer.

He began his career with the Department in 1980 as a Civil Engineer. In 1983, he was promoted to Research Study Engineer and in 1988 to Research Program Engineer. He advanced to Staff Research Engineer in 1989.



Meadors

American Road & Transportation Builders Association recognizes Arkansas' Interstate Highway System

The American Road & Transportation Builders Association (ARTBA) has selected the Interstate Highway System and the McClellan-Kerr Arkansas River Navigation System as Arkansas' top two transportation infrastructure projects of the twentieth century. The selections were announced August 23, 2002.

ARTBA, which celebrates its 100th

Anniversary this year, conducted a nationwide survey to identify the top transportation infrastructure projects and public officials of the past century. The survey was sent to members of Congress, the nation's governors, state transportation department heads, newspaper editors, state and local chambers of commerce executives and college history professors. Five thousand submittals were received and only two projects in each of the fifty states were recognized.

The Interstate Highway System was recognized for its instrumental role in improving the economy of Arkansas. The 655-mile Interstate System comprises four percent of the State Highway System, but carries approximately 31 percent of all highway traffic.

The Interstate Highway System has been instrumental in linking the rural and

urban portions of Arkansas. Because of the Interstate highways, personal mobility between rural and metropolitan areas has enhanced the lifestyles of many state residents while improving their access to health care, education and other contributors to a better life and stronger economy.

The McClellan-Kerr Arkansas River Navigation System, completed in 1971, has transformed 445 miles of river into a major economic asset for both Arkansas and Oklahoma.



Bob Walters accepts the ARTBA award from Kelly Meachum.

The AHTD

CENTERLINE

Published monthly by and for employees of the Arkansas State Highway and Transportation Department as a medium of departmental news and other information. Correspondence should be directed to the Public Affairs Office, 10324 Interstate 30, Room 1002, P.O. Box 2261, Little Rock, Arkansas 72203-2261, 501-569-2227.

ARKANSAS

STATE HIGHWAY COMMISSION

JOHN "M" LIPTON, CHAIRMAN

J.W. "BUDDY" BENAFIELD, VICE CHAIRMAN

MARY P. "PRISSY" HICKERSON

JONATHAN BARNETT

CARL S. ROSENBAUM

DAN FLOWERS

DIRECTOR OF HIGHWAYS AND TRANSPORTATION

© 2002 - AHTD

Group Health Insurance Enrollment Meetings

A series of informational meetings will be conducted in October for enrollment to the State and Public Employees Insurance Program for the calendar year 2003.

The five different plans available are: Blue Cross Blue Shield Preferred Provider Organization (PPO); Health Advantage or QualChoice Point-of-Service (POS); and Health Advantage or

QualChoice Health Maintenance Organization (HMO).

All employees are encouraged to attend one of these meetings. National Guard Armory locations are subject to change.

Insurance Meeting Schedule

AHTD Central Office Little Rock

Monday, October 14
9:00 a.m. or 1:00 p.m.

or

Monday, October 21
9 a.m. or 1:00 p.m.

AHTD Central Office Auditorium
10324 Interstate 30, Little Rock

District 1/Wynne and AHP District 5

Wednesday, October 16
9:00 a.m. or 1:00 p.m.

National Guard Armory
305 E. Helen St., Wynne

District 2/Pine Bluff and AHP District 1

Tuesday, October 22 • 8:00 a.m.
National Guard Armory, Grider Field
Road, Pine Bluff

or

Tuesday, October 22 • 1:00 p.m.
University of Arkansas at Monticello

District 3/Hope and AHP District 4

Thursday, October 24
9:00 a.m. or 1:00 p.m.

National Guard Armory
I-30 and Hwy. 278, Hope

District 4/Fort Smith and AHP District 3

Tuesday, October 9 • 9:00 a.m. or 1:00 p.m.

District 4 Headquarters
4019 Towson Avenue, Fort Smith

District 5/Batesville and AHP District 2

Tuesday, October 17 • 8:30 a.m. or 1:00 p.m.

District 5 Headquarters
1673 Batesville Blvd., Batesville

District 6/Little Rock and AHP District 1

Monday, October 7 • 8:30 a.m. or 1:00 p.m.

AHTD Central Office Auditorium
10324 Interstate 30, Little Rock

District 7/Camden and AHP District 4

Wednesday, October 23 • 9:00 a.m. or 1:00 p.m.

Technical Engineering Center Auditorium
Southern Arkansas University, East Camden

District 8/Russellville and AHP District 2

Wednesday, October 10 • 8:30 a.m. or 1:15 p.m.

District 8 Headquarters
370 Aspen Lane, Russellville

District 9/Harrison and AHP District 3

Tuesday, October 8 • 9:00 a.m.

District 9 Headquarters
4590 Highway 65, Harrison

or

Tuesday, October 8 • 2:30 p.m.
Rogers National Guard Armory
1408 South First Street, Rogers

District 10/Paragould and AHP District 5

Tuesday, October 15 • 9:00 a.m. or 1:00 p.m.

District 10 Headquarters
2510 Kingshighway, Paragould

New State of Arkansas Travel Card to Replace American Express Corporate Card

The State of Arkansas has negotiated for a new travel card that will be issued by UMB Bank of Missouri. This card will replace the American Express Card many employees currently carry.

The new program will differ slightly from the one administered through American Express. The new card will be restricted to use for meals, lodging and car rental. Unlike the American Express Card the new travel card is not issued for personal use. The card must be used for official AHTD travel related expenses only. However, like the American Express Card the employee is responsible for payment of all charges made to the card, not the AHTD.

Each Division Head and District Engineer has submitted a list of employees that they believe travel frequently enough to warrant applying for the new travel card. Everyone must apply for the new card. Just because an employee has an American Express card does not mean they will be issued one of the new travel cards. The AHTD will send the list of employees to UMB and they will send the employee a letter and application form that must be filled out and returned to UMB for processing. UMB will have the final say as to whether or not an employee's salary and credit history warrant issuance of a new travel card.

The new card will be a VISA card, but unlike a personal VISA account, the balance must be paid in full each month. The agreement with UMB requires any account that has a balance 60 days or more past due be cancelled. Once a card is cancelled for this reason it will not be reissued.

If an employee retires, terminates, or transfers to another state agency, the card issued through the AHTD will be cancelled. If an employee transfers to another state agency, that agency must approve issuance of a travel card to the employee.

The American Express Card will eventually be cancelled for all employees. The exact date of cancellation is not known at this time. Both the State of Arkansas and American Express are supposed to give a 30-day written notice before cancellation of the program.

AHTD PEOPLE

DATA FOR AUGUST 2002

NEW EMPLOYEES

BRIDGE

Dallas Stevens, Civil Engineer I

MATERIALS

Justin Tyler, General Laborer

ROADWAY DESIGN

Erica Michael, Civil Engineer

DISTRICT THREE

John King, Skill Trades Trainee

DISTRICT FOUR

Tabitha Hornback, General Laborer

DISTRICT SIX

Margaret Farrish, General Laborer
David Poe, Single Axle Truck Driver

DISTRICT SEVEN

Robert Delgado, District Caretaker

DISTRICT EIGHT

Donald Morgan, Daniel Womack, Rest Area Attendants

DISTRICT TEN

Alicia Simpson, Resident Office Tech.

PROMOTIONS

BRIDGE

Phil Brand, Division Head
Carl Fuselier, Assistant Division Head

ENVIRONMENTAL

Robert Fuhler, Staff Administrative Assistant

EQUIPMENT & PROCUREMENT

Annette Swift, Administrative Aide I

MAINTENANCE

Clifford Roland, Heavy Bridge Crew Leader
David Waters, Lowboy or Float Truck Dr.

MATERIALS

Steve Davidson, District Lab. Tech.
Thomas Sturch, Materials Tech. IV

PLANNING & RESEARCH

Ed Flanagan, Administrative Officer II

ROADWAY DESIGN

Rita Haynes, Roadway Designer

SURVEYS

Virgil Butler, III, Surveys Crew Chief

STATEAID

Bryan Brock, James McLeod, Senior Designers

DISTRICT 1

Floyd Frazier, Shop Supervisor
Charles White, Bridge Repairer II

DISTRICT 2

Chad Adams, Tim Kelly, Resident Engineers
Kirk Chidester, Crew Leader
Jimmy Kendall, Jr., Backhoe/Front End Loader Opr.
Steve Sites, Motor Patrol Operator/Finish

DISTRICT 3

Stephen Callicott, William Cheatham, Assistant Resident Engineers
Earl Scott, Ricky Williams, Maintenance Aides II

DISTRICT 4

Esther Hamm, Area Hdqtrs. Attendant
Lewis James, Bridge Repairer II

DISTRICT 5

Karrie Ausbrooks, Sandra Hartsell, Bobby Manor, Linda Mitchell, Rebecca Prange, Single Axle Truck Drivers
Angela Cantu, Resident Office Tech.
Stephen Clark, Billy Wallace, Dist./Roller Oprs.
V. Gammill, Multi-Axle Truck Driver
Gregory Hellman, Inspector

DISTRICT 6

Mark Crumpton, Construction Aide III
Bobby Gold, Backhoe/Front End Loader Opr.
Gary Golden, Equipment Maintenance Supv.
Stephen Morgan, Senior Inspector
James Smith, Inspector
William Taylor, Maintenance Aide I
Jerry Trotter, Resident Engineer

DISTRICT 7

James Caldwell, Crew Leader
Justin Green, Roberto Hernandez, Single Axle Truck Drivers
James Johnston, Bridge Repairer I
Rhonia Krisell, Personnel Clerk
Noah Welch, Distributor/Roller Operator

DISTRICT 8

Gary Buzbee, Marcus Rainwater, Assistant Resident Engineers
Donna Chronister, Field Clerk II
Scott Craig, Single Axle Truck Driver
Gary Dorrough, Resident Office Tech.
David Tolleson, Resident Engineer

DISTRICT 9

Roy Bryant, Backhoe/Front End Loader Opr.
John McIntare, Motor Patrol Operator/Finish

DISTRICT 10

David Cooper, Crew Leader

SERVICE

35 YEARS

Harold Smith, D2 Motor Patrol Opr./Finish

30 YEARS

Abram Wylie, Bridge Senior Design Engineer
Jim Gaither, Right of Way Division Head
Allen Bullock, D2 Area Maintenance Supv.
David Neighbours, D5 Sr. Const. Materials Engr.

25 YEARS

Joe Shipman, D4 Construction Engineer
David Bishop, D5 Backhoe/Front End Loader Opr.
William Storment, D8 Sealing Job Supt.

20 YEARS

Deborah Mathis, Bridge Senior Design Engr.
Allen Ederington, D7 Crew Leader
Jeff Venable, D7 Resident Engineer

15 YEARS

Kenneth King, AHP Permit Technician
Carolyn Yancy, Computers Quality Assur. Spec. I
Dawn Townsend, Legal Aide
Mark Greenwood, P&R Engineering Research Technician II
James Braden, ROW Relocation Coordinator
Ken Jordan, Training & Safety Section Head
Otis Fleming, Jr., D1 Maintenance Aide II
James Wallace, D1 Crew Leader
Jeff Otis, D3 Paver Operator
David Wilson, D6 Parts Runner
Jeffrey Williams, D6 Senior Inspector
David Tolleson, D8 Resident Engineer

10 YEARS

Terry Kirtley, Materials Chemist III
Elizabeth Mayfield-Hart, P&R Trans. Planning Engineer
Margaret Donnelly, P&R Office Admin. Asst. III
Tara Robinson, T&S Training Coordinator
Linda Williams, D4 Field Clerk II
Terral Scroggins, D4 Lowboy or Float Tr. Dr.
David Smith, D5 Station Attendant II
Dustin Westmoreland, D5 Crane Opr./Finish
Gary Collatt, D6 Const. Aide II
Larry Wilson, D8 Const. Aide I
Donna Chronister, D8 Receptionist
Gordon Parham, D8 Maint. Aide II
Dorothy Winstead, D10 Parts Runner
Patricia Pickett, D10 Single Axle Tr. Dr.
Rex Vines, D10 Resident Engineer

5 YEARS

Becky Smith, Maintenance Admin. Aide III
Trinity Smith, Roadway Design Engineer
Dena Robinson, D1 Multi-Axle Truck Dr.
David Reed, Sr., D2 Distributor/Roller Opr.
Connie Staggs, D3 Motor Patrol Opr.
Mary Green, D3 Guard
Steve Hadley, D5 Single Axle Truck Dr.
Charlotte Stanley, D7 Maintenance Aide I
Dorothy Ledford, D8 Street Sweeper Opr.
Rebekah Neighbours, D8 Field Clerk II
Dennis Birge, D9 Adv. Const. Field Engr.

RETIREMENTS

Skipper Bosley, Fiscal Services Coordinator, retired August 1 with 32 years

Mary Graham, Right of Way Negotiator, retired August 16 with 32 years

William Stone, Jr., Arkansas Highway Police Motor Carrier Safety Inspector, retired August 26 with 13 years

Jim Groning, Arkansas Highway Police 2nd Lieutenant, retired August 20 with 19 years

Jane Wilson, Chief of Administration and Public Affairs, retired August 28 with 21 years

Ed Fain, Bridge Division Head, retired August 14 with 32 years

Randall Cato, District 3 Motor Patrol Operator/Finish, retired August 6 with 28 years

George Gennings, District 3 Crew Leader, retired August 20 with 28 years

Travis Glass, District 7 Motor Patrol Operator/Finish, retired August 22 with 22 years

Kenneth Whitney, District 9 Motor Patrol Operator/Finish, retired August 9 with 28 years

Troy Charles, District 10 Single Axle Truck Driver, retired August 26 with 9 years