



Center Line

Arkansas State Highway and Transportation Department • August 24, 2006

AHTD Hosts Students and Interns

The AHTD Central Office had the opportunity to play host to several groups of students and interns over the summer months. The goal for each group was to learn more about the operations of the Highway and Transportation Department and what is involved in maintaining the state's network of highways.

High school seniors attending the **American Legion Boys State** made a visit to the Department on June 9th. Boys State is a six-day training course in study and practical application of problems of self-government. It is planned so that young people can apply theories of government by participating in the operation of city, county and state offices. Fifteen delegates spent time learning more about the structure of the AHTD and how it operates. The morning began with an overview of the Department and a question-and-answer session with Public Affairs Specialist David Nilles. At the Materials Lab, delegates had an opportunity to examine asphalt samples and see how asphalt is tested for durability. Tests of concrete and tensile strength were also observed.

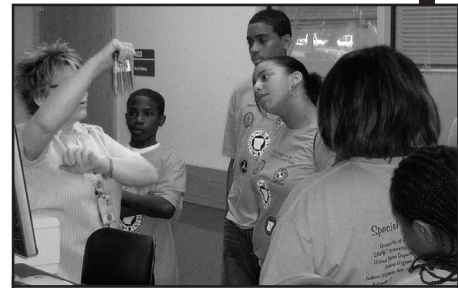
A group of teenagers attending the **National Summer Transportation Institute** visited the Department June 13th and 14th. The Institute offers a four-week introduction to all modes of transportation and the various careers available to young people upon graduation from school. Students apply for the program through their local schools. Their visit to the AHTD began with a trip to the Materials Lab in Little Rock. Chris Wald hosted the students on a tour to learn more about tests that the Department runs on different types of soils, the importance of knowing the strengths of core samples and how vehicle fuels can be tested. At the Central Office,

Joe Haynie spent time with the students to discuss highway safety. The day ended with a visit from Arkansas Highway Police Officers Kreston Taylor and Anita Ray, and the opportunity to get a close up look at the Infrared Brake Inspection van and a Highway Police patrol car. The next day, AHTD Senior Bridge Design Engineer Jeff Covay and Bridge Design Engineer Holly Thomas traveled to the University of Arkansas at Pine Bluff to do a presentation for the students on how to build a bridge. Students also heard from Assistant Resident Engineer Johnathon Mormon on an "Engineer's Perspective" and Advanced Research Study Engineer Dorothy Rhodes on Intelligent Transportation Systems. The Summer Transportation Institute is one of several educational initiatives of the U.S. Department of Transportation.

On July 17th and 18th, the AHTD welcomed its summer engineering interns to the Central Office for the 2006 **Engineering Student Intern Orientation**. The internship program provides AHTD internships to college students in order to enhance their knowledge of the transportation industry and to encourage them to continue their interest in an engineering career. Eight universities were represented by the 40 interns in attendance. Participants gained insight into the Administrative, Operations, Design and Planning Branches of the Department. They also learned more about career opportunities at the AHTD and benefits of employment with the Department. On their second day, interns toured the Roadway Design, Materials, Construction, Planning & Research, and Bridge Divisions. The AHTD is the largest employer of civil engineers in the state of Arkansas.



Boys State delegates examine a test of concrete strength with Chris Wald, Civil Engineer II.



Dawn Richards, (left), Section Head, Materials Lab, explains how the AHTD tests fuel samples.



Senior Design Engineer Kevin Toblesky talks with interns about roadway design.

The Staff Minute	2
Highway History	2
Where Is This?	2
National Preparedness Month.....	3

Emergency Supply List	3
2007 Insurance Rates and Updates	4
Around the Department	5
AHTD People	6

The Staff Minute



Employee: Carl White, Lawrence County Crew, District 10

Job Position: Maintenance Aide II

Length of Service: 36 years and 9 months

Job Duties: My job duties include coordinating a work crew and completing assigned maintenance jobs. I'm usually in charge of placing work signs in the job area to make

a safe work zone. I also see that preventive maintenance checks are made on the equipment we use and help make repairs that are needed.

Favorite part of the job: The best part of my job is that I get to work with all the members of my crew. I also get to work on all types of maintenance jobs that county crews perform.

Background: I started as a laborer on the Lawrence County Maintenance Crew and after five years I transferred to the Walnut Ridge Resident Engineer Office. I worked there for six years and when that office closed, I transferred back to the Lawrence County Maintenance Crew and have been there since 1980.

Family: My wife of 31 years, Freddie Jo, is a full time grandmother of four grandkids. I also have one son, Byron.

Hobbies/Interests: I have been a volunteer fireman with the Walnut Ridge Volunteer Fire Department for 37 years. I am now the assistant chief and I enjoy doing everything that volunteer firemen do, not only fighting fires, but also fire prevention education with the school kids and other fire safety training.

October 13 - 22, 2006



The Highway and Transportation Department will be hosting a booth at the State Fair again this year. Department employees are invited to bring their families by the Hall of Industry to visit the booth. We will be distributing highway maps, litter bags and other information.

Labor Day Holiday

Monday, September 4th, is a state holiday for Arkansas State Highway and Transportation Department employees in observance of Labor Day. All work will be suspended except for cases of emergency.

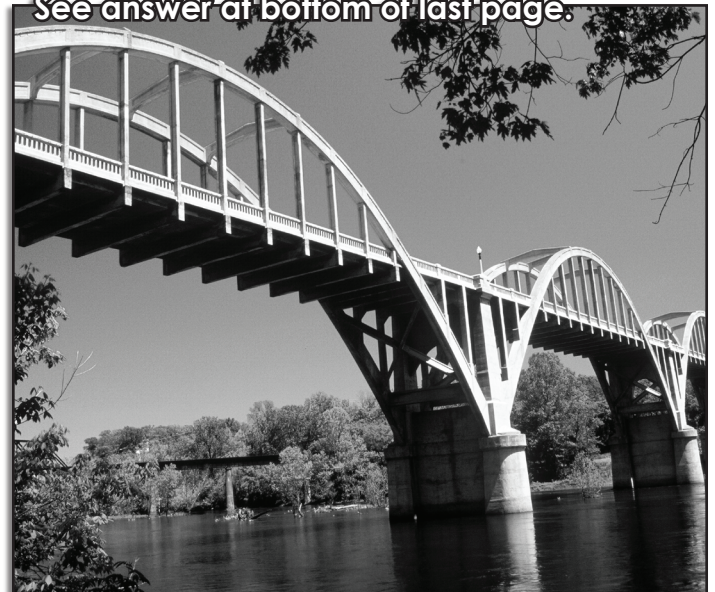
Highway History



Slip form paving on Interstate 30 near Hope as seen from the Highway 4 overpass in 1970.

Where Is This?

See answer at bottom of last page.



September is...
**National
Preparedness
Month** Get a Kit, Make a Plan,
Be Informed and
Get Involved

The Department is currently in the process of developing a Continuity of Operations (COOP) Plan to be utilized in the event of a disaster. One of the major concerns is the safety of employees and their families during times of crisis.

September is National Preparedness Month. This is a good time to provide you with information on how to prepare your family for any disaster. Information is available via the Internet and in the lobbies of the Districts and Central Office.

- **Get a Kit** - Get a kit of emergency supplies that will allow you and your family to survive for at least three days in the event an emergency happens. The kit should include basic items like water, food, battery-powered radio, flashlight and a first aid kit.
- **Make a Plan** - Plan in advance what you and your family will do in an emergency. Your plan should include a communications plan and evacuation plan.
- **Be Informed** - Learn more about different threats that could affect your community and appropriate responses to them.
- **Get Involved** - After preparing yourself and your family for possible emergencies, take the next step: get training in first aid and emergency response and get involved in preparing your community. Citizen Corps provides residents with opportunities to prepare, train and support local emergency responders.

Emergency Supply List

Flashlight with extra batteries

Use the flashlight to find your way if the power is out. Do not use candles or any other open flame for emergency lighting.

Battery-powered radio

News about the emergency may change rapidly as events unfold. You also will be concerned about family and friends in the area. Radio reports will give information about the areas most affected.

Food

Enough non-perishable food to sustain you for at least one day (three meals) is suggested. Select foods that require no refrigeration, preparation or cooking, and little or no water. The following items are suggested:

- Ready-to-eat canned meals, meats, fruits, and vegetables.
- Canned juices.
- High-energy foods (granola bars, energy bars, etc.).

Water

Keep at least one gallon of water available, or more if you are on medications that require water or that increase thirst. Store water in plastic containers such as soft drink bottles. Avoid using containers that will decompose or break, such as milk cartons or glass bottles.

Medications

Include usual non-prescription medications that you take, including pain relievers, stomach remedies, etc. If you use prescription medications, keep at least three-day's supply of these medications at your workplace. Consult with your physician or pharmacist how these medications should be stored, and your employer about storage concerns.

First Aid Supplies

- Sterile gloves
- Sterile dressings
- Cleansing agent
- Antibiotic ointment
- Burn ointment
- Adhesive bandages
- Eyewash solution
- Thermometer

Tools and Supplies

- Emergency "space" blanket (Mylar).
- Paper plates and cups, plastic utensils.
- Non-electric can opener.
- Personal hygiene items, including a toothbrush, toothpaste, comb, brush, soap, contact lens supplies, and feminine supplies.
- Plastic garbage bags, ties (for personal sanitation uses).
- Include at least one complete change of clothing and footwear, including a long sleeved shirt and long pants, as well as closed-toe shoes or boots.
- If you wear glasses, keep an extra pair with your workplace disaster supplies.

To learn more about how you and your family can prepare for emergencies or get involved visit:
www.ready.gov or www.citizencorps.gov



Arkansas Department of
Emergency Management
&
Arkansas Citizen Corps
PO Box 758, Conway, AR 72033
(501) 730-9750



2007 Insurance Rates & Updates

The Employee Benefits Division (EBD) has published the 2007 State Employees Group Health Insurance Rates, which begin in January of 2007 (see chart below). AHTD active employees will see the new rates beginning on their December paychecks.

The health program is "self-insured," which means that your premiums and other contributions are paid to EBD to fund claims and administrative costs. Even so, each benefit coordinator's (Blue Cross, Health Advantage, NovaSys Health and QualChoice) plan options are rated separately to determine the next year's premiums. Many factors impact the rate calculation, but most important are the past year's total "claims dollars paid" and administrative costs. As a result, differences can

arise among each company's annual rate increases based on their cost management strategy and provider contracts, even within our standard benefit coverage rules.

For employees interested in changing plans or benefit coordinators, there is an annual open enrollment period in October.

Keep in mind that EBD's voluntary Health Risk Assessment (HRA) program will again provide the opportunity for active employees to receive a discount on their insurance premiums by taking a health survey. This will be the third year for the HRA survey and the information gathered from participating members has proven to be valuable. This year, active employees will have the entire month of October to complete the survey. New enrollees have

the opportunity upon benefits selection. The survey will be available on the Internet or by telephone.

The survey has been enhanced this year and includes an extensive wellness report that is available immediately upon completion of the Internet survey. The report will include specific information about wellness resources available through our health plan.

All HRA participants will earn a \$5 per pay period discount just for taking the survey, with all health factors, not just tobacco use, being considered for an additional \$5 off per pay period. More information about the HRA will be included in the Health Insurance Enrollment Guide. The guide is scheduled to be mailed to employee homes this fall prior to the open enrollment period in October.

BI-WEEKLY HEALTH PREMIUMS FOR ACTIVE EMPLOYEES Deducted Twenty-Four (24) Times A Year

EFFECTIVE JANUARY 1, 2007	Blue Cross / Blue Shield	Health Advantage		Qual Choice		NovaSys			High Ded.
	PPO	POS	HMO	POS	HMO	PPO	POS	HMO	PPO
Empl. Only									
No Survey	107.59	47.41	43.58	66.82	59.72	103.45	43.71	39.88	21.38
One Level 1	102.59	42.41	38.58	61.82	54.72	98.45	38.71	34.88	16.38
One Level 2	97.59	37.41	33.58	56.82	49.72	93.45	33.71	29.88	11.38
Empl. & Spouse									
No Survey	310.30	165.87	156.67	212.43	195.40	300.36	156.99	148.11	103.37
One Level 1	305.30	160.87	151.67	207.43	190.40	295.36	151.99	143.11	98.37
One Level 2	300.30	155.87	146.67	202.43	185.40	290.36	146.99	138.11	93.37
Two Level 1	300.30	155.87	146.67	202.43	185.40	290.36	146.99	138.11	93.37
One Level 1, One Level 2	295.30	150.87	141.67	197.43	180.40	285.36	141.99	133.11	88.37
Two Level 2	290.30	145.87	136.67	192.43	175.40	280.36	136.99	128.11	83.37
Empl. & Children									
No Survey	178.55	88.28	82.52	117.38	106.73	172.34	82.73	77.08	49.21
One Level 1	173.55	83.28	77.52	112.38	101.73	167.34	77.73	72.08	44.21
One Level 2	168.55	78.28	72.52	107.38	96.73	162.34	72.73	67.08	39.21
Family									
No Survey	347.18	187.70	177.55	239.13	220.31	336.20	177.90	168.11	118.68
One Level 1	342.18	182.70	172.55	234.13	215.31	331.20	172.90	163.11	113.68
One Level 2	337.18	177.70	167.55	229.13	210.31	326.20	167.90	158.11	108.68
Two Level 1	337.18	177.70	167.55	229.13	210.31	326.20	167.90	158.11	108.68
One Level 1, One Level 2	332.18	172.70	162.55	224.13	205.31	321.20	162.90	153.11	103.68
Two Level 2	327.18	167.70	157.55	219.13	200.31	316.20	157.90	148.11	98.68

PLEASE NOTE:

- The listed premiums do not include any life insurance.
- **"One"** – Employee
- **"Two"** – Employee and spouse
- **"Level 1"** – Took the survey
- **"Level 2"** – Survey indicates a healthy lifestyle

AROUND THE DEPARTMENT

ARKANSAS HIGHWAY AND TRANSPORTATION DEPARTMENT



District 8: Troy Brown, Senior Inspector, retired recently with 35+ years of service. His co-workers threw a party and showered him with "gifts."



Arkansas Highway Police: (l. to r.) SGT Jeff Bickerstaff presented PFC Joy Bean with her 5-year service award.



District 2: Receiving their service awards were (l. to r.) Stanley Tripp, Sealing Crew Operator, 10 years; and Ray Spears, Sealing Crew Leader, 20 years.



District 10: Shrena Wallace, daughter of Jimmy Adams, Maintenance Aide II, graduated from Osceola High School in May. She is pictured with her son Jermaine Brown, Jr.



District 2: (l. to r.) Brian Wells, Crew Leader, receives his 20-year service award from Harlon Colbert, Area Maintenance Supervisor.



Arkansas Highway Police: (l. to r.) 1LT Ronnie Elmore, Assistant District Commander of AHP District 3, received his 35-year service award and retired in April. Presenting the service award was Capt. Glen Holloway.



District 8: Bob Stithem, Maintenance Aide I, retired in April with 28+ years with the Department.



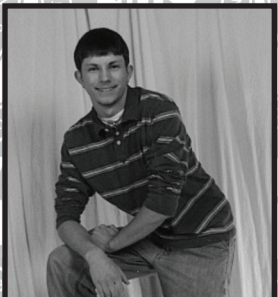
Right of Way: Trish Lynn, Right of Way Negotiator, holds her new grandson, Landon. He was born July 21, weighing 6 lbs., 10 oz.



Equipment & Procurement: (l. to r.) Frank Vozel, Assistant to the Director, presents Danny Keene, E & P Division Head, with his 20-year service award.



Arkansas Highway Police: (l. to r.) CPL Jim Acord receives his 20-year service award from Capt. Glen Holloway.



District 8: Cody W. Chronister, son of Keith Chronister, Finish Hydraulic Excavator Operator, graduated in May from Hector High School. He will attend the University of Arkansas Community College at Morrilton.



District 7: (l. to r.) Elma Thompson and Robert Hunter recently retired from the District Bridge Crew where they each held the title of Bridge Repairer II. Elma retired with 28+ years of service. Robert retired with 20+ years of service.



District 4: (l. to r.) Larry Thornburg, Area Maintenance Supervisor, presents Terry Emerson, Motor Grader Operator, with his 20-year-service award.



District 2: (l. to r.) Ezra McFadden, Sr., Area Maintenance Supervisor, presents Kathy Foster, Motor Patrol Operator, with her 10-year service award.



Legal: Ted Blagg, Staff Attorney, was treated to a party by his co-workers, celebrating his 40 years as an attorney. He has been with the AHTD since February 2001.



Maintenance: (l. to r.) Kevin Purifoy, Communications Section Head, presents Jesse Koenigsberg, Telecommunications Operator, with his 20-year service award.



Maintenance: (l. to r.) Travis Evans, Pavement Profiler Operator, received his 10-year service award from Tony Evans, Staff Maintenance Engineer.



Arkansas Highway Police: (l. to r.) Sgt. Tim Gushing receives his 5-year service award from Capt. Glen Holloway.



NEW EMPLOYEES

COMPUTER SERVICES
Joseph Pyle, Programmer II

CONSTRUCTION
Candon Bolinger, Construction Aide II, RE 94
John Lane, Construction Helper I, RE 94

HUMAN RESOURCES
Allen Burnett, General Laborer

MAINTENANCE
Kevin Meyer, Stripper Helper, Ouachita

SURVEYS
Eric Smith, Civil Engineer

DISTRICT 1
Eddie Austin, General Laborer, Crittenden
Roy Carter, Single Axle Truck Driver, Woodruff
Willie Harris, Single Axle Truck Driver, Crittenden
Linda Sims, Motorist Asst. Provider, Crittenden

DISTRICT 2
Waylon Jackson, General Laborer, Ashley
Shurun Jenkins, General Laborer, Ashley
Bobby King, General Laborer, Statewide
Patrick Williams, Sgl. Axle Tr. Driver, Statewide

DISTRICT 4
Charles Aaron, General Laborer, Statewide
Rickey Bates, General Laborer, Statewide
Alan Boggs, Single Axle Truck Driver, Statewide
Rodney Graham, General Laborer, Washington

DISTRICT 5
James McCoy, Sgl. Axle Tr. Dr., Independence

DISTRICT 6
George Penn, Single Axle Truck Driver, Prairie

DISTRICT 7
Roshar Ross, General Laborer, Dallas
Kenneth Starr, Single Axle Tr. Driver, Ouachita
Dwight Watson, General Laborer, Dallas

DISTRICT 8
Jimmy Deal, Single Axle Truck Driver, Pope
Judy Johnston, Single Axle Truck Driver, Pope

DISTRICT 10
Barry Hazelwood, Single Axle Tr. Dr., Craighead
Camilla Hill, General Laborer, Poinsett

PROMOTIONS

HEAVY BRIDGE
Glenn Cheatham, Heavy Bridge Maint. Engr.

MAINTENANCE
Mark Nichols, Engineer I

PERMITS
Lindsay McCarthy, Permit Technician

ROADWAY DESIGN
Liz Jones, Senior Designer
Lois Rachels, Senior Designer

DISTRICT 1
Tony Crafton, Adv. Const. Field Engineer, RE 13
Rueben Gilmer, Rest Area Attendant, St. Francis
Donnaire Granger, Const. Field Engr. II, RE 14
Billy Martin, Distributor/Roller Operator, Cross

DISTRICT 2
Robert Poston, Crew Leader, Arkansas
Brian Wells, Crew Leader, Drew

DISTRICT 3
Richard Colbert, Multi-Axle Truck Driver, Nevada
Grail Ratcliff, Personnel Clerk
Glen Semmler, Multi-Axle Truck Driver, Pike

DISTRICT 4
David Bowles, Jr., Maintenance Aide I, Franklin
Twandria Campbell, Personnel Clerk
Julie Moreton, Bridge Repairer II, Statewide
Bradley Powell, Hydr. Excav. Opr.-Fin., Statewide
Tina Shedd, Single Axle Tr. Driver, Washington
Teisha Vanzant, Maintenance Aide I, Sebastian

DISTRICT 5
Terence Carter, Bckh./Fr. End Load. Opr., Statewide
Sondra Grider, Resident Office Tech., RE 53

DISTRICT 6
Curtis Aud, Area Maint. Supervisor, Pulaski
Janet Bogle, Area Maint. Supervisor, Lonoke
Wade Holdcraft, Area Maint. Supv., Hot Spring
Aaron Hutcheson, Distrib./Roller Opr., Pulaski
Al Langhorn, Crew Leader, Prairie
Sarah Powell, Area Hq. Attendant, Prairie
Aaron Ring, Crew Leader, Pulaski
Stanley Rogers, Sealing Job Supt., Statewide
Kevin White, Resident Engineer, RE 61

DISTRICT 7
Jerry Graham, Construction Aide III, RE 74
William Pokorny, Adv. Const. Field Engr., RE 73

DISTRICT 8
Calvin Brannon, Maintenance Aide II, Faulkner
Gary Hicks, Bckh./Front End Loader Opr., Yell
Ronnie Molloy, Crew Leader, Statewide
Roger Wilson, Maintenance Aide II, Conway

DISTRICT 9
Melody Blair, Construction Helper II, RE 92
Clint Morris, Construction Helper II, RE 92
Brian Willis, Maintenance Aide II, Statewide

DISTRICT 10
Dennis Caldwell, Station Attendant II, Statewide
Deborah Harmon, Maintenance Aide I, Clay
Jerry Ladd, Area Headquarters Attendant, Clay
Regenia Landrum, Office Admin. Asst. V
James Manuel, Bckh./Fr. End Load. Opr., Mississippi
Jimmy Sturkey, Multi-Axle Truck Driver, Poinsett

RETIREMENTS

FISCAL SERVICES
Barbara Shell, Payroll Specialist, 17+ yrs.

MAINTENANCE
Ann Prosper, Maint. Mgmt. Analyst, 17+ yrs.

DISTRICT 2
Earnest Boykin, Crew Leader, 24+ yrs.

DISTRICT 8
Donnie Duvall, Senior Mechanic, 33+ yrs.

SERVICE AWARDS

ARKANSAS HIGHWAY POLICE
Kathy Davis, Patrol Officer 1CL, 5 yrs.
Randall Harrison, Corporal, 25 yrs.
Todd Wetzel, 1LT, 25 yrs.

CONSTRUCTION
Tim Dunlap, Resident Engineer, 20 yrs., RE 53
Chuck Holland, Estimates Supv., 25 yrs.
Cody Holland, Inspector, 10 yrs, RE 41
William Luke, Asst. Res. Engr., 15 yrs., RE 04
Amos O'Connor, Const. Aide, 5 yrs., RE 42
Jeffrey Qualls, Const. Aide II, 20 yrs., RE 52
Danny Reed, Sr. Const. Matl. Insp., 35 yrs., RE 14
Jason Williams, Adv. Const. Field Engr., 5 yrs., RE 43

ENVIRONMENTAL
Linda Pearson, Environmental Scientist II, 5 yrs.

EQUIPMENT & PROCUREMENT
Danny Keene, Division Head, 20 yrs.

HUMAN RESOURCES
Regina Durham, Skill Trades Trainee, 5 yrs.

MAINTENANCE
Margaret Besancon, Ofc. Admin. Asst III, 20 yrs.
Mark Headley, Section Head, Facilities, 15 yrs.

PLANNING & RESEARCH
Brenda Haley, Administrative Officer, 30 yrs.
David Lumbert, Transportation Specialist, 20 yrs.
David Sitton, Jr., Data Collection Tech., 20 yrs.
Minnie Beth White, Admin. Officer II, 25 yrs.

PROGRAMS & CONTRACTS
Larry Foreman, Reproduction Technician, 35 yrs.

RIGHT OF WAY
Toms Gray, Realty Appraiser/Negotiator, 15 yrs.
Gene Kuettel, Jr., Senior Utilities Coord., 15 yrs.
Tommy Lynn, Reviewing Appraiser, 15 yrs.
Trish Lynn, Right Of Way Negotiator, 15 yrs.

ROADWAY DESIGN
Mike Fugett, Staff Design Engineer, 20 yrs.

SURVEYS
Les Miller, Surveys Office Technician, 10 yrs.

DISTRICT 1
Joe Dewitt, Area Maint. Supervisor, 30 yrs.
Darrell Gaskin, Dist. Bridge Insp. Helper, 30 yrs.
Robert Kilpatrick, Single Axle Truck Driver, 5 yrs.

DISTRICT 2
Bobby Barnett, Distributor/Roller Operator, 5 yrs.
Clyde Robinson, Multi-Axle Truck Driver, 5 yrs.
Stanley Tripp, Distributor Operator, 10 yrs.

DISTRICT 3
Steven Morrow, Equipment Maint. Supv., 30 yrs.
Chomsley Ricks, Motor Patrol Operator, 5 yrs.

DISTRICT 4
Jessica Gramlich, Distributor/Roller Opr., 5 yrs.
Edward James, Motor Patrol Operator, 20 yrs.
Nicky Scrivner, Maintenance Aide II, 15 yrs.

DISTRICT 5
Steven Davis, Maintenance Aide II, 10 yrs.
Keith Foushee, Bridge Repairer, 10 yrs.
Mona Fry, Single Axle Truck Driver, 5 yrs.
Lee Garrett, Sign Erector, 10 yrs.
Larry Marshall, Bckh./Front End Loader Opr., 5 yrs.

DISTRICT 6
Edgar Burch, Bckh./Front End Loader Opr., 5 yrs.
Brian Singleton, Bridge Repairer, 10 yrs.
Eldon Young, Jr., Rest Area Attendant, 10 yrs.

DISTRICT 7
Jewell Williams, Senior Mechanic, 10 yrs.

DISTRICT 8
Lindel Carmack, Area Maint. Supervisor, 30 yrs.
Keith Chronister, Hydr. Excav. Opr.-Fin., 20 yrs.
Paul Cooper, Bckh./Front End Loader Opr., 10 yrs.
Rickey Harderson, Multi-Axle Truck Driver, 5 yrs.
Gloria Maxwell, Rest Area Attendant, 5 yrs.
Newt McMahan, Multi-Axle Truck Driver, 5 yrs.

DISTRICT 10
Jimmy Adams, Maintenance Aide II, 30 yrs.
Benny Denton, Sign Crew Supervisor, 25 yrs.
Kenneth Martin, Crew Leader, 30 yrs.
Gary Morton, Dist. Bridge Inspector Helper, 5 yrs.
Monte Smith, Multi-Axle Truck Driver, 10 yrs.

MEMORIALS

DISTRICT 4
Bobby Phillips, 08/04/06, retired

DISTRICT 6
Bobby Petty, 08/09/06, retired
Earl Summers, 07/22/06, retired
Lamnin "Buddy" Tripp, 08/01/06, retired

DISTRICT 7
Appleton Pickett, 07/14/06, retired

DISTRICT 8
Mary Silvey, 07/20/06, retired

MILITARY DUTY

As of 8/11/06, the AHTD had 14 employees serving active duty in the military. *Dates denote the deployment date.*

HUMAN RESOURCES
Travis Nelson, Safety Inspection Officer, 05/8/06

MAINTENANCE
Michael Brown, Sr. Traffic Investigator, 06/12/06

DISTRICT 1
Ricky Benson, Construction Helper II, 07/19/06
R.M. Ferrell, Bckh./Fel Operator, 01/02/06
Roger Specking, Bridge Job Supt., 07/8/06

DISTRICT 4
Jeremy Bowles, Construction Helper II, 07/13/06
Reed Nathan, Multi/Axle Truck Driver, 10/03/05

DISTRICT 6
Shirley Hammett, Area Hq. Attendant, 07/20/04

DISTRICT 9
Steven Halsted, Hydr. Excav. Opr./Fin., 07/03/06

DISTRICT 10
Kyle Beasley, Single Axle Truck Driver, 07/19/06
Robert Martin, General Laborer, 07/19/06
Dustin Miller, Bridge Repairer, 07/19/06
Gary Morton, Bridge Inspector Helper, 07/19/06
Donnie Pfeifer, Single Axle Truck Driver, 07/19/06



Highway 62B Bridge at Coffey in Baxter County.
Answer to "Where is This?"