

Searcy

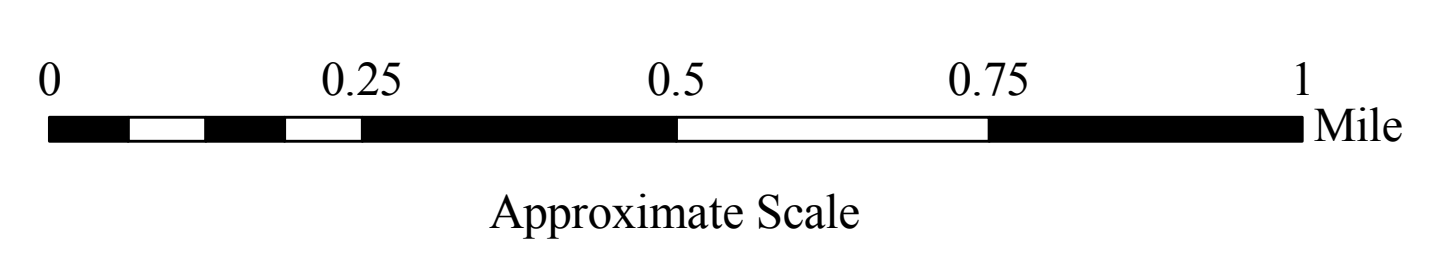
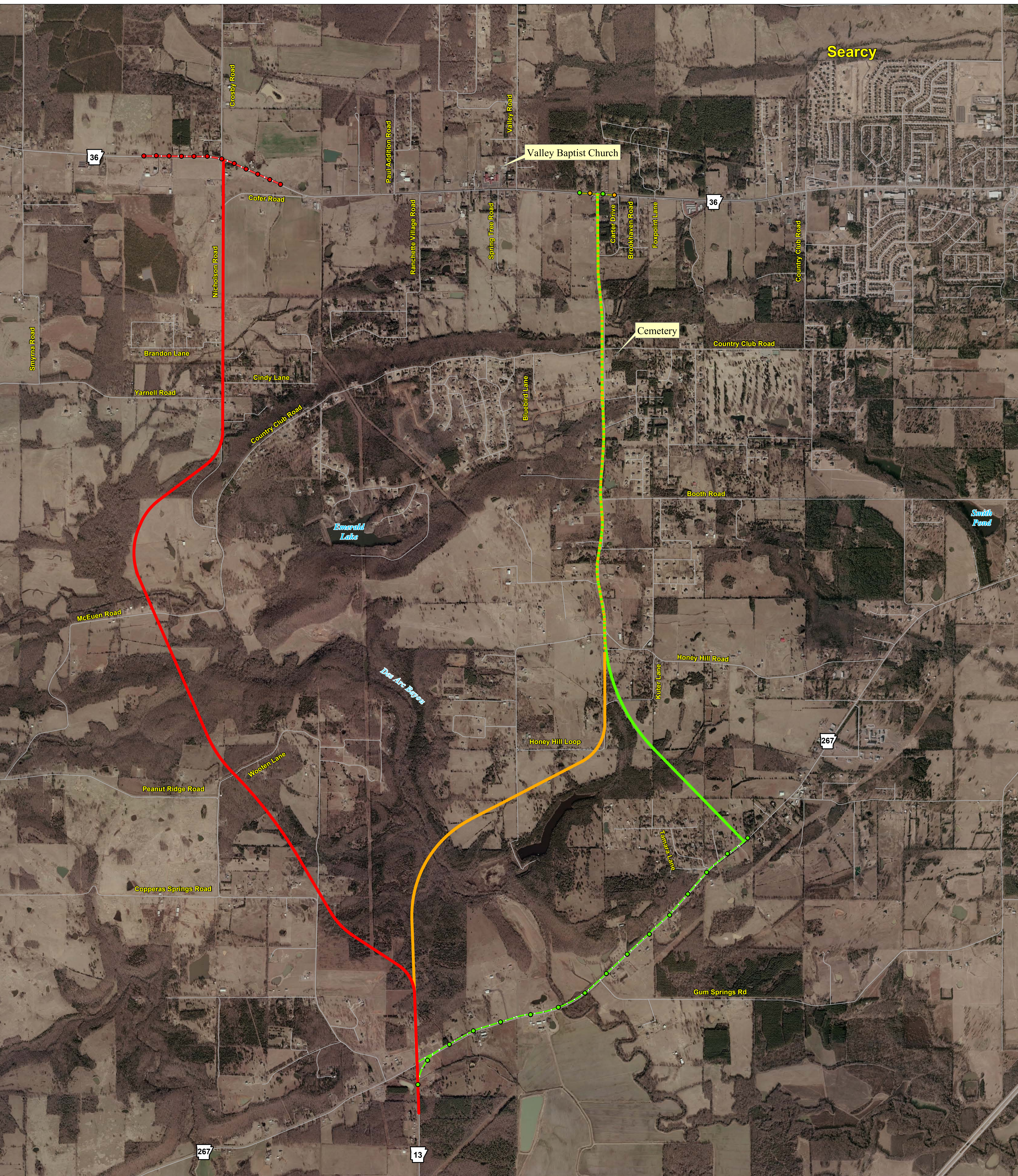
Valley Baptist Church

Cemetery

Smith Pond

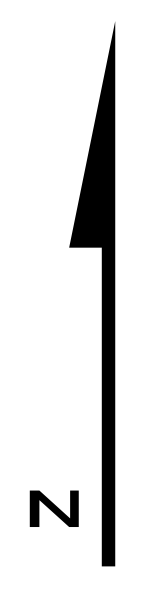
Emerald Lake

Das Arc Bayou



Location Public Hearing Display - June 30, 2009  
 Map Date - June 24, 2009

Photography Date - January 3, 2006



Job 050185  
 Highway 267 - Highway 36  
 (Highway 13 Extension)  
 (Searcy)  
 White County

- Alternative 1
- Alternative 2
- Alternative 3
- Improvement to Existing
- Improvement to Existing
- Improvement to Existing