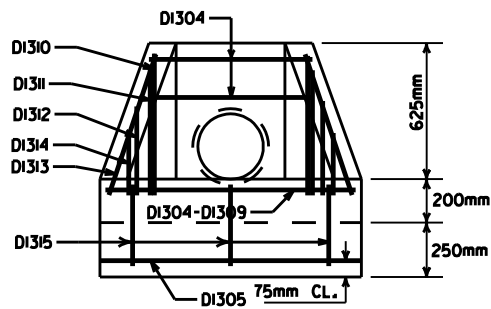
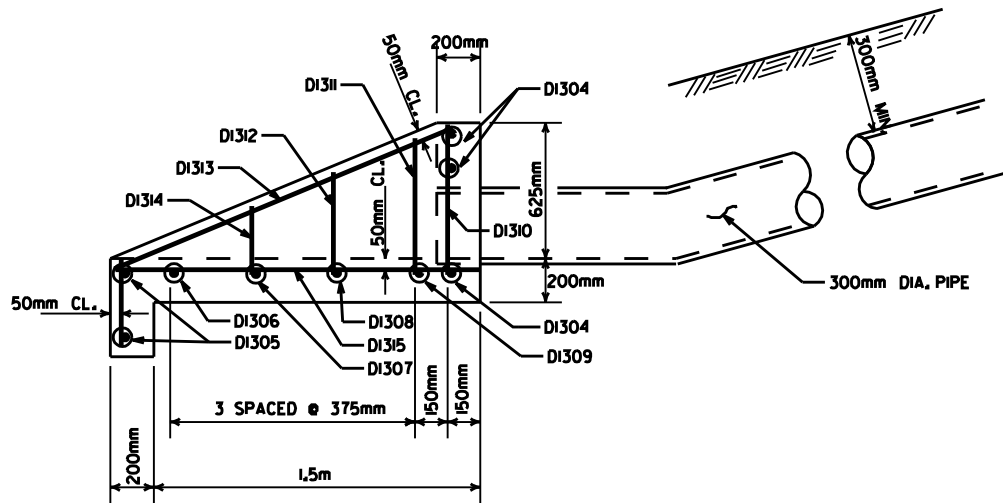


PLAN



FRONT ELEVATION



SIDE ELEVATION  
CONCRETE SPILLWAY

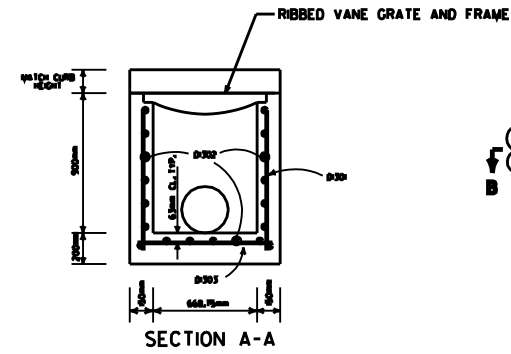
BAR LIST  
(CONCRETE SPILLWAY)

MARK	NO. REQ'D.	LENGTH mm	BENDING DIAGRAM
D1304	3	650	
D1305	2	1100	
D1306	1	1025	
D1307	1	925	
D1308	1	825	
D1309	1	725	
D1310	2	725	
D1311	2	650	
D1312	2	525	
D1313	2	1650	
D1314	2	350	
D1315	3	1925	

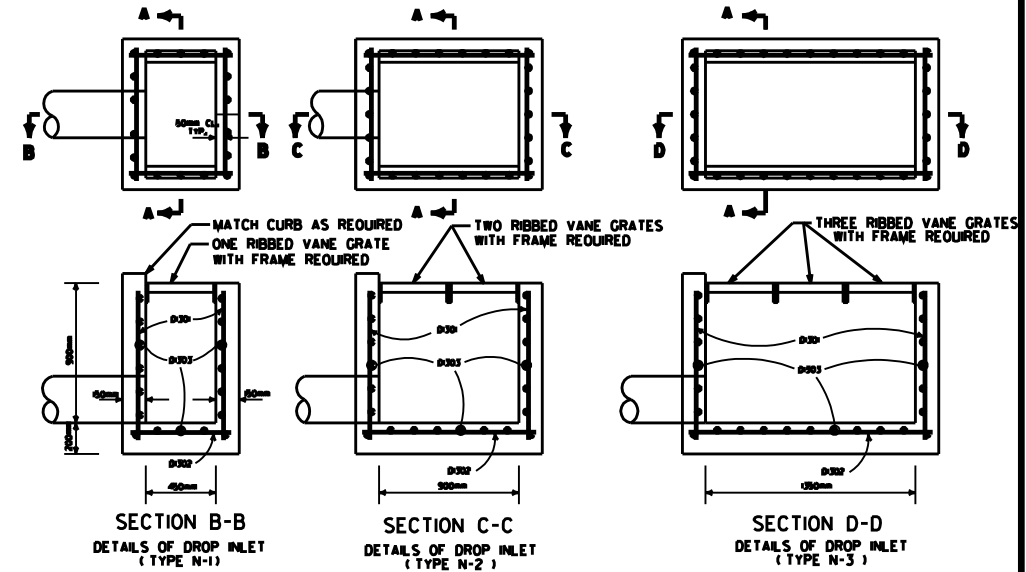
BAR LIST (DROP INLET)

MARK	TYPE N-1		TYPE N-2		TYPE N-3	
	NO. REQ'D.	LENGTH mm	NO. REQ'D.	LENGTH mm	NO. REQ'D.	LENGTH mm
D1301	20	900	26	900	32	900
D1302	19	650	19	1100	19	1550
D1303	17	875	20	875	23	875

ALL BARS #13 @ 150mm SPACING



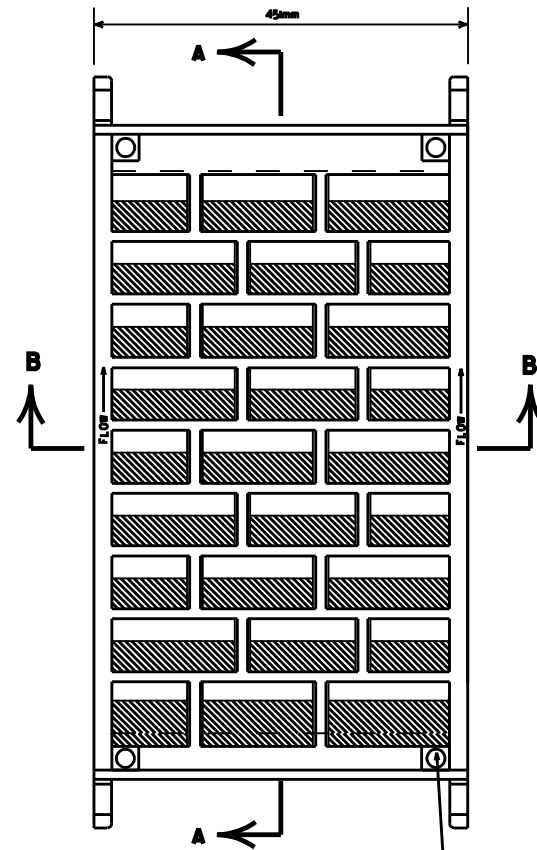
SECTION A-A



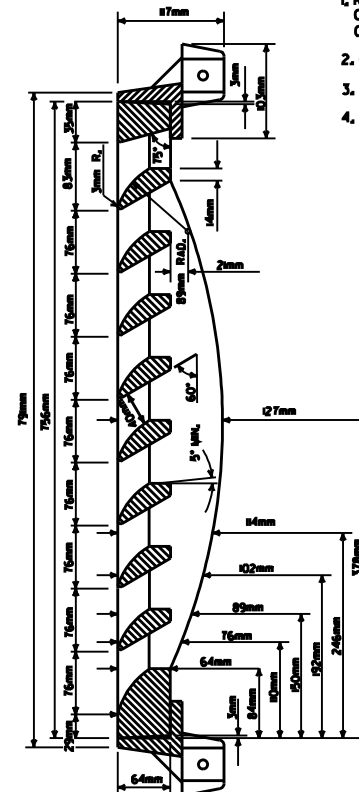
DETAILS OF DROP INLET

GENERAL NOTES (GRATE & FRAME)

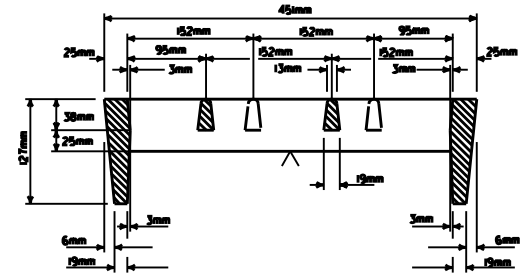
1. RIBBED VANE GRATE AND FRAME SHALL BE CONSTRUCTED OF CAST IRON AND SHALL CONFORM TO THE REQUIREMENTS OF THE STANDARD SPECIFICATIONS FOR GRAY IRON CASTINGS AASHTO M 105 CLASS 35B & AASHTO M 306.
2. GRATE AND FRAME SHALL NOT BE PAINTED.
3. GRATE AND FRAME SHALL BE INSTALLED IN DROP INLET IN ASSEMBLED POSITION.
4. APPROXIMATE WEIGHT OF GRATE SHALL BE 77kg.



DETAILS OF RIBBED VANE GRATE AND FRAME



SECTION A-A



SECTION B-B

SECTION THRU FRAME

ARKANSAS STATE HIGHWAY COMMISSION

DETAILS OF DROP INLETS AND  
SPILLWAY OUTLET

STANDARD DRAWING FPC-9N(M) METRIC

DETAILS OF CONCRETE SPILLWAY (TYPE A)

7-02-98	REVISED SECT. A-A DETAIL OF D.I.
4-03-97	ADDED AASHTO REF. TO NOTE 4, REVISED GRATE
10-0-95	REVISED STEEL BARS TO SOFT METRIC
7-20-95	REVISED AASHTO REF. TO AASHTO
REVISED	CONVERTED TO METRIC