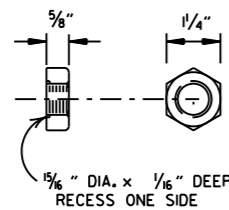
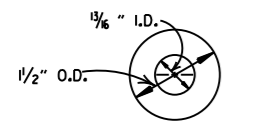


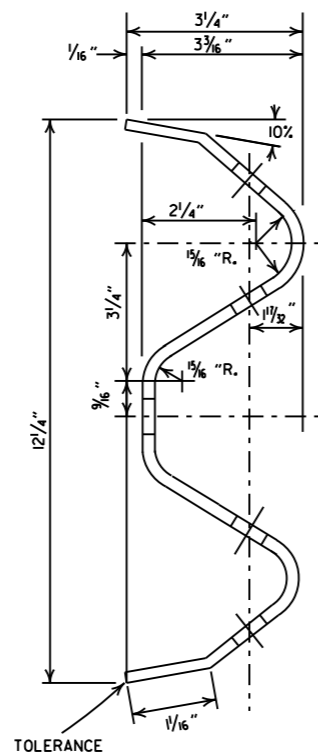
SPLICE BOLT
NOTE: POST BOLT SAME EXCEPT LENGTH.



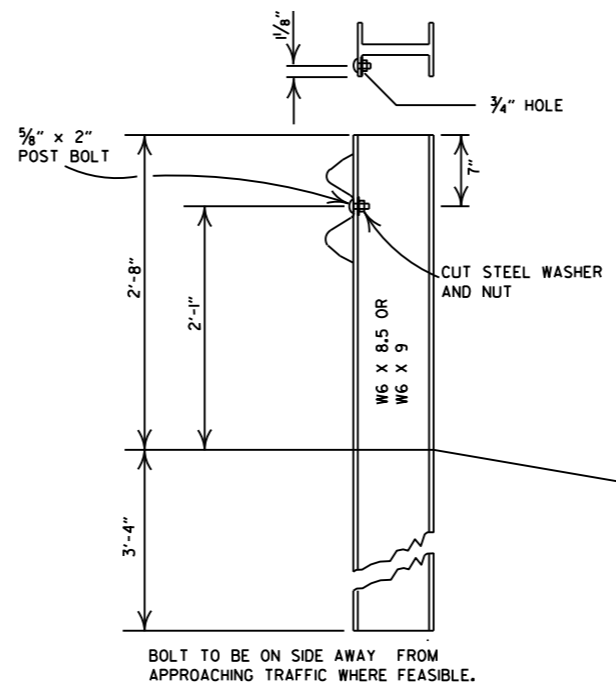
NUT



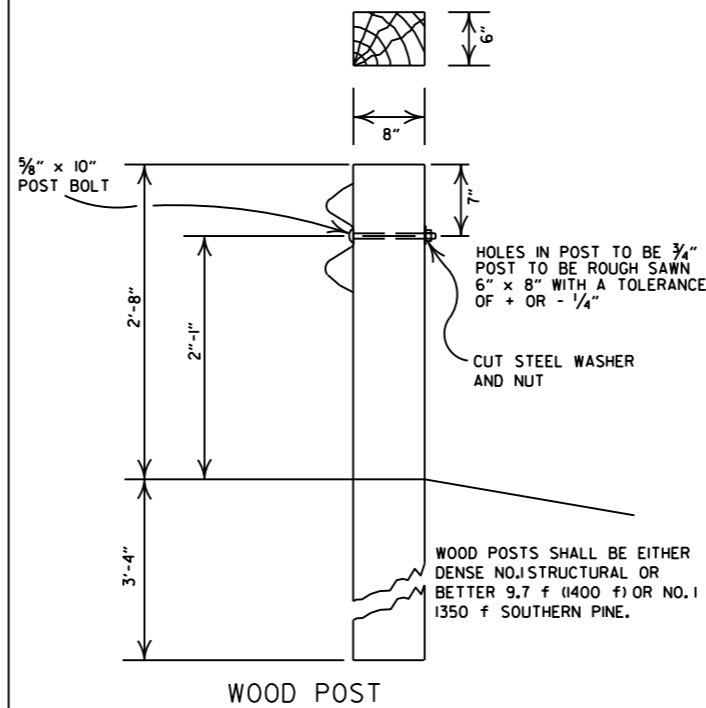
CUT STEEL WASHER



SECTION THRU RAIL



STEEL POST



WOOD POST

DETAILS OF POST CONNECTIONS

DATE	REVISION	FILMED
11-07-19	RENUMBERED AND RENAMED	
11-16-17	REVISED GUARDRAIL HEIGHT	
07-14-10	RAISED HEIGHT OF GUARDRAIL 1"	
08-22-02	REVISED DIMENSION ON STEEL POST	
11-16-01	REVISED STEEL AND WOOD POST	
08-12-98	REMOVED CONCRETE POST	
10-18-96	CHANGED WOOD POST NOTE	10-18-96
06-02-94	ADDED ALTERNATE STEEL POST SIZE	
08-05-93	REVISED STEEL POSTS SIZE	8-5-93
08-15-91	DELETE STEEL PLATE WASHER & ADDED TYPE C TO TITLE	8-15-91
10-30-87	REMOVED DET. PLCMNT. ON HWY.	555-11-20-87
01-04-83	GRADE FOR WOOD POSTS	679-1-4-83
10-01-77	HARDENED WASHER	922-10-1-72
10-02-72	REVISED & REDRAWN	521-10-2-72

ARKANSAS STATE HIGHWAY COMMISSION

GUARDRAIL DETAILS (TYPE C)
STREET / ROAD BARRICADE OR
TEMPORARY INSTALLATION

STANDARD DRAWING GR-5