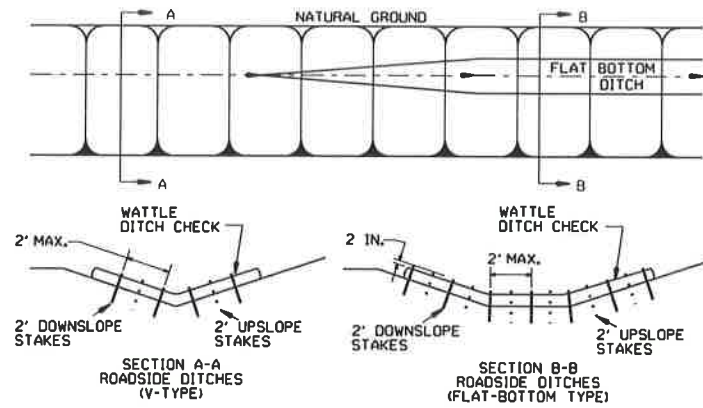


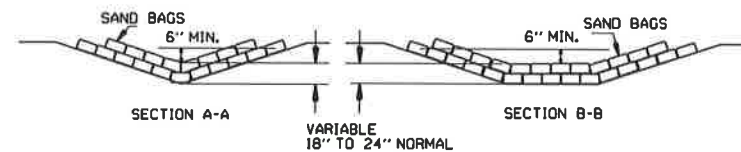
GENERAL NOTES

INSTALL A MINIMUM OF 2 UPSLOPE STAKES AND 4 DOWNSLOPE STAKES AT AN ANGLE TO WEDGE WATTLE TO BOTTOM OF DITCH.

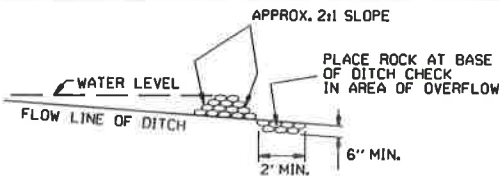


WATTLE DITCH CHECK (E-1)

NUMBER OF SAND BAGS AND ARRANGEMENT VARIABLE WITH ON-SITE CONDITIONS. PLACE SAND BAGS AT BASE OF DITCH CHECK IN AREA OF OVERFLOW.

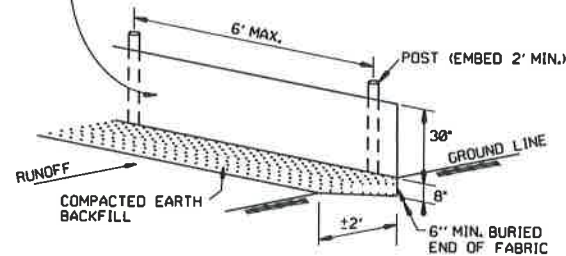


SAND BAG DITCH CHECK (E-5)

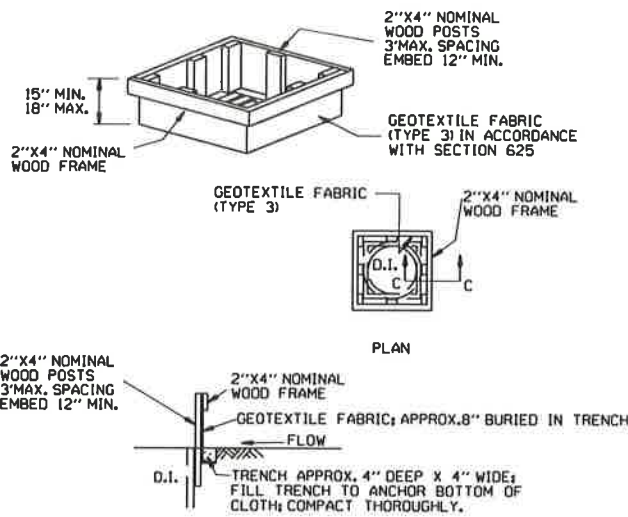


ROCK DITCH CHECK (E-6)

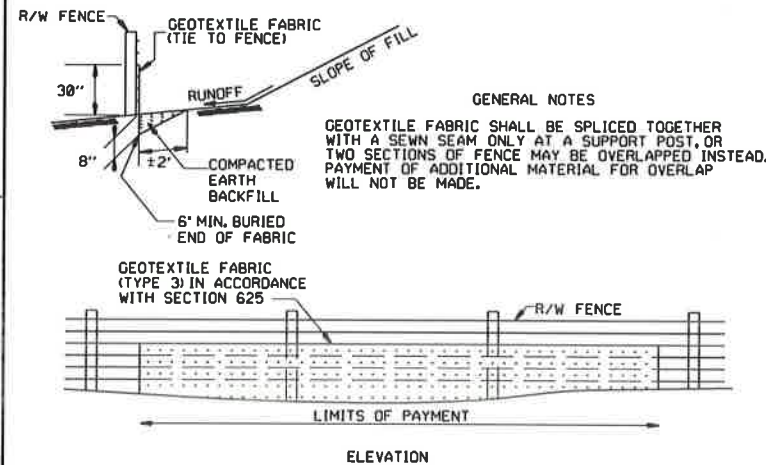
GENERAL NOTES
 GEOTEXTILE FABRIC (TYPE 4) IN ACCORDANCE WITH SECTION 625
 GEOTEXTILE FABRIC SHALL BE SPICED TOGETHER WITH A SEWN SEAM ONLY AT A SUPPORT POST OR TWO SECTIONS OF FENCE MAY BE OVERLAPPED INSTEAD. PAYMENT OF ADDITIONAL MATERIAL FOR OVERLAP WILL NOT BE MADE.



SILTS FENCE (E-11)

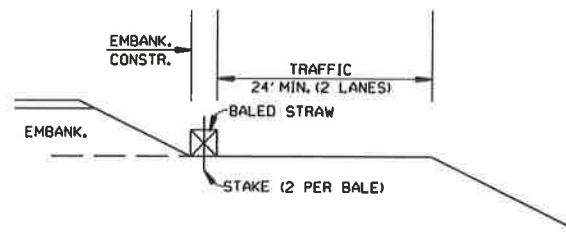


DROP INLET SILTS FENCE (E-7)

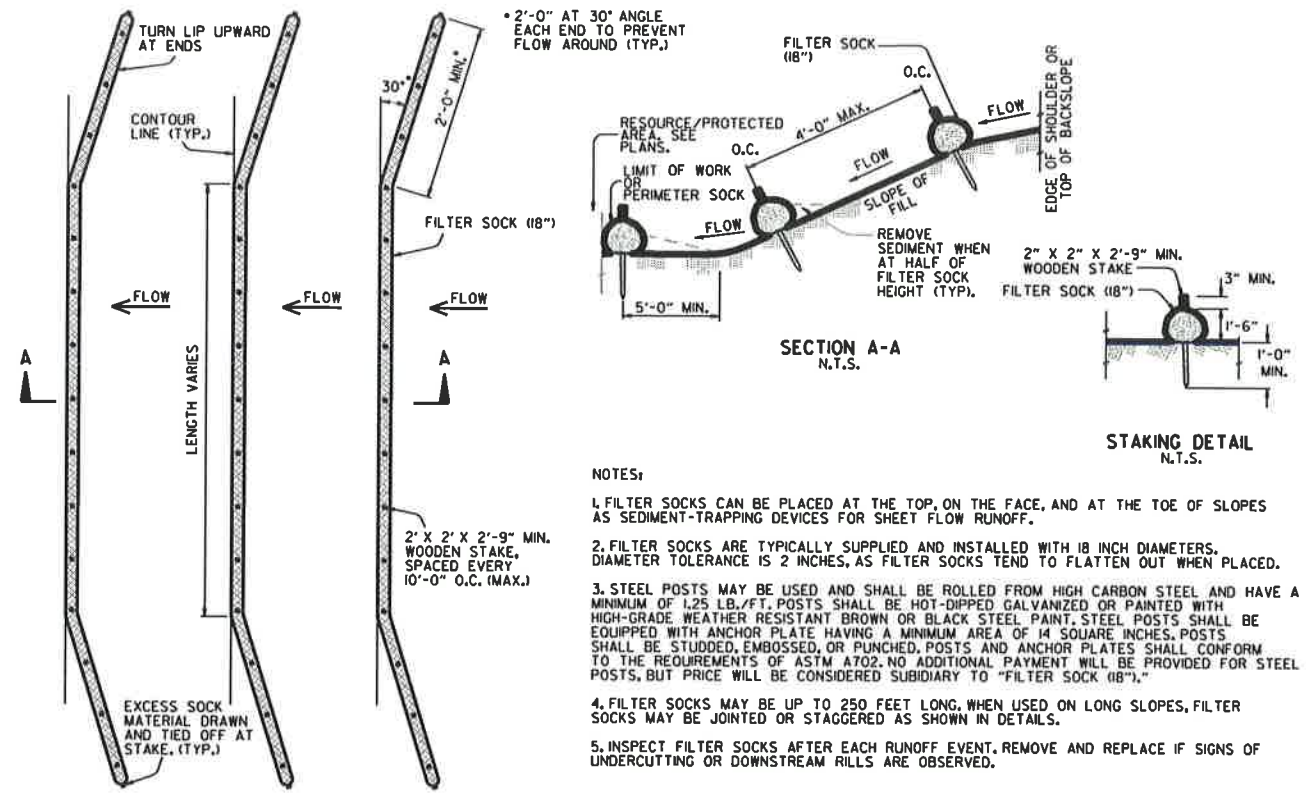


SILTS FENCE ON R/W FENCE (E-4)

GENERAL NOTES
 1. STRAW BALES SHALL BE INSTALLED SO THAT THE BINDINGS ARE ORIENTED AROUND THE SIDES RATHER THAN ALONG THE TOPS AND BOTTOMS OF THE BALES. THE BALES SHALL BE A MINIMUM OF 30 INCHES IN LENGTH.
 2. NO GAPS SHALL BE LEFT BETWEEN BALES.
 3. BALED STRAW FILTER BARRIERS COMPLETED AND ACCEPTED WILL BE MEASURED BY THE BALE IN PLACE AS AUTHORIZED BY THE ENGINEER AND WILL BE PAID FOR AT THE CONTRACT UNIT PRICE BID PER BALE FOR BALED STRAW DITCH CHECKS.

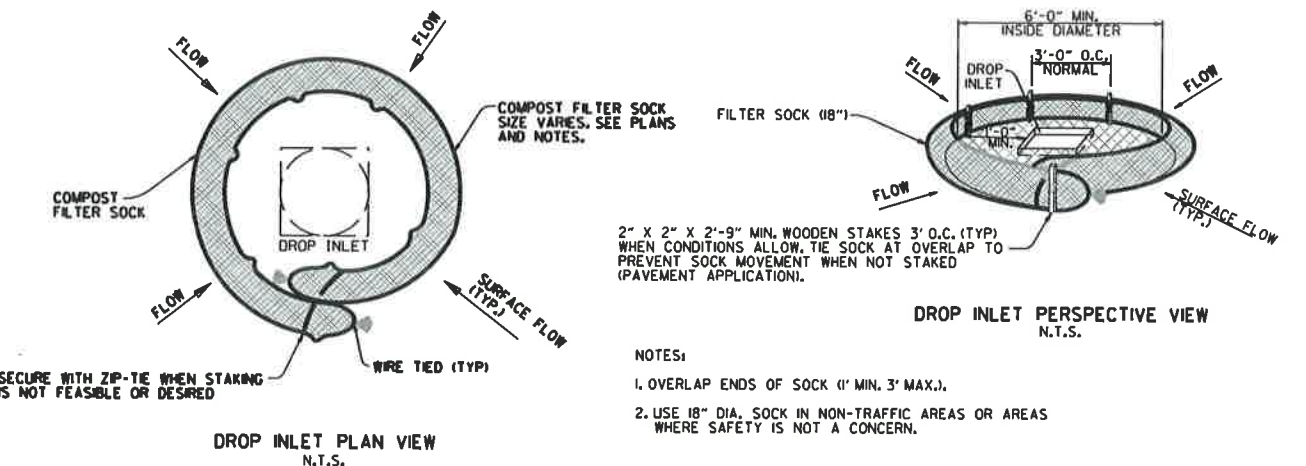


BALED STRAW FILTER BARRIER (E-2)



FILTER SOCK ALONG SLOPE (E-3)

NOTES:
 1. FILTER SOCKS CAN BE PLACED AT THE TOP, ON THE FACE, AND AT THE TOE OF SLOPES AS SEDIMENT-TRAPPING DEVICES FOR SHEET FLOW RUNOFF.
 2. FILTER SOCKS ARE TYPICALLY SUPPLIED AND INSTALLED WITH 18 INCH DIAMETERS. DIAMETER TOLERANCE IS 2 INCHES, AS FILTER SOCKS TEND TO FLATTEN OUT WHEN PLACED.
 3. STEEL POSTS MAY BE USED AND SHALL BE ROLLED FROM HIGH CARBON STEEL AND HAVE A MINIMUM OF 1.25 LB./FT. POSTS SHALL BE HOT-DIPPED GALVANIZED OR PAINTED WITH HIGH-GRADE WEATHER RESISTANT BROWN OR BLACK STEEL PAINT. STEEL POSTS SHALL BE EQUIPPED WITH ANCHOR PLATE HAVING A MINIMUM AREA OF 14 SQUARE INCHES. POSTS SHALL BE STUDDED, EMBOSSED, OR PUNCHED. POSTS AND ANCHOR PLATES SHALL CONFORM TO THE REQUIREMENTS OF ASTM A702. NO ADDITIONAL PAYMENT WILL BE PROVIDED FOR STEEL POSTS, BUT PRICE WILL BE CONSIDERED SUBSIDIARY TO "FILTER SOCK (18\"/>



COMPOST FILTER SOCK DROP INLET PROTECTION (E-13)

NOTES:
 1. OVERLAP ENDS OF SOCK (1' MIN. 3' MAX.).
 2. USE 18" DIA. SOCK IN NON-TRAFFIC AREAS OR AREAS WHERE SAFETY IS NOT A CONCERN.

11-16-17	ADDED FILTER SOCK E-3 AND E-13	
12-15-11	DELETED BALED STRAW DITCH CHECK & ADDED WATTLE DITCH CHECK	
1-18-98	ADDED NOTES	
07-02-98	ADDED BALED STRAW FILTER BARRIER (E-2)	7-20-95
07-20-95	REVISED SILTS FENCE E-4 AND E-11	
07-15-94	REV. E-4 & E-11 MIN. 13" BURIED END OF FABRIC	6-2-94
06-02-94	REVISED E-1, 4, 7 & 11 DELETED E-2 & 3	
04-01-93	REDRAWN	
10-01-92	REDRAWN	
08-02-76	ISSUED R.D.M.	298-7-28-76
DATE	REVISION	FILMED

ARKANSAS STATE HIGHWAY COMMISSION
 TEMPORARY EROSION CONTROL DEVICES
 STANDARD DRAWING TEC-1